

Sacred Heart University

GO SHU Pioneers



Sacred Heart University



*Pioneers Basketball
Game Program
1982 - 1983*

Choose your career

Sacred Heart University offers you 25 concentrations and 41 suggestions for your future. *(And there are many more.)*

CAREER CHOICES	ALTERNATIVE MAJORS																								
	Accounting	Art	Biology	Business Administration	Chemistry	Criminal Justice	Computer Science	Data Processing	Economics	Education	English	Finance	History	Management/Marketing	Mathematics	Media Studies	Modern Languages	Operations Research	Philosophy	Political Science	Psychology	Religious Studies	Secretarial Studies	Social Work	Sociology
Accountant	•			•										•											
Advertising		•		•						•				•		•				•					
Auditor	•			•										•											
Biochemist			•		•																				
Broadcasting										•						•									
Business Programmer	•			•			•							•	•										
Clinical Psychologist			•																	•					
Computer Operator							•	•							•			•							
Controller	•										•														
Criminologist					•																			•	
Demographer															•								•		•
Dentist			•		•																				
Economist	•			•				•						•											
Executive Secretary				•																			•		
Foreign Service Officer											•						•		•						
Forensic Chemist			•		•																				
Guidance Counselor									•											•					
Illustrator		•	•																						
Industrial Psychologist				•																•					
Interpreter																•									
Lawyer	•			•		•					•	•	•						•	•		•			•
Legal Assistant				•											•										
Market Research Analyst	•						•	•	•					•	•			•		•					
Medical Technician			•		•																				
Ministry																			•		•				
Operations Research Analyst				•				•							•			•							
Personnel				•										•											
Public Relations		•		•						•				•		•					•				
Physician			•		•																				
Psychiatrist			•		•																				
Psychologist									•																
Probation Officer						•																	•		
Radiologist			•		•																				
Rehabilitation Counselor			•																		•			•	•
Research and Development			•		•																				
Sales				•										•											
Securities Analyst	•			•																•					
Social Worker									•			•								•					
Stockbroker	•							•						•	•										
Teacher		•	•	•	•					•			•	•	•				•	•	•	•	•	•	•
Writer/Journalist				•						•			•	•	•				•	•	•		•	•	•

Questions? Call:

Dean Sharon Brennan Browne,
 Full-Time - 203/371-7880
 Department of Continuing Education,
 Part-Time - 203/371-7830

**Sacred
 Heart
 University**

Only 60 seconds from exit 47
 on the Merritt Parkway in
 Fairfield, CT.

Sacred Heart University accepts
 students of any race, color, creed,
 sex, handicap, nationality or ethnic origin.

Major credit cards accepted.
 MasterCard • VISA

Sacred Heart University

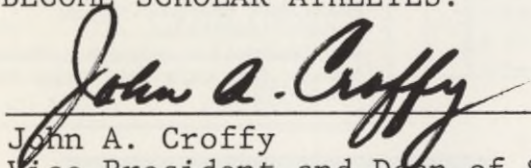
Fairfield, Connecticut

Mailing Address
Post Office Box 6460
Bridgeport, Connecticut 06606
(203) 374-9441

Office of the Vice President and Dean of Students

GREETINGS:

WE OF THE SACRED HEART UNIVERSITY COMMUNITY WELCOME THE FANS, THE VISITING TEAM AND ITS STAFF. YOUR PRESENCE MAKES THIS CONTEST POSSIBLE AND YOUR CHEERS OF ENCOURAGEMENT CREATE THE FINAL OUTCOME. ALL PARTICIPANTS WILL EMERGE VICTORIOUS IN THEIR QUEST TO BECOME SCHOLAR ATHLETES.


John A. Croffy
Vice President and Dean of Students



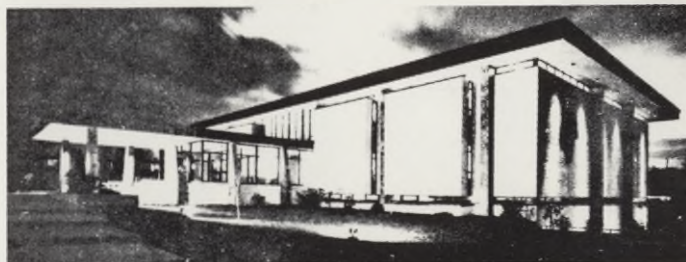
SACRED HEART UNIVERSITY

Sacred Heart University was founded in 1963 by the Most Reverend Walter W. Curtis, Bishop of Bridgeport. He visualized an institution of higher learning, rooted in the Catholic intellectual heritage and reflecting the ecumenical thrust of post-Vatican II. The University opened its doors to people of every race, creed, handicap, national or ethnic origin located in the southwestern area of Connecticut, which it was designed to serve. The university has been unique since its inception in that it has always been staffed and administered primarily by lay people who reflect in their diversity the ecumenical vision of its founder.

The University's mission is that of a teaching university designed for commuter students. There are no dormitories. Everyone commutes. This configuration represents the original and most basic concepts of higher education as established in the original and revered European universities. The replication of this long-established tradition is further emphasized by the University's commitment to the intellectual development of its students within a well-defined Liberal Arts program. At the same time, the students are prepared to take their places in the world of useful endeavor by the acquisition of specialized information and skills appropriate to personal goals and the demands of a chosen profession.

The academic objectives of the University are primarily pursued through associate and baccalaureate degree programs, with the on-campus availability of several master's degree programs for even further specialized learning. These levels of advanced education have been established to fulfill the expressed needs of the people of Southwestern Connecticut. And to further fulfill these needs, this community of scholars is dedicated to the holistic notion that the formation of a level of self knowledge, with individual autonomy and a deep sense of conscious purpose within society is necessary for the actualization of the potential that exists within us all.

Located in suburban Fairfield and easily accessible from all of Connecticut, Sacred Heart is the area's first nonresidential university. Everyone commutes — a tremendous saving in educational costs for a total enrollment of over 4800 men and women. And at least 63% of the student body receives financial aid.



SACRED HEART UNIVERSITY

Location Fairfield, CT
 Population of City 40,000
 College Founded 1963
 Enrollment 1850
 Nickname Pioneers
 Colors Crimson & White
 Conference NECC
 Affiliation NCAA Division II
 Home Court SHU Gym (1,200)
 President Dr. Thomas Melady
 Athletic Director Dave Bike
 Men's Basketball Coach Dave Bike
 Alma Mater Sacred Heart '69
 Record at SHU 81-35 (4 years)
 Career Record 81-35 (4 years)
 Assistants Bob Jenkins ('78)
 Rudy Charles ('82)
 81-82 Conference Record (8-1)
 81-82 Record 26-6, New England
 and NECC (8-1) playoff Champions
 NCAA Tournaments 1971, 1972, 1975
 1977, 1978, 1981, 1982
 NCAA Tournament Record 9-9
 Regional Champs 1977, 1978, 1982
 Women's
 Basketball Coach Pedro Tagatac
 Alma Mater Fairfield U. '59
 Record at SHU 4-14 (1 year)
 Sports Information Sandy Sulzycki
 Assistant AD, Trainer Pete DiOrio

SACRED HEART UNIVERSITY ROSTER

No.	Roster	Field Goals	Free Throws	Fouls	Total
4	RICK CLARK 5-8 160 Sr. New Britain, Ct.	22222 22222 22222 22222	11111 11111 11111	12345	
10	STEVE ZAZURI 6-1 165 Jr. Fairfield, Ct.	22222 22222 22222 22222	11111 11111 11111	12345	
12	CAM FARRAR 6-2 185 Sr. Milford, Ct.	22222 22222 22222 22222	11111 11111 11111	12345	
14	BOB KELLY 6-2 186 Jr. Bridgeport, Ct.	22222 22222 22222 22222	11111 11111 11111	12345	
20	ADOLPH ELLIS 6-0 190 Sr. Elmhurst, NY	22222 22222 22222 22222	11111 11111 11111	12345	
22	MIKE ROBINSON 6-3 190 Fr. Waterbury, Ct.	22222 22222 22222 22222	11111 11111 11111	12345	
24	ROGER YOUNGER 6-2 165 Fr. Middletown, Ct.	22222 22222 22222 22222	11111 11111 11111	12345	
32	KEITH BENNETT 6-5 185 Sr. Stamford, Ct.	22222 22222 22222 22222	11111 11111 11111	12345	
34	RHONIE WRIGHT 6-6 200 Sr. Newark, NJ	22222 22222 22222 22222	11111 11111 11111	12345	
40	JOE JACKSON 6-3 170 Fr. Bridgeport, Ct.	22222 22222 22222 22222	11111 11111 11111	12345	
42	KEITH JOHNSON 6-3 200 Fr. West Haven, Ct.	22222 22222 22222 22222	11111 11111 11111	12345	
44	RAY BROWN 6-8 210 Fr. Norwalk, Ct.	22222 22222 22222 22222	11111 11111 11111	12345	
50	HERB CAMERO 6-8 190 Sr. Willemsted, Ant.	22222 22222 22222 22222	11111 11111 11111	12345	
52	SCOTT McCORMACK 6-3 180 Fr. Bethel, Ct.	22222 22222 22222 22222	11111 11111 11111	12345	

1982-83 SACRED HEART BASKETBALL MEMBERS - Front row, left to right, Manager Greg Romanovsky, Assistant Coach Bob Jenkins, Rick Clark, Scott McCormack, Bob Kelly, Roger Younger, Assistant Coach Rudy Charles and Head Coach Dave Bike. Second row, Keith Bennett and Rhonie Wright. Third row, Cam Farrar, Steve Zazuri and Joe Jackson. Fourth row, Ray Brown, Chris Dalecki, Herb Camero and Keith Johnson. Fifth row, Adolph Ellis and Mike Robinson.



**MECHANICS & FARMERS
Savings Bank**

WIN

067447

5 Budweiser T-Shirts
1 Rawling T-Shirt
Converse Assorted Prizes
Clairol Shampoo



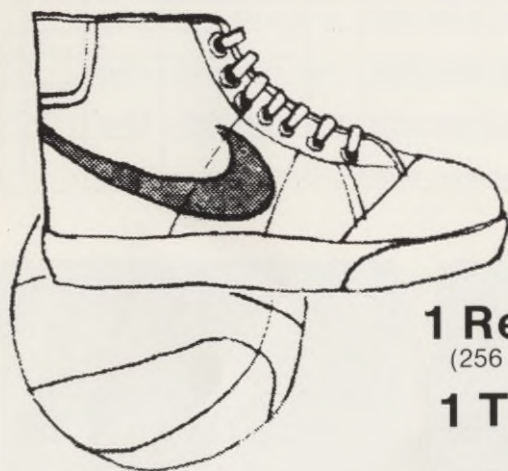
2 Trans Lux Theater Tickets
(at Trumbull Shopping Mall)

2 Bridgeport Jai-Alai Tickets

2 SHU Basketball Tickets

Stratford Racquetball Club

Racquetball or Health Club Pass
140 Watson Blvd.



1 Red Rooster Grinder

(256 Oak St. at corner of North Ave.)

1 Three Corner Pizza

(1023 Brooklawn Ave.)

1 York Steak House Dinner

(at Trumbull Shopping Mall)

1 SHU Cafeteria Lunch



JUST BUY A LUCKY NUMBER GAME PROGRAM

**DRAWINGS AT HALFTIME OF EVERY HOME SHU
BASKETBALL GAME**

SHU BASKETBALL THANKS THESE DONORS FOR THEIR SUPPORT

FRIENDS OF SHU BASKETBALL

Al & Mary Bike
Loraine Boudreau
Sharon & Tom Brown
Mr. & Mrs. Alvin Clinkscales
Virginia & John Croffy
Mr. & Mrs. Edward Dorne
Mr. John R. Hansen
Cliff Harrison
Mr. & Mrs. Frank Hutvagner
Probate Judge & Mrs. John Shannon
Mr. & Mrs. Robert P. Shea
Dr. & Mrs. James Sheehy
Sigma Psi Omega Fraternity
Joe & Carol Wynne

FORMER SHU BASKETBALL PLAYERS

Rudy Charles
Bill Chase
Bob Jenkins
Henry Moraes
Greg Pritchett
Ray Zukowski

The Full Court Press

SHU News Established in 1963

20 Proud Years

EXTRA! EXTRA! ALUMNI TEAM IS READY TO WIN



HELP WANTED

We need you to help us carry the ball with alumni activities:

- Annual Fund
- Reunion Events
- Encore Seminars
- Special Activities
- Alumni Homecoming Basketball Game
Saturday — January 22, 1982
- Phonathon
- Alumni Picnic
- Alumni Council

Interested applicants should contact SHU Alumni Office for job descriptions at 371-7861 or by writing to Alumni Office, Sacred Heart University, P.O. Box 6460, Bridgeport, CT 06606.

WHAT'S MISSING IN THIS PICTURE? YOU!!

Join the Alumni Team Today



ALUMNI CHEER

Get off the Bench
Get into the game
Join the Alumni Team
Where Everyone is an MVP