



A grip on a third straight NCAA Tournament?

# Sacred Heart University 1992 Softball Program



## This Is Sacred Heart University

**The University:** Sacred Heart University is a private, coeducational liberal arts institution founded in 1963 by the Most Rev. Walter W. Curtis, Bishop of the Diocese of Bridgeport. Embodying a new direction within American Catholicism, the University is led and staffed by the laity, independent, and locally oriented.

**Location:** The University is located in Fairfield, a suburban community of 55,000 in Southwestern Connecticut, approximately 1½ hours northeast of New York City, three hours southwest of Boston and one hour southwest of Hartford. More than half of the picturesque 53-acre campus is bordered by a 36-hole golf course. Nearby are the world headquarters for General Electric, *Golf Digest/Tennis Magazine* and The Discovery Museum.

**Enrollment:** 3,500 full- and part-time undergraduates and 1,100 graduate students.

**Student/Faculty:** 14:1. Seventy-three percent of the faculty holds doctorates.

**Degrees Conferred:** The University offers baccalaureate candidates a choice of 23 majors in the areas of liberal arts, business and professional studies. Candidates seeking an associate degree can choose from among 26 major concentrations. Master degree programs are offered in the fields of business administration (MBA), (MBA/Health Care), religious studies (MARS), teaching (MAT) and nursing (MSN). Professional Certificates (6th year) in Administration and Advanced Teaching are also offered.

**Student Activities:** Academic clubs, service clubs, student government, newspaper, yearbook, radio station, social clubs, fraternities and sororities are just some of the activities available to students.

**Athletics:** The University's intercollegiate athletic program now embraces 18 sports, with more to be added in the near future. For men: basketball, football (Division III), baseball, soccer, lacrosse, volleyball, cross country, golf and bowling. For women: basketball, softball, soccer, volleyball, cross country, golf, bowling, lacrosse and field hockey. An extensive intramural program is available for men and women.

**Financial Aid:** Moderate fees coupled with numerous aid packages make a Sacred Heart University education affordable to virtually everyone. Approximately 92 percent of enrolled students receive financial assistance from federal, state, University and private sources. For information: 1-800-333-8934 or (203) 371-7880.

**Accreditation:** Accredited by the New England Association of Schools and Colleges.



# Sacred Heart University 1992 Softball Program

## Quick Facts

**Location:** 5151 Park Avenue, Fairfield, CT 06432

**Founded:** 1963

**Enrollment:** 3,500 full- and part-time undergraduates

**President:** Dr. Anthony J. Cernera

**Nickname:** Lady Pioneers

**Colors:** Scarlet and White

**Home Field:** Jewish Community Center Field, Bridgeport

**Athletic Affiliations:**

National Collegiate Athletic Association (NCAA)

Eastern College Athletic Conference (ECAC)

**Conference:** New England Collegiate Conference (NECC)

## DEPARTMENT OF ATHLETICS

**Director of Athletics:** Dave Bike '69

Office: 203/371-7827

Fax: 203/365-7696

**Associate Director of Athletics:**

Gary Reho (Springfield '76)

**Assistant Director of Athletics:**

Elizabeth Luckie '85

**Coordinator of Athletic Programs:**

Nick Giaquinto (Connecticut '80)

**Coordinator of Recruiting:**

Steve Fordyce (Middlebury '89)

## SOFTBALL STAFF

**Head Coach:** Elizabeth Luckie '85

1991 Record: 27-8/12-2 NECC (1st)

**Assistant Coaches:** Pam London '86,

Lynn Rocheleau (Eastern Connecticut '89)

**Director of Sports Medicine:**

Mike Weild (Wright State '86)

**Trainer:** Helene Dakin (North Adams '90)

## SPORTS INFORMATION

**Director of Sports Information:**

Don Harrison

Office: 203/371-7970

Home: 203/374-1170

Fax: 203/365-7512

**Graduate Assistant, Sports Information:**

Rick Ferris '91

Office: 203/371-7979

## Table of Contents

<b>UNIVERSITY PROFILE</b>	.. Inside Front Cover
<b>QUICK FACTS</b>	1
<b>1992 PREVIEW</b>	2-3
<b>1992 ROSTER</b>	3
<b>HEAD COACH BIPPY LUCKIE</b>	5
<b>ASSISTANT COACHES, TRAINER</b>	7
<b>CAPTAIN MICHELLE PALMER</b>	9
<b>THE RETURNEES:</b>	
Bogue, Cavaliere, DuBack	11
Ertl, Melchiona	13
O'Donnell, Van Ort, Wright	15
<b>THE NEWCOMERS:</b>	
Agosti, DiFulvio, Romanas, Scacciaferro	17
<b>1991 GAME-BY-GAME</b>	19
<b>1991 STATISTICS, NECC</b>	21
<b>YEAR-BY-YEAR RECORD</b>	23
<b>ALL-TIME RECORDS</b>	24-25
<b>NCAA TOURNAMENTS</b>	27
<b>ALL-AMERICA SELECTIONS</b>	29
<b>LADY PIONEER HONOR ROLL</b>	31
<b>1992 TEAM PHOTO</b>	..... Inside Back Cover
<b>1992 SCHEDULE</b>	Back Cover

## CREDITS

**Editor:** Don Harrison

**Writers:** Rick Ferris '91, Don Harrison

**Photography:** Ed Brinsko

**Typesetting:** Kiagraphics, Bridgeport, CT

**Printing:** Stebco Printers, Inc., Watertown, CT

## ABOUT THE COVER

Seniors Becky Van Ort, Shari Wright and Renee Melchiona (from left) hope to have a grip on a third straight NCAA Tournament bid.

# Seven returning all-stars keep Lady Pioneers strong

If the old axiom "It's the quality, not the quantity that matters" holds true, then Coach Bippy Luckie's 1992 Lady Pioneers are headed for another highly successful softball season.

An All-America and six other players who made at least one all-star team return from last season's 27-8 squad — a squad which earned Sacred Heart its second straight NCAA Tournament bid and eighth in the past decade.

Heading the returnees is second-team All-America centerfielder **Michelle Palmer** (Norwalk, CT), who established a national batting record for Division II players (.593) and a school record for stolen bases with 27. Palmer, a junior, earned a myriad of other honors including New England Collegiate Conference Co-Player of the Year and all-Northeast Region. She was elected captain for 1992.

Pitching stars **April Ertl** (Newtown, CT) and **Keri O'Donnell** (Ronkonkoma, NY), who shared all of the Lady Pioneers' assignments in 1991, are also back. Ertl, whose assortment of pitches accounted for a multitude of ground-ball outs, assembled a 16-7 record and 0.89 earned run average as a sophomore, earning all-NECC honors. O'Donnell, NECC Co-Rookie of the Year as a freshman, complemented her 11-1 pitching record with a .347 batting average as a part-time outfielder.

The double-play combination of second baseman **Renee Melchiona** (Ronkonkoma, NY) and shortstop **Becky Van Ort** (Albany, NY), both seniors, and junior third baseman **Maria Cavaliere** (Stamford, CT) combine defense with strong bats. Melchiona, an all-Northeast Region and all-NECC selection in her first season with the team, batted .343 with 21 RBI. Van Ort also made an impressive debut, hitting .313, driving in 31 runs and rapping a team-leading four triples. She was an NECC all-star.

Cavaliere made the most of her first opportunity to play regularly, batting .340 with a team-high 12 doubles. She was a second-team NECC all-star.

Finally, **Nicole Duback** (Westerly, RI) was a second-team NECC all-star as a freshman on the strength of her .355 average as a designated hitter. This season, DuBack could see action as DH, in the outfield or even behind the plate.

There are three major losses from last season's team. Graduation claimed first baseman **April King**, a first-team NECC all-star and second-team Northeast Region choice, who produced a .409 average and a team-leading 33 runs batted in, and catcher **Donna Charchenko**, who topped the squad with four home runs and batted .293. Charchenko was named all-NECC and all-Northeast Region. Leftfielder and 1991 captain **Tisha Johnson** (.284) withdrew from school and returned home to California.

The most intriguing of the newcomers, four-year basketball star **Elaine Agosti** (Bridgeport, CT), may fill the void at first base or could start in the outfield.

## 1992 Lady Pioneers

No.	Name	Cl.	Pos.	Ht.	B/T	High School/Hometown
2	*Shari Wright	Sr.	IF	5-10	R/R	Rex Putnam/Milwaukie, OR
4	*Nicole BuBack	So.	C/OF	5-3	L/R	Lebanon/Westerly, RI
5	**Michelle Palmer	Jr.	OF	5-3	L/L	Norwalk/Norwalk
8	*April Ertl	Jr.	P/OF	5-2	R/R	Newtown/Newtown
9	Michelle Scacciaferro	So.	OF	5-5	L/L	East Lyme/Niantic
20	*Maria Cavaliere	Jr.	3B	5-8	R/R	Westhill/Stamford
21	*Renee Melchiona	Sr.	P/2B	5-6	R/R	Connetquot/Ronkonkoma, NY
23	*Becky Van Ort	Sr.	SS	5-4	R/R	Maple Hill/Albany, NY
26	Amy Romanas	Fr.	OF	5-8	R/R	St. Peter Marion/Worcester, MA
30	*Lori Bogue	Jr.	Util	5-7	R/R	St. Joseph/Bridgeport
31	Lisa DiFulvio	Fr.	C	5-6	R/R	New Canaan/New Canaan
32	*Keri O'Donnell	So.	P/OF	5-5	L/L	Connetquot/Ronkonkoma, NY
35	Elaine Agosti	Sr.	IF/OF	5-8	R/R	Notre Dame/Bridgeport

\* Lettermen

\*\* Captain

Head Coach: Elizabeth Luckie '85 (4th year, 90-27-1)

Assistant Coaches: Pam London '86

Lynn Rocheleau (Eastern Connecticut '89)

Director of Athletics: Dave Bike '69

Director of Sports Medicine: Mike Weild (Wright State '86)

Graduate Assistant Trainer: Helene Dakin (North Adams State '90)

Manager: Lori Bogue '93

Although Agosti has yet to play an inning for Sacred Heart, she's no stranger to the game, having earned all-tournament honors at Notre Dame of Fairfield.

A promising freshman, **Lisa DiFulvio** (New Canaan, CT), is expected to take over behind the plate. Senior **Shari Wright** (Milwaukie, OR), who hit .368 as a reserve infielder last spring, will complete the starting lineup, either at first base or in the outfield.

Rounding out the squad are sophomore outfielder **Michelle Scacciaferro** (Niantic, CT), a team member for the first time; freshman outfielder **Amy Romanas** (Worcester, MA), and junior utility player **Lori Bogue** (Bridgeport, CT).

# Best Wishes.



## **FAIRFIELD FIRST** **BANK & TRUST COMPANY**

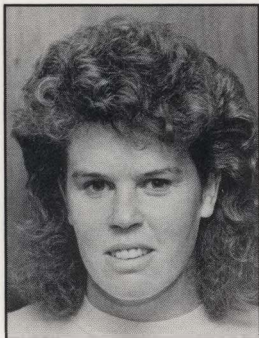
2000 Post Road  
Fairfield  
Connecticut  
(203) 259-6200

430 Main Street  
Norwalk  
Connecticut 06851  
(203) 846-0006

**Member FDIC**

**Equal Housing Lender**

## The Head Coach



### ELIZABETH "BIPPY" LUCKIE

Elizabeth "Bippy" Luckie has a unique perspective of Sacred Heart University's remarkable softball story.

As an All-America shortstop, she led the Lady Pioneers to three straight NCAA Tournaments, capped by a third-place finish in the 1984 national championship. As head coach, she has directed Sacred Heart to two straight NCAA Tournament appearances, two New England Collegiate Conference titles and a three-year record of 90-27-1 (.767.).

"I learned a lot as a player from my predecessor, Pete DiOrio," she says. "While I didn't always agree with his handling of players, I liked his strategy; he knew so much about the game. What I learned from him has worked for me as a coach."

Luckie, who is also the University's Assistant Athletic Director and head coach of the women's volleyball team, is regarded as one of Sacred Heart's finest all-round athletes. A slashing hitter with extra-base power, she compiled a career batting average of .370 and still holds eight offensive records. She was a first-team Converse All-America as a senior and a second-team selection as a junior.

During her three seasons as a player, the Lady Pioneers compiled a lustrous 126-17-1 record and finished fourth, third and fourth in successive NCAA national tournaments.

On the basketball court, the 29-year-old native of Ogdensburg, N.Y. was the team's leading scorer for both seasons of eligibility, averaging 19.9 points in 1982-83 and 14.6 in 1983-84, earning all-NECC recognition in both years. She still holds the University's single-game record with 42 points against Rhode Island College (2/21/83). Against New Hampshire College (2/12/84), she converted 19 of 20 free throws.

Luckie transferred to Sacred Heart University from Jefferson Community College in Watertown, N.Y., where she received All-America honors in softball and basketball. A dean's list student at Sacred Heart, she received a B.S. in criminal justice in 1985. She resides in Bridgeport.

**Coach Luckie receives a celebratory dousing following the 1-0 NECC Playoff victory over New Haven.**

#### The Luckie Ledger

	W-L-T	Pct.	NECC	
1989	25-14	.641	9-5	3rd
1990	38-5-1	.875	14-0	1st
1991	27-8	.771	12-2	1st
<hr/>				
Totals	90-27-1	.767	35-7	.833



# **Merit Insurance**

Home • Auto • Life • Business

1000 Lafayette Blvd.  
Bridgeport, CT 06604  
367-5328

Call

Bill Carroll - Rita Kanuch  
Bob Sheftic - Brian Dunne  
Jim Benson - Sean Carroll

## The Assistant Coaches



### PAM LONDON

Entering her fourth season as an important member of the Lady Pioneer softball coaching staff. Was a three-year starter at second base for Sacred Heart University (1984-86), appearing in 131 games and two NCAA Division II Final Fours. An unselfish player who still holds the school's record for sacrifice bunts, London was a tri-captain of the 1986 squad.

London holds a B.S. in political science with a minor in economics. She is co-owner and operator of Commercial Cleaning Service in Bridgeport.

"Pam London is a great asset to the program," says Head Coach Bippy Luckie. "She is very knowledgeable in the game and provides leadership, enthusiasm and dedication."



### LYNN ROCHELEAU

Beginning her first full season as assistant coach, Lynn brings a plethora of experience to Sacred Heart. Played four years of softball at Eastern Connecticut where she earned a B.S. in communications in 1989. Pitched the softball team to NCAA Division III Final Four finishes in all four seasons, including a national championship in 1987. The team finished no lower than third during her four years. Lynn, who

also caught and played first base, was named All-America utility player in her senior year. Also played two years of volleyball at ECSU. Was a three-sport athlete (volleyball, basketball and softball) at Andrew Warde High of Fairfield, from which she graduated in 1984.

The 26-year-old Hamden resident is employed by Federal Express in Stratford.



### HELENE DAKIN

#### Trainer

Beginning her first year as a graduate assistant, Dakin's responsibilities include working with the women's volleyball team in addition to her duties as softball trainer. Received a B.A. in biology at North Adams (Mass.) State in 1990. Is pursuing a Masters in Arts and Teaching (MAT) at Sacred Heart. Reports to Director of Sports Medicine Mike Weild.

# **The Student Activities Office**

**Mary Hobbsie Jenny Pom Carmel Shawn Cindy  
Denise Tom Cathy Tip Melanie Danielle**

**Wish the  
Lady Pioneers  
the Best of Luck  
in '92.**

# The 1992 Captain



## MICHELLE PALMER 5

**Junior 5-3 115 CF Norwalk, CT**

Michelle Palmer's remarkable accomplishment is validated on Page 246 of the *Official 1992 NCAA Baseball and Softball* guide, under the heading "Batting Average." It reads: "Season .593, Michelle Palmer, Sacred Heart, 1991 (67 for 113)."

Sure enough, the Lady Pioneers' All-America centerfielder established a national batting record for Division II players last season, eclipsing the previous high of .551, shared by Michelle Agnew of Liberty (1983) and Latesa Peebles of North Carolina Central (1990). In addition, Palmer glittered in the field and on the bases, surpassing her own Sacred Heart single-season record with 27 stolen bases and extending her career mark to 46 (in just 49 attempts). With justification, a myriad of post-season honors came her way: Second-team All-America (for the second straight year), first-team All-Northeast Regional and All-New England Collegiate Conference, NECC Co-Player of the Year, Mid-Atlantic Regional Tournament All-Star. Michelle's teammates were impressed enough to vote her captain — as a junior — for 1992.

Palmer's debut as a Sacred Heart freshman was no less noteworthy. She batted a team-high .484 along with 19 stolen bases and 41 runs scored, earning second-team All-America, NECC Rookie of the Year, All-Northeast and All-NECC honors.

Last summer, Michelle made the quantum leap to the Raybestos Brakettes, contributing her outstanding speed and all-round skills as a backup outfielder to the club's 22nd ASA national softball championship.

At Norwalk High, Michelle starred in softball, basketball and field hockey, receiving All-State honors twice in field hockey and once in softball. On the scholastic side, she was selected Scholar-Athlete of the Year and was a member of the National Honor Society.

**Personal:** Michelle Leigh Palmer. Born: 12/21/71. Major: Psychology. Made the Dean's List last semester. Hobbies: Tennis, Nintendo. Goal: Graduate school.

### CAREER STATISTICS

	AB	R	H	2B	3B	HR	RBI	BB	SO	SB/C	AVG.	PO	A	E	PCT.
1990	128	41	62	8	1	0	15	8	17	19/1	.484	52	6	4	.935
1991	113	37	67	2	0	0	7	11	14	27/2	.593	60	0	2	.968
Total	241	78	129	10	1	0	22	19	31	46/3	.535	112	6	7	.952



**"I like the  
tuition"**

*Al Paolozzi, Class of '91*



**"I like the  
attention"**

*Christine DeRosa, Class of '91*



**"I like the  
faculty"**

*Craig Reeves, Class of '92*



**"I like the  
atmosphere"**

*Lucy Vicencio, Class of '93*



**"I like the  
challenge"**

*Elijah Finley, Class of '92*



**"I like the  
location"**

*Simona Culet, Class of '92*

## **There's a lot to like about Sacred Heart University**

For some it's the small class sizes, the personal attention. For others it's our convenient and secure location and our flexible scheduling policies. For many it's the faculty and friends. For all, it's the quality of education and the singular spirit that sets Sacred Heart University apart.

If you're considering full-time, part-time or post-graduate education, you owe it to yourself to investigate Sacred Heart University. Call us at 1-800-333-8934, or come by for a visit. Sacred Heart University is located in a lovely residential area in the town of Fairfield, Connecticut, just off the Merritt Parkway at Exit 46 or 47.



**SACRED  
HEART  
UNIVERSITY**

**1-800-333-8934**

SACRED HEART UNIVERSITY, 5151 PARK AVENUE  
FAIRFIELD, CONNECTICUT 06432-1000

***Where personal attention leads to personal achievement***

## The Returnees



### LORI BOGUE 30

**Junior 5-7 Utility Bridgeport, Conn.**

With a talented group of outfielders on the roster, Bogue will help in a reserve role. Will also serve as team manager. Puts her writing skills to use as sports editor of the school's undergraduate newspaper, "Spectrum." Won the Allyson Rioux Book Award and the Dr. Brooks Memorial Award. Also competes in volleyball and soccer.

**Personal:** Lori Loraine Bogue. Born: 8/18/71. Major: English/education. Hobbies: Playing guitar, writing and taking care of her dogs. Sports heroes: Dottie Richardson, Carl Yastrzemski, Wade Boggs and Bill Buckner.

#### CAREER STATISTICS

	AB	R	H	2B	3B	HR	RBI	BB	SO	SB/C	AVG.	PO	A	E	FPCT.
1990	8	0	1	0	0	0	1	0	2	0/0	.125	0	0	0	.000
1991	1	0	0	0	0	0	0	1	0	0/0	.000	0	0	2	.000
Total	9	0	1	0	0	0	1	1	2	0/0	.111	0	0	2	.000



### MARIA CAVALIERE 20

**Junior 5-8 3B Stamford, Conn.**

Had a solid sophomore year, batting .340 along with 12 doubles, two home runs and 13 RBI. Earned second-team All-NECC laurels. Expected to start again at third. Plays volleyball for Sacred Heart in the fall. Made the Dean's List during the fall. A three-sport standout at Westhill High, in softball, volleyball and basketball. Won the Allyson Rioux Memorial

Scholarship Award named for the late Sacred Heart coach and Westhill athlete.

**Personal:** Maria Ann Cavaliere. Born: 11/4/71. Major: Social work. Sports hero: Howard Johnson. Goals: Earn master's degree in social work and get into a school system and coach.

#### CAREER STATISTICS

	AB	R	H	2B	3B	HR	RBI	BB	SO	SB/C	AVG.	PO	A	E	FPCT.
1990	96	20	22	0	0	0	7	4	10	0/0	.229	7	9	6	.727
1991	103	15	35	12	1	2	13	3	10	2/0	.340	23	55	12	.857
Total	199	35	57	12	1	2	20	7	20	2/0	.286	30	64	18	.839



### NICOLE DUBACK 4

**Sophomore 5-3 C/OF Westerly, R.I.**

Played a key role on the Lady Pioneers' 1991 NCAA Division II Regional team, batting .355 with six stolen bases. Like Michelle Palmer is a slap hitter. Earned second-team All-NECC honors as a freshman. A rarity indeed as she owns the stolen base record at Lebanon High School as a catcher. Will back up newcomer Lisa DiFulvio behind the plate and

should start either in the outfield or at DH. Played both basketball and volleyball in addition to softball at Lebanon. Hit a whopping .677 as a senior.

**Personal:** Nicole L. DuBack. Born: 10/19/71. Major: Biology. Hobbies: Waterskiing, swimming. Sports hero: Isiah Thomas. Goals: Get a good job and a new car.

#### CAREER STATISTICS

	AB	R	H	2B	3B	HR	RBI	BB	SO	SB/C	AVG.	PO	A	E	FPCT.
1991	62	9	22	0	0	0	5	5	3	6/2	.355	2	1	0	1.000



***Best Wishes,***

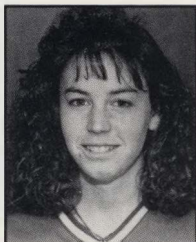
**Mary Ann Haller**

**Director**

**Cassie Fedeli**

**Asst. Food Service Director**

## The Returnees



### APRIL ERTL 8

**Junior 5-2 P/OF Newtown, Conn.**

Replacing your top two pitchers, including an All-American, would be a challenge for any coach. This was the task facing Coach Luckie last season. Enter April Ertl. Leading the Lady Pioneers to their second consecutive NCAA Regional berth, April compiled a 16-7 record and 0.89 ERA as a sophomore, earning first-team All-NECC honors. A

two-sport standout at Newtown High, playing soccer and softball. Led the Newtown softball team to the Class L championship game in her senior year.

**Personal:** April Dawn Ertl. Born: 4/21/71. Major: Management. Hobbies: Playing tennis, skiing. Goal: Become a retail manager.

#### CAREER STATISTICS

PITCHING													
	G/GS	CG	SH	IP	H	R	ER	BB	SO	W	L	SV	ERA
1990	2/1	1	0	9	6	4	2	1	9	1	0	0	1.56
1991	24/20	15	6	150	101	36	19	28	45	16	7	1	0.89
<b>Total</b>	<b>26/21</b>	<b>16</b>	<b>6</b>	<b>159</b>	<b>107</b>	<b>40</b>	<b>21</b>	<b>29</b>	<b>54</b>	<b>17</b>	<b>7</b>	<b>1</b>	<b>0.92</b>

BATTING															
	AB	R	H	2B	3B	HR	RBI	BB	SO	SB/C	AVG.	PO	A	E	FPCT.
1990	39	6	10	2	0	0	4	6	6	1/0	.256	2	4	2	.750
1991	5	1	1	0	0	0	0	0	0	0/0	.200	1	40	6	.872
<b>Total</b>	<b>44</b>	<b>7</b>	<b>11</b>	<b>2</b>	<b>0</b>	<b>0</b>	<b>4</b>	<b>6</b>	<b>6</b>	<b>1/0</b>	<b>.250</b>	<b>3</b>	<b>44</b>	<b>8</b>	<b>.855</b>



### RENEE MELCHIONA 21

**Senior 5-6 2B/P Ronkonkoma, N.Y.**

Played a major part in the Lady Pioneers' 1991 success story, batting .343 with five doubles and 21 RBI, earning first-team All-Northeast and All-NECC honors. Also played in the NESCA all-star game. Transferred to Sacred Heart last year from Onondaga Community College, where she had a .429 career batting average. Could be called upon to

pitch for this year's team. Competed in the renowned Empire State Games in New York.

**Personal:** Renee Marie Melchiona. Born: 1/25/70. Major: Management. Hobby: Skiing. Goal: Find a good job.

#### CAREER STATISTICS

	AB	R	H	2B	3B	HR	RBI	BB	SO	SB/C	AVG.	PO	A	E	FPCT.
1991	102	22	35	5	1	0	21	4	4	5/0	.343	76	82	10	.940

# H.H.H. CLEANING SERVICE, INC.

---

*"For All Your  
Commercial Cleaning Needs"*



**(203) 372-9408**

## The Returnees



### KERI O'DONNELL 32

**Sophomore 5-4 P/OF Ronkonkoma, N.Y.**

Made an immediate impact as a freshman last spring, batting .347 with 12 stolen bases and, on the mound, recording an 11-1 mark with an ERA of 2.08. This combination added up to Keri sharing the NECC Rookie of the Year award. Was the starting goalkeeper for the soccer team in the fall. A rare four-sport standout in high school at Connetquot,

O'Donnell competed in field hockey, softball, basketball and volleyball. All-league and all-county in softball and field hockey. All-league in basketball.

**Personal:** Keri A. O'Donnell. Born: 1/24/72. Major: Secondary education. Hobby: Shopping. Sports hero: Magic Johnson. Goal: Become a famous model.

#### CAREER STATISTICS

PITCHING															
	G/GS	CG	SH	IP	H	R	ER	BB	SO	W	L	SV	ERA		
1991	15/15	10	3	90.2	65	36	27	43	16	11	1	0	2.08		
BATTING															
	AB	R	H	2B	3B	HR	RBI	BB	SO	SB/C	AVG.	PO	A	E	FPCT.
1991	75	17	26	2	0	0	4	0	14	12/0	.347	14	20	0	1.000



### BECKY VAN ORT 23

**Senior 5-3 SS Castleton, N.Y.**

Turned in a strong junior season in her Sacred Heart debut, batting .313, ranking second on the team in RBI (31), and leading in triples (4). Earned first-team All-NECC honors. Competed in the annual Empire State Games in New York. Transferred to Sacred Heart last year from Onondaga Community College. While at Onondaga, Becky belted 18 triples

in two seasons and was named to the 1990 all-regional team.

**Personal:** Becky J. Van Ort. Born: 9/4/70. Major: Illustration. Goal: Pursue a master's degree.

#### CAREER STATISTICS

	AB	R	H	2B	3B	HR	RBI	BB	SO	SB/C	AVG.	PO	A	E	FPCT.
1991	115	18	36	6	4	2	31	11	4	3/0	.313	33	133	21	.936



### SHARI WRIGHT 2

**Senior 5-10 1B/OF Milwaukie, Ore.**

Expected to start either at first base or in the outfield. One of the hardest workers on the squad. Made the most of limited action as a junior, batting .368 in 19 at bats. A perennial Dean's List student at Sacred Heart. A three-sport player at Rex Putnam High School in Oregon, competing in volleyball, basketball and softball. Made the National Honor Society and

was the Scholar-Athlete for four years as well. Named second-team all-league her senior year and was honorable mention as a junior.

**Personal:** Shari Lynn Wright. Born: 3/11/67. Major: Management/Accounting. Hobbies: All athletic activities, crafts, reading, working out and spending time with friends. Goal: A position in the marketing/advertising department of a large company.

#### CAREER STATISTICS

	AB	R	H	2B	3B	HR	RBI	BB	SO	SB/C	AVG.	PO	A	E	FPCT.
1991	19	6	7	1	0	0	3	2	3	1/0	.368	9	0	0	1.000

*Best of Success Lady Pioneers, in '92*

***“The Winning Formula”:***

**TEAM**



**\* Work**



**\* Goals**



**\* Pride**



**\* Sacrifice**



**\* Sportsmanship**

THE: PALMER  
DUDEK  
GAITA  
BUER (FAMILIES)

***— Good luck, 5'er! —***

## The Newcomers

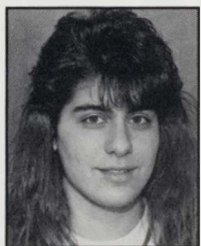


### **ELAINE AGOSTI 35**

**Senior 5-8 IF/OF Bridgeport, Conn.**

The most intriguing of the newcomers. In this academic year, Elaine will have played and started for all five women's teams Sacred Heart currently offers — softball, basketball, volleyball, soccer and cross country. A basketball co-captain, she finished her four-year career third on the school's all-time scoring list with 1,185 points. Expected to start at first base or in the outfield. Was an all-tournament selection in softball at nearby Notre Dame High. A perennial Dean's List student and winner of art awards at Sacred Heart.

**Personal:** Elaine Elizabeth Agosti. Born: 3/3/70. Major: Art. Hobbies: Art, playing sports, cooking. Goal: Become an illustrator.



### **LISA DiFULVIO 31**

**Freshman 5-6 C New Canaan, Conn.**

Expected to start at catcher as a freshman. A four-year letterman in volleyball and softball at New Canaan High, gaining All-FCIAC and All-State honors in volleyball and second-team FCIAC honors in softball.

**Personal:** Lisa DiFulvio. Born: 6/27/71. Major: Undecided. Hobby: Snowboarding.

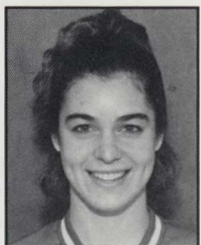


### **AMY ROMANAS 26**

**Freshman 5-8 OF Worcester, Mass.**

Will be asked to serve in a reserve role as a freshman. Plays for the soccer team in the fall and the basketball team in the winter. Was a four-sport letterman at St. Peter Marion High, competing in basketball, softball, soccer and swimming.

**Personal:** Amy "Red" Romanas. Born: 5/14/73. Major: Biology. Hobbies: Camping, sports, spending time with friends. Sports heroes: Anne Davis, Bo Jackson. Goal: Pursue a degree in physical therapy and work at the Boston Children's Hospital.



### **MICHELLE SCACCIAFERRO 9**

**Sophomore 5-8 OF Niantic, Conn.**

Sister of Sacred Heart defensive back Marc Scacciaferro. Will serve in a reserve role as a sophomore. A three-sport letterman at East Lyme High in softball, basketball and field hockey. Batted .475 as a senior, earning All-State honors as a sophomore and senior. An honor roll student at East Lyme.

**Personal:** Michelle Scacciaferro. Born: 2/10/72. Major: Criminal Justice/Spanish. Hobbies: Swimming, eating, being with friends and family. Sports hero: Carl Yastzremski. Goal: Become an investigator or be involved with the FBI in forensic ballistics.

***Good Luck Amy  
and the  
Lady Pioneers***

**COLEBROOK'S COVE, INC.**

**2 Hastings Avenue  
Worcester, MA 01606**

**508-856-7469**

# 1991 Game-by-Game

## SOUTHERN TRIP — Ocoee, Florida

Date	Opponent	Score	Record	NECC
3/11	Chapman	L 0-2	0-1	
3/11	Southeast Missouri State	L 0-2	0-2	
3/12	Central Missouri State	L 2-3	0-3	
3/12	Northwest Missouri State	W 3-2	1-3	
3/14	University of Maine (Orono)	W 5-3	2-3	
3/14	Evansville	L 0-1	2-4	

## NORTHERN SCHEDULE

Date	Opponent	Score	Record	NECC
3/20	at Quinnipiac	W 4-0	3-4	
3/20	at Quinnipiac	W 7-5	4-4	
3/27	AIC	W 9-3	5-4	
3/27	AIC	W 17-8	6-4	
4/2	*New Haven	L 0-1	6-5	0-1
4/2	*New Haven	W 2-0	7-5	1-1
4/6	*at New Hampshire College	W 6-5	8-5	2-1
4/6	*at New Hampshire College	W 13-1	9-5	3-1
4/7	*at Lowell	W 10-0	10-5	4-1
4/7	*at Lowell	W 7-4	11-5	5-1
4/10	*at Bridgeport	W 7-0	12-5	6-1
4/10	*at Bridgeport	W 5-0	13-5	7-1
4/13	*Franklin Pierce	W 2-1	14-5	8-1
4/13	*Franklin Pierce	W 10-4	15-5	9-1
4/14	Merrimack	W 3-1	16-5	
4/14	Merrimack	W 4-0	17-5	
4/16	*Southern Connecticut	W 13-3	18-5	10-1
4/16	*Southern Connecticut	W 7-2	19-5	11-1
4/18	Assumption	W 3-1	20-5	
4/18	Assumption	W 10-2	21-5	
4/20	*Keene State	W 6-0	22-5	12-1
4/20	*Keene State	L 2-3	22-6	12-2
4/26	**New Haven	W 1-0	23-6	
4/29	Bentley	W 7-0	24-6	
4/29	Bentley	W 13-0	25-6	
5/3	at Southampton (LIU)	W 8-2	26-6	
5/3	at Southampton (LIU)	W 8-2	27-6	
5/11	***Bloomsburg	L 0-5	27-7	
5/11	***Merrimack (9 inn.)	L 2-3	27-8	

\* New England Collegiate Conference Games

\*\* New England Collegiate Conference Playoff

\*\*\* NCAA Mid-Atlantic Regionals at Sacred Heart University

***Best Wishes  
to the  
LADY PIONEERS***

***from***



**World Famous Cinnamon Rolls**

**CINNABON**

**Trumbull Shopping Park**

# 1991 Statistics

W-L: 27-8 NECC: 12-2 (1st)

## BATTING

	G	AB	R	H	2B	3B	HR	RBI	BB	SO	SAC	SB/C	AVG
MICHELLE PALMER	34	113	37	67	2	0	0	7	11	14	2	27/2	.593
April King	35	110	30	45	9	2	1	33	8	4	17	4/0	.409
SHARI WRIGHT	12	19	6	7	1	0	0	3	2	3	0	1/0	.368
NICOLE DUBACK	31	62	9	22	0	0	0	5	5	3	1	6/2	.355
KERI O'DONNELL	30	75	17	26	2	0	0	4	0	14	7	12/0	.347
RENEE MELCHIONA	35	102	22	35	5	1	0	21	4	4	8	5/0	.343
MARIA CAVALIERE	33	103	15	35	12	1	2	13	3	10	0	2/0	.340
BECKY VAN ORT	35	115	18	36	6	4	2	31	11	4	5	3/0	.313
Donna Charchenko	34	99	17	29	6	0	4	17	15	13	1	2/0	.293
Tisha Johnson	35	102	12	29	6	0	0	12	8	12	4	4/0	.284
Chris Kanuch	15	8	2	2	0	0	0	3	1	0	0	0/0	.250
Heather Crilly	26	50	4	11	1	0	0	2	6	6	2	1/0	.220
APRIL ERTL	20	5	1	1	0	0	0	0	0	0	0	0/0	.200
LORI BOGUE	3	1	0	0	0	0	0	0	1	0	0	0/0	.000
Kathleen Faherty	13	3	3	0	0	0	0	0	1	0	0	0/0	.000
<b>Totals</b>	35	967	193	345	50	8	9	151	76	87	47	67/4	.357

## PITCHING

	G/GS	CG	SH	IP	SO	BB	W	L	SV	ERA
APRIL ERTL	24/20	20	6	150	45	28	16	7	1	0.89
KERI O'DONNELL	15/15	10	3	90.2	16	43	11	1	0	2.08
<b>Totals</b>	35	30	9	240.2	61	71	27	8	1	1.34

## FIELDING

	PO	A	E	Pct.
Team	656	380	71	.936

Capitals indicate 1992 returnees.

# New England Collegiate Conference

## 1991 Final Standings

Team	NECC	Pct.	Overall	Pct.
SACRED HEART*	12-2	.857	27-8	.771
New Haven	12-2	.857	36-8	.818
Keene State	11-3	.786	24-12-1	.662
New Hampshire	7-7	.500	13-16	.448
Bridgeport	5-9	.357	21-17	.553
Lowell	4-10	.286	9-23	.281
Franklin Pierce	3-11	.214	10-16	.385
Southern Connecticut	3-11	.214	9-31-2	.238



\*Sacred Heart defeated New Haven, 1-0, in a one-game playoff to decide regular-season title and automatic berth in NCAA Mid-Atlantic Tournament

### Co-Players of the Year

MICHELLE PALMER, SACRED HEART  
Lori Miller, New Haven

### Co-Rookies of the Year

KERI O'DONNELL, SACRED HEART  
Kim Pranulis, Keene State

### Coach of the Year

ELIZABETH LUCKIE, SACRED HEART

# **Gaita Electric**

ELECTRICAL CONTRACTORS  
INDUSTRIAL • RESIDENTIAL • COMMERCIAL

121 Dodgingtown Road, Bethel, Connecticut 06801  
**(203) 748-0187**  
*Vincent Gaita*

ADDITIONS  
ALTERATIONS

ALUM. - VINYL  
WOOD SIDING

## **STEVEN DUDEK & SON'S INC.**

*General*

***Building Contractors***

50 ALBIN ROAD  
STAMFORD, CONN. 06902

FREE ESTIMATES  
**(203) 348-6995**

***Greater Danbury***

# **SEAMLESS GUTTERS**

Full Gutter Service — Copper Work — Copper Flashing

P.O. Box 341, Bethel, CT 06801  
*Vin Gaita, Owner*

FREE ESTIMATES **792-0429**

VINYL & WOOD

ALUMINUM SIDING & WOOD DECKS

**COMPLETE HOME IMPROVEMENT**

# **S.M. DUDEK**

**HOME IMPROVEMENT**

MICHAEL DUDEK  
22 Hirsch Road, Stamford, CT 06905

FREE ESTIMATES **348-5803**

## Year-by-Year Results

Year	Head Coach	W-L-T	NECC	Post-Season
1980	Pete DiOrio	17-5		AIAW World Series at Cal. State Sacramento
1981	Pete DiOrio	27-3		AIAW East Regionals
1982	Pete DiOrio	29-7		3-3 — Third place in NCAA Div. II Championships at Stratford, CT
1983	Pete DiOrio	37-5-1		3-3 — Fourth place in NCAA Div. II Championships at Orange, CA
1984	Pete DiOrio	42-6	14-0, 1st	4-3 — Third place in NCAA Div. II Championships at Sioux Falls, SD
1985	Pete DiOrio	47-6	14-0, 1st	3-2 — Fourth place in NCAA Div. II Championships at Northridge, CA
1986	Pete DiOrio	31-12	7-5	
1987	Pete DiOrio	40-7	14-0, 1st	3-2 — Fourth place in NCAA Div. II Championships at Quincy, IL
1988	Pete DiOrio	41-10	10-2, 1st	2-2 — Second place in NCAA Div. II Regionals at Sacred Heart
1989	Bippy Luckie	25-14	9-5, 3rd	
1990	Bippy Luckie	38-5-1	14-0, 1st	0-2 — NCAA Div. II Regionals at Bloomsburg, PA
1991	Bippy Luckie	27-8	12-2, 1st	0-2 — NCAA Div. II Regionals at Sacred Heart

### COACHES' CUMULATIVE RECORDS

Coach	Years	W-L-T	Pct.	NECC	NCAA
Pete DiOrio	9	311-61-1	.835	59-7 .894	18-15 .545
Bippy Luckie	3	90-27-1	.767	35-7 .833	0-4 .000
Totals	12	401-88-2	.819	94-14 .870	18-19 .486

# Kiagraphics

- Extensive Type Library
- State-of-the-Art Capabilities
- Fast Turn Around

### KIAGRAPHICS

TYPESETTING SERVICES

1438 Park Avenue, Bridgeport, CT 06604  
(203) 367-0450 • FAX (203) 336-5381

- Reasonable Rates
- Accurate Proof Reading
- Trade Oriented

*"For the Type of Your Life"*

★ 20% OFF YOUR FIRST ORDER IF YOU MENTION THIS AD!! ★

# All-Time Records

## INDIVIDUAL BATTING

### Batting Average

Season:	Michelle Palmer, 1991 (67-113)	.593*
Career:	Pat Suchower, 1980-83 (158-405)	.390

### Home Runs

Game:	Elizabeth Luckie vs. Southern Conn. 4/23/85	2
	Vicki Kennedy vs. Lowell 4/5/87	2
	Maryanne Piorek vs. Va. Commonwealth 4/11/87	2
	Alecia Stephenson vs. Assumption 3/27/90	2
	Alecia Stephenson vs. C.W. Post 4/23/90	2
Season:	Vicki Kennedy, 1987, 1990	11
Career:	Vicki Kennedy, 1987-90	31

### Runs Batted In

Game:	Elizabeth Luckie vs. Southern Conn. 4/23/85	6
	Sue Teoli vs. Virginia Commonwealth 4/9/86	6
Season:	Vicki Kennedy, 1990	44
Career:	Vicki Kennedy, 1987-90	123

### Runs Scored

Game:	Teal Whitaker vs. Bentley 4/12/81	5
Season:	Pat Suchower, 1983	55
	Elizabeth Luckie, 1985	55
Career:	Alecia Stephenson, 1987-90	149

### Hits

Game:	Vicki Kennedy vs. Franklin Pierce 4/14/90	5
Season:	Elizabeth Luckie, 1985	71
Career:	Alecia Stephenson, 1987-90	182

### Doubles

Game:	8 tied at 2	2
Season:	Alecia Stephenson, 1990	14
Career:	Alecia Stephenson, 1987-90	40

### Triples

Game:	Teal Whitaker vs. Coast Guard 4/1/81	2
	Sue Teoli vs. Southern Conn. 1986	2
Season:	Teal Whitaker, 1981	8
Career:	Pat Suchower, 1980-83	17

### Total Bases

Game:	Elizabeth Luckie vs. Quinnipiac 4/18/84	9
	Alecia Stephenson vs. C.W. Post 4/23/90	9
Season:	Elizabeth Luckie, 1985	110
Career:	Alecia Stephenson, 1987-90	310

### Stolen Bases

Game:	Michelle Palmer vs. Franklin Pierce 4/14/90	3
Season:	Michelle Palmer, 1991	27
Career:	Michelle Palmer, 1990-	46

### Walks

Game:	MaryHelen McCarthy vs. Keene State 3/28/81	4
	Maria Morris vs. New York Tech 4/14/82	4
	Pam London vs. C.W. Post 4/15/84	4
Season:	Pat Suchower, 1983	32
Career:	MaryHelen McCarthy, 1980-83	97

### At Bats

Game:	Elizabeth Luckie vs. Bloomsburg St. 5/11/84	10*
Season:	Elizabeth Luckie, 1985	185
Career:	Alecia Stephenson, 1987-90	597

## INDIVIDUAL PITCHING

### Wins

Season:	Debbie Tidy, 1984	31
Career:	Debbie Tidy, 1984-87	111

### Losses

Season:	April Ertl, 1991	7
	Debbie Tidy, 1986	7
Career:	Debbie Tidy, 1984-87	16

### Winning Percentage

Season:	Debbie Tidy, 1987 (31-2)	.939*
Career:	Debbie Tidy, 1984-87 (111-16)	.874*

### Earned Run Average

Season:	Debbie Tidy, (193 IP, 3 ER) 1985	0.11
Career:	Debbie Tidy, (906 IP, 19 ER) 1984-87	0.15*

### Appearances

Season:	Debbie Tidy, 1984	39
Career:	Debbie Tidy, 1984-87	139

### Games Started

Season:	Debbie Tidy, 1984	35
Career:	Debbie Tidy, 1984-87	117

### Complete Games

Season:	Debbie Tidy, 1984	34
Career:	Debbie Tidy, 1984-87	115

### Innings Pitched

Game:	Debbie Tidy vs. Bloomsburg State 5/11/84	23*
Season:	Debbie Tidy, 1984	258.1
Career:	Debbie Tidy, 1984-87	906

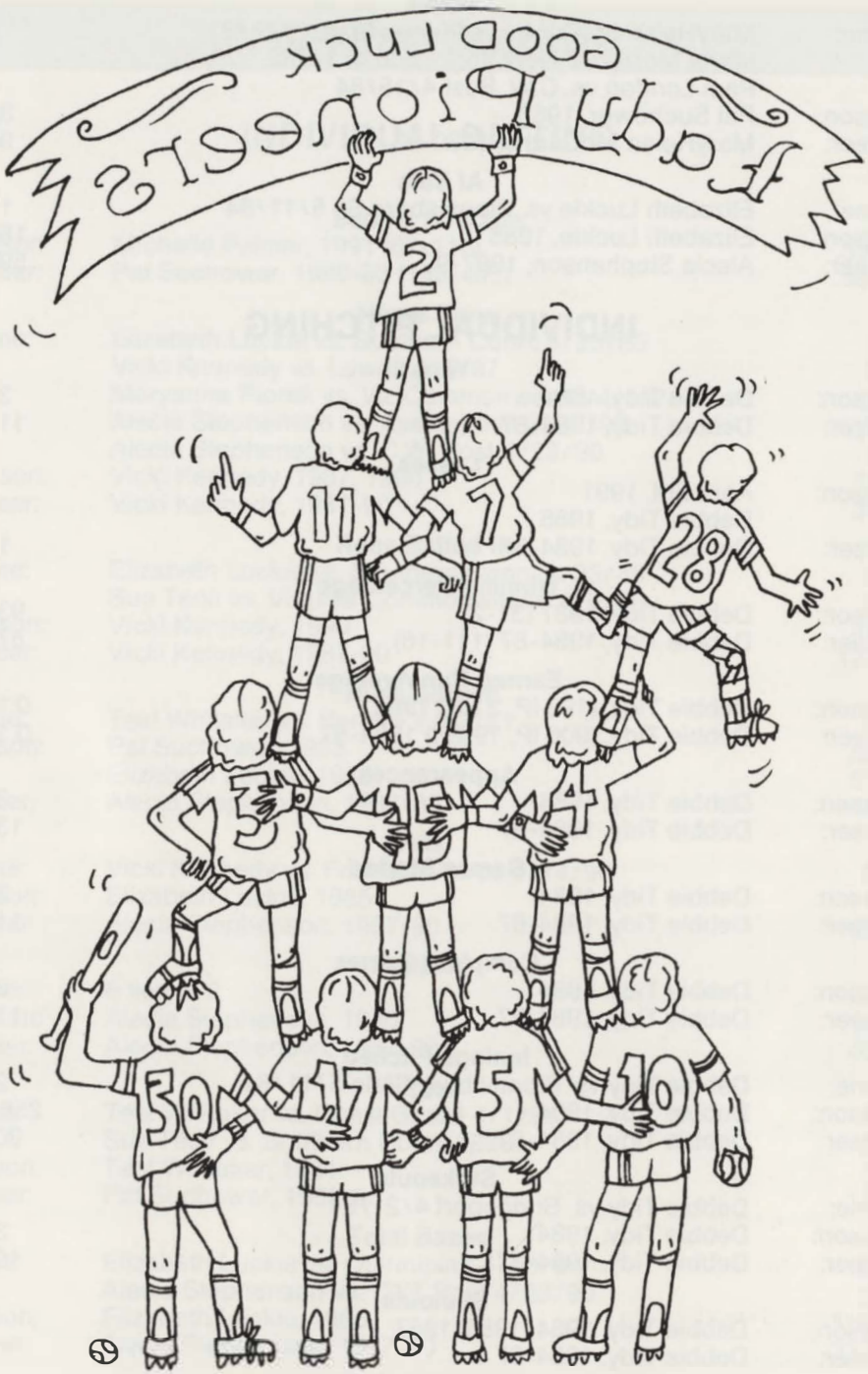
### Strikeouts

Game:	Debbie Tidy vs. Bridgeport 4/21/84	17
Season:	Debbie Tidy, 1984	348
Career:	Debbie Tidy, 1984-87	1080

### Shutouts

Season:	Debbie Tidy, 1984, 1985, 1987	23
Career:	Debbie Tidy, 1984-87	87

\*Division II national record.



... A LOYAL FRIEND  $\frac{1}{2}$  FAN ...

# NCAA Tournaments (8)

## 37 Games: 18-19 (.487)

1982 (3-3)

### Regionals at Pioneer Park, Fairfield, CT

Sacred Heart 8, Quinnipiac 1  
Ferris State 10, Sacred Heart 2  
Sacred Heart 1, Ferris State 0 (Finals)

### Final Four at Raybestos Memorial Field, Stratford, CT

Cal. State Northridge 1, Sacred Heart 0  
Sacred Heart 6, Northeast Missouri State 3  
Cal. State Northridge 1, Sacred Heart 0 (3rd Place)

1983 (3-3)

### Regionals at Pioneer Park, Fairfield, CT

Sacred Heart 4, Springfield 3  
Sacred Heart 2, Bloomsburg State 1  
Bloomsburg State 2, Sacred Heart 1  
Sacred Heart 2, Bloomsburg State 0 (Finals)

### Final Four at Cal. State Northridge, CA

Stephen F. Austin 5, Sacred Heart 0  
Sam Houston State 3, Sacred Heart 1 (4th Place)

1984 (4-3)

### Regionals at Pioneer Park, Fairfield, CT

Sacred Heart 5, Mankato State 0  
Sacred Heart 1, Bloomsburg State 0 (12 inn.)  
Bloomsburg State 3, Sacred Heart 0  
Sacred Heart 1, Bloomsburg State 0 (8 inn.)

### Final Four at Sioux Falls, SD

Sacred Heart 3, Akron 0  
Cal State Northridge 2, Sacred Heart 0  
Akron 2, Sacred Heart 1 (3rd Place)

1985 (3-2)

### Regionals at Pioneer Park, Fairfield, CT

Sacred Heart 8, C.W. Post 0  
Sacred Heart 7, AIC 0  
Sacred Heart 3, AIC 0 (Finals)

### Final Four at Cal. State Northridge, CA

Stephen F. Austin 2, Sacred Heart 0  
Akron 2, Sacred Heart 0 (9 inn.) (4th Place)

1987 (3-2)

### Regionals at Pioneer Park, Fairfield, CT

Sacred Heart 3, AIC 0  
Sacred Heart 1, Lewis 0  
Sacred Heart 5, Lewis 0 (Finals)

### Final Four at Quincy (Ill.) College

Fla. Southern 1, Sacred Heart 0  
Mankato State 4, Sacred Heart 1 (4th Place)

1988 (2-2)

### Regionals at Pioneer Park, Fairfield, CT

Sacred Heart 6, Bridgeport 3 (10 inn. tie-breaker)  
Cal. State Northridge 1, Sacred Heart 0  
Sacred Heart 2, Central Missouri State 1 (10 inn. tie-breaker)  
Cal State Northridge 8, Sacred Heart 0 (2nd Place)

1990 (0-2)

### Regionals at Bloomsburg, PA

AIC 3, Sacred Heart 2  
Bloomsburg 6, Sacred Heart 2

1991 (0-2)

### Regionals at Pioneer Park, Fairfield, CT

Bloomsburg 5, Sacred Heart 0  
Merrimack 3, Sacred Heart 2 (9 inn.)

## Friends of Sacred Heart Softball

Agosti Family  
Walter Becker  
Michael Benedetto  
Edward and Josephine Bonello  
Mike Bozzone and Family  
Brooklawn  
John and Kathi Buer  
Bob Cannone  
Alvin and Margaret Clinkscales  
Dr. and Mrs. Cernera, Anthony,  
Philip, Thomas, and Ann Marie  
C & P  
Virginia and John Croffy  
Ken and Diane DeStefano  
Bob Distassio  
Larry DiStefano  
"Doc", Tom, Stacey and Jason  
Ed Donahue  
Allie, Rodney, Courtney DuBose  
and Ebony Williams  
Rick Ferris '91  
Debbie Fisk and Kathy DeMino  
Linda and Donald Fucci  
Tony and June Gallucci  
Albert Jablonckas and Linda Szabo  
The London Family  
Henri Melchiona, Jr.  
K.M.R. Fitness Center, Inc.  
Vic Meneghini and Family  
Teddi Miller  
Ron Mitola

New Canaan Pizza  
Norwalk Mariners  
Nutmeg Bowl  
Alan Palmer  
Dena Porto  
R-Place  
Donna and John Roethel  
Sacred Heart University  
Chemistry Department  
Sacred Heart Counseling Center  
Sacred Heart University Security  
St. Joseph's CYO, Henry Melchiona,  
Joe Sergi and Vic Meneghini  
Schaeffer Sporting Goods  
Chuck Seibold  
Fred Seyfert  
Ken and Ida Smith  
Ralph W. Smith, Jr.  
"Spectrum" Newspaper  
Sports Page  
Vi Sam Scranton  
Student Affiliate Chapter of the  
American Chemical Society  
Mike Symanski Landscaping  
Tartaglia's Restaurant  
Sue Teoli  
Mr. and Mrs. Walter Wallace  
WESCO Industries,  
John Seibold, President  
Diane Zalewski  
Frank and Irene Zalewski

Special Thanks to  
Leonard and Dorothy Palmer

# Pioneer All-America Selections



**Carol Ball**  
Pitcher  
1st Team 1982, '83



**Pat Suchower**  
Utility  
2nd Team 1983



**Debbie Tidy**  
Pitcher  
1st Team 1984, '85, '86, '87



**Gail Holznagel**  
Pitcher  
2nd Team 1985



**Bippy Luckie**  
Shortstop  
1st Team 1985  
2nd Team 1984



**Kim Schmidt**  
Catcher  
1st Team 1987



**Maryanne Piorek**  
Third Base  
1st Team 1987  
2nd Team 1988



**Vicki Kennedy**  
Outfield  
2nd Team 1987



**Pauline Madrid**  
Pitcher  
2nd Team 1988, '90



**Pam Wallace**  
First Base  
1st Team 1990



**Michelle Palmer**  
Outfield  
2nd Team 1990, '91

## **In Memoriam**



**Pete DiOrto**  
**1936-1992**

# Lady Pioneer Honor Roll

## ALL-AMERICA

- 1982 Carol Ball (P)
- 1983 Carol Ball (P)  
Pat Suchower (Util.), 2nd team
- 1984 Debbie Tidy (P)  
Elizabeth "Bippy" Luckie (SS), 2nd team
- 1985 Debbie Tidy (P)  
Elizabeth "Bippy" Luckie (SS)  
Gail Holznagel (P), 2nd team
- 1986 Debbie Tidy (P)
- 1987 Maryanne Piorek (3B)  
Kim Schmidt (C)  
Debbie Tidy (P)  
Vicki Kennedy (OF), 2nd team
- 1988 Pauline Madrid (P), 2nd team  
Maryanne Piorek (3B), 2nd team
- 1990 Pam Wallace (1B)  
Pauline Madrid (P), 2nd team  
Michelle Palmer (OF), 2nd team
- 1991 Michelle Palmer (OF), 2nd team

## ALL-NEW ENGLAND

- 1980 Carol Ball (P)  
MaryHelen McCarthy (OF)  
Pat Suchower (SS)
- 1981 Carol Ball (P)  
Sue Bellis (2B)  
MaryHelen McCarthy (OF)  
Pat Suchower (1B)  
Teal Whitaker (OF)
- 1982 Carol Ball (P)  
Donna DiMuzio (C)  
MaryHelen McCarthy (OF)  
Maria Morris (P)  
Pat Suchower (1B)
- 1983 Carol Ball (P)  
Debbie Fisk (OF)  
Elizabeth "Bippy" Luckie (SS)  
Pat Suchower (C)
- 1984 Elizabeth "Bippy" Luckie (SS)  
Debbie Tidy (P)  
Diane Zalewski (C)  
Tracy Gelsinger (OF)
- 1985 Gail Holznagel (P)  
Elizabeth "Bippy" Luckie (SS)  
Kim Schmidt (OF)  
Debbie Tidy (P)
- 1986 Tracy Brown (3B)  
Sue Teoli (SS)  
Debbie Tidy (P)
- 1987 Maryanne Piorek (3B)  
Kim Schmidt (C)  
Debbie Tidy (P)

## ALL-NORTHEAST (Formerly All-New England)

- 1986 Sue Teoli (SS)  
Debbie Tidy (P)
- 1988 Kim DeCarlo (DH, Utility)  
Pauline Madrid (P)  
Maryanne Piorek (3B)
- 1989 Stephanie Manning (OF)
- 1990 Vicki Kennedy (OF)  
Pauline Madrid (P)  
Michelle Palmer (OF)  
Pam Wallace (1B)  
Alecia Stephenson (SS), 2nd team
- 1991 Donna Charchenko (C)  
Renee Melchiona (2B)  
Michelle Palmer (OF)  
April King (1B), 2nd team

## ALL-EAST TEAM

- 1981 Carol Ball (P)  
Pat Suchower (C)

## ALL-NECC

- 1984 Sue Brksa (OF)  
Elizabeth "Bippy" Luckie  
Debbie Tidy (P)  
Diane Zalewski (C)  
Tracy Gelsinger (OF)  
Gail Holznagel (P)  
Elizabeth "Bippy" Luckie (SS)  
Kim Schmidt (OF)  
Nancy Stanton (DH)  
Debbie Tidy (P)
- 1986 Tracy Gelsinger (1B)  
Pam London (2B)  
Debbie Tidy (P)
- 1987 Vicki Kennedy (OF)  
Maryanne Piorek (3B)  
Kim Schmidt (C)  
Debbie Tidy (P)  
Trish Tracey (2B)
- 1988 Kim DeCarlo (OF)  
Pauline Madrid (P)  
Maryanne Piorek (3B)  
Stacey Squires (2B)  
Vicki Kennedy (OF), 2nd team  
Alecia Stephenson (SS), 2nd team
- 1989 Alecia Stephenson (SS)  
Trish Tracey (C)  
Pam Wallace (1B)
- 1990 Donna Charchenko (C)  
Tisha Johnson (2B)  
Vicki Kennedy (OF)  
Pauline Madrid (P)  
Michelle Palmer (OF)  
Alecia Stephenson (SS)  
Pam Wallace (1B)  
Vicki Kennedy (P), 2nd team  
Diane Nicholls (3B), 2nd team
- 1991 Donna Charchenko (C)  
April Ertl (P)  
April King (1B)  
Renee Melchiona (2B)  
Michelle Palmer (OF)  
Becky Van Ort (SS)  
Maria Cavaliere (3B), 2nd team  
Nicole DuBack (DH), 2nd team

## NECC PLAYER OF THE YEAR

- 1985 Elizabeth "Bippy" Luckie
- 1988 Pauline Madrid
- 1990 Vicki Kennedy
- 1991 Michelle Palmer

## NECC ROOKIE OF THE YEAR

- 1988 Stacey Squires
- 1990 Michelle Palmer
- 1991 Keri O'Donnell

## NECC PITCHER OF THE YEAR

- 1990 Pauline Madrid

## NECC COACH OF THE YEAR

- 1990 Elizabeth "Bippy" Luckie
- 1991 Elizabeth "Bippy" Luckie

## NCAA ALL-TOURNAMENT TEAM

- 1982 Carol Ball  
Pam Lawry  
Maria Morris
- 1984 Tracy Gelsinger  
Debbie Tidy
- 1987 Kim Schmidt
- 1988 Vicki Kennedy (OF)  
Pauline Madrid (P)  
Trish Tracey (C)
- 1990 Michelle Palmer (OF)  
Alecia Stephenson (SS)
- 1991 Michelle Palmer (OF)

***Good Luck***

# **LADY PIONEERS**

**Let's Keep That  
Winning Tradition  
Alive in '92**

**The  
Student Government  
of  
1991-92**



1992 SACRED HEART UNIVERSITY SOFTBALL TEAM: Front row, from left: Renee Melchiona, Lisa DiFulvio, Shari Wright, Amy Romanas, Maria Cavalliere, Elaine Agosti, Michelle Scacciaterro. Standing: Head Coach Elizabeth Luckie, Asst. Coach Lynn Rocheleau, Captain Michelle Palmer, Nicole DuBack, Player/Manager Lori Bogue, Keri O'Donnell, Becky Van Ort, April Ertl, Asst. Coach Pam London, Trainer Helene Dakin.

# 1992

## SACRED HEART UNIVERSITY

### WOMEN'S SOFTBALL

MARCH	OPPONENT	SITE	TIME
	<b>Southern Trip</b>		
Sun. 8	Barry	Ocoee, FL	10:45 am
Sun. 8	Shippensburg	Ocoee, FL	2:15 pm
Mon. 9	Univ. of Missouri (Rolla)	Ocoee, FL	9:45 am
Mon. 9	Indiana (Pa.)	Ocoee, FL	3:00 pm
Wed. 11	Lake Superior State	Ocoee, FL	3:00 pm
Wed. 11	California (Pa.)	Ocoee, FL	6:30 pm
Thu. 12	Grand Valley State	Ocoee, FL	9:45 am
Thu. 12	Bloomsburg	Ocoee, FL	1:15 pm
Sat. 14	Florida Southern	Ocoee, FL	1:15 pm
Sat. 14	Lock Haven	Ocoee, FL	3:00 pm
Sun. 15	Wayne State	Ocoee, FL	9:45 am
Sun. 15	Chapman	Ocoee, FL	11:30 am

#### Northern Schedule

Wed. 18	QUINNIPIAC (2)	HOME	2:00 pm
Sat. 21	Assumption (2)	Worcester, MA	1:00 pm
Wed. 25	American International (2)	Springfield, MA	2:00 pm
Sat. 28	Queens (2)	Flushing, NY	1:00 pm
Sun. 29	EAST STROUDSBURG (2)	HOME	12:00 pm

#### APRIL

Thu. 2	C.W. POST (2)	HOME	3:00 pm
Sat. 4	* Franklin Pierce (2)	Rindge, NH	11:30 am
Tue. 7	* New Haven (2)	West Haven	3:00 pm
Sat. 11	* NEW HAMPSHIRE COLLEGE (2)	HOME	1:00 pm
Sun. 12	* UMASS-LOWELL (2)	HOME	1:00 pm
Wed. 15	* BRIDGEPORT (2)	HOME	2:00 pm
Fri. 17	Merrimack (2)	N. Andover, MA	1:00 pm
Tue. 21	* Southern Connecticut (2)	New Haven	3:00 pm
Thu. 23	SPRINGFIELD (2)	HOME	3:00 pm
Sat. 25	* Keene State (2)	Keene, NH	1:00 pm
Mon. 27	Bentley (2)	Waltham, MA	3:00 pm

\* New England Collegiate  
Conference games.

Home games at Jewish Community  
Center Field, Bridgeport.

