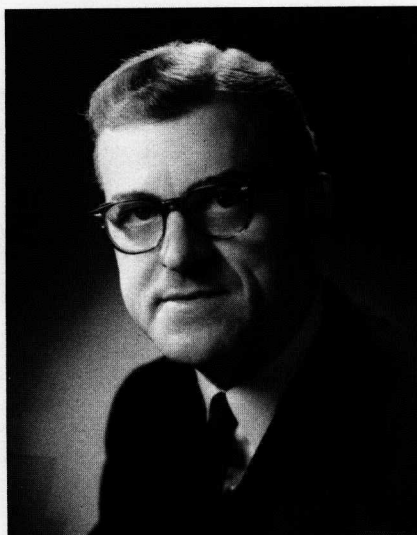


**DEDICATION
OF THE
SACRED HEART UNIVERSITY
LIBRARY**

September 28, 1968

A STATEMENT FROM THE PRESIDENT



DR. WILLIAM H. CONLEY
President,
Sacred Heart University

The completion of the new library marks the first major physical addition to the campus of SHU since it began five years ago. The new structure will enable the University to continue the amazing development of library collections which have already multiplied to more than 50,000 volumes during the very brief period of the University's existence. The capacity of the library makes possible an eventual holdings of 180,000 volumes plus microprint recordings, and documents.

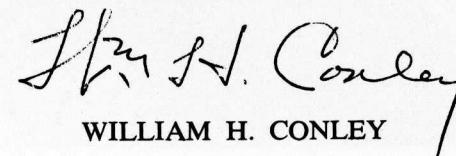
Sacred Heart University was conceived in the innovative spirit of Vatican II and patterned upon a unique system of lay controlled education which has since spread to more traditionally oriented Catholic colleges and universities. The University is committed to

the traditional philosophy of Christian liberal education and, as the only coeducational institution of its kind administered and staffed exclusively by laymen, it has grown tenfold in just a few short years of operation.

The University is designed to serve both the commuting student and the general community regardless of religious affiliation. Its library will be one of the major instruments of such service and all interested are cordially invited to familiarize themselves with the various advantages which it will render to residents of Southwestern Connecticut.

As a private, non-tax supported institution which is currently meeting operating expenses from normal tuition income and auxiliary services, the University's commuting nature automatically eliminates the usual boarding expenses involved in residence campus situations. Through its four-year Bachelor Degree and two-year Associate Degree programs, Sacred Heart offers extensive and continuing opportunity for students planning business, industrial and educational careers. It strives to foster a Catholic value oriented atmosphere conducive to the development of a stable character and a sense of personal moral responsibility among students.

Further plans will call for the creation of a new Student Center and a program designed to help increase advanced opportunities for quality instruction in several subject areas. We hope that you share with us the excitement and enthusiasm of these Library Dedication ceremonies and that you will continue to participate in the activities of Sacred Heart University as it continues to develop new facilities for effective community service in the years ahead.


WILLIAM H. CONLEY



SACRED HEART UNIVERSITY LIBRARY

The three-story Sacred Heart University Library has been built as a vital part of the University's long-range plans. The site placement of the library adjacent to the main classroom building flanked by the administration building, faculty offices, and the student parking area offers a pleasant setting and convenient location for maximum student use of the facility. The lower floor level has been designed to blend with the grades at the existing parking area in order to facilitate ingress and egress by handicapped students, faculty and visitors across the landscaped concrete terrace to the elevator lobby.

The basic structure has been executed with a structural steel skeleton frame with cast-in-place reinforced concrete floor construction, reinforced concrete slab on grade, galvanized steel roof deck with rigid insulation and twenty-year bonded built-up tar and gravel roofing.

The facade of the building expresses the design concept of cantilevered channel-shaped sun shields which also create carrel study alcoves within the building. The setbacks and indentations combine to form the contemporary classic appearance of simplicity and severity punctuated by the dramatic Italian Verde Saint Denis marble veneered column pilasters while minimizing the possibility of introducing undesirable glare and solar heat into the air conditioned building. Exterior wall surfaces are finished with rock-faced random ashlar pattern Alabama limestone. An original design bas-relief cast bronze sculpture symbolic of the educational enlightenment of the library has been executed by Cathedral Studios of Hartford. The nine-foot by ten-foot sculpture is approximately one foot in relief and is mounted with cantilever mountings projecting it four inches away from the wall surface.

Glazing throughout the building is bronzetone insulating glare reducing glass installed in bronze anodized aluminum windows, doors and frames. Bronze anodized aluminum fascias and gravel stops at all roof edges and overhangs complement the glazing and metal frames.

The main entrance to the library located at the main floor level faces the Student Pedestrian Mall and gardens at the southeast side of the building and is approached by a low flight of broad steps under a spacious cantilevered canopy. Floor to ceiling bronzetone insulating glass walls set in bronze anodized aluminum frames enclose the terrazzo finished entrance foyer and stairways to the lower level creating an open, inviting atmosphere while entering the building and offering a panoramic view of the Student Pedestrian Mall and landscaping while departing. Carefully designed planter areas with nursery stock plantings are provided at the exterior and interior of the building, at wells at the retaining wall alcoves and at the base at the marble veneered pilasters adjacent to the porch and terrace seating areas.

Beyond the foyer display area and opposite the main floor control desk a free-standing reinforced concrete stairway with bronze anodized aluminum railings, formica panels and full width carpeted treads and risers ascends to the upper level floor area.

The interior design at the main and upper floor levels of the library has been predicated on the concept of maintaining large unobstructed flexible areas through the limited use of walls and columns. Subdivisions of the large spaces has been accomplished by the use of study carrel alcoves along the periphery of the area, study table areas, stack groupings, informal lounge areas with

upholstered seating, custom designed lighting and variations in the heights of ceiling areas. Design, decor and traffic flow have been functionally planned to insure unobstructed transition to adjoining rooms and areas. All details of the interior design including furnishings have been executed by the architect in close cooperation with the owner to insure unity and coordination throughout.

The predetermined placement and use of windows has created an interior atmosphere with muted indirectly reflected natural daylight and offers exciting viewing experiences of the planters, pilasters and campus. The interior marble veneered column pilasters reflect their exterior counterparts and afford a strong contrast to the exposed lightweight concrete masonry walls and special design stack-bond fluted masonry alcove surfaces.

The interior planning has assured a close relationship between the book stacks and the study spaces at the large reading and study area at the lower level, the carrel study areas and casual lounge areas at the main and upper levels. Traffic flow and movement is smooth and logical with the student having convenient access to collections, reference and periodical materials.

The librarian's office waiting room, order department and processing room are located at the main floor area beyond the control desk and card catalogue area. A separate Science-Mathematics library room is provided adjacent to the reference and stack area.

The upper floor level includes a group study area, conference room, audio-visual area with recording and listening tables, art reference room and instructional materials center adjacent to the large open stack and study carrel area. A pleasant lounge seating area with upholstered seating has been provided adjacent to the

main stairway and the large window area overlooking the Student Pedestrial Mall and gardens.

Surrounding the large study area at the lower level are a 250-seat Lecture Room with stage and special lecture room tablet arm seating, a group study area, charging desk with reserve book stack area, microfilm reader area, storage stacks, receiving area, staff suite and utility areas.

Each reference area has been provided with acoustically treated private typing rooms with large laminated plastic finished counter areas. Heavy duty commercial carpeting has been provided at all public, stack, reference and office areas except at the mosaic terrazzo floor areas at the main entrance vestibule, foyer and stairhalls.

Wood paneling, laminated plastic panels, wood trim and wood furniture at the main and upper floor areas are executed in royal American walnut. The lower level wood finish is blonde American birch at all areas. Walls of the lecture room are custom-designed with splayed panel surfaces of alternating finishes or perforated birch plywood and bronze anodized aluminum grilles installed over mineral sound absorbing insulation material. The sloped floor at the lecture room affords improved sight lines to the stage area from all seats. The stage is provided with a mechanically operated projection screen, lecturn, audio system and stage lighting.

The complementary blend of painted surfaces, woodwork, metal shelving, upholstery and carpet fibers have been color-coordinated to provide a harmoniously balanced environment conducive to study, discourse and teaching.

Val Carlson, Architect, A.I.A.
21 June 1968

Program

DEDICATION OF THE SACRED HEART UNIVERSITY LIBRARY

SATURDAY, SEPTEMBER 28, 1968

AT 11:00 A.M.



PHILIP SCHARPER
SPEAKER

Procession

Invocation

Greetings

Introduction of Guests

Blessing and Dedication
of Building

Introduction of Speaker

Address

Benediction

DR. WILLIAM H. CONLEY
President of Sacred Heart University

MOST REV. WALTER W. CURTIS
*Founder of Sacred Heart University
and Chairman of University Board of Trustees*

DR. CONLEY

PHILIP SCHARPER
Associate Editor, Sheed and Ward

BISHOP CURTIS

Musical Selections by the Sacred Heart University-Community Chamber
Orchestra, under the direction of Leland R. Roberts

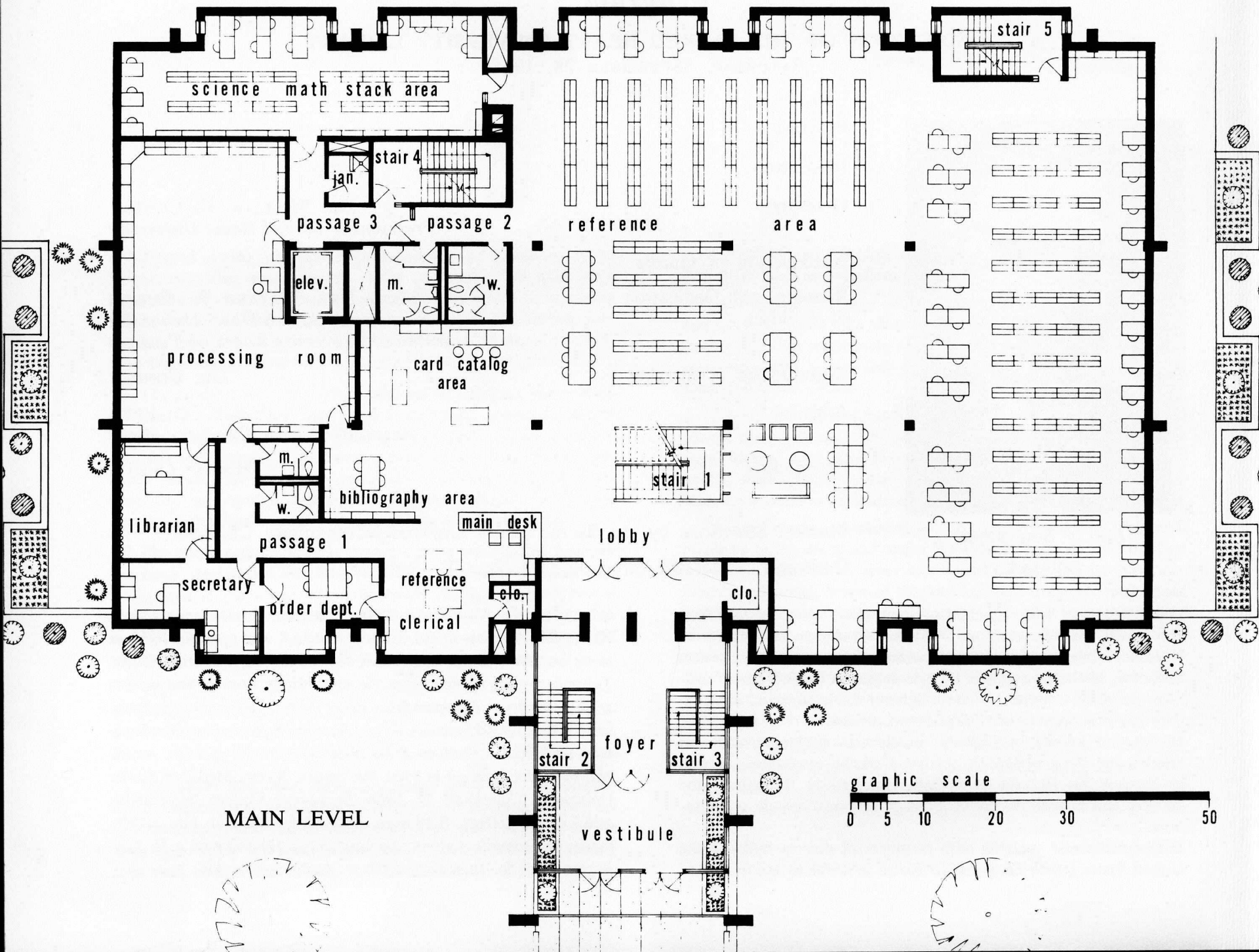
Philip Scharper, editor-in-chief of the publishing house of Sheed and Ward, was formerly an Assistant Professor of English at Fordham University and an Associate Editor of *Commonweal* magazine. He holds a Master of Arts degree in English from Fordham as well as a Master of Arts degree in Education and a Licentiate in Philosophy from Georgetown University.

He is well known in Catholic intellectual circles through his articles and book reviews in leading Catholic magazines, as well as through his lectures at Catholic universities throughout the country and to national conventions of several Catholic organizations.

His experience in working with members of diverse faiths in the United States led to his going to Rome in 1964 to act as a con-

sultant on the Vatican Council committee formulating Schema XIII, "The Church in the Modern World," and again in 1967 to serve on the Vatican Secretariat for Promoting Christian Unity. These occasions afforded him the opportunity to meet and discuss with hierarchy and laymen from many parts of the world the problems which the Universal Church faces in implementing the directives set forth in the various conciliar decrees.

Mr. Scharper received in 1961 the Francis Xavier Medal of Xavier University, Cincinnati. In 1966, St. Mary's College, Milwaukee, and Loyola College, Baltimore, each conferred upon him a Doctorate of Humane Letters, *honoris causa*. He received a D. Litt. degree from St. Benedict's College, Atchison, Kansas.



MAIN LEVEL DESCRIPTION

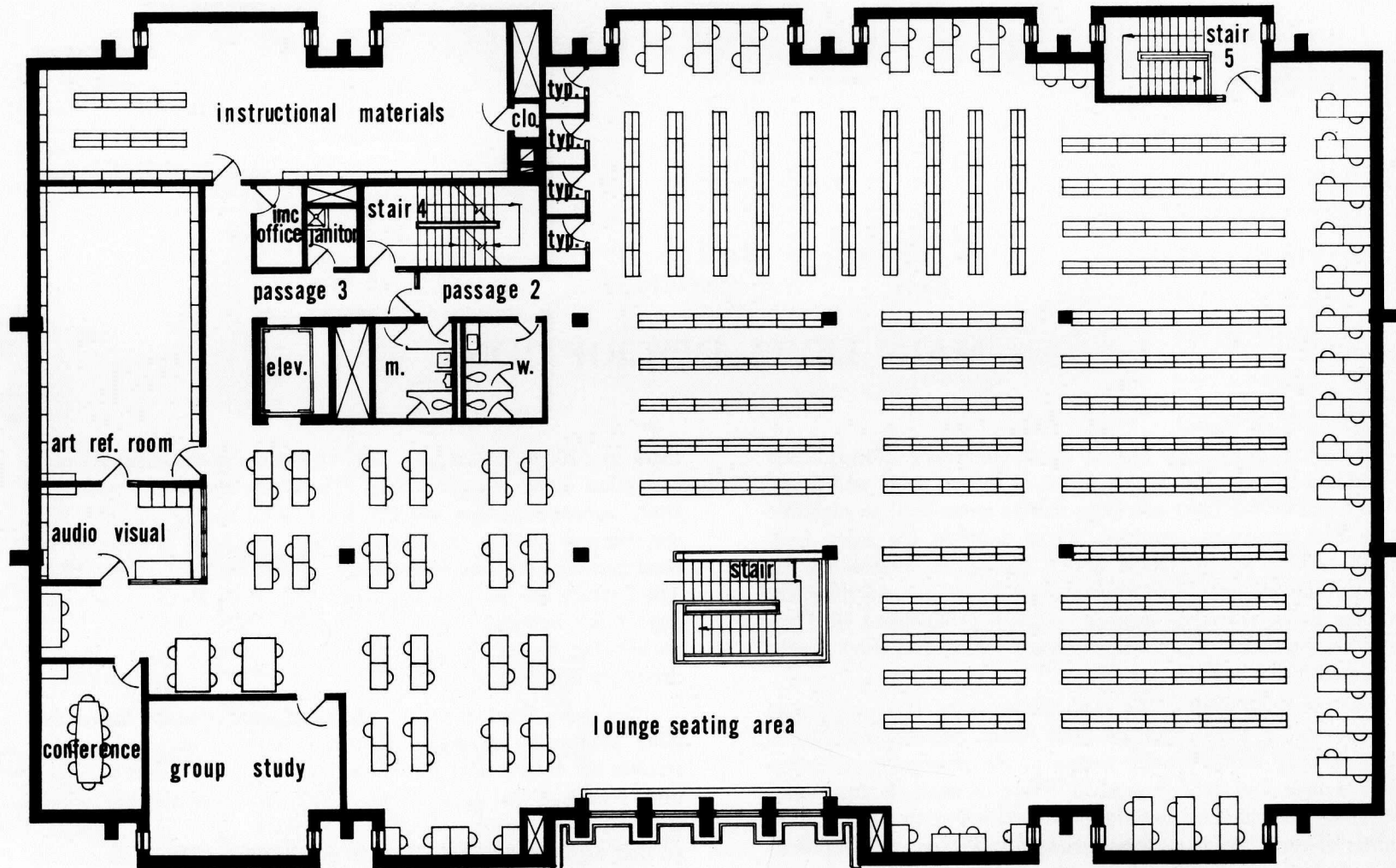
All visitors to the new Sacred Heart University Library enter the building through the double doors of the vestibule and foyer. On each side of the foyer are large exhibit cases used to highlight library and university activities. Upon entering the main level through another set of double doors, the visitor approaches the main desk on his left. Here books are charged out and returned; here also is the reference desk at which a professional librarian awaits his questions. The various library offices and work rooms are located in this area.

Near the main desk is the card catalog area. Here are found the main catalog, the Cumulated Book Index, and the other works of bibliography which provide access to the circulating collection and to written literature in general. Close at hand, in the center of this floor, are the reference stacks which hold up to five thousand volumes of encyclopedias, dictionaries, biographical, geographical, and historical handbooks and other works of reference. The Library owns major encyclopedias in English, French, Spanish, Italian and German as well as dictionaries in these and many other languages. An extensive collection of atlases is shelved here in special atlas cases. There is seating for thirty-six users at tables adjacent to the reference collection.

A separate room has been provided for the books in the fields of science, mathematics, and business, the 500's and 600's of the Dewey Decimal Classification. The remainder of the Main Level consists of shelving for books of a general nature (000's),

theology (100's), philosophy (200's) and the social sciences except education (300's except 370's). There are about 100 additional study accommodations on this level close to the shelves. Near the stairway leading to the upper level (STAIR 1) shelving has been provided for free interchange of paperbacks and magazines. The Library has provided a starter collection. Readers may take any of this material home with them and need not return it. We do ask that for every book or magazine taken, a similar item be deposited on these shelves.

The main level gives the visitor a good idea of the underlying philosophy of design in the building. Whenever possible, readers are seated near the books they need. The alert user of a library finds it helpful not only to take books home, but also to study near the subject collection of books in which he is interested so that as he studies he is able to go to the stacks and find background information readily available, both in reference books and circulating volumes. Another design feature makes it possible to keep the lower level open after the remainder of the building is closed so that students will be able to find a place to study late at night and on weekends. And finally, since Sacred Heart University is oriented towards the commuting student, the building is designed to permit rapid access for large numbers of students who need a place to study their own textbooks during a free hour. Consequently, a variety of reader accommodations is provided, in quantity, for every user need.



UPPER LEVEL

UPPER LEVEL DESCRIPTION

The Upper Level of the Sacred Heart University Library has a number of features of special interest. On this level are housed the bulk of the circulating volumes, books in language and literature, fine arts, history and geography, biography and fiction. The education collection is also located on this level close to the Instructional Materials Center, a separate room housing text and related materials for students enrolled in the education programs. This room also contains audio-visual equipment and materials and is used as a viewing and study center for education students.

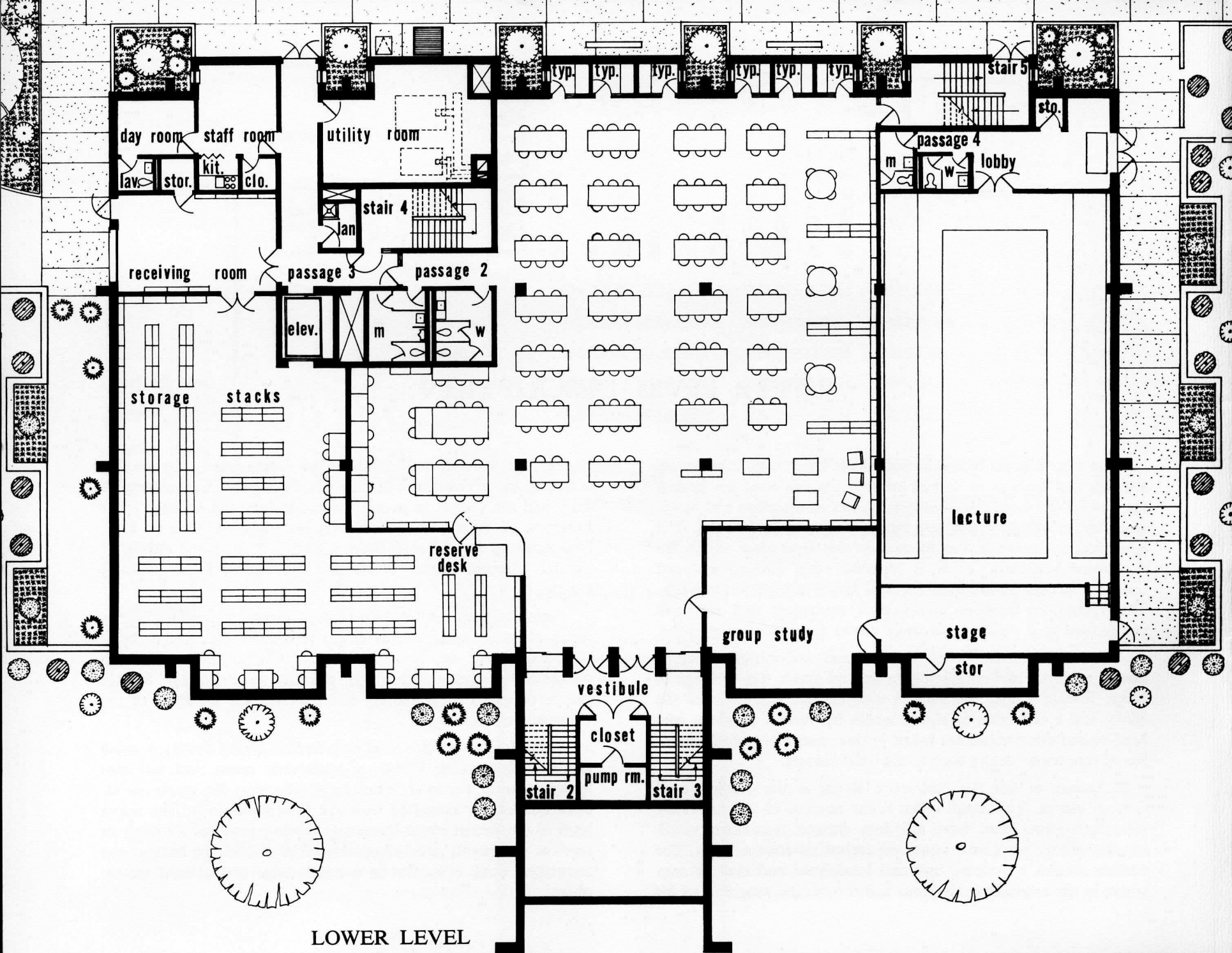
The Art Reference Room houses special collections as well as books, reference and circulating, in art and music. The writings of Msgr. Ronald Knox, the English essayist and translator of the Bible, and a collection of signed works by various speakers who have visited this campus are found in this room along with a number of rare books dating back to the 16th century.

Adjacent to the Art Reference Room is the Audio-Visual Control Room. This small office is the nucleus of an innovative listening system. First, there is a four channel transmitter which simulcasts four programs, taped, on record, or from a radio. The student obtains a listening unit and headphone and may sit anywhere in the adjacent study areas and turn to the programs of his

choice. The listening units are wireless; consequently the student is free to move about at will. Scheduled programs are announced daily and are geared to match the curriculum and to offer other programs of interest. A sample program might be: Channel One, Shakespeare's *Romeo and Juliet*; Channel Two, taped History 1 lecture; Channel Three, World Series; Channel Four, classical music.

Secondly, there are five individual turntables at listening carrels which allow students to hear stereo records of their choice from the collection of records owned by the library. The combination of these two installations will provide an extremely flexible system of audio programming and selection for members of the University community.

Other features of this level include four typing booths, a small group study-working lounge, a conference room, and an open lounge next to the large windows overlooking the newly developed quadrangle extending from the library entrance. The upper level of the Sacred Heart University Library provides a variety of services and reader accommodations, and houses the bulk of the circulating book collection in a comfortable and relaxed atmosphere.



LOWER LEVEL

LOWER LEVEL DESCRIPTION

The Lower Level of the Library is entered via the exterior stairs in the foyer of the entranceway. Most of this level is devoted to a large study hall used by students who wish to study their textbooks or the materials housed on this floor. Over seven hundred current periodicals are shelved in the alcoves along the side of the study hall. The bound volumes and extensive runs of microfilm of these and other periodicals are housed behind the desk near the entrance. Here also are the books and articles placed on reserve.

A number of microfilm and microfiche readers are readily available for reader use as well as a photocopy machine. The extensive library collection of periodical indexes is nearby so that students may be able to find periodical articles with a minimum of effort. A group-study/smoking lounge is located near the current periodicals for those students who wish to relax at their work and to hold quiet discussions. Six typing booths line the back wall of the study area.

This study area remains open late in the evening and on weekends to give all students the opportunity for study of reserve books, research on papers, and in general a comfortable place to

work away from home. The Library is open almost ninety hours a week during the school term offering ample opportunity for completion of assignments.

Also on the lower level, but with its own entrances, is the Library Lecture Hall. This large room contains 250 seats each equipped with a tablet arm. The room is designed for audio-visual presentations being equipped with a motion picture projector as well as a stereophonic tape and disk sound system. It is easily accessible from either the classroom building or the parking lots.

All three levels of the library are designed so that the user may go from one place to another with a minimum of confusion and effort. There are two interior stairways as well as the separate stairs near the main entrance. All users are to use the main entrance except in case of emergency. There is an elevator available for the non-ambulatory user. The physical layout and the extensive use of carpeting make the library a quiet, comfortable place to study and to relax with lounge areas available on each floor. The contemporary college library maintains the traditionally American open shelving while permitting a wider range of seating, greater use of modern technology, and more extensive staff participation in assisting the student than ever before.

SACRED HEART UNIVERSITY LIBRARY

SUB-CONTRACTORS AND MATERIAL SUPPLIERS

CONTRACTOR:

The Monaco Construction Company
104 Reservoir Avenue
Bridgeport, Connecticut

ELECTRICAL WORK

New England Construction Co.
31 Miles Street
Bridgeport, Connecticut

PLUMBING, HEATING & VENTILATING

Paul S. Yoney, Inc.
679 Lindley Street
Bridgeport, Connecticut

ACOUSTICAL WORK

Thermal Acoustics, Inc.
81 Farwell Street
West Haven, Connecticut

BLACKBOARDS, TACKBOARDS

W. L. Walker Company
21 Wintonbury Avenue
Bloomfield, Connecticut

CARPETING

National Theatre Supply Corporation
356 W. 44th Street
New York, New York

CAULKING

A. Belanger & Son
Contant Avenue
Lodi, New Jersey

CONCRETE BENCHES

Durastone Company, Inc.
P. O. Box 61
Lincoln, Rhode Island

CONCRETE WALKS

Arduini Construction Company
493 Fairview Avenue
Bridgeport, Connecticut

ELEVATOR

General Elevator Company
181-191 Walnut Street
Hartford, Connecticut

FOLDING DOORS

S. Barry Jennings
P. O. Box 618
New Haven, Connecticut

GARAGE DOOR

Overhead Door Company
Boston Post Road
Orange, Connecticut

GLASS & GLAZING

Main Glass Company
2055 Boston Avenue
Bridgeport, Connecticut

HARDWARE

The Hawley Hardware Company
1020 Fairfield Avenue
Bridgeport, Connecticut

HOLLOW METAL WORK

County Firedoor Corporation
1190 Longwood Avenue
Bronx, New York, 10474

INCINERATOR

American Incinerator Company
310 Connecticut Avenue
Norwalk, Connecticut

LIMESTONE VENEER

Bergen Bluestone Company, Inc.
404 Rout 17
Paramus, New Jersey, 07652

MILLWORK

Peerless Woodworking
32 Roaring Brook Plaza
East Glastonbury, Connecticut

MISCELLANEOUS METALS

Manis Metals, Inc.
61-71 Federal Street
Bridgeport, Connecticut 06606

PAINTING

David MacKenzie, Inc.
391 Lincoln Avenue
Bridgeport, Connecticut

PAVING

Leverly & Hurley Company
260 Bostwick Avenue
Bridgeport, Connecticut

PILING

Bradley & Upson, Inc.
301 East Main Street
Branford, Connecticut

ROOFING * SHEET METAL

Barrett Roofing & Supply Company
729 Union Avenue
Bridgeport, Connecticut

SEATING

American Seating Company
101 Grand Avenue
Palisades Park, New Jersey, 07650

TILE & MARBLE & TERRAZZO

Benny Tile Company
128 Alice Street
Bridgeport, Connecticut

STRUCTURAL STEEL & IRON

New England Iron Works
1351 Dixwell Avenue
New Haven, Connecticut

TOILET PARTITIONS

American Cyanamid Company
c/o Mr. D. Dickinson, Coachman Drive
Branford, Connecticut

WEATHERSTRIPPING

Chamberlain Company of Connecticut
30 Elm Street
West Haven, Connecticut

WINDOWS

Earl R. Smith, Inc.
1318 Kossuth Street
Bridgeport, Connecticut

EXTERIOR ART WORK

Cathedral Studios
111 Airport Avenue
Hartford, Connecticut

EQUIPMENT SUPPLIERS

Bro-Dart, Inc.
Furniture Division
Thomas Avenue
Montgomery, Pennsylvania 17752

County Business Machines, Inc.
3077 Main Street
Bridgeport, Connecticut

Electronics Futures, Inc.
57 Dodge Avenue
North Haven, Connecticut

Estey Corporation
Drawer E
Red Bank, New Jersey

H. B. Educational Systems, Inc.
21 Audio Lane
New Haven, Connecticut

I.B.M. Corporation of America
968 Fairfield Avenue
Bridgeport, Connecticut

Karp's Office Furniture & Supply Co.
95 Atlantic Street
Stamford, Connecticut

The Library House
P. O. Box 948
Groton, Connecticut

The Aram A. Kaz Company
530 Silas Deane Highway
Wethersfield, Connecticut

Gerald A. Nealous Company
1052 New Britain Avenue
Elmwood, Connecticut

Microcard Editions
365 So. Oak Street
West Salem, Wisconsin 54669

Radio-Matic of America, Inc.
760 Ramsey Avenue
Hillside, New Jersey, 07209

Theatre Sound, Inc.
Amity Road
Bethany, Connecticut 06525

University Microfilms, Inc.
Ann Arbor, Michigan

