

# EDGERTON CENTER

## FOR THE PERFORMING ARTS



SACRED HEART UNIVERSITY

# 2006/2007 season

Outreach Families Alumni Faith Children Community Service Students



[www.EdgertonCenter.org](http://www.EdgertonCenter.org)

Outreach  
Families  
Alumni  
Faith  
Children  
Community  
Service  
Students  
Outreach  
Families  
Alumni  
Faith  
Children  
Community  
Service  
Students  
Outreach  
Families  
Alumni  
Faith  
Children  
Community  
Service  
Students  
Outreach  
Families  
Alumni  
Faith  
Children  
Community

# In residence



**CONNECTICUT FAMILY THEATRE** is a professional equity theatre company for families and children that has performed for over one million children from Washington D.C. to Boston. CFT's producers are Grammy®-nominated for "Best Spoken Word for Children," and have worked with some amazing artists, including **Bea Arthur, Marla Gibbs, John Lithgow, Marcel Marceau, Zelda Rubinstein, Lorenzo Lamas, Peter Walker, Bernice Kopel, Jasmine Guy, Janet Carroll** and **Max Showalter**. Now, CFT will create and produce professional shows and theatre arts workshops for area families, schools and children on the stage of The Edgerton Center.

*The ONLY year-round, professional theatre in the State dedicated solely to children and families!*

OCTOBER

## The Velveteen Rabbit



*A new musical based on the classic story by Margery Williams.*

"100 BEST BOOKS FOR CHILDREN." - AMERICAN LIBRARY ASSOCIATION

Best Enjoyed by Pre-K through 3rd grades

**October 24, 2006 – November 4, 2006**

It's the classic story of unconditional love and friendship! Closely following Margery Williams' beloved story, this wonderful musical version is full of interactivity and special moments. It includes pop/contemporary musical numbers, sing-a-longs and audience participation! This production also includes the cameo voice appearances of stage, TV and film stars **Bea Arthur** as the Magic Fairy and **Marla Gibbs** as the Wind Up Doll.



Bea Arthur



Marla Gibbs

*Matinees available on all family shows for school field trips!*

*Call us for exact dates and times of school matinees. Teacher Hotline: 1-800-887-6639*

ies family series family

## DECEMBER

By Barbara Robinson

"ONE OF THE BEST CHRISTMAS BOOKS EVER."

- PUBLISHERS WEEKLY

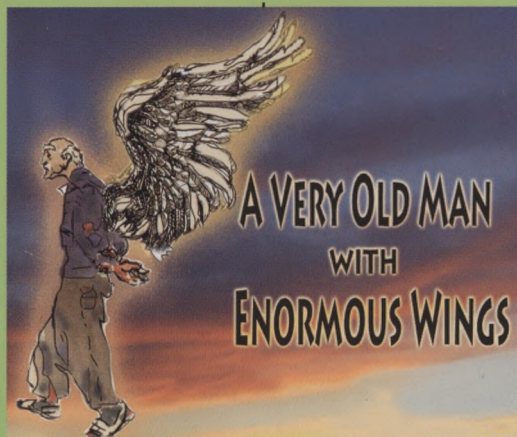
Best Enjoyed by Pre-K through 6th grades

December 7, 2006 – December 23, 2006

They lie, they steal, they smoke cigars... "the Herdmans are the worst kids in the whole history of the world." Every kid in town knows to stay clear of the mischievous siblings, but this year the Herdmans are determined to take part in the annual Christmas pageant. The church has never seen the pageant quite like this! Based on the popular book, *The Best Christmas Pageant Ever* shows us that compassion and generosity sometimes come from the most unexpected sources, especially when the Herdmans are concerned.



## MARCH



Adapted by Pulitzer Prize winner Nilo Cruz from a short story by Nobel Prize winner Gabriel García Márquez.

"A LATIN AMERICAN LITERARY PHENOMENON."

- ENCYCLOPEDIA OF LITERATURE

Best Enjoyed by 6th Grade through College Ages

March 9, 2007 – March 18, 2007

What do angels look like? Fefe and Momo believe they know when they discover a winged old man who appears to have fallen out of the sky. Angel or not, the two children understand and protect the very old man against the exploitation of a town. Fun and fantastical, this is a tale of superstition, survival and the nature of miracles.

HOME OF GREAT FAMILY ENTERTAINMENT

series

family series

fami



MAY



Based on the story by E.B. White  
Adapted by Joseph Robinette  
Music and Lyrics by Charles Strouse

"A NEWBURY HONOR WINNER" - AMERICAN LIBRARY ASSOCIATION

Best Enjoyed by Pre-K through 5th grades

May 9, 2007 – May 26, 2007



Get caught in *Charlotte's Web*, the heartwarming tale that has delighted generations of readers. Charlotte, the spider, launches a barnyard campaign to save the loveable pig, Wilber, from a destiny of becoming bacon!



Audience members sit on the stage  
for an exciting experience.  
LIMITED TO 125 TICKETS SOLD!  
Call Now!

2006 • October 28,  
November 18, December 23

2007 • February 17, April 21,  
May 19, June 9

Each performance a new show! Follow your favorite characters. Come to all 7 shows!

SEVEN SATURDAYS...  
SEVEN DIFFERENT  
SHOWS!

"THE BEST LIVE PROFESSIONAL SHOW FOR  
CHILDREN IN THE STATE." - PICTORIAL GAZETTE

*Patty's Place* is the critically acclaimed live musical show for young children, which promotes artistic creativity and exemplifies that it is our differences that make us special. Hosted by internationally lauded performer and singer **Patty Carver** and Connecticut's own **John Banker** and **Al LaPorte**, the show features local artistic guests with a cast of warm and crazy town characters. The perfect way to introduce the excitement of visual and performing arts to young children.

family series

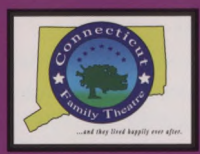
family series

HOME OF GREAT FAMILY ENTERTAINMENT





## Connecticut Family Theatre



### THEATRE CAMP JR.

*K - 3rd grades*

**July 31 – August 11, 2006**

6 classes per session, M/W/F.

Classes are 1 hour, 15 minutes long. A maximum of 12 children per class.

Tuition: \$250 per 6-class session

### TV AUDITIONING CLASS

*Grades 7-12*

**July 17-28, 2006**

M/W/F evenings each week.

Tuition: \$250

A maximum of 12 students per class



## Maureen Hamill's 13th Annual Summer Cabaret Workshop

A music and dance workshop for children between the ages of 7 and 17.

**Session 1: July 10-July 21**

**Session 2: July 24-August 4**

**Session 3: August 7-August 18**

For more information: [www.maureenhamill.com](http://www.maureenhamill.com)

*SUBSCRIBERS RECEIVE A 10% DISCOUNT ON ALL CLASSES.*

To enroll, call the Box Office: 203-371-7908.



## Music Theatre of Connecticut

Music Theatre of Connecticut, currently in its 20th season, provides quality professional performing arts education that focuses on the joy of accomplishment, increased self-esteem, personal expression and growth through training and performances. The only conservatory of its kind in Connecticut, MTC is a Certified Member of the National Guild of Community Schools of the Arts.

### FALL CLASSES

*Classes begin the week of September 11, 2006 and run through the week of December 4.*

*Classes will be run by Music Theatre of Connecticut.*

Tuition: \$400/term

**Acting 1** (Grades 1 & 2) Tuesdays 4-5pm

**Acting 2** (Grades 3 & 4) Tuesdays 5-6pm

**Musical Theatre 1** (Grades 1 & 2)

Thursdays 4-5pm

**Musical Theatre 2** (Grades 3 & 4)

Thursdays 5-6pm

### WINTER/SPRING CLASSES

**Spring Production: THE WIZARD OF OZ**

January through April 2007

The classic musical lights up the ECPA stage this spring with a professionally directed, fully-staged, fully-costumed MTC Student production for children grades 1-4! Auditions will be held in early January, with rehearsals beginning Friday, January 21, 2006 and two public performances in April 2007! Tuition: \$600

For more information please contact [www.musictheatreofct.com](http://www.musictheatreofct.com)



July 6-9, 2006

## The 2nd Annual International Ten String Guitar Festival

The International Festival for players interested in multi-string guitar! Performers and teachers from France, Italy, South America, United States. Four days of workshops and concerts!! For registration and schedule [www.tenstringuitar.com](http://www.tenstringuitar.com).

July 8, 2006, 8pm; July 9, 2006, 3pm

### 10-String Guitar Festival Concerts

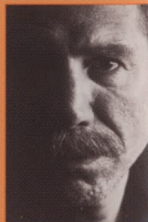
Tickets: \$25 General Public, \$20 Faculty/Staff/Alumni/Seniors, \$15 Group



October 22, 2006, 3pm

### Lew Anderson Big Band and jazz vocalist Giacomo Gates

Straight from its home at Birdland in NYC, the Lew Anderson Big Band will be joined by renowned Jazz vocalist Giacomo Gates for one performance only.



*Giacomo Gates*

JAZZ SERIES



*Paquito D'Rivera*



*Tony Purrone*

March 11, 2007, 3pm

### Paquito D'Rivera with the Tony Purrone Trio

Eight-time Grammy® winner, saxophonist Paquito D'Rivera welcomes Tony Purrone, one of the most accomplished improvisational guitarists of his time, and his trio of world-class musicians.

May 20, 2007, 3pm

### Trio da Paz

The critically acclaimed and multifaceted Trio da Paz features three of Brazil's most in-demand musicians playing the infectious spirit of jazz-oriented Brazilian Music.



*Trio da Paz*

Tickets for all Jazz Series concerts:

*Single Tickets:* \$25 General Public, \$20 Faculty/Staff/Alumni/Seniors/Student

*Jazz Series (all 3 shows):* \$60 General Public, \$50 Faculty/Staff/Alumni/Seniors/Student



LECTURES\*

\* PLEASE NOTE:

- All tickets available to SHU Students FIRST.
- Two weeks prior to each lecture, remaining available seats are opened to public.
- Prices for each lecture TBD.



**"A View from Washington"**

with Tim Russert

November 13, 2006, 8pm

Exclusively represented by the Washington Speakers Bureau

Tim Russert is the managing editor and moderator of *Meet the Press*, a political analyst for *NBC Nightly News*, the *Today Show* and *The Tim Russert Show*, on CNBC as well as being a contributing anchor for MSNBC.

**"Without You" A Memoir of Love, Loss and the Broadway Musical RENT**

with Anthony Rapp

January 22, 2007, 7pm



**Black History Month Speaker**

Remarks by Robin Roberts

February 8, 2007, 7pm

Ms. Roberts has been the

news anchor for *Good Morning America* since April of 2002. Roberts also serves as an *ABC NEWS* correspondent, covering a wide variety of stories, and appears as a substitute co-anchor.

**"Becoming the Best Version of Yourself"**

with Matthew Kelly

March 21, 2007, 7pm

Millions have been touched by Matthew Kelly's writings and presence on radio and television. This lecture will inspire listeners with an empowering message – "Who you become is infinitely more important than what you do or what you have."



SHU STUDENT SHOWS

**SHU F.O.R.C.E. Dance Ensemble**

October 26, 2006, 10:10pm

November 30, 2006, 10:10pm

April 26, 2007, 10:10pm

April 28, 2007, 7pm

F.O.R.C.E stands for the Fusion Of Rhythm, Creativity and Energy. It performs a range of dances from tap, ballet, point, jazz, hip-hop, funk-jazz, lyrical to expressive dance for on-campus and off-campus venues.

**SHU Players**

The University's on-campus student drama club. The shows are fully produced and directed by SHU students.

November 10-12, 2006

**Death of a Salesman**

By Arthur Miller The classic Pulitzer Prize winning play about salesman Willy Loman and his family. November 10, 11, 8pm; November 12, 3pm

Spring show TBA

March 29 - April 1, 2007

**Sacred Heart University Concert Band**

December 9, 2006, 6pm

**"Christmas Memories"**

Santa Claus, snowmen, Christmas trees and candles. Join us for an evening of favorite musical memories from this joyous time of year. Bring your voice for our Christmas sing-a-long. A perfect way for the child in all of us to start the holiday season!

April 22, 2007, 4pm

**"All Creatures Great and Small"**

Lions, elephants, and swans! An afternoon menagerie of music about our friends from the animal kingdom. Featuring *Camille Saints-Saens Carnival of the Animals*. Kids can explore our instrument petting zoo one hour prior to the performance!

**SHU Choirs**

December 3, 2006, 3pm

**Christmas Concert**

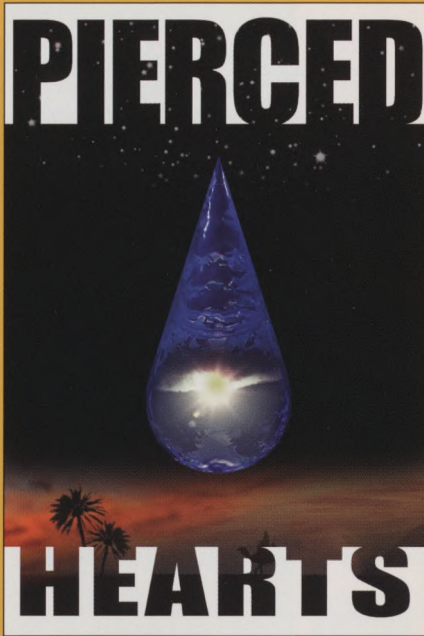
The choir ensemble is designed to survey a wide variety of great choral repertoire. The choir will focus on interesting and exciting music from a number of musical styles and periods.

Spring Concert 2007, Dates TBA





other happenings at the edgerton center



Celebrate Holy Week

*The Easter Story*

## Life. Death. Resurrection.

*Directed by Jerry Goehring*

**April 5, 2007, 7pm**

**April 6, 2007, 7pm**

**April 7, 2007, 2pm**

**Group matinees available April 4, 5 and 6, 2007, 10:30am**

Tickets:

\$20 General Public, \$18 Senior Citizens,

\$15 Faculty/Staff/Alumni, \$12 Groups, \$10 Student

The Edgerton Center for the Performing Arts and Sacred Heart University proudly present an original musical production inspired by the gospel accounts of the passion of Christ. This new musical is a contemporary treatment of the suffering and the death of Jesus of Nazareth during his final days. **Pierced Hearts** is a combination of dramatic storytelling and live music. Powerful, emotional and inspiring. Join together with the community during Holy Week and become part of a new Sacred Heart University tradition.

PREMIERE!





*Best enjoyed  
by all ages!*

## The Tamburitzans

**February 18, 2007, 3pm**

Tickets: \$27 General Public,  
\$25 Senior Citizens/Faculty/  
Staff/Student,  
\$15 Children

A traditional favorite here at the Edgerton Center. This well loved ensemble encapsulates the joys of life and beauty of the many cultures which it artistically represents.



*New Year's Eve!*

## The Dick Campo Big Band

*With heartfelt letters from the boys on  
the front line.*

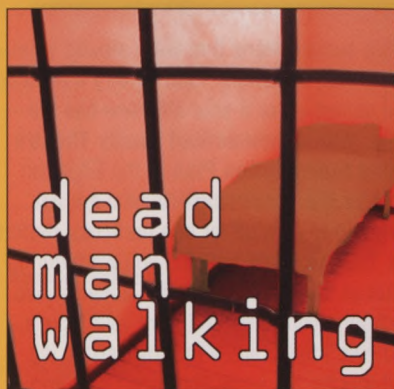
**December 31, 2006, 7pm**

*Hosted by Jerry Goehring*

Tickets: \$25 General Public, \$22 Senior Citizens,  
\$20 Faculty/Staff/Alumni/Student,  
\$15 Children

Swing in the New Year with the classic music of New England's most celebrated big band. The Dick Campo Big Band is New England's "Premier" Orchestra, complete with a guest star vocalist with international credits. Adding to this enchanting evening will be New York actors reading soldier's letters written during the wars to their family and friends at home. **Also available will be a dance floor in front of the stage for those who love to swing!**

**A SHU COMMUNITY  
COLLABORATION**



## Dead Man Walking

*By Tim Robbins, in association  
with the Dead Man Walking  
Theatre Project*

**April 11, 12 and 13, 2007 at  
10:30am for AREA SCHOOLS**

**April 14 at 8pm**

**April 15 at 3pm**

Tickets: \$10 General Public,  
\$5 Senior Citizens/Faculty/  
Staff/Alumni/Student  
\$4 Groups

*Directed by Kevin Connors*

Tim Robbins' *Dead Man Walking* is presented in conjunction with the visit of Sister Helen Prejean, C.S.J., the author of the book who will speak on campus on *Monday, September 25, 2006*. The play revolves around a convicted murderer on death row and the nun who befriends him. While addressing the controversial issue of the death penalty, this moving piece shows both sides of the story and how, in the end, a caring nun must express her compassion for a death row inmate, as well as cope with his outrageous deeds.





**EDGERTON  
CENTER** FOR THE  
PERFORMING ARTS  
SACRED HEART UNIVERSITY



SACRED HEART UNIVERSITY  
5151 PARK AVENUE  
FAIRFIELD, CT 06825-1000

## Subscriber Information

### *Our Flexible Family Subscription Plan*

Flexible subscriptions that work around your family's busy schedule. Don't worry if a soccer game comes up or if your little one has the sniffles. With a **Connecticut Family Theatre Flexible Subscription Plan** at the Edgerton Center for the Performing Arts, you are not committed to sign up for one particular performance. You can come anytime you want during the run of the shows – just call ahead so we can change your date and print your tickets. If you ever miss a show for any reason, we credit you for the seats you didn't use, and you can use that credit to any upcoming performances during that same season, free.

**Huge Savings!** By subscribing you *save 26-33%* off single ticket prices – and you can come to our family shows whenever you want, whenever there is a performance.

**BOX OFFICE / SUBSCRIBER HOTLINE:**  
203-371-7908

**First Notice on Special Events!** As a CFT subscriber, you get advance notice on all special

concerts, theatre arts workshops for children and auditions.

**Other Discounts!** Receive discounted rates on theatre Birthday Parties, tuition to theatre arts workshops for children and other educational activities, and fun merchandise!

## GENERAL INFORMATION

- Senior is 62 and over/Children are 10 and under
- Students/Faculty/Staff MUST have valid ID
- Website for info: [www.EdgertonCenter.org](http://www.EdgertonCenter.org)
- Box Office Hours: **Weekdays 12 noon-4pm 2 hours prior to show**
- Administration Office: **203-371-7909**
- Groups are 10 or more
- Concessions available for patron convenience
- [subscribers@EdgertonCenter.org](mailto:subscribers@EdgertonCenter.org)
- [boxoffice@EdgertonCenter.org](mailto:boxoffice@EdgertonCenter.org)

## HELP SUPPORT THE EDGERTON CENTER WITH A DONATION!

The Edgerton Center for the Performing Arts is committed not only to the Sacred Heart community but also to our neighbors that surround our beautiful campus home here in Fairfield and statewide.

Did you know that ticket sales cover only a fraction of the costs of bringing the arts alive at The Edgerton? Every year the University underwrites the productions, special events, classes and performances that take place in your theater, but for us to increase the quality and number of programs we need you!

We need your help to meet our mission of presenting high quality programming for families, students and the community. Join us in The Charter Member Campaign with a tax deductible\* gift. Your contribution will not only show your confidence and belief in our programming, but also bring you behind the scenes at The Edgerton.

### Benefits include:

- A "Behind the Scenes" tour of the theater for you and your family.
- A "Meet the Stars of the Stage" reception for selected performances.
- The opportunity to purchase VIP House Seats up to 48 hours in advance of the production.

\*To the extent provided by law.

# EDGERTON CENTER 2006/2007 SEASON SUBSCRIBER FORM

Name \_\_\_\_\_

Address \_\_\_\_\_

City \_\_\_\_\_ State \_\_\_\_\_ Zip \_\_\_\_\_

Day Phone (\_\_\_\_) \_\_\_\_\_ Email (required) \_\_\_\_\_

**PAYMENT.** Please check one. CHECK \_\_\_\_\_ / total: \$ \_\_\_\_\_

CREDIT CARD VISA \_\_\_\_\_ • MASTERCARD \_\_\_\_\_ / total: \$ \_\_\_\_\_

Card #: \_\_\_\_\_ Exp. date \_\_\_\_\_

Signature \_\_\_\_\_

**Mail to: Edgerton Center for the Performing Arts, 5151 Park Avenue, Fairfield, CT 06825-1000**

**3-SHOW FAMILY SERIES.**

**Subscriptions** Adults - \$40 (\$13.34 per show, a 26% savings) • Students - \$25 (\$8.34 per show, a 30% savings)  
 • Children, under 10 - \$20 (\$6.67 per show, a 33% savings)

ADULTS: total # (series) \_\_\_\_\_ x \$40 = Total amount: \$ \_\_\_\_\_

STUDENTS: total # (series) \_\_\_\_\_ x \$25 = Total amount: \$ \_\_\_\_\_

CHILDREN: total # (series) \_\_\_\_\_ x \$20 = Total amount: \$ \_\_\_\_\_

**PATTY'S PLACE SERIES.** Pick between three show series, five show series or all seven shows.

**Subscriptions** 3 SHOWS Adult - \$40, Children - \$20 • 5 SHOWS Adult - \$55, Children - \$30  
 • 7 SHOWS Adult - \$70, Children - \$35

ADULTS: total # (series) \_\_\_\_\_ x \$40/\$55/\$70 = Total amount: \$ \_\_\_\_\_

CHILDREN: total # (series) \_\_\_\_\_ x \$20/\$30/\$35 = Total amount: \$ \_\_\_\_\_

**JAZZ SERIES.** All three shows.

**Subscriptions** General Public - \$60 • Students, Children under 10, Faculty, Seniors - \$50

GENERAL PUBLIC: total # (series) \_\_\_\_\_ x \$60 = Total amount: \$ \_\_\_\_\_

STUDENTS, CHILDREN, FACULTY, SENIORS: total # (series) \_\_\_\_\_ x \$50 = Total amount: \$ \_\_\_\_\_

SUGGESTED DONATION Amount: \$ 50.00

**GRAND TOTAL** Amount: \$ \_\_\_\_\_

**3-SHOW FAMILY SUBSCRIPTION.** Please choose three shows and dates from the following productions.  
 All dates can be changed by emailing or calling us, according to subscriber polices.

**THE VELVETEEN RABBIT**

*Best enjoyed by Pre-K - 3rd Grade*

October 28, 2006, 7pm \_\_\_\_\_  
 October 29, 2006, 3pm \_\_\_\_\_  
 November 4, 2006, 2pm \_\_\_\_\_

**THE BEST CHRISTMAS PAGEANT EVER**

*Best enjoyed by Pre-K - 6th Grade*

December 9, 2006, 2pm \_\_\_\_\_  
 December 10, 2006, 3pm \_\_\_\_\_  
 December 16, 2006, 7pm \_\_\_\_\_  
 December 23, 2006, 7pm \_\_\_\_\_

**A VERY OLD MAN WITH ENORMOUS WINGS**

*Best enjoyed by 6th Grade - College*

March 10, 2007, 2pm \_\_\_\_\_  
 March 10, 2007, 7pm \_\_\_\_\_  
 March 17, 2007, 2pm \_\_\_\_\_  
 March 17, 2007, 7pm \_\_\_\_\_

**CHARLOTTE'S WEB**

*Best enjoyed by Pre-K - 6th Grade*

May 18, 2007, 7pm \_\_\_\_\_  
 May 19, 2007, 7pm \_\_\_\_\_  
 May 25, 2007, 7pm \_\_\_\_\_  
 May 26, 2007, 2pm \_\_\_\_\_

**PATTY'S PLACE\***

*Best enjoyed by Pre-K - 3rd Grade*

October 28, 2006, 2pm \_\_\_\_\_  
 November 18, 2006, 2pm \_\_\_\_\_  
 December 23, 2006, 2pm \_\_\_\_\_  
 February 17, 2007, 2pm \_\_\_\_\_  
 April 21, 2007, 2pm \_\_\_\_\_  
 May 19, 2007, 2pm \_\_\_\_\_  
 June 9, 2007, 2pm \_\_\_\_\_

\*Choose Dates for your Patty's Place subscription. All performances also available for 3-Show Family Subscription.



## From the *Executive Director*

### JERRY GOEHRING

The 2006/2007 season promises to be exciting year at the Edgerton Center for the Performing Arts and I invite you to be a part of this landmark season. First and foremost, we are very proud to announce the premiere of our in-resident theatre company, Connecticut Family Theatre, the State's only year-round professional theatre company solely dedicated to families, educators and children.

The Edgerton Center's mission, in part, is to present "high quality programming for families, students and the community that will entertain, educate and

challenge" and the 2006/2007 season offers something for everyone, from the very young to those young at heart. We are a professional theatre that creates and presents productions appropriate for the ages and stages of a person's journey through life – from 3 years old to the golden years. We have a genuine concern for the arts experiences of the Sacred Heart University community, and the students, children and families of Connecticut.

Please join us for this year's season of exciting shows. Take your family to the Edgerton Center, introduce them to the wonder of live theatre and have fun! Years from now your children will thank you for it.



*The Best Christmas Pageant Ever!*



*Charlotte's Web*



*The Velveteen Rabbit*



*A Very Old Man with Enormous Wings*



*Patty's Place*



*Music and Jazz Series*



*Camps/Classes*



*Other Happenings at The Edgerton Center*



*Lecture*



*Your Donations Count*

SACRED HEART UNIVERSITY

**BOX OFFICE: 203-371-7908**

## EDGERTON CENTER FOR THE PERFORMING ARTS

JERRY GOEHRING, EXECUTIVE DIRECTOR

SACRED HEART UNIVERSITY  
5151 PARK AVENUE  
FAIRFIELD, CT 06825-1000

Non Profit  
U.S. Postage  
PAID  
Permit # 119  
Deep River, CT

\*\*\*\*\*AUTO\*\*5-DIGIT 06825 T15 P1

████████████████████ STREET

FAIRFIELD CT 06825-1427

