



# SACRED HEART UNIVERSITY

## 4th Annual HOLIDAY CLASSIC

December 28-30, 1970

Catholic University  
So. Connecticut  
Hartford University  
Middlebury

Marietta (Ohio)  
Stony Brook St.  
Johns Hopkins  
Sacred Heart University

# **A G I** **Rubber Company**



*If It's Rubber, We Make It*

**VICTOR J. CASTALDO**  
**PRESIDENT**

**141 Stratford Avenue**

**Phone: 366-4318**

**Bridgeport, Connecticut**

---

**"Live  
better-  
go  
People's"**



MEMBER FEDERAL DEPOSIT INSURANCE CORPORATION

---

For outstanding performance

# Accutron®

by Bulova

## ...the Space Age Timepiece

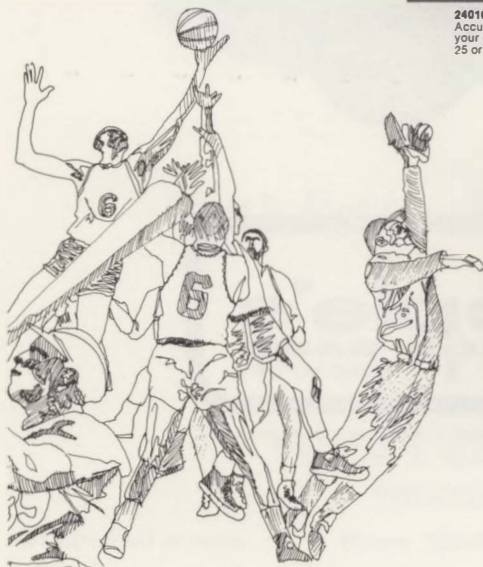
Tuning fork time. So precise that every Accutron watch possesses the same degree of accuracy - guaranteed to within a minute a month. A unique timepiece, ideal award for extraordinary achievement.

Prices shown include all dial and die costs. Watches purchased at these special prices through Bulova's athletic award program may not be resold. Minimum order for new accounts: 12 watches.

**Bulova Watch Company, Athletic Awards Division,**  
630 Fifth Avenue, New York, N.Y. 10020



<b>24018</b> Accutron "412" your cost \$96.50 25 or more \$89.00	<b>24300</b> Accutron Calendar "O" your cost \$111.00 25 or more \$102.00	<b>24503</b> Accutron Date and Day "F" your cost \$119.00 25 or more \$109.50
---	--	--



**02054**  
Accutron Empire "A" clock  
your cost \$111.00  
25 or more \$102.00  
A Prestige Award

---

**LINDAMIR REALTY CORP.**

— CUSTOM BUILDERS —

164 WOODY LANE

FAIRFIELD, CONNECTICUT

---



**You've got  
a lot to live**

**Pepsi's got  
a lot to give**

---

Jane I. Pacelli, R. Ph. — Richard R. Pacelli, R. Ph.

Rock A. Inglis, R. Ph.

**GREENFIELD PHARMACY**

65 Hillside Rd., Cor. Bronson Rd., Fairfield, Connecticut

PHONE: 255 - 1507

---

---

BEST WISHES FROM THE

**KREUZFAHRER FRATERNITY**

---

**Pi**

**Sigma**

**Phi**

**Wishes**

**Success**

---

**SIGMA TAU OMEGA**

**Welcomes All to the SHU**

**Holiday Classic**

---

# STATE NATIONAL BANK OF CONNECTICUT

MEMBER FEDERAL RESERVE SYSTEM • FEDERAL DEPOSIT INSURANCE CORPORATION

around connecticut since 1863



**Savings Services**

Time-Savings Accounts,  
No-Passbook Savings Account  
and Regular Passbook Savings Account  
**Checking Accounts** • Regular Business  
and Free-Checking (with \$200 minimum  
balance). All checking accounts free-of-  
charge. Free-charge on all checks, plus  
itemized monthly statements.

**Loan Services**

Instant-Cash Instant-Credit available with Check Guarantee Card.  
BankAmericard — the world's largest  
charge-card, conventional mortgages,  
FHA insured mortgages, commercial  
loans, personal loans, property improve-  
ment loans, student college education  
loans, time-savings financing.



**VAULT SERVICES • TRUST SERVICES**  
**CORPORATE AND COMPUTER SERVICES**  
**INTERNATIONAL BANKING DEPARTMENT**

For the nearest State National banking office, consult the yellow pages in your telephone book.



VOLKL



*Schaefer*

FISCHER

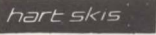
SPORTING GOODS



FOR ALL  
YOUR  
SKI NEEDS



HUMANIC



Compliments of

**A FRIEND**

66 EAST STATE STREET

WESTPORT, CONN.



**MIKO BROTHERS, Inc.**

GENERAL CONTRACTORS

Bridgeport, Connecticut



**THE  
FAIRFIELD  
STORE**

1499 Post Road

Fairfield, Connecticut

Compliments of

**FAIRFIELD CENTER  
JEWELERS, Inc.**

**Silversmiths - Jewelers**

1498 Post Road

Fairfield, Connecticut

Good Luck

**BEARDSLEY, BROWN  
and BASSETT, Inc.**

**Insurance Brokers**

863 Wood Avenue

Bridgeport, Connecticut

Phone: 366-1815

---

**ARCTIC SPORTS SHOP**

605 Arctic Street, Bridgeport

Headquarters

For

**PLAQUES, TROPHIES**

and

**ALL AWARDS**

---

**LOCKSHIER**

**Roofing and Siding**

**Leaders and Gutters**

(We Specialize in Wind-Seal Shingles

and Vinyl Sidings)

535 Barnum Terr. Ext.,

Stratford, Connecticut

Phone: 378-0508

**FAIRFIELD**

**CLEANERS & DYERS**

1580 Post Road      Fairfield Center

**Laundry - Rug Cleaners**

Discount for local college students

Phone: 255-1068

---

Good Luck Pioneers

**PANTA DELPHIAN SOCIETY**

---

---

# 4th ANNUAL SACRED HEART HOLIDAY CLASSIC

## PARTICIPANTS

Catholic University

Sacred Heart University

Marietta College (Ohio)

Hartford University

Southern Connecticut

Middlebury College

Stony Brook State

Johns Hopkins

## SCHEDULE:

### First Round — Dec. 28

#### (Afternoon)

- Game 1: 2 p.m. Catholic University vs. Marietta College  
Game 2: 4 p.m. Southern Connecticut vs. Stony Brook State

#### (Evening)

- Game 3: 7 p.m. Hartford University vs. Johns Hopkins  
Game 4: 9 p.m. Sacred Heart University vs. Middlebury

### Second Round — Dec. 29

#### (Afternoon)

- Game 5: 2 p.m. Loser Game No. 1 vs. Loser Game No. 2  
Game 6: 4 p.m. Loser Game No. 3 vs. Loser Game No. 4

#### (Evening)

- Game 7: 7 p.m. Winner Game No. 1 vs. Winner Game No. 2  
Game 8: 9 p.m. Winner Game No. 3 vs. Winner Game No. 4

### Final Round — Dec. 30

#### Consolation

- Game 9: 6 p.m. Loser Game No. 7 vs. Loser Game No. 8

#### Championship

- Game 10: 8 p.m. Winner Game No. 7 vs. Winner Game No. 8
-

---

## INTRODUCTION AND HISTORY

The fourth annual Sacred Heart University Holiday Classic basketball tournament is by far the best and most representative field ever assembled.

Eight teams, from five states and the District of Columbia, will participate in the three-day, ten-game schedule at the Sacred Heart gym. Southern Connecticut State College, which won the championship with an 82-74 victory over host Sacred Heart last year, is back to defend its crown.



Stony Brook State College of New York, which lost the 1968 final to the Pioneers, is the only other Classic team to have ever participated in the event. Newcomers include Catholic University of Washington, D.C., the University of Hartford, Johns Hopkins of Baltimore, Md., Marietta College of Ohio and Middlebury College of Vermont.

The inception and growth of the Holiday Classic is the result of many hours of tedious work by its founder J. Donald Feeley, athletic director and varsity basketball coach at Sacred Heart. From a four-team tournament in 1967, the Classic expanded to its present form in 1968.

Co-sponsored by the Fairfield Kiwanis Club and the Pi Delta Fraternity at SHU, a total of 22 different collegiate teams have now played in the tournament.

Sacred Heart, which meets Middlebury Dec. 28 in the nightcap of a four-game opening day, captured the first two Classic crowns. The Pioneers edged Bentley, 80-79, in the 1967 event and tripped Stony Brook, 53-51, a year later.

Catholic University and Marietta launch the tourney slate at 2 p.m. while Southern battles Stony Brook at 4 p.m. in the other half of the afternoon session.

Hartford and Johns Hopkins clash at 7 p.m. in the opener of the evening doubleheader, followed by the SHU-Middlebury contest at 9 p.m.

Losers' bracket games are scheduled for Dec. 29 at 2 and 4 p.m. with the winners' bracket semi-finals on tap for 7 and 9 p.m. The consolation and final round games are slated Dec. 30 at 6 and 8 p.m.

---



**SACRED HEART UNIVERSITY VARSITY BASKETBALL TEAM** — Members of the squad include (left to right): first row — Bill Cespedes, Joe Blacker, Dan Haines, Bob Gers and Paul Jakusik; second row — Mike Mlynarski, Marty McGann, Jim Kelly, Ray Vyzas and Phil Russo; third row — head coach J. Donald Feeley, Ed Czernota, Mike Eiring, Kevin Kirby and assistant coach Tom McCorry.

## SACRED HEART

Sacred Heart University is out to regain the championship of the Holiday Classic basketball tournament which it lost for the first time last year.

Coach J. Donald Feeley's quintet completed their pre-holiday play in strong fashion with wins over Pratt Institute, Lehman and Pace colleges. The Pioneers, who lost games to Catholic University, C. W. Post and Hofstra by a combined total of nine points, carry a 5-3 overall record.

Before the loss to SCSC in the 1969 finals, the host Pioneers had reeled off seven consecutive Classic wins, including thrillers in the 1967 and 1968 title games.

Senior captain Dan Haines, a 6' 3" guard, was the winner of the MVP award the first year while Bruce Bernhard captured the honor in 1968.

Pacing the SHU cagers is 6' 8" junior center Ed Czernota. The former Kolbe High flash is averaging 21 points and 15.5 rebounds a game. His 32 points and 26 rebounds were tops in the win over Pace.

Forwards Bob Gers (14.6) and Ray Vyzas (14.0) join Haines (11.6) and sub guard Paul Jakusik (11.0) are the other top scorers. Gers has also dished out 63 assists.

Vyzas has averaged close to ten rebounds while Cespedes is a defensive specialist. Both boys are sophomores.

Sacred Heart's initial tourney tussle is against an upset-minded Middlebury club which has knocked off hosts teams the last two years in the Pocono Classic and Albright Invitational.





**CATHOLIC UNIVERSITY VARSITY BASKETBALL TEAM** — Members of the team include (left to right): first row — Mike Pones, Jim Wiley, Ron Hicks, Jack Bruen, Tom Burke and Jerry N'ckens; second row — Kevin Cronin, Jay Ambrose, Joe Good, Vin LeBuffe, head coach Robert C. Reese, Greg Howison, Bob Adrion and Jim Sinkhorn. Jim Howard was absent when photo was taken.

## **CATHOLIC UNIVERSITY**

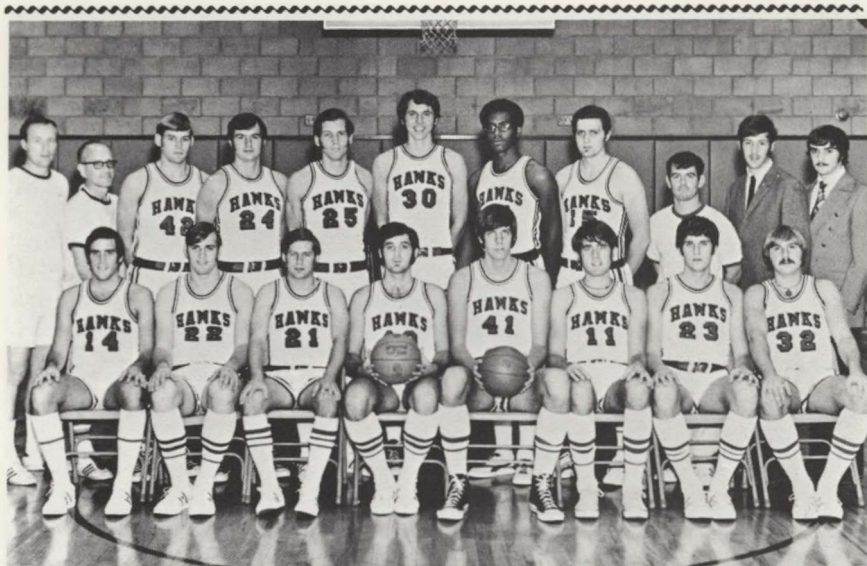
After five straight wins to open the season, including a last-second 71-70 nod over Sacred Heart, Catholic University finally lost with George Washington the culprit.

Nevertheless, coach Bob Reese's team enters the Holiday Classic in high regard. The Cardinals, 6-18 a year ago, compete in the partitioned Mason Dixon Conference.

Catholic University, with prestigious wins over Delaware and American University, also defeated tourney participant Johns Hopkins. Leading the attack are seniors Tom Burke and Jim Howard. Howard, a 6'5" forward, played scholastically at Fairfield's Warde High School under SHU coach J. Donald Feeley.

Juniors Jack Bruen, Joe Good and Vin LeBuffe have also made key contributions while freshman Bob Adrion, a 6'4" forecourt operative, is a vital acquisition to the squad.

Of the five Cardinal victories, three have been by the combined margin of six points, so it appears that they have the stamina to prevail in tight situations.



**HARTFORD UNIVERSITY VARSITY BASKETBALL TEAM** — Members of the team include (left to right): first row — Ronnie Berger, Edward Hill, Edward Beadle, co-captains Thomas Meade and Wayne Augustine, Lee Kubachka, Gregory Turek and John Dufault; second row — head coach Gordon F. McCullough, assistant coach Roger Wickman, Richard Kuhlbars, Michael Sadowski, Edward Dunn, Richard Gwozdz, Arnold Holmes, Michael Meade, trainer Richer Cote, and managers Marc Dinnerman and Alan Kaplan.

## UNIVERSITY OF HARTFORD

The University of Hartford, which opens its Classic play against Johns Hopkins, has to rate as one of New England's premier teams. Currently the Hawks are 6-1.

Coach Gordon McCullough has a veteran team which carved out New England's top percentage record of 19-3 last year. The only disappointment was that the NCAA selection committee failed to extend them a tournament bid.

McCullough's leading performers have been 6' 2" forward Tom Meade and 6' 9" center Wayne Augustine. Meade has averaged close to 25 points a game to lead Connecticut's collegiate scorers. He scored 35 points against Middlebury and 32 against Lowell Tech.

Augustine, a tiger off the boards, is close to the 20-point per game level. Should Hartford and Sacred Heart advance past their opening round tussles, it would set up the initial meeting between these two growing powers.

Hartford won its own Hartford Invitational to start the year and lost to Williams for its lone setback. Three times the Hawks have hit over 100 points and average 91 a game.



JOHNS HOPKINS VARSITY BASKETBALL TEAM — Team members include (left to right): first row — George Apple, head coach Gary Rupert and Joe Loveland; second row — Charley Poole, Dave Rebovich, Gary Handleman, Al Schreiber, Hal Grinberg, Don Rush, David Kaye, Don Carlson and Clark Daggett.

## JOHNS HOPKINS

Despite a rather slow start the Blue Jays of Johns Hopkins will be a vastly improved team for years to come. The reason is simple — a new coach named Gary Rupert.

Rupert, an All-NAIA star with Bloomsburg State, was hired by Hopkins after turning in three outstanding years as assistant coach with Philadelphia Textile, defending NCAA small college champions.

Johns Hopkins, which posted its first winning ledger in 24 years at 10-9 last season, ended a four-game losing skein with a 69-67 triumph over Swarthmore, a Holiday Classic competitor last year. The only one-sided loss was a 90-61 decision to Catholic University.

Pacing the Middle-Atlantic Southern Division combine are co-captains George Apple and Joe Loveland. The Blue Jays feature four returning starters from last year and have scoring threats Gary Handleman and Hal Grinberg back. Both hit in twin figures as sophomores.

Andy Lynch, a 6' 8" senior, lends board strength to Johns Hopkins while Dave Kaye and Al Schreiber are other potential stars.

Rupert best summed up the situation at Hopkins as "basketball at Johns Hopkins is in the future after an unglorious past."





**MARIETTA COLLEGE VARSITY BASKETBALL TEAM** — Members of the team include (left to right): first row — Dave Waugh, Bob Vojtecky, Dick Schelat, Gary Popplewell, Tom Brewer, Dave Leatherman and Asa Bradbury; second row — head coach Phil Roach, Howie Ames, Ron Moyers, Lew McCreery, Tom Barnes, Dave Stone, Richard Raden, John Decker and assistant coach Carl Hamill.

## MARIETTA COLLEGE

The Pioneers of Marietta College must be regarded as a serious contender for the Holiday Classic championship. In its first four games Marietta posted a perfect record while averaging 97.3 points.

Coach Phil Roach's charges are led by 6' 3" guard Tom Brewer with an 18.8 per game average. Gary Popplewell (17.8), Dave Leatherman (15.0), Rich Raden (14.7) and Dick Schelat (13.5) were the other leading scorers entering the Marion Invitational tournament Dec. 21-22.

Marietta, a member of the rugged Ohio Conference, posted a 14-8 record last year and has been playing the round ball sport 68 years. Relying on primarily home grown "Buckeyes", Roach has five returning lettermen on his club, including a good group of sophomores.

Roach is in his first year at Marietta after coaching freshman basketball and varsity soccer at Ohio University. Already boasting a 3-0 league record, the Pioneers appear to be the team capable of dethroning last year's champion Capital, which had a 13-0 Ohio Conference mark.



**MIDDLEBURY COLLEGE VARSITY BASKETBALL TEAM** — Members of the team include (left to right): kneeling — tri-captains John Flanagan, Jimmy Keyes and Lee Cartmill; second row — head coach Tom Lawson, Barry Metayer, Al Turner, Rich Swacus, Rick Hayes, Art Deske, Bob Schneider, Russ Chapel, Bob Elliot, Dave Kuftra, John Olenoski, Jon Torrant, Rick Dowd, Lenwood Cross, manager Ron Duquette and assistant coach Gary Hindley.

## MIDDLEBURY COLLEGE

Middlebury College, a co-educational, liberal arts college founded in 1800, is the opening round foe of host Sacred Heart University.

The Panthers of coach Tom Lawson were 1-3 at press time with their lone triumph against a strong Amherst club. Although skiing rates as the main winter sport at the Vermont institution, the cage squads have made notable marks in recent Christmas tournaments.

Last year Middlebury knocked off host Albright in the Albright Invitational before losing to NCAA small college champion Philadelphia Textile in the finals. In 1968 the Panthers upset host East Stroudsburg in the Pocono Classic, but bowed to Muhlenburg in the finals.

Tri-captains Lee Cartmill, John Flanagan and Jim Keyes are the big guns for Middlebury while freshman guard Al Turner is a pleasant surprise for the Panthers.

For the third straight year, Middlebury will have the opportunity of eliminating the host team from tournament play.



**SOUTHERN CONNECTICUT VARSITY BASKETBALL TEAM** — Members of the team include (left to right): first row — John Miller, Greg Bradley, Morris Moreland, Stu Abrams and Bob Dembinski; second row — Keith Shannon, Ed DeGrant, Ted Kaczynski, Bill Morgan and Dave Netinho; third row — manager Pete Daniel, Dave Kingsley, Ilmar Tarikas, John Ivey and Ron Conlan.

## SOUTHERN CONNECTICUT

The Owls of Southern Connecticut feature eight returning lettermen from last year's banner combine. Coach Ed Brown's club copped the Holiday Classic crown with a thrilling win over Sacred Heart.

Southern Connecticut enters the tournament with a 4-2 record with tough Springfield College. The losses were to university foe Fairfield and four-time New England small college kingpin American International College.

The key to the Owls' hopes of repeating as North-East league titlist reside with seniors Morris Moreland and Ted Kaczynski and junior forward Ilmar Tarikas. Moreland, a product of Hillhouse High, is a 6' 4" center capable of the big game every outing.

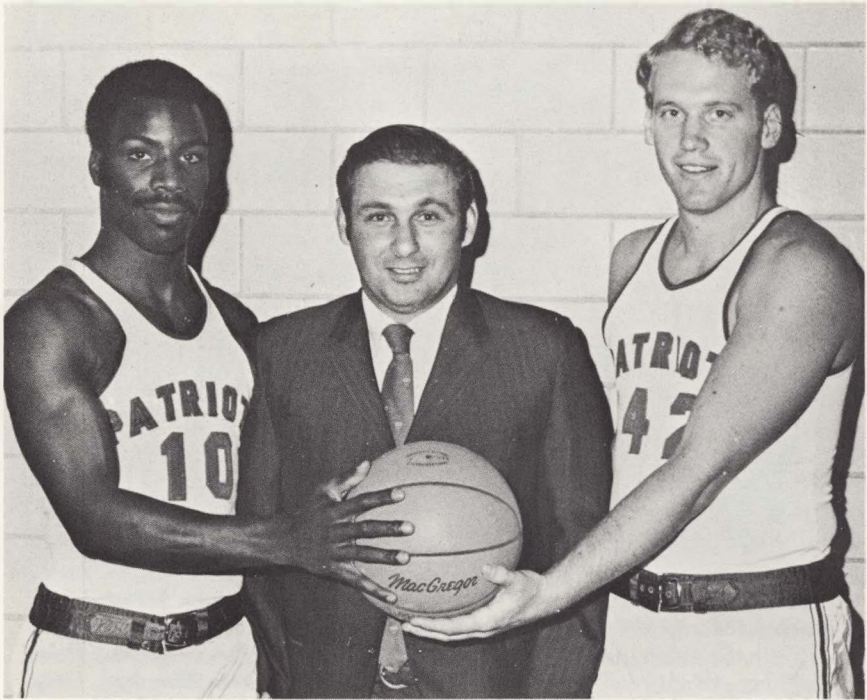
Kaczynski, a 6' 0" guard, averaged 10.2 points last year while the 6' 4" Tarikas hit at 12.3 points. Greg Bradley and Stu Abrams, other top performers, are tri-captains along with Moreland.

Ed DeGrant, Jim Considine, Abrams, Bradley and Kaczynski give Brown a wide assortment of backcourt personnel.

Glen Pollard and Jim Gleason, starters last year, are the lone graduation losses for SCSC. Pollard, the team's top scorer with a 13.5 mark, also won the Most Valuable Player in last year's Classic.

Southern's victories over Bridgeport, Lehman and King's Point have all been one-sided contests.





**STONY BROOK STATE COLLEGE** — Leading players for the Stony Brook State College varsity basketball team flank Coach Roland Massimino (center). William Myrich (10), a junior guard, and senior forward Gene Willard (42) have led the Patriots to a 6-2 pre-tourney record.

## **STONY BROOK STATE COLLEGE**

Stony Brook State College, making its second Holiday Classic appearance, faces a tough opening round foe in defending champion Southern Connecticut.

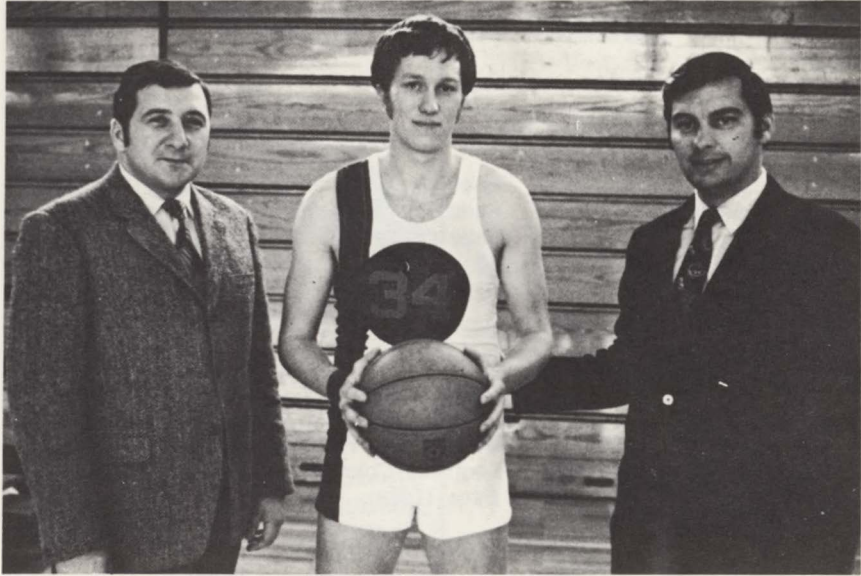
However, the Patriots of second-year mentor Roland Massimino, are ready for the task. Massimino, who guided the club to an 18-4 record last year, relies on defense to win games.

Boasting a 6-2 record, Stony Brook has allowed opponents just over 63 points a game, lowest average in the Classic. It was DEFENSE that led the Patriots to the Knickerbocker League title and a berth in the NCAA Small College Regional Tournament in 1969-70.

Co-captains Bill Myrick, 5' 11" junior guard, and 6' 3" senior forward Gene Willard, are prime reasons for the Patriots' success. Art Baclawski and Dudley Cammock give Massimino a pair of towering rebounders.

Willard and junior Steve Dannhauser both played scholastic ball at St. Dominic's in Oyster Bay, L.I., under Sacred Heart's assistant coach Tom McCorry.

---



**SACRED HEART UNIVERSITY'S BIG THREE** — Dan Haines, captain of the Sacred Heart University basketball team, flanks head coach J. Donald Feeley (right) and assistant coach Tom McCorry. Haines, who won the Holiday Classic M.V.P. award as a freshman, will lead the Pioneers in quest of this year's title.

## 1969-70 CLASSIC HIGHLIGHTS

The third annual Sacred Heart University Holiday Classic was a smashing success from all aspects. Not only did record crowds jam the SHU gymnasium, but four team and six individual records were broken, along with one being tied.

Southern Connecticut, which won the championship, also had the tourney's MVP in guard Glen Pollard. Returning center Morris Moreland and graduated forward Jim Gleason were named second team all-tournament team.

Sacred Heart, which won the first two Classics, set two team marks for most points (282) and highest scoring average (94.0). Both records were for three games played. Southern had most field goals (114) for three games, while Trinity, the third place team, set a new scoring margin of 34 points.

The first team all-tournament team included guards Pollard, Rich Pucciarello (Sacred Heart), and John Sedlack (Queens), forwards Eric Bertelsen (Bates), and Bob Gers (Sacred Heart) and center Joe Pantalone (Trinity).

Howie Greenblatt (Trinity) and Paul Schetman (Swarthmore) were the second team guards with Bruce Bernhard (Sacred Heart) the other forward.

Pantalone's 38 points against Sacred Heart was a new high while Sedlack (37) and Pucciarello (35) also had high games. Pucciarello's 89 points and 29.6 average were new records.

Pantalone and Sedlack tied for a new mark of 15 field goals in a game while Pucciarello's 34 for the series was another new standard. Pucciarello and Dan Haines tied the old record for most free throws in a series at 34.

---

## HOLIDAY CLASSIC RECORDS

### TEAM

#### Most Points

Game	107	Pace vs. Norwich (12-28-68)
Series (3)	282	Sacred Heart (1969)
Series (2)	190	Pace (1968)

#### Scoring Average

Series (3)	94.0	Sacred Heart (1969)
Series (2)	95.0	Pace (1968)

#### Most Field Goals

Game	41	Norwich vs. Pace (12-28-68)
Series (3)	114	Southern Conn. (1969)
Series (2)	72	Pace (1968)

#### Most Free Throws

Game	35	Pace vs. Norwich (12-28-68)
Series (3)	78	Sacred Heart (1968)
Series (2)	46	Pace (1968)

#### Biggest Point Spread

34	Trinity (90), Swarthmore (56) — (12-28-69)
32	Southern (103), Dickinson (71) — (12-28-69)
24	Sacred Heart (87), Hunter (63) — (12-27-68)

### INDIVIDUAL

#### Most Points

Game	38	Joe Pantalone (Trinity) vs. SHU—(12-29-69)
Series (3)	89	Rich Pucciarello (SHU) — 1969
Series (2)	57	Corney Reed (Pratt) — 1937

#### Most Field Goals

Game	15	Joe Pantalone (Trinity) vs. SHU—(12-28-69)
	15	John Sedlack (Queens) vs. Trinity (12-30-69)
Series (3)	34	Rich Pucciarello (SHU) — 1969
Series (2)	22	Jeff Kelley (Pace) — 1968

#### Most Free Throws

Game	14	Rich Pucciarello (SHU) vs. Eastern Conn. (12-28-68)
Series (3)	21	Rich Pucciarello (SHU) — 1968, 1969
	21	Dan Haines (SHU) — 1969
Series (2)	16	Eric Bertelsen (Bates) — 1969

#### Scoring Average

Series (3)	29.6	Rich Pucciarello (SHU) — 1969
Series (2)	28.5	Corney Reed (Pratt) — 1967

---



MEMBER FEDERAL DEPOSIT INSURANCE CORPORATION

BRIDGEPORT                      to                      FAIRFIELD  
STRATFORD                      TRUMBULL  
HUNTINGTON                      MONROE

## MERCURIO, INC.

**Meats - Fruits - Groceries**

Daily Deliveries

Phone: 359-334

Fairfield, Connecticut

## JACK'S

**REEF ROAD MARKET**

714 REEF ROAD

FAIRFIELD, CONNECTICUT

Phone: 295-6384

## B-I-T-O-A

**THE FAIRFIELD INN**

CATERERS

— Cocktails from 4:00 p.m. —

680 Post Road

Fairfield, Connecticut

Tel.: 259-0841

---

Compliments of

**REMAR PRINTING CO., Inc.**

PRINTERS & PUBLISHERS

590 Noble Avenue

Bridgeport, Connecticut

**FAIRFIELD COUNTY  
REAL ESTATE CO.**

T. J. Keegan

G. E. Malafronte

200 Mill Plain Road

(at Conn. Tpke. Exit 21)

Fairfield, Conn. 06430

Phone: 259-8308

---

**TUNXIS HILL ESSO**

531 Tunxis Hill Road

Fairfield, Connecticut

Tel.: 334-7997

Compliments of

VIC CHAMPAGNE, Prop.

---

**M&F** is our name... but call us  
**THE SATURDAY SAVINGS BANK**

We're the only savings bank in the greater Bridgeport area that's open Saturday mornings to noon—at all five offices.



MEMBER FDIC

**MECHANICS & FARMERS  
Savings Bank**

Extra Hours: Sat. mornings at all offices. Drive-ups and walk-ups at all offices from 8:30 a.m. Mon. thru Sat. MAIN OFFICE 930 Main St., Bridgeport, BOSTON AVE. at William St., Bridgeport, FAIRFIELD Villa Ave. and Kings Hwy., TRUMBULL White Plains Rd. Shopping Center, STRATFORD Main and Barnum Ave. One hour free parking at any Park & Shop.



---

**H. JACKSON STEARNS &  
COMPANY**

INSURANCE BROKERS

2480 Post Road  
Fairfield, Connecticut

Telephone: 255-2867

---

**ANDREW J. FASULO**

**Custom Home Building**

Sub Contracting Specialist

All Types Remodeling

154 Warsaw Street  
Fairfield, Connecticut

Phone: 334-7432

Compliments of

**CELANESE COATING CO.  
DEVOE PAINT**

"America's Oldest Paint Makers"

522 Pequonnock Street  
Bridgeport, Connecticut

Phone: 336-1101

---

**E T N A**

**TRAVEL BUREAU, Inc.**

**Travel Tours**

Organizers of Tours & Cruises  
Independent and Conducted

941 Sast Main Street  
Bridgeport, Connecticut

Phone: 334-5525

JOSEPH E. GALLUZZO, Mgr.

---

**Alvin Street Package Store**

Excellent Selection of Wines

Liquor & Beer

12 Alvin St., Fairfield, Conn.

Tel.: 333-7931 • Free Delivery

JOHN A. ROMA

---

---

**BOWL "O" RAMA**

Bridgeport's Finest 10 Pin Center

Brookside Shopping Center

4487 Main St., Bridgeport, Conn.

Tel.: 372-3526

---

Compliments of

**HINE BROS. GARAGES, Inc.**

2269 Post Road

Fairfield, Connecticut

Tel.: 255-0401

---

**COPPOLA MOTORS, INC.**

500 Kings Highway

Fairfield, Conn. 06430

---

**WIRETEX MFG. CO.**

10 Mason Street

Bridgeport, Conn. 06605

---

**FAIRFIELD COUNTY**

**SPRINKLER CO.**

Incorporated

Post Office Box 267

15 Kings Highway

Westport, Conn. 06880

Fire Sprinkler Systems Specialists

Tel.: 227-2039

---

Good Luck Pioneers

**Gracie & George Farrell**

**and Family**

---

**TONIGHT:**

DINE LAVISHLY  
IN THE ELEGANT



---

**H. PETER QUINN, Jr.**

**Insurance**

1070 Park Avenue

Bridgeport, Connecticut

Phones: 367-7757 — 335-6678

---

**B & B ELECTRIC SERVICE**

BOB BRUNETTI

38 Lind Street

Fairfield, Connecticut

Tel.: 255-1243

---

**THE DOYLE AGENCY**

**General Insurance**

1583 Post Road

Fairfield, Connecticut

Phone: 255-3539

---

**ACADEMY DRYWALL CO.**

"Drywall is our Business"

FULLY INSURED

60 Up St., Bridgeport, Conn. 06606

Tel.: 372-7711

ERNEST CROOK

---

Compliments of

**MR. and MRS.**

**DOMENICK J. GALLUZZO**

**and**

**FAMILY**

---

**INSURANCE REAL ESTATE**  
**333-0121**



*The*

Ron D'Elia

**D'ELIA AGENCY**

EST. 1903  
595 WASHINGTON AVE.

---

**FAIR-VIEW CAMERA SHOP**

2189 Black Rock Turnpike

Fairfield, Connecticut

336-2702

---

**GEORGE E. BOLAND**  
**AND SONS**

**General Insurance**

**Real Estate**

Phone: 259-1696

1 Heritage Square, Fairfield, Conn.

---

**SALON di ROMA**

"HAIR STYLIST"

935 White Plains Road

Trumbull, Connecticut

261-0305

**RAY PACIFIC**

Apparel for Gentlemen & Their Sons

Trumbull Shopping Park

Good Luck Pioneers

**BETA DELTA PHI**

**JOEY I's BARBER SHOP**

Specializing in Men's Hairstyling

Razor Cutting • Facials

3135 Main Street

Bridgeport, Conn. 06606

Joseph R. Iannucci

Tony Pucci



For over 150 years, the Connecticut National Bank has been proud to serve Fairfield County. Today, CNB Offices in 22 communities attest to your confidence in our professional banking experience. Let us continue to serve you. Our Total Service Banks can meet every banking need you'll ever have.

**Connecticut National Bank**

Member: F.D.I.C.

---

# First Federal Savings

The Largest Savings  
and Loan Association  
in all of Connecticut

*Best Wishes  
to the  
Fairfield  
Kiwanis Club*



MAIN OFFICE — NEW HAVEN  
FAIRFIELD OFFICE — 1177 POST ROAD



---

# Patrons

Mr. and Mrs. J. Donald Feeley  
Mr. and Mrs. Dudley J. Savard  
Mr. and Mrs. Dominick L. Colavito  
Mr. and Mrs. Clarence B. Naramore, Jr.  
Dr. and Mrs. George Lacovera  
Mr. and Mrs. Wallace A. Porier  
Dr. and Mrs. Gordon Jonas  
Dr. and Mrs. James Sheehy  
Mr. and Mrs. Vincent Iannuzzi & Family  
Robert A. Convertito  
Franklin Pharmacy  
Mr. and Mrs. Rocco D. Calabrese  
Steve Lako  
Mr. and Mrs. Robert A. Sherwood  
Mr. and Mrs. John A. Croffy  
Mr. and Mrs. C. Raymond Hughes  
Mr. and Mrs. James Diorio  
West Broad Chevron  
Chris' Yarn Boutique  
Mr. and Mrs. Louis R. Brothersen  
Poster Hardware  
Mr. and Mrs. Roy H. Ervin  
Mr. and Mrs. John P. Fray  
Mr. and Mrs. Emil Garofalo  
Mr. Martin Welles  
Mr. and Mrs. Robert P. Shea  
Dr. and Mrs. Maurice O'Sullivan  
Mr. and Mrs. William F. Grant  
Mr. and Mrs. John Shannon

---



*when you're  
having more  
than one*



Schaefer Breweries, New York and Albany, N.Y., Baltimore, Md.



---

Improve the quality of life



**The Kiwanis Club**  
**of**  
**Fairfield, Conn.**

---