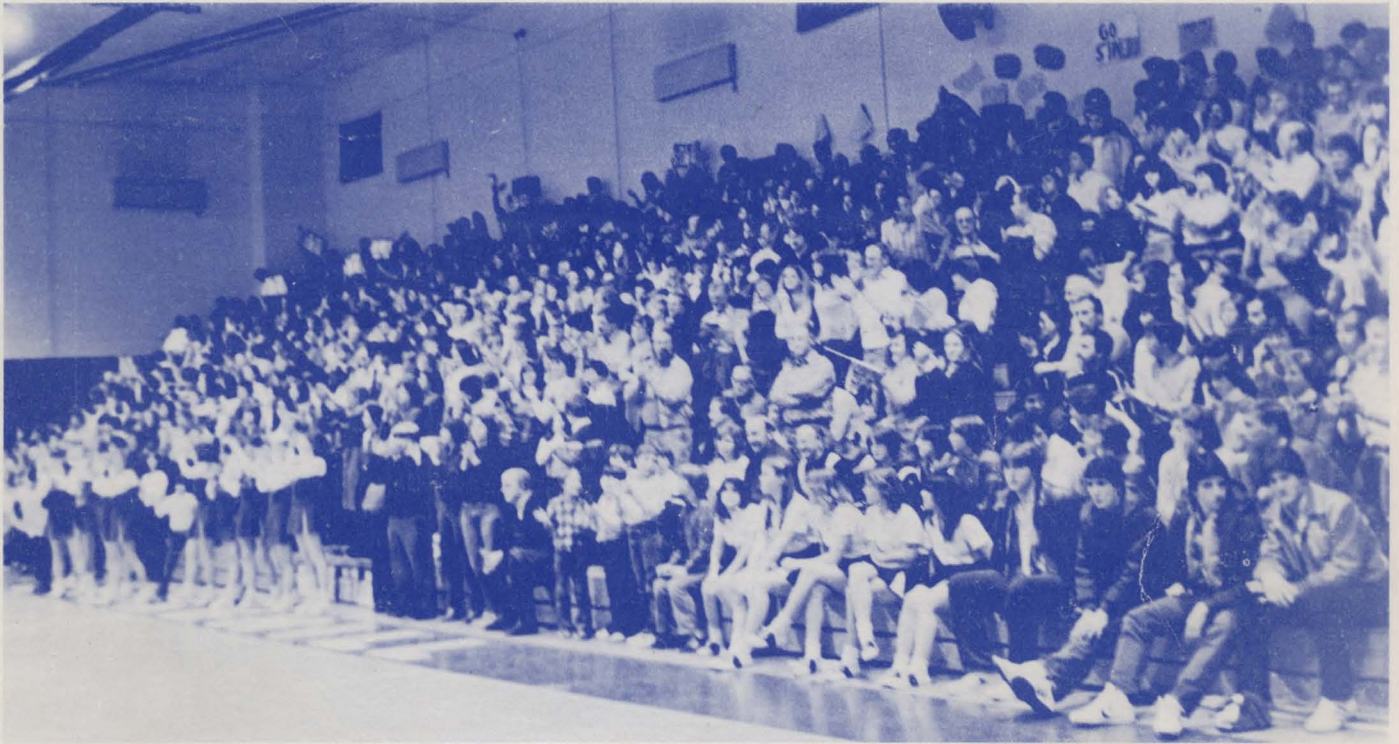


NCAAAction!



NEW ENGLAND REGIONALS

1982 NCAA DIVISION II

Merkert Gymnasium • Stonehill College

Friday-Saturday • March 5-6



PRICE \$1.00



OFFICE OF THE PRESIDENT

STONEHILL COLLEGE

NORTH EASTON · MASSACHUSETTS 02356

HOLY CROSS FATHERS

Greetings From the President. . .



March 4, 1982

Dear Participants in the NCAA Regionals:

It is my special pleasure to welcome you to Stonehill for the Playoffs of the 1981-1982 season. It is the first time in the College's history that it has been granted the signal honor of hosting this event and that in itself marks the occasion as a milestone for us.

The news of our selection as host produced an immediate and intense activity on the part of Stonehill personnel, especially the staff of the Athletic Department. That was to ensure that every effort be expended to make the Playoffs an enjoyable and exciting event.

It is my hope that we can make your stay at Stonehill as hospitable and gracious as lies within our power, and that for all of you it will be a memorable occasion characterized by good sport, clean competition and the friendship these generate.

Sincerely yours,

A handwritten signature in dark ink that reads "Bartley MacPhaidin, C.S.C." The signature is written in a cursive style.

(Rev.) Bartley MacPhaidin, C.S.C.
President

dff

YOUR HOST: STONEHILL COLLEGE



Stonehill College a four-year coeducational liberal arts college in southeastern Massachusetts, was established by the Congregation of Holy Cross in September, 1948. It is located on 618 acres which include the former Frederick Lothrop Ames estate in North Easton.

The College opened with courses leading to the degrees of bachelor of arts and bachelor of science. In September 1949, Stonehill College inaugurated a curriculum leading to the bachelor of science in business administration. The College became coeducational in 1951. The evening division opened in 1970.

Since its first class graduated in 1952, Stonehill has sent almost 7,000 men and women on to higher studies and into business and the professions. The day college student body numbers approximately 1725. Nearly 70 percent reside on campus. There are no racial or religious barriers to membership in the student body or the faculty.

Student participation in the decision process goes a long way at Stonehill towards the creation of a healthy campus atmosphere. The College is small enough to create strong faculty/student bonds. There are approximately 85 full-time and 35 part-time faculty members. Seventy percent of this full-time faculty holds a doctoral-level degree.

Competitive among colleges, Stonehill freshmen generally rank in the top quarter of their high school class with SAT scores above the national average. Campus location, size of the student body, and flexibility in academic program choice are found to be important factors in the students' selection of Stonehill.

Three academic degree programs are segmented into 25 major fields of study - Bachelor of Arts: American Studies, Early Childhood Education, College Studies, Criminal Justice, Economics, Elementary Education, English Studies, History, International Studies, Mathematics, Modern Languages, Philosophy, Political Science, Psychology, Public Administration, Religious Studies, and Sociology. Bachelor of Science: Biology, Chemistry, Health Care Administration, Medical Technology, and Pre-Engineering. Bachelor of Science in Business Administration: Accounting, Financial Management, Human Resource Management, and Marketing Management.

Stonehill students may elect to enhance a major field of concentration through participation in the Non-Traditional Study Program, the Foreign Study Program, and internships. Through these programs, students gain some unusual and valuable experiences, either on or off campus. Many Stonehill students spend time in foreign countries such as France, Spain, and England, or enroll in the University College Dublin/Stonehill Program. Non-Traditional study projects frequently involve participation with an off-campus group such as state schools for the retarded, various hospitals, or the local Y.M.C.A. Internship positions are available through Stonehill's involvement with institutions such as the Washington Center for Learning Alternatives, the Woods Hole Oceanographic Institute, and the Argonne National Laboratory.

Stonehill's Division of Continuing Education sponsors a variety of educational programs for the part-time, adult student. Each year, the Division serves over 4,500 person in its credit evening program, its non-credit courses, its residential summer program, and its academic summer sessions.

The Evening Division offers 110 credit courses in 25 areas of study. Conferences and Institutes provides a number of non-credit programs for professionals as well as assisting in the planning and implementation of educational conferences.

Stonehill provides a full range of student services, such as, Counseling, Placement, Health, Campus Ministry, Athletics, and Student Activities.

NCAA serves nation's schools

As the National Collegiate Athletic Association begins its 76th year of service, the major governing organization for intercollegiate athletics in the United States continues to grow.

A call for stricter control of college football by President Theodore Roosevelt because of the violence in the game brought together 13 institutions in 1905, formulating the original communications base for college athletics.

This initial body called itself the Intercollegiate Athletic Association and was officially constituted March 31, 1906. In 1910, the name was changed to the National Collegiate Athletic Association.

Seven progressive decades have molded this original 13-member body into a membership today of more than 860 colleges, universities, conferences and affiliated organizations.

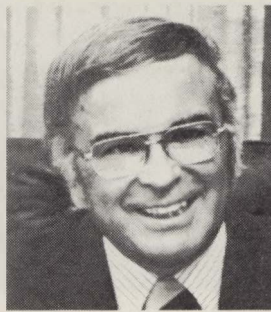
Administration and rules interpretation occupied early efforts of the organization. Shortly after World War II, the NCAA adopted legislative and executive powers, changing its function into one dealing with virtually all issues concerned with intercollegiate athletics.

Service first

Many things have become associated with the NCAA during its colorful history. Highest priority goes to the service it provides to more than 880 members, acting as the true "voice" of college athletics today.

Each January the NCAA membership comes together at the annual Convention to review, propose and amend legislation. The Convention presents the opportunity for the nation's institutions of higher learning to speak and act on athletic matters at the national level.

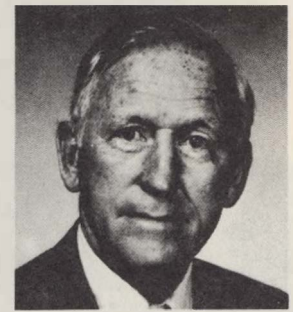
Acting in the best interests of its membership, the NCAA strives to per-



Walter Byers
Executive Director



James Frank
President



John L. Toner
Secretary-Treasurer

form these specific functions among its many other responsibilities:

- Conducts 43 annual National Collegiate Championships in 19 men's sports for three separate divisions. Three championships (Division I, Division II and Division III) are held in baseball, basketball, cross country, golf, lacrosse, soccer, swimming, tennis, outdoor track and wrestling. Two championships (Division I and Division II) are staged in gymnastics and ice hockey. Fencing, rifle, skiing, indoor track, volleyball and water polo hold single National Collegiate Championships, while football is contested in Divisions I-AA, II and III. The NCAA is conducting 29 women's championships in the 1981-82 academic year in addition to the 43 held for men. Women's championships will be held in all three divisions in basketball, cross country, field hockey, softball, swimming, tennis, track and volleyball. Two championships (Division I and Division II) will be staged in gymnastics, while fencing, golf and lacrosse will hold single National Collegiate Championships. The National Collegiate Championship dates back to 1883 in tennis; and during this 99-year history, more than 12,000

student-athletes have earned the coveted title of "National Collegiate Champion."

- Maintains 14 men's rules committees to formulate, copyright and publish rules of play for the government of collegiate sports. Members of these and many other committees, including 15 women's sports committees, are elected by representatives of member institutions at the annual Convention.

- Publishes fact books in seven sports and records books in football and basketball.

- Collects, compiles and distributes the official statistics of college football, basketball and baseball.

Problem solver

- Conducts studies as a means of developing solutions to athletic programs.

- Represents the membership in legislative and regulatory matters on the state and Federal levels.

- Annually selects the College Athletics Top Ten and the Theodore Roosevelt ("Teddy") Award—the Association's highest honor.

- Administers an honors program which annually awards 80 postgraduate scholarships to recognize outstanding senior student-athletes who have excelled in the classroom as well as athletics. This scholarship is for \$2,000. The program has provided \$1,584,000 to 1,264 recipients since its inception in the 1964-65 academic year.

- Promotes and participates in international sports planning and competition through membership in the United States Olympic Committee, Amateur Basketball Association of the USA, Track and Field Association of the USA, and the United States Baseball, Gymnastics and Wrestling Federations.

- Maintains more than 80 full-time staff members at its national headquarters in Mission, Kansas, under the supervision of Executive Director Walter Byers.



NCAA national headquarters building in Mission, Kansas

Super Teams . . . and Super Stars

It has the makings of an ideal tournament punctuated by four super teams and four super stars.

When the NCAA Division II New England Regionals open Friday night at Stonehill College, the four best teams Sacred Heart University (24-5), Stonehill College (21-6), Southern Connecticut State College (21-7) and Springfield College (20-7) will battle for the New England Championship as well as moving on to the NCAA Division II quarterfinals.

Springfield and Sacred Heart open the two-day tourney, meeting for the first time in the history of either school. The 6 p.m. semi-final matchup will see the return of two teams who were in last year's regionals at Manchester, N.H.

In the other semi-final game (8 p.m.), host Stonehill will clash with Southern Connecticut in the Owls first trip ever to the NCAA's. The two met earlier (Jan. 7th) at Southern with the Owls edging the Chieftains in overtime, 77-72.

For Stonehill, it will mark the third straight NCAA bid in his four years as Stonehill coach, following a 10-year stint at Bryant College. At the present, both Sacred Heart and Stonehill have been hot. The Pioneers have won 15 of their last 17, while the Chieftains have won 16 of 17 since losing at Sacred Heart (98-83) on Jan. 9th. Both teams had 9 game win streaks this season.

Sacred Heart leads the way with 6 NCAA berths in the past 10 years, while both Stonehill and Springfield have each been selected three straight years. Springfield, which finished second to Stonehill in the Northeast 8, has had three consecutive 20-game win seasons. The Chiefs, coached by Ed Bilick, are led by guard Buddy Clarke, who has averaged 18.0 points a game and has 1,363 in his career, with a year to go. Clark is fifth on the all-time Springfield scoring list. Others to watch are junior forward Tyrone Settles (13.0) and Dan Czerapowicz (10.1). On the season, the Chiefs have averaged 72.5 points a game, while allowing 66.3, leading New England in that category most of the season.

The Pioneers of Sacred Heart have the most explosive offense in New England, averaging 86.2 points a game, while allowing 73.2. The Pioneers have the best front court in Division II, headed by All American candidate Keith Bennett, a 6-5 forward averaging 23.0 points a game. Bennett has 1,787 career points at Sacred Heart. Joining Bennett up front for Coach Dave Bikie are 6-3 senior forward Rudy Charles, who has averaged 8.1 points a game and forward Ron Wright with 16.8 and 11.1 rebounds. Both the 6-6 junior Wright and Charles have tallied over 1,000-career points for the Pioneers. Junior center Herb Camero has averaged 12.4 points and 8.3 rebounds a game. The high-octane Pioneer offense is led by sophomore point guard Steve Zazuri, averaging 7.5 assists a game.

The owls of Southern Connecticut are in the first NCAA post season tournament, but Coach Art Leary's team has as much talent as any of the other teams selected for the tournament. The Owls have a super guard in 6-1 junior Tony Gonsalves, who has 1,199-career points in two seasons. This year he's averaging 20.6 a game and was among the national leaders in field goal percentage all season long. He enters the tournament with a 59 percent shooting mark from the floor. Other double digit scorers for the Owls include Russell Brown, a 6-3 junior forward and 6-4 Nate Dickey with 13.6 and 8.0 rebounds to lead the Owls in that department. While beating Stonehill earlier in the year, the Owls lost at Springfield (89-68) and split a pair of identical 68-67 verdicts with Sacred Heart.

Host Stonehill is lead by All American guard candidate Bob Reitz, who moved into third place on the all-time scoring list at Stonehill with 1,611 points. This year he has averaged 25.1 points a game and has been in the top three nationally all season long. Reitz is 40 points away from breaking the all-time single season record held by three-time All American Mike Allocco, who has 2,399 points.

Reitz, who has 687 points this year, is joined by forwards Roiland Fiore (11.0) and Lorenzo Cheatom (10.2) in the double figure column. Cheatom, Stonehill's best floor shooter on the season leads the team in rebounds with 7.7. Fiore is second with 6.7 per game. The Chieftains, winners of 16 of their last 17, like to run as do the other teams in this tournament.

STONEHILL COLLEGE CHIEFTAINS



STONEHILL COLLEGE ROSTER

NO	NAME	CL	POS	AGE	HT	WT	HOMETOWN
15	Britto, Robert	Fr.	F	18	6-4	195	Providence, R.I.
35	*Cheatom, Lorenzo	Sr.	F	22	6-4	190	Buffalo, N.Y.
12	*Dean, Tom	Sr.	G	22	6-3	185	Brooklyn, N.Y.
32	*DeMacedo, Ollie	Sr.	F	22	6-5	190	Kingston, Ma.
31	*Dubuc, Maurice	So.	F	19	6-4	194	Mirimar, Fla.
22	Duff, Stephen	Fr.	C	17	6-8	195	Garden City, N.Y.
40	*Fiore, Roland	Jr.	F	20	6-4	215	Peace Dale, R.I.,
21	Fiore, Tony	Fr.	F	18	6-3	210	Peace Dale, R.I.
11	*Fisher, Jay	Jr.	G.	20	6-1	175	Pawtucket, R.I.
30	*Giglioli, Frank	Sr.	F	21	6-5	215	Brooklyn, N.Y.
44	Hood, Arthur	Fr.	C	18	6-7	200	Bellmore, N.Y.
34	*Johnson, Bob	So.	C	19	6-5	200	New Bedford, Ma.
43	*Lavelle, Tom	So.	G	19	6-2	190	Rye, N.Y.
25	*Reitz, Bob	Jr.	G	20	6-4	206	No. Kingston, R.I.
23	*Schmiemann, Tom	Sr.	G	21	6-2	195	Middle Village, N.Y.

*Denotes Letterman

CAPTAIN: TOM DEAN

HEAD COACH: TOM FOLLIARD

ASST. COACHES: KEVIN DUNNE, JOHN FEELEY, TED STEPHENS

The 1982 NCAA Regional Basketball Tournament marks the third straight appearance for the host Stonehill College Chieftains. Stonehill is currently 21-6 and were recently crowned Northeast-8 Conference Champions for the second consecutive year. Over the two year history of the Conference, the Chieftains have amassed an unblemished 22-0 record.

Stonehill is led by All-American guard candidate Bob Reitz, who moved into third place on the all-time scoring list at Stonehill with 1,611 points. This year he averaged 25.1 points a game and has been in the top three nationally all season long.

What is considered the best season in Stonehill College Basketball History, did not start out as everyone had hoped. Granted, the Chieftains won their first four games, they quickly went on an early season skid, as they dropped five of their next seven games, including three straight. Once the Chieftains returned from the Christmas Break, they got down to the business of winning again. The Chieftains started a nine game winning streak with a 51-50 win over A.I.C. The Chieftains continued this habit until they were upended by Merrimack College. Stonehill got over this loss immediately as they won their last seven games, all of which were Conference Games, which gave the Chieftains their second consecutive regular season and post season conference championships.

SOUTHERN CONNECTICUT COLLEGE OWLS



Front (left to right) -- asst. coach, George Braun; head coach, Art Leary; asst. coach, Bob Ruderman and trainer, Bill McCarthy.

Rear -- captain Jake Palluzzi, Tony Gonzalez, Daren Burrell, John Gildea, Nate Dickey, John Conlin, Sam Shaw, Kelvin Harris, Leo Cruz, Russell Brown, Rick Anello, Ben Payton, Rob Milone and manager Al Harps.



SOUTHERN CONNECTICUT ROSTER

NO	NAME	HT	WT	CL	POS	HOMETOWN
10	Russell Brown	6-3	185	Jr.	F	Stamford, Conn.
11	*Jake Palluzzi	5-10	170	Sr.	G	Branford, Conn.
12	*Tony Gonzalez	6-1	168	Sr.	G	New Britain, Conn.
14	Brian Worgan	6-1	170	Fr.	G	Middlebury, Conn.
20	Rick Anello	6-2	170	So.	G/F	New Fairfield, Conn.
22	*Ben Payton	5-11	164	So.	G	Danbury, Conn.
24	*John Conlin	6-5	205	Jr.	F	Woodside, N.Y.
30	*Nate Dickey	6-4	180	So.	F	Bridgeport, Conn.
32	Albert Watson	6-5	185	Fr.	F	Bellport, N.Y.
33	Sam Shaw	6-6	205	Jr.	C	Ft. Laud., Fla.
34	Tom Marlborough	6-0	170	Jr.	G	Auburn, Mass.
40	John Davis	6-7	190	So.	C	New Haven, Conn.
42	*John Gildea	6-3	190	So.	F	Bridgeport, Conn.
44	Ralph Kocsis	6-5	190	Fr.	F	Hopelawn, N.J.

Head Coach: Arthur J. Leary III

Captain: Jake Palluzzi

Assistant coaches: George Braun, Bob Ruderman

*Lettermen (6)

The finest year in SCSC basketball history has been climaxed by the Owls' first NCAA Division II Tournament berth. Southern finished its regular season with 21-7 record, the most wins in the history of the college.

Senior guard Tony Gonzalez has led a trio of double-figure scorers. The 6'1" sharpshooter has a 21.8 scoring average while hitting on 59% of his field goal attempts.

Junior Russell Brown follows with a 17.8 scoring average, with 3.8 rebounds per game. Nate Dickey, a 6'4" soph. leads the Owls in rebounding with 8 per game and has added 13.8 points per game.

Cap't. Jake Palluzzi is the Owls' playmaker and assist leader. The Owls' starting five is rounded out with either 6'5" junior John Conlin or 6'6" junior Sam Shaw at center.

SCSC won the regular season title in the New England College Basketball League and then lost the championship game to Sacred Heart, 68-67.

Against other NCAA tournament teams, the Owls have split four games. SCSC split with SHU by identical 68-67 scores, topped Stonehill 77-72 in OT and lost at Springfield, 89-68.

SCSC is presently ranked 18th nationally in Division II.

SACRED HEART UNIVERSITY PIONEERS



SHU Pioneers

SACRED HEART UNIVERSITY ROSTER

NO	NAME	POS	HT	WT	CL	HOMETOWN
4	Rick Clark	G	5-8	160	Jr.	New Britain, Ct.
10	* Steve Zazuri	G	6-0	165	So.	Fairfield, Ct.
14	Bob Kelly	G	6-2	180	Jr.	Bridgeport, Ct.
20	* Adolph Ellis	G	6-0	190	Jr.	Elmhurst, N.Y.
22	* Ray Zukowski	G	6-2	175	Jr.	Terryville, Ct.
24	* Mike Ashley	G	5-11	165	Jr.	Norwalk, Ct.
32	* Keith Bennett	F	6-5	185	Jr.	Stamford, Ct.
34	* Rhonie Wright	F	6-6	190	Jr.	Newark, N.J.
40	* Henry Moraes	F	6-4	180	Sr.	Bridgeport, Ct.
42	**Rudy Charles	G-F	6-3	190	Jr.	Goshen, N.Y.
50	* Herbert Camero	C	6-8	190	Jr.	Willemstead, Neth. Antilles

HEAD COACH: DAVE BIKE (4th YEAR, WON-55 LOST-29) 79-34 INCLUDING THIS SEASON.

ASSISTANT COACH: BOB JENKINS

TRAINER: PETER DIORIO

SPORTS INFO. DIRECTOR: SANDY SULZYCKI

*DENOTES LETTERMAN

**CAPTAIN

Quite a bit was expected of this years Sacred Heart University cage combine and the Pioneers have responded with a 24-5 record, including the championship of the recently concluded New England College Basketball League playoffs and a pair of regular season titles in the Bridgeport Lions Club Classic and the Hartwick Industrial Invitational.

The Pioneers, who have not had a losing season in their 17-year history, finished with a flurry and won 15 of their final 17 games in posting their tenth campaign with 20 or more victories, Their efforts did not go unnoticed as the Hearts were recognized in both New England and national polls throughout the season.

This marks the seventh time over a 13-year span that the Hearts have been selected to participate in the New England Regionals and twice (1977 and 1978) they have captured the Regional crown. Last year Sacred Heart dropped an 81-80 decision to New Hampshire College in the regional finals.

The play of no one individual can be attributed for this success but rather a total team effort which has been marked by the contributions of all 11 players. Highlighting the individual contributions has been the efforts of junior forwards Keith Bennett (1,787) and Rhonie Wright (1,253) and senior captain Rudy Charles (1,152), a trio that gives the Pioneers the distinction of having three 1,000-point plus scorers on the same combine. The maturation of junior center Herb Camero (12.4 points and 8.3 rebounds) has been one of the determining factors while sophomore playmaker Steve Zazuri continues to make the SHU offense jell. Valuable contributions off the bench have come from senior swingman Henry Moraes and Mike Ashley, Rick Clark and Ray Zukowski in the backcourt.

SPRINGFIELD COLLEGE CHIEFS



SPRINGFIELD COLLEGE ROSTER

NO	NAME	CL	POS	HT	WT	HOMETOWN
10	**Paul Daly	Sr.	G	5-9	155	Brooklyn, N.Y.
11	Leigh Gorman	Fr.	G	5-11	160	Flanders, N.J.
12	Gary Grumoli	Fr.	G	5-10	160	Holyoke, Ma.
14	David Greenberg	Jr.	G	6-0	170	Providence, R.I.
20	Dan Czerapowicz	So.	F	6-4	195	Northampton, Ma.
21	*Fred Davis	So.	F	6-3	180	Hartford, Ct.
41	Leon Damon	Jr.	F	6-4	200	Brooklyn, N.Y.
23	*Tyrone Settles	Jr.	F	6-2	190	Brooklyn, N.Y.
24	*Steve Parham	So.	F	6-5	180	Boston, Ma.
32	*Buddy Clarke	Jr.	G	6-1	185	Saratoga Springs, N.Y.
40	*Sterling Hammond	Jr.	C	6-4	195	E. Providence, R.I.
31	Steve Spiegel	Fr.	F	6-5	205	Leonia, N.J.

*Returning Lettermen

**Captain

HEAD COACH: DR. EDWARD BILIK

ASSISTANTS: RAY RICKETTS, HAROLD DROWNE

TRAINER: REGGIE DURR

MANAGER: RUSSELL THOMAS

Springfield College wrapped up its third straight 20-win season under head coach Ed Bilik, with a young team that includes only one senior -- Captain Paul Daly.

Daly, the team's point guard, set the all-time assist record at Springfield and directed the offense. Backcourt mate Buddy Clarke, the team's leading scorer and a first team All-New England guard, topped the 1,000 point scoring mark in only his junior year.

Once again the Chiefs led New England Division II teams in defense, led by 6'4" center Sterling Hammond and 6'2" Tyrone Settles, the team's leading rebounders.

Hammond and soph. Dan Czerapowicz did yeomen's work in filling the void left by graduated All-American Tony Jeffreys and Bob Powers. Czerapowicz led the team with a 59% field goal mark, followed by sixth man Steve Parham (58%) a 6'5" soph. who came on to average 19 points a game in the Northeast-8 Playoffs.

Meet the Coaches . . .

TOM FOLLIARD



Three NCAA post season tournament berths, two Northeast-8 Conference Championships, Coach of the Year honors, a No. 1 Coaches Poll regular season ranking in New England, a No. 12 National Ranking, a 21-6 season, a 73-36 four year record and a 247-118 career record certainly constitutes a coaching success story...so what does Tom Folliard do for an encore?

Obviously, when a man accomplishes so much in a short time, he's not the type to accept mediocrity. Folliard--the same man who took command of a Stonehill program that posted a 7-19 record four years ago--expects the 1981-82 bottom line to be more of the same...and possibly better.

The past two seasons have been highlighted by a contagious enthusiasm on the campus for basketball, one of Folliard's priority goals when he assumed command of an unstable program three years ago. Gone are the 7-19 seasons, gone are the negative comments, gone is the assuming attitude which once made basketball players a cult unto themselves on campus.

Now, there's an attitude among the college community that the basketball team is theirs, and the team has eliminated all the communication gaps of previous campus-team relationships. And, it doesn't hurt to win either, and that's just what the Chieftains have done during the Folliard years.

And, none of the accomplishments should be a surprise since Folliard's background has been nothing but successful basketball. He played for the Master--Joe Mullaney--at Providence College, starting on the 1962 Friar squad which won the National Invitational Tournament (NIT). During his ten years at Bryant College, Folliard was twice named NAIA New England Coach of the Year.

HEAD COACH DAVE BIKE

After guiding a young Sacred Heart team to a 20-9 record and the New England NCAA Division II Regional finals last year, Dave Bike has again shown his ability to keep the Pioneers in the limelight on the collegiate basketball scene as he concludes his fourth year as athletic director and head basketball coach.

The former Detroit Tiger farmhand of eight seasons has directed the Pioneers to a combined 79-34 record (.699) coming into his second straight appearance in the Regionals. As most observers of SHU basketball know, the Bridgeport, Ct. native is only the second basketball coach and athletic director in the 17-year history of Sacred Heart. J. Donald Feeley (now at Fairleigh Dickinson) guided the Pioneers for the first 13 seasons and the pair has combined for a ledger of 319 victories against only 145 defeats for a norm of .687 and seven NCAA post-season appearances over the last 12 seasons.

After gaining All-State and All New England honors in both basketball and baseball at Notre Dame High, Bike spurned cage offers from several colleges to sign a professional contract with the Detroit Tigers, spending eight years in the chain. During that span he received his Bachelor of Arts degree from Sacred Heart in 1969, while a student served as an assistant to Feely in 1966 and 1967. He also coached at Notre Dame compiling a three-year record of 50-18.

Retiring from baseball in 1972, Bike was lured out West where he was an assistant at Seattle University to Billy O'Connor, the former Canisius College standout, before eventually assuming his current position at Sacred Heart in 1979. Bike and his wife Judy reside in Durham, Ct. with their four children Kelly (12), Amy (10), Corey (7), and Keith (6).

Bike attributes much of SHU's success to assistant coach Bob Jenkins, a former SHU standout who is entering his fourth season. "A coach is only as good as his assistants and his players and I have been blessed with Bob Jenkins," noted Bike.



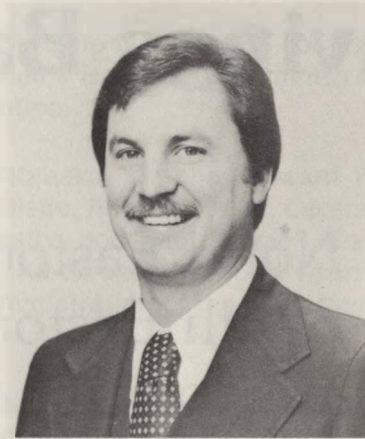
ART LEARY

Now in his fourth season as Southern Connecticut State College's head basketball coach, Art Leary's teams have a three-year won-lost record of 56-51. He succeeded Ed Brown to become the Owl's sixth head coach in the spring of 1978.

Leary, who resides in Hamden with his wife, Nancy, and sons, A.J. and Brendan, came to SCSC after seven seasons as an assistant coach with Burt Kahn at Quinnipiac College. While with the Braves, Leary established a reputation as one of the area's top recruiters as evidenced by Quinnipiac's success in Division II. Leary helped the Braves to a pair of NAIA New England championships, three ECAC Division II - III titles and one NCAA Division II regional tournament.

A former basketball captain at Quinnipiac, Leary was elected to the Braves' basketball hall of fame and is Quinnipiac's fifth all-time scoring leader with 1,278 points. He also helped his teams to NAIA regional tournaments in his junior and senior seasons.

The Meriden native, who is an instructor in SCSC's Physical Education Department, was basketball captain and most valuable player at Platt High. As a senior he earned All-CCIL and honorable mention All-State honors. He is presently a member of the National Association of College Basketball Coaches public relations committee.



COACH EDWARD BILIK

Dr. Edward Bilik has served as head basketball coach at Springfield College, the birthplace of basketball, since 1967. With 253 career victories he is the winningest coach ever at Springfield.

A recipient of both Bachelor's and Master's degrees at Springfield College, Bilik has taken five of his teams into NCAA post-season tournaments, including last year's contingent. The Chiefs finished with a 20-9 record last season, their second straight 20-win season, to raise Bilik's overall record at Springfield to 253 wins, 152 losses.

Named "New England Coach of the Year" in 1979-80 after leading his team to the NCAA Division II finals, Coach Bilik previously guided the Chiefs to three consecutive NCAA playoffs between 1968-1870.

In 1970 the Endicott, N.Y. native was named one of America's "Outstanding Young Men" by the United States Junior Chamber of Commerce. In 1972 he was named an Outstanding Educator of America.

After graduating from Springfield in 1957, Bilik was named athletic director, basketball and baseball coach at Seton High School in Endicott, N.Y. In 1959, he returned to Springfield as assistant basketball coach and golf coach. He earned his master's degree from Springfield in 1962 and doctorate from Oregon in 1966.

Coach Bilik is respected on both the national and international level, having served on the National Rules Committee for a number of years and having conducted clinics around the world.

Bilik has served as Research Chairman of the Basketball Rules Committee of the USA and Canada for ten years and was Assistant Basketball Rules Editor for two years. He has conducted coaching clinics in Yugoslavia, Greece, Curacao, Aruba, the Dominican Republic and Venezuela, and he presented a position paper in Valencia, Venezuela at the Sixth Pan American Basketball Congress. He was a featured speaker and lecturer at the South American Coaches Conference in Caracas last summer.

Bilik has also worked with a number of foreign coaches as part of Springfield College's international exchange program. National basketball coaches from Venezuela, Chile, Taiwan and the People's Republic of China have all studied under Ed Bilik's direction.



North Easton Savings Bank

North Easton
South Easton
Norton

"Your Family Financial Service Center"



606 Washington Street
238-1955 or 238-3366

Join us for a bite after the game

Eat-In or
Take-Out
The Poitras
Family
Celebrating
28 Years of
serving
Eastham,
Cape Cod and
now EASTON
as well.
Live
Entertainment
open Tues.
thru Sun.

BEST WISHES TO A GREAT COLLEGE!

GOOD LUCK IN THE TOURNAMENT.

PETE MARCIANO

339-2945

339-2946

MARCIANO SPORTING GOODS, INC.

363 N. Main Street
Mansfield, Mass. 02048

PETER N. MARCIANO

Good Luck Chieftains!

Home of Stonehill Student's
Party Needs.

HENNESSEY'S PACKAGE STORE

WASHINGTON & CENTRAL STREET
SOUTH EASTON, MASS. 02375

BARRY PEDELL

238-2628

NCAA DIV. II NATIONAL AND REGIONAL COMMITTEE

The National Collegiate Division II Men's Basketball Championship is under the control, direction and supervision of the six-member NCAA Division II Men's Basketball Committee, which is elected by the NCAA membership at the annual Convention.

Committee members include Don Leahy, University of Nebraska, Omaha; Edward P. Markey, St. Michael's College; James R. Spalding, Bellarmine College; Bob Moorman, Central Intercollegiate Athletic Conference; Bud Elwell, Gannon University; and Paul Rundell, San Francisco State University. Rundell is chair of the committee. NCAA Director of Men's Championships Jerry Miles works closely with the committee in the administration of the championship and related matters.

Selection of the participating teams and the conduct of the championship competition are the responsibility of the committee. The success of the previous championship competition proves the outstanding work and dedication of the committee.

In 1975, the NCAA and its Divisions II and III Men's Basketball Committees started the weekly national ratings for member institutions. The top teams in each region are ranked by the division committees. Teams are rated according to their won-and-lost records and strength of schedules.

"We conduct national conference calls every week throughout the basketball season to rank the teams," said Chair Rundell. "The goal is to have the ratings accepted in all areas in which there is an interest in Division II and Division III basketball. We believe the polls are providing greater attention and exposure for Division II and Division III Basketball."

NEW ENGLAND N.C.A.A. REGIONAL BASKETBALL COMMITTEE

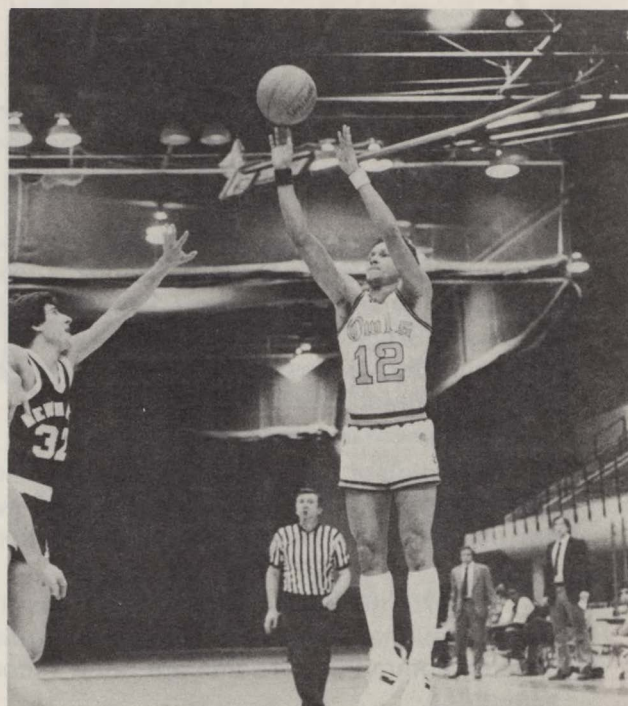
Edward P. Markey, St. Michael's College, Chair
Gordon F. McCullough, University of Hartford
William M. Moore, Central Connecticut State College
Milton J. Piepul, American International College
Edward S. Steitz, Springfield College
Theodore S. Paulauskas, St. Anselm College, alternate

Paul Rundell --- Chair, N.C.A.A. Div. II, Men's Basketball Committee

Jerry A. Miles --- Director of Men's Championships

... Showcasing the Super Stars

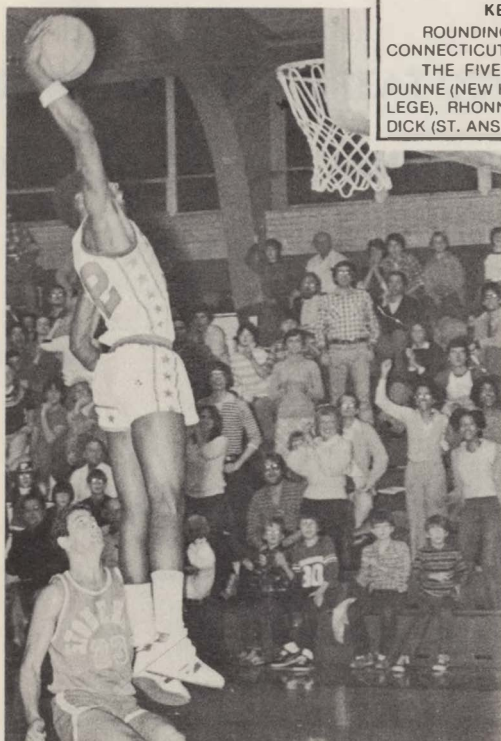
Collectively they have scored 5,960 points



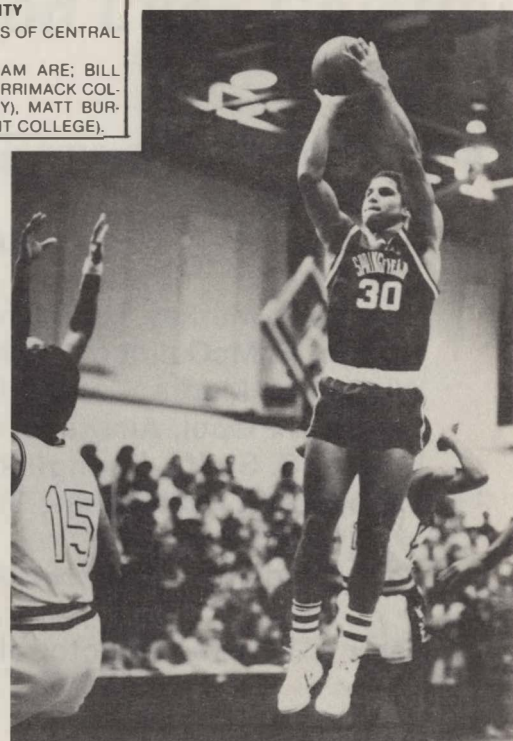
BOB REITZ —
Junior Guard
1,611 career points. . .

TONY GONZALEZ —
Senior Guard
1,199 career points. . .

SELECTED THIS WEEK
THE ANNOUNCEMENT CAME LATE TUESDAY AFTERNOON. THE VOTES WERE TALLIED AND THE NATIONAL ASSOCIATION OF BASKETBALL COACHES NAMED THEIR NEW ENGLAND ALL-DISTRICT TEAM.
FOUR OF THE PLAYERS IN THIS WEEKENDS NCAA NEW ENGLAND REGIONAL TOURNAMENT WERE NAMED TO THE FIRST TEAM, THEY INCLUDE:
BOB REITZ--STONEHILL COLLEGE
BUDDY CLARKE--SPRINGFIELD COLLEGE
TONY GONZALEZ--SOUTHERN CONNECTICUT STATE COLLEGE
KEITH BENNETT--SACRED HEART UNIVERSITY
ROUNDING OUT THE FIRST TEAM WAS STEVE AYERS OF CENTRAL CONNECTICUT STATE COLLEGE.
THE FIVE PLAYERS NAMED TO THE SECOND TEAM ARE; BILL DUNNE (NEW HAMPSHIRE COLLEGE), JOE DICKSON (MERRIMACK COLLEGE), RHONNIE WRIGHT (SACRED HEART UNIVERSITY), MATT BURDICK (ST. ANSELM COLLEGE) AND PAUL BERLO (BRYANT COLLEGE).



KEITH BENNETT — **Junior Forward**
1,787 career points



BUDDY CLARKE — **Junior Guard**
1,363 career points. . .

SACRED HEART UNIVERSITY

Sacred Heart University was founded in 1963 by the Most Reverend Walter W. Curtis, Bishop of Bridgeport. He visualized an institution of higher learning, rooted in the Catholic intellectual heritage and reflecting the ecumenical thrust of post Vatican II.

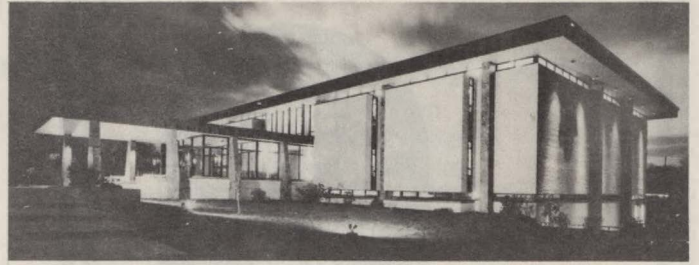
Located in suburban Fairfield, Ct. and easily accessible from all of Connecticut, Sacred Heart is the area's first non-residential university.

Everyone commutes—a tremendous saving in educational costs for a total of 4,200 students, including full-time (1,500), part-time and Continuing Education. This enrollment represents a diversified age range and ethnic cultures and is the largest student body in the 18-year history of the University.

The University is also unique in that since its inception it has always been staffed and administered primarily by lay people, who reflect in their diversity the ecumenical vision of its founder.

The University offers a Baccalaureate degree-Bachelor of Arts or Bachelor of Science—with majors in 22 areas of concentration while the Department of Education offers training and certification in Early Childhood, Elementary and Secondary Education as well as a special program in Bi-Lingual education for all three levels.

Dr. Thomas P. Mellady is currently on leave of absence as president and is serving as Assistant Secretary of Education for Post Secondary Education in Washington, D.C. Dr. Anthony Pinciario, a distinguished scholar and administrator, is now serving as acting president.



SOUTHERN CONNECTICUT STATE COLLEGE

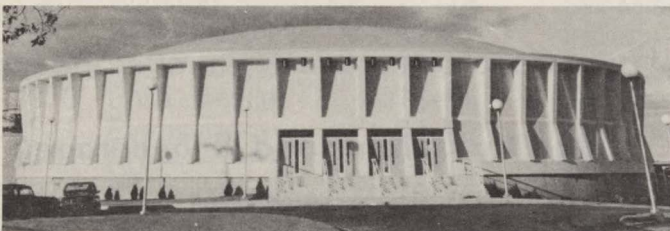
Southern Connecticut State College offers undergraduate and graduate degree programs in the arts and sciences and professional studies in education, library science, nursing, recreation and social work.

Since its founding in 1893, the College has emphasized effective and stimulating teaching. The Connecticut General Assembly, through appropriations to the College, has made possible a faculty of outstanding scholar-teachers; programs of study in harmony with present and future trends; a physical plant with teaching equipment among the best in the United States; and an excellent library collection.

The College recognizes also that an undergraduate's education consists of more than formal classroom training. It must include other experiences provided through participation in a variety of student activities. It is through the offering of both formal classroom work and informal student activities that the College endeavors to accomplish its mission not only of developing a student's intellect but also of building a moral and ethical character to meet the demands of constructive citizenship.

The College maintains an outstanding and comprehensive intercollegiate athletic program for men and women, recognizing the needs of students in individual and team sports. For women, the College's intercollegiate programs include cross country, field hockey, tennis, volleyball, basketball, swimming, gymnastics, track and field and softball and have produced many distinguished athletes and coaches, including two members of the 1976 U.S. Olympic women's basketball team, which won the silver medal in Montreal.

For men, intercollegiate programs are offered in soccer, cross country, football, golf, tennis, wrestling, basketball, gymnastics, swimming, track and field (indoor and outdoor) and baseball. The College has had more individual NCAA Division II national champions than any other institution east of the Mississippi, currently ranking fourth in the nation. Southern teams have also won three NCAA Division II team championships in gymnastics and the College has had several Olympic performers including 1976 floor exercise bronze medalist Peter Kormann.



SPRINGFIELD COLLEGE

Education for careers of service in the human helping professions is now recognized as of vital importance in our culture, and that's what Springfield College is all about. A combination of classroom experience and active community participation is the basic approach of the College. The emphasis is on the education of the total person — the spirit, the mind, intercultural, interracial and interreligious. This distinctive educational philosophy is known as Humanics.

Founded in 1885, Springfield college has educated more than 16,000 people who are at work throughout the United States and 62 nations of the world. They hold professional positions as teachers, physical educators, community recreation leaders, educational administrators, Boy and Girl Scout executives, YMCA and YWCA executives, coaches, guidance counselors, social workers and medical technicians. They are "people helpers". Today, Springfield is a small, private, nonsectarian, coeducational institution with an undergraduate enrollment of just over 2,000.

The Springfield College campus, while located in the geographical center of Springfield, Massachusetts, is approximately 2 miles from the business district of the city of approximately 160,000 people. Surrounded on three sides by residential neighborhoods, the main campus is also bordered by Lake Massasoit. Twenty five buildings comprise our primary campus with such major facilities as our new \$5.3 million physical education complex, the Art Linkletter Natatorium — one of the finest indoor aquatic facilities in the country — the 111,000-volume Babson Library, Bemis Science Center, Towne Student Health Center, Dana Fine Arts Building and many more.

In addition to our main campus, Springfield is fortunate to have an additional 81 acres of woods and fields known as East Campus. About a mile from the main campus, this area provides an ideal setting for work in conservation, camping, recreation and natural sciences. It also includes a waterfront area for swimming and boating.

With the addition of three more women's sports last year — soccer, golf and cross country — Springfield college now participates in 25 varsity sports (13 men's, 12 women's). Two of these, basketball and volleyball, were invented by Springfield people.



**Plymouth-
Home
National
Bank**

17 Offices throughout Plymouth County, Mass.
Member FDIC

EPICUREAN CATERERS

*Congratulations to the Stonehill Cheiftains
an all teams in NCAA Tournament!*

*Good Luck
to*

TOM FOLLIARD

and the entire

STONEHILL TEAM

*From
All of the People
at*

LIBERTY PRINTING CO.

GEORGE'S CAFE

Rte. 123

Where Coaches meet and eat after the game

Quality Italian food & beverage!

Coaches of Team Champions

1957	Lee Pfund, Wheaton
1958	Duane Clodfelter, South Dakota
1959	Arad McCutchan, Evansville
1960	Arad McCutchan, Evansville
1961	Ray Mears, Wittenberg
1962	Jim Phelan, Mount Saint Mary's
1963	Jim Iverson, South Dakota State
1964	Arad McCutchan, Evansville
1965	Arad McCutchan, Evansville
1966	Guy Strong, Kentucky Wesleyan
1967	C.E. Gaines, Winston-Salem State
1968	Bob Daniels, Kentucky Wesleyan
1969	Bob Daniels, Kentucky Wesleyan
1970	Herb Magee, Philadelphia Textile
1971	Arad McCutchan, Evansville
1972	Charles Meir, Roanoke
1973	Bob Jones, Kentucky Wesleyan
1974	Nathaniel Frazier, Morgan State
1975	Sonny Allen, Old Dominion
1976	Don Zech, Puget Sound
1977	Ron Shumate, Tenn-Chattanooga
1978	John Chaney, Cheyney State
1979	Bill Jones, North Alabama
1980	Dave Robbins, Va. U
1981	Hal Wissell

Outstanding Player Award

Mel Peterson, Wheaton
Ed Smallwood, Evansville
Hugh Aherling, Evansville
Ed Smallwood, Evansville
Don Jacobsen, South Dakota State
Ron Rohrer, Sacramento State
Wayne Rasmussen, South Dakota State
Jerry Sloan, Evansville
Jerry Sloan, Evansville
Sam Smith, Kentucky Wesleyan
Earl Monroe, Winston-Salem State
Jerry Newsom, Indiana State
George Tinsley, Kentucky Wesleyan
Ted McClain, Tennessee State
Don Buse, Evansville
Hal Johnston, Roanoke
Mike Williams, Kentucky Wesleyan
Marvin Webster, Morgan State
Wilson Washington, Old Dominion
Curt Petersen, Puget Sound
Wayne Golden, Tenn-Chattanooga
Andrew Fields, Cheyney State
Perry Oden, North Alabama
Keith Valentine, Va. U
John Ebeling, Fla. So.

DIVISION II NATIONAL CHAMPIONSHIPS

Year	Champion	Score	Runner-Up	Third Place	Fourth Place
1957	Wheaton	89-65	Ky. Wesleyan	Mt. St. Mary's	Los Angeles State
1958	South Dakota	75-53	St. Michael's	Evansville	Wheaton
1959	Evansville	83-67	SW Missouri	No. Carolina A & T	Los Angeles State
1960	Evansville	90-69	Chapman	Ky. Wesleyan	Cornell College
1961	Wittenberg	42-38	SE Missouri	So. Dakota State	Mt. St. Mary's
1962	Mt. St. Mary's	58-57†	Sacramento State	So. Illinois	Nebr. Wesleyan
1963	So. Dakota State	44-42	Wittenberg	Oglethorpe	So. Illinois
1964	Evansville	72-59	Akron	No. Carolina A & T	Northern Iowa
1965	Evansville	85-82†	So. Illinois	North Dakota	St. Michael's
1966	Ky. Wesleyan	54-51	So. Illinois	Akron	North Dakota
1967	Winston-Salem St.	77-74	SW Missouri	Ky. Wesleyan	Illinois State
1968	Ky. Wesleyan	63-52	Indiana State	Trinity (Tex.)	Ashland
1969	Ky. Wesleyan	75-71	SW Missouri	Vacated	Ashland
1970	Phila. Textile	76-65	Tennessee State	Calif. Riverside	Buffalo State
1971	Evansville	97-82	Old Dominion	Vacated	Ky. Wesleyan
1972	Roanoke	84-72	Akron	Tennessee State	E. Michigan
1973	Ky. Wesleyan	78-76†	Tennessee State	Assumption	Brockport State
1974	Morgan State	67-52	SW Missouri	Assumption	New Orleans
1975	Old Dominion	76-74	New Orleans	Assumption	Tennessee State
1976	Puget Sound	83-74	Tenn. Chattanooga	Eastern Illinois	Old Dominion
1977	Tenn. Chattanooga	71-62	Randolph-Macon	North Alabama	Sacred Heart
1978	Cheyney State	47-40	Wis.-Green Bay	Eastern Illinois	Florida Tech.
1979	North Alabama	64-50	Wis.-Green Bay	Cheyney State	Bridgeport
1980	Va. Union	80-74	N.Y. Tech	Florida State	North Alabama
1981	Florida, Southern	73-68	Mt. St. Mary's	Cal Poly SLO	Wisconsin - Green Bay

How They Got Here

SOUTHERN CONNECTICUT

W	79-66	*Bridgeport
L	78-82	*Central Conn.
W	67-55	Hartford
W	75-71	#Bridgeport
W	81-75	St. Anselm's
W	66-60	@St. Michael's
W	75-72	@Bentley
W	77-72	Stonehill (OT)
L	54-59	AIC
W	66-64	#Lowell (OT)
W	79-83	Quinnipiac
W	75-60	U Mass-Boston
W	78-52	New Haven
W	75-73	#Quinnipiac
W	82-50	Western Conn
W	77-65	Kings Point
W	104-74	Eastern Conn.
L	68-89	Springfield
L	82-83	N.H. College
W	91-75	Boston State
W	87-75	#New Haven
W	72-71	Central Conn.
W	87-82	Southampton
W	68-67	Sacred Heart (OT)
W	77-48	R.I. College
L	66-68	Merrimack
W	80-63	**N.H. College
L	67-68	**Sacred Heart

*Conn. Travel Services Classic
 °Bentley Holiday Festival
 #New England College Basketball League
 **NECBL Tournament

Stonehill

W	68-48	St. Michael's College
W	91-79	Bridgeport University
W	97-86	Brown University
L	72-86	University of Rhode Island
L	67-83	Boston College
W	91-81	New Hampshire College
W	92-90	New Haven University
L	74-75	Quinnipiac College
L	72-77	So. Conn. State
L	83-98	Sacred Heart University
W	51-50	American Int. College
W	88-71	University of Hartford
W	112-84	Assumption College
W	54-53	Central Conn. State
W	70-62	Bentley College
W	73-57	Springfield College
W	76-69	Bryant College
W	83-66	American Int. College
W	84-75	St. Anselm's College
L	74-81	Merrimack
W	65-55	Springfield College
W	60-59	Hartford University
W	77-76	Assumption College
W	92-86	Bentley College
W	99-75	Bryant College
W	76-66	*University of Hartford
W	74-65	*Springfield College

*NE - 8 Playoffs

Sacred Heart

L	82-79	AIC
W	81-72	Quinnipiac
W	118-72	*Mercy
W	53-39	*LeMoynes
W	97-85	★NHC
W	81-60	★Hartwick
W	80-55	Adelphi
W	87-73	C.W. Post
W	100-75	✓UMass - Boston
W	80-74	✓Clark
L	95-86	✓UNH
L	69-67	UMBC
W	98-83	Stonehill
W	92-78	Hartford
W	96-79	Assumption
W	98-86	UNH
W	90-86	St. Michaels
W	84-64	St. Anselm
L	80-78	CCSC
W	70-68	USMMA
W	130-99	Mercy
W	82-61	Merrimack
W	91-74	NHC
L	68-67	SCSC
W	95-88	UB
W	79-66	Lowell
W	83-64	**Quinnipiac
W	93-71	**UB
W	68-67	**SCSC

* - UB Lions Classic
 ★ - Harteick Invt.
 ✓ - SHU Holiday Classic
 ** - NECBL Playoffs

Springfield

W	104-76	★ Western New England
W	57-56	★ AIC
W	88-66	Lowell
W	57-49	St. Anselm
W	67-65	Central Conn.
L	66-72	Merrimack
W	64-45	WPI
W	75-65	Clark
W	76-67	Williams
W	74-50	*Bryant
W	64-60	*Bentley
W	76-47	*Hartford
W	81-75	Bridgeport (OT)
L	57-73	*Stonehill
W	76-72	*Assumption
W	86-75	*Hartford
W	89-68	Southern Conn.
W	55-54	*AIC
W	81-71	*Assumption
L	55-65	*Stonehill
L	70-75	*Bryant
W	71-69	*Bentley
L	71-78	St. Michael's
L	59-73	*AIC
W	91-77	✓Bentley
W	83-73	✓Assumption
L	65-74	✓Stonehill

★ Mayor's Tournament
 *Northeast-8 Games (8-4)
 ✓ Northeast-8 Playoff Game

CARLTON HOUSE

Home of the Tournament Teams

*Serving Fine Food and
Beverages for over
43 years.*

Four Hundred RESTAURANT

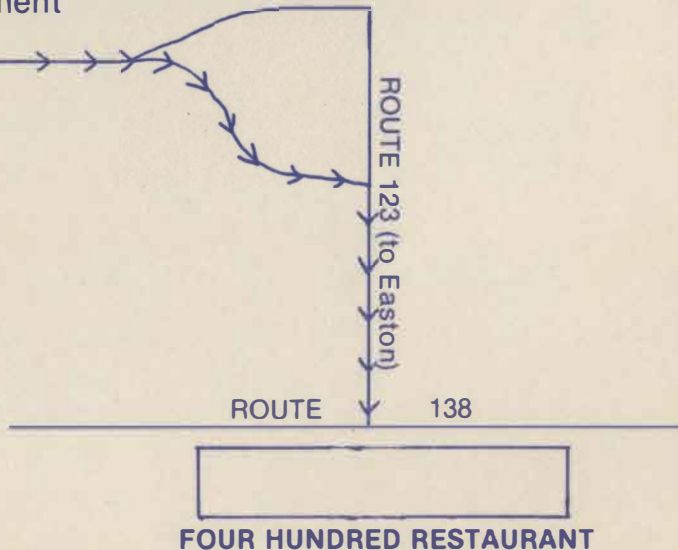
West Fleet Lounge - Entertainment

MERKERT
GYMNASIUM

TOURNAMENT SPECIAL
1 LB. PRIME RIB \$8.95

*Luncheons from 11:30 AM
Dinners 'till 11:30 PM*

Junction of Routes 123 & 138
South Easton, MA 02375
617-238-2400



1982 National Collegiate Division II Men's Basketball Championship Bracket

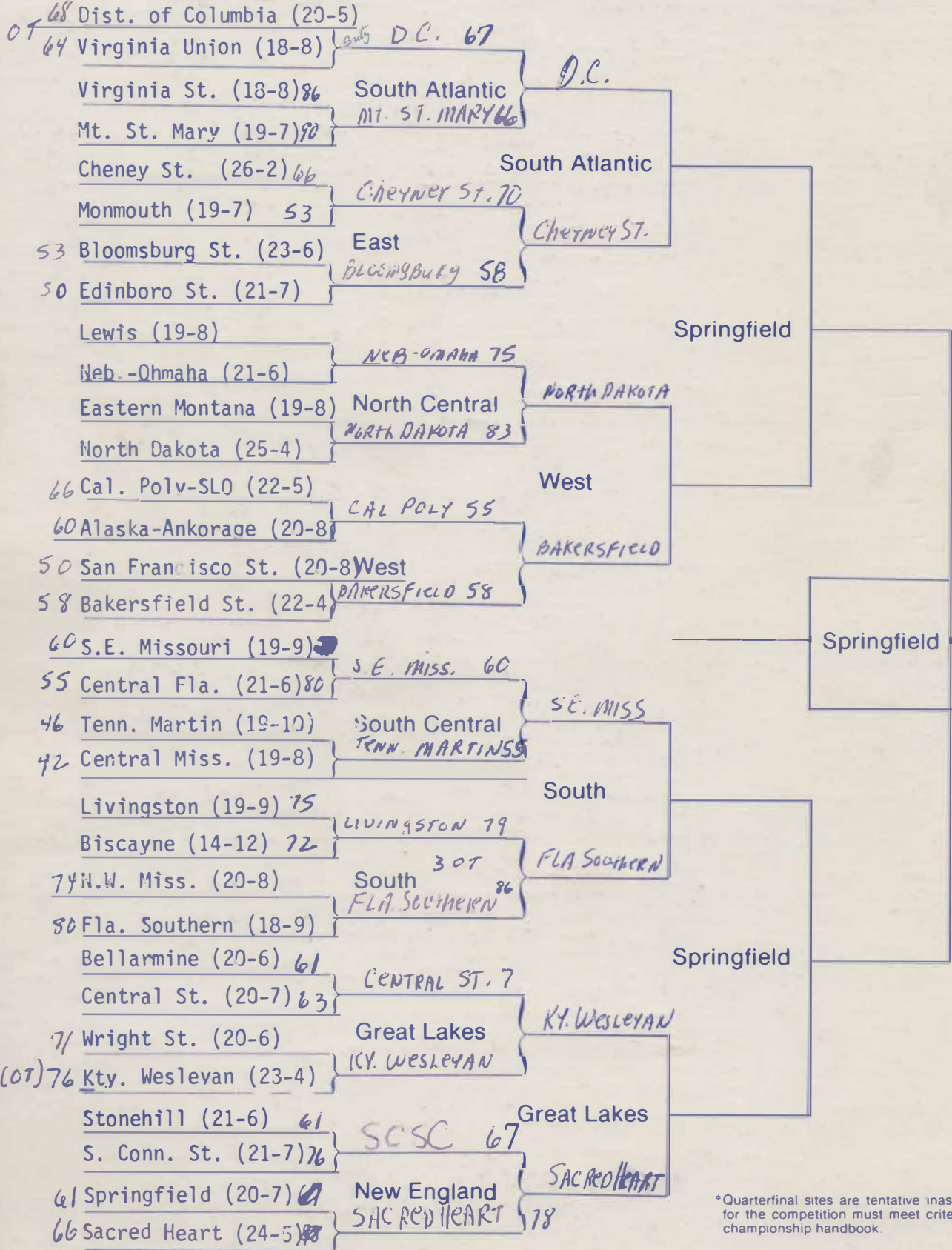
BR
TG
RC
KB
RW

203 960-2276

Regionals
March 4-6

Quarterfinals*
March 12 or 13

Finals
March 19-20



*Quarterfinal sites are tentative inasmuch as sites for the competition must meet criteria outlined in championship handbook.

FINAL NCAA DIVISION II POLL

TOP TWENTY

March 2, 1982

1.	Cheyney State	26-2
2.	North Dakota	25-4
3.	District of Columbia	20-5
4.	<u>KENTUCKY WESLEYAN COLLEGE</u>	<u>23-4</u>
5.	California Bakersfield	22-4
	Sacred Heart	24-5
7.	Bloomsburg State	23-6
8.	Stonehill	21-6
9.	Nebraska-Omaha	21-6
10.	Cal Poly San Luis Obispo	22-5
11.	Florida Southern	18-9
12.	Central Florida	21-6
13.	Mount Saint Mary's	19-7
14.	Alaska-Anchorage	20-8
15.	Virginia State	18-8
16.	Edinboro State	21-7
17.	Lewis University	19-8
18.	Southern Connecticut	21-7
19.	Central State University	20-7
20.	Eastern Montana	19-8