



Sacred Heart
UNIVERSITY

Sacred Heart University
DigitalCommons@SHU

Librarian Publications

Sacred Heart University Library

8-2015

Once Again, My Epiphyllum: Hope, Joy and Excitement

Wenling Ma

Follow this and additional works at: https://digitalcommons.sacredheart.edu/library_staff



Part of the [Plant Biology Commons](#)

Recommended Citation

Ma, Wenling, "Once Again, My Epiphyllum: Hope, Joy and Excitement" (2015). *Librarian Publications*. 36.
https://digitalcommons.sacredheart.edu/library_staff/36

This Essay is brought to you for free and open access by the Sacred Heart University Library at DigitalCommons@SHU. It has been accepted for inclusion in Librarian Publications by an authorized administrator of DigitalCommons@SHU. For more information, please contact santoro-dillond@sacredheart.edu.

Once Again, My Epiphyllum

Hope, Joy and Excitement by Wenling Ma



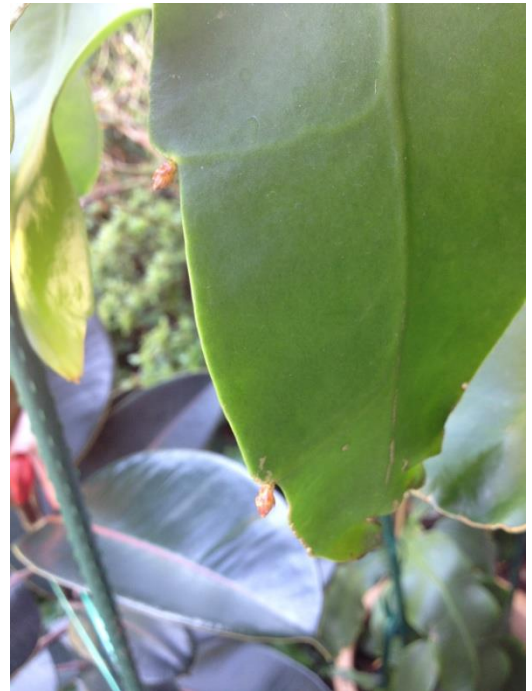
Day 1: August 13, 2015

Is this the new bud or new leaf?

Exactly one month ago I had the opportunity of feasting my eyes on the first two Epiphyllum buds in my life. Since then it has become a routine for me to gaze at the plant in the morning and afternoon. What will it do after its first flowering?

Is it possible that the Epiphyllum is going to give me a second chance to see its flowering within a year?

Let's see how it grows tomorrow. We might be able to figure out if it is a new bud or a new leaf.



Day 2: August 14, 2015



The first one I noticed yesterday does not change much. (See the left photo)

But I see three more, two in one leaf. There are four in total.

They might be leaves. They couldn't be flower buds, right? I just watched in awe the first-ever two flowering 17 days ago.

How lucky I would be if they are buds, and four more?!

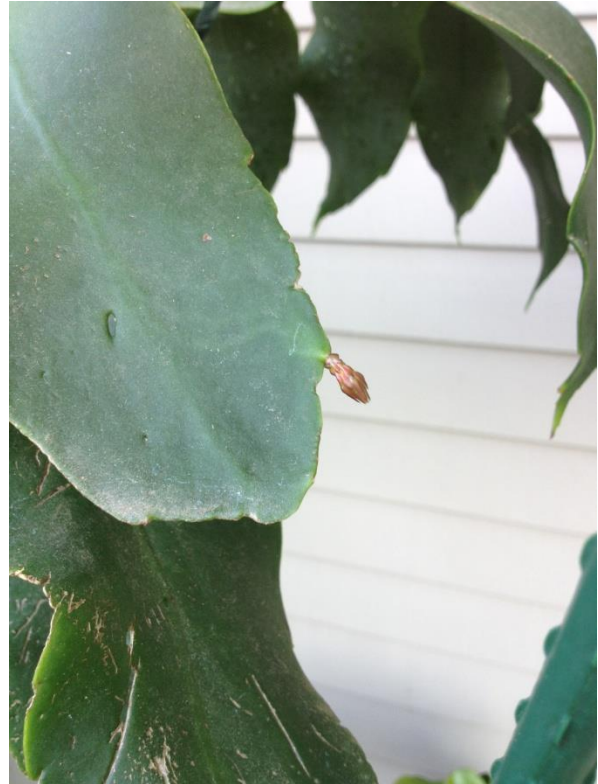
Let's see how they change tomorrow.



Day 3: August 15, 2015

See the tiny petals forming around the round body. No doubt. They are buds!

Oh, boy, am I going to see them bloom again?

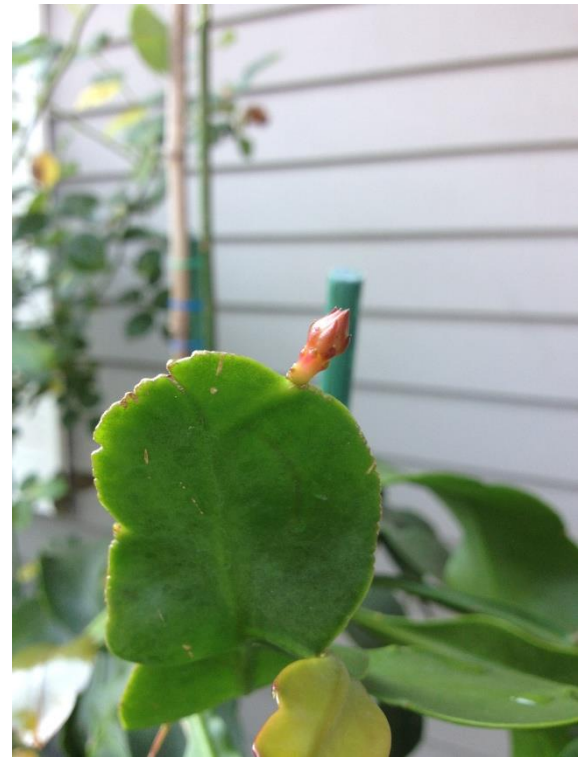


Day 4: August 16, 2015



They start to grow quick. See the tiny petals growing on the first one I spotted three-day ago.

How proud of this middle one is sitting on the top of the leaf?! It points to the sky.



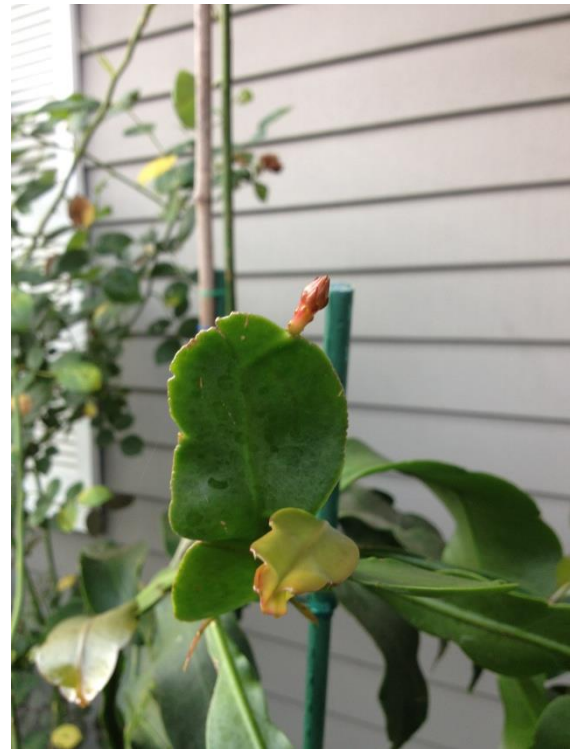
It looks like the upper one in the same leaf does not grow. It might not make it. They are competing for the nutrition.



Day 5: August 17, 2015

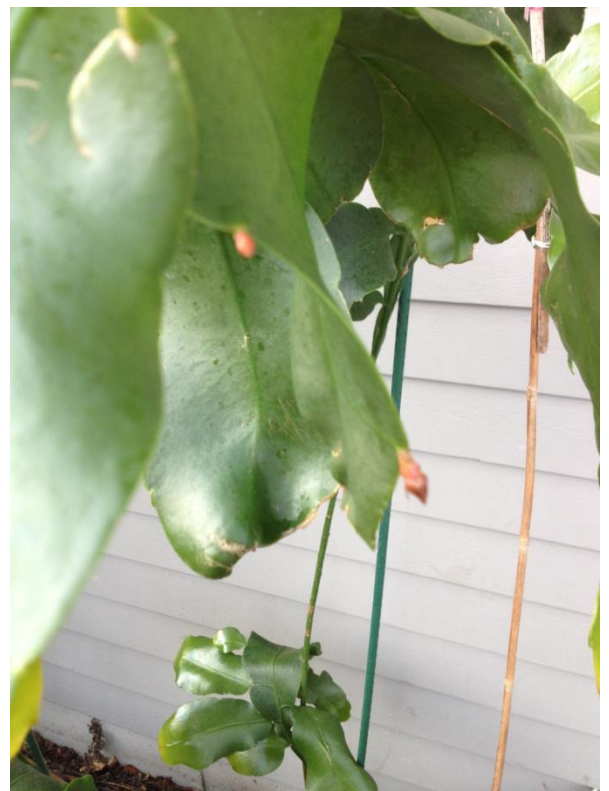


These two are thriving. You can see petals opening up clearly from the left one.



But look at this picture carefully: the upper one is struggling to survive. Two buds are growing on the same leaf. Only one can make it.

It's nature's selection.



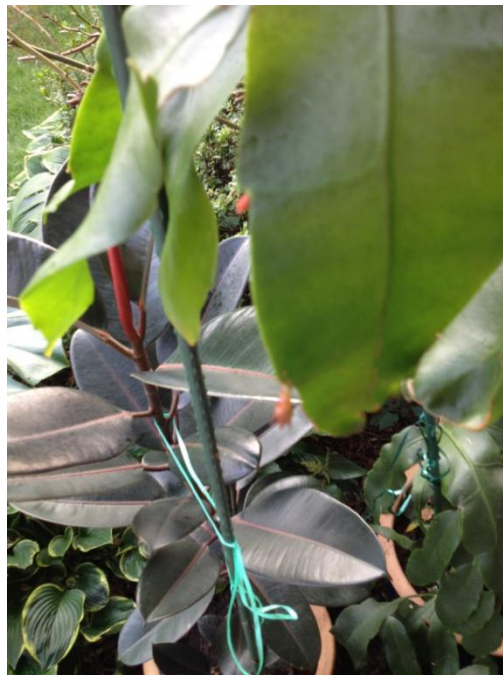
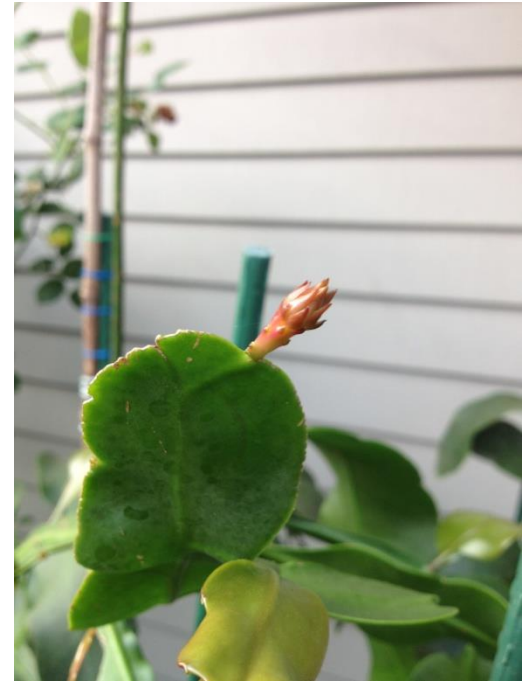
Day 6: August 18, 2015



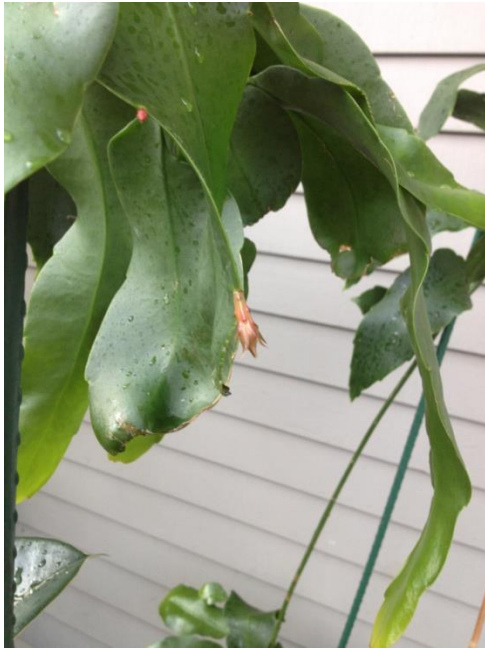
See the weathered leaf and the proud buds.

All three strong ones are showing petals, but the upper one on the same leaf does not grow much.

Don't want to see it fade away.

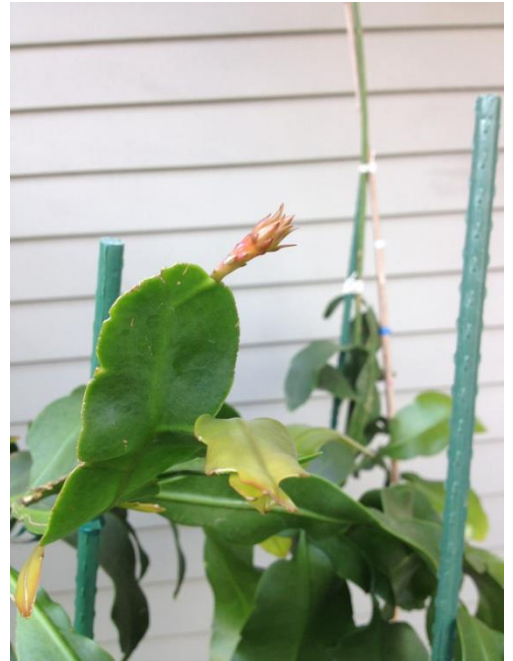


Day 7: August 19, 2015

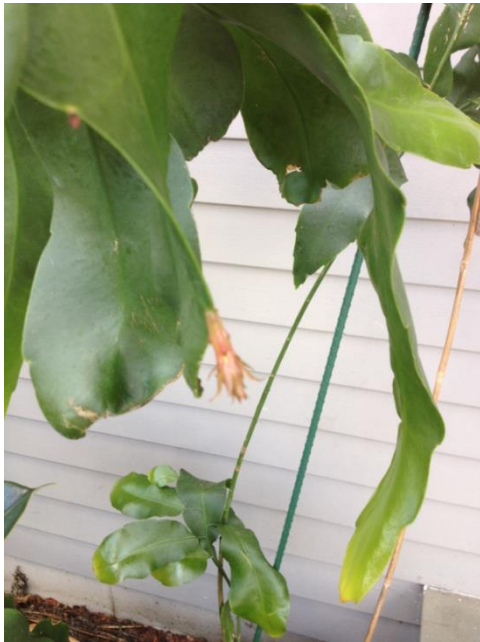


Now you can see clearly, the upper one of the two which grow on the same leaf stops growing while the lower one gets the most nutrition.

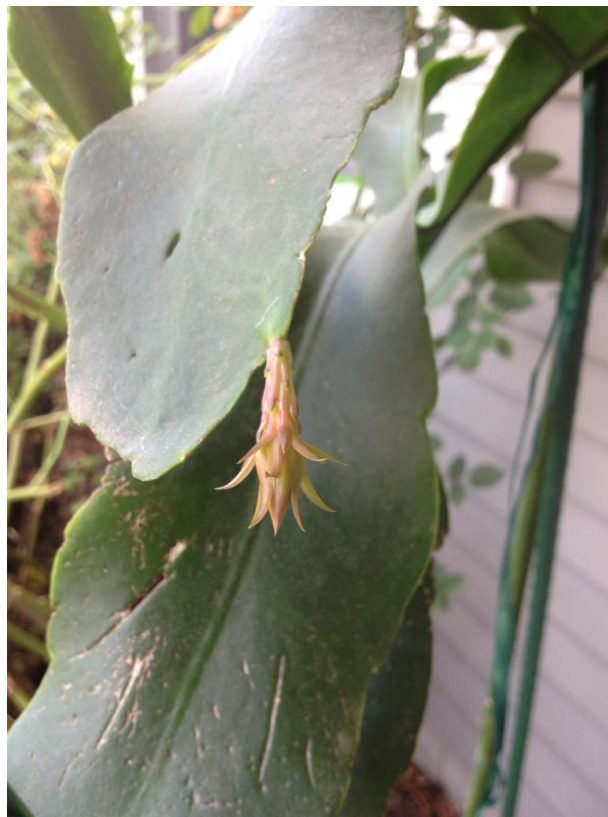
The other two growing on two separated leaves are thriving.



Day 8: August 20, 2015



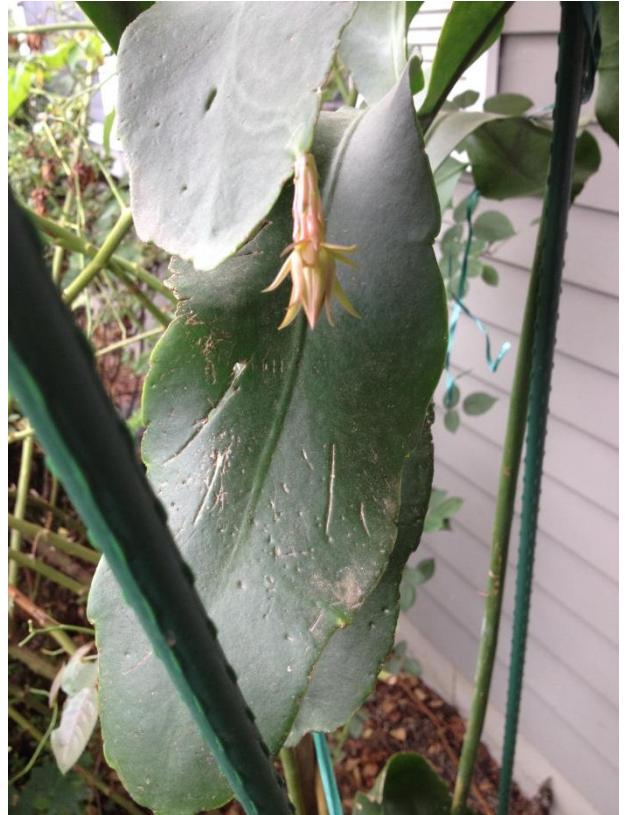
See the big change in one day?! How do they grow so fast?



Day 9: August 21, 2015



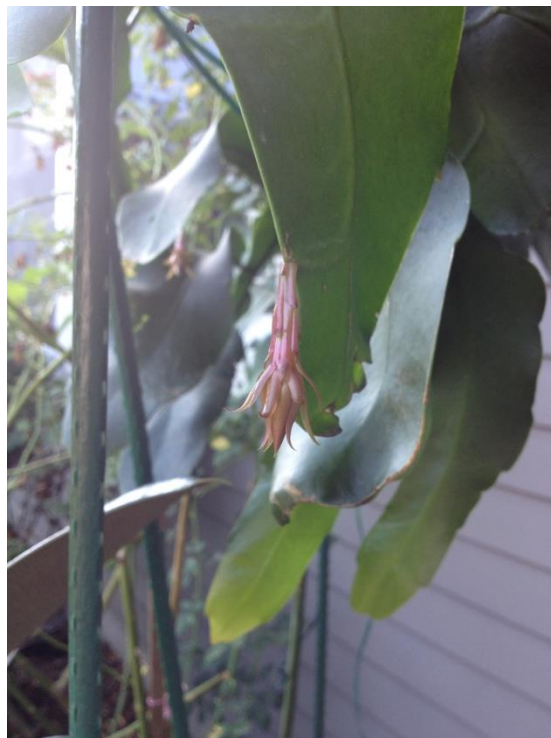
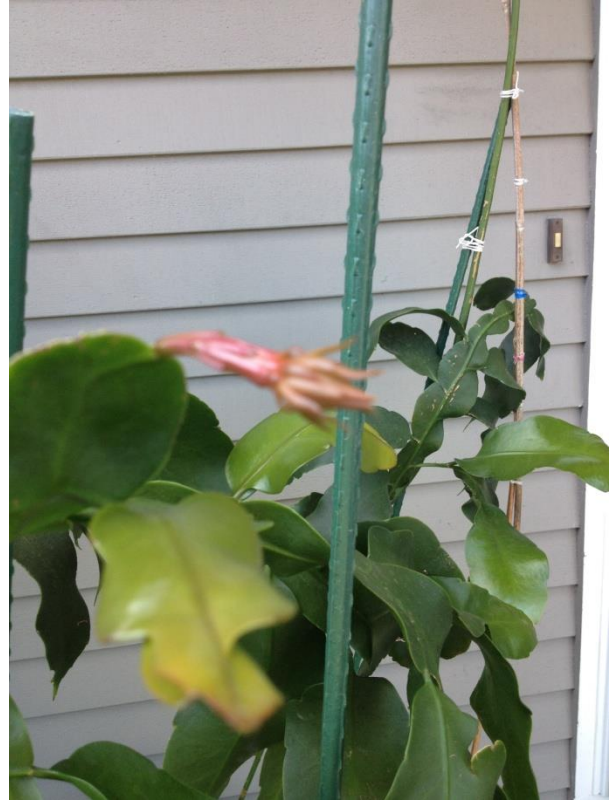
Each body of the flower is growing longer; the flower head is growing bigger.



Day10: August 22, 2015



The petals
are
growing
bigger.



Day 11: August 23, 2015

See how clear the petals are.

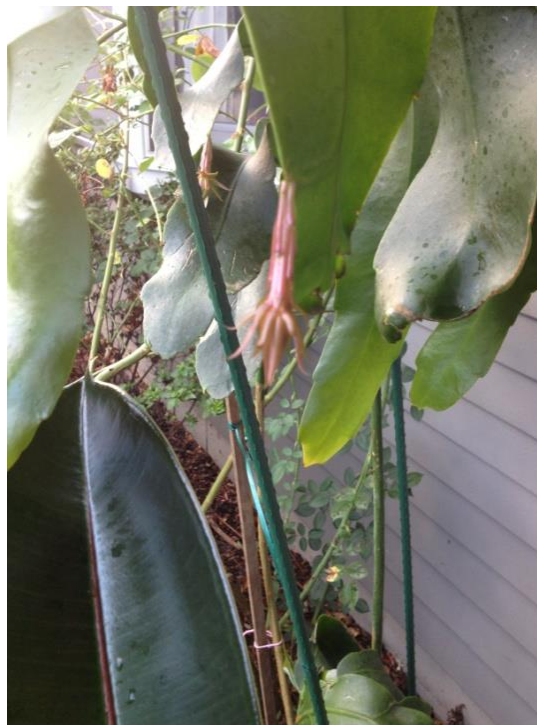


Day 12: August 24, 2015



They are healthy growing each day while I am happily observing them every day.

Am I lucky?





Hide and Seek. Are you able to see each of the three?

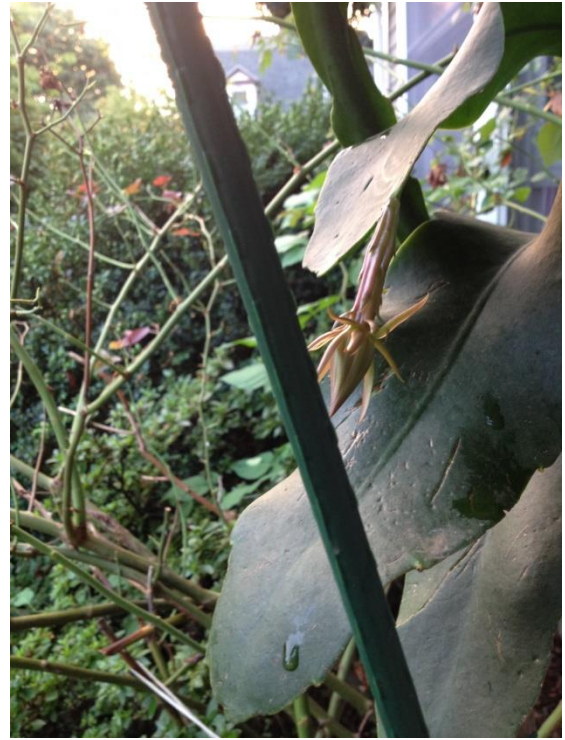
Day 13: August 25, 2015

Now you can see the three big buds clearly.





Will they
bloom on
the same
day?

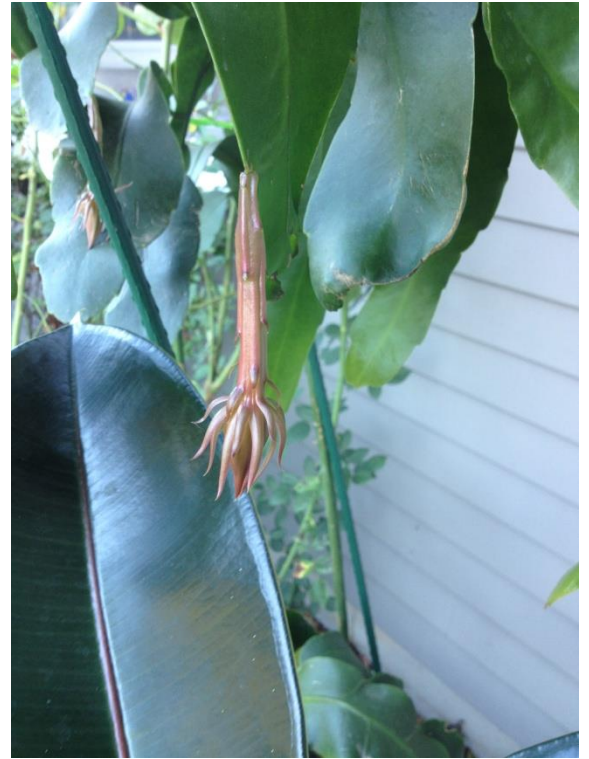




Day 14:
August 26,
2015

Are you
charmed by
their
presence?

Do you think
life is better
because they
are there?





Day 15:
August
27,
2015

Upper
right one
is from
yesterday.
Lower
right one
is from
today.

Do you
notice a
little
change in
color
compared
to the
ones in

yesterday?



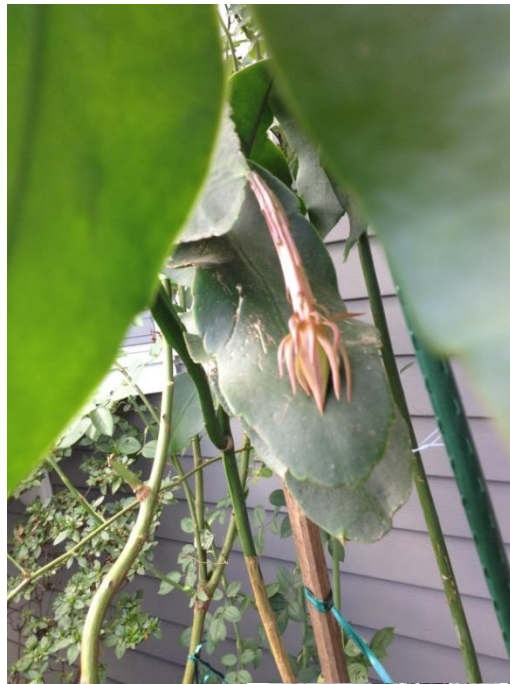


Day

16:

August 28, 2015

Night starts to get cool down. The buds are 4-5 inch long, starting to glow a little bit. The upper one is always getting the best shot. It seems bigger but in reality the one in the back is the one I first spotted and is the biggest one among the three.





Day 17: August 29, 2015



It is the end of August, but the weather is surprisingly warm. With the warm temperature, this tropical plant grows nicely each day.



Day 18: August 30, 2015



Now the buds are 5-6 inches long.

Look carefully in order to appreciate the beauty of them.

The warm and humid weather at day time really



accelerate the growth of the buds.



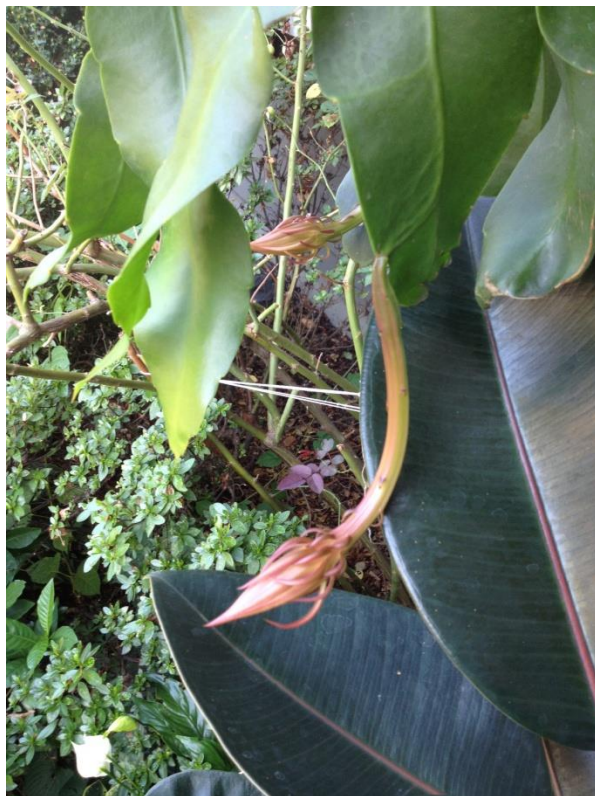
Day 19: August 31, 2015

The stems are starting to curve. The last day of August is a humid warm day with temperature reaching 90°F. Is it hot for you? But not for Epiphyllum, they do enjoy this very warm weather.





and prepare for flowering. I can't wait. Can you?



Day 20: September 1, 2015

It is getting close to bloom. See the stems of the buds are curving.

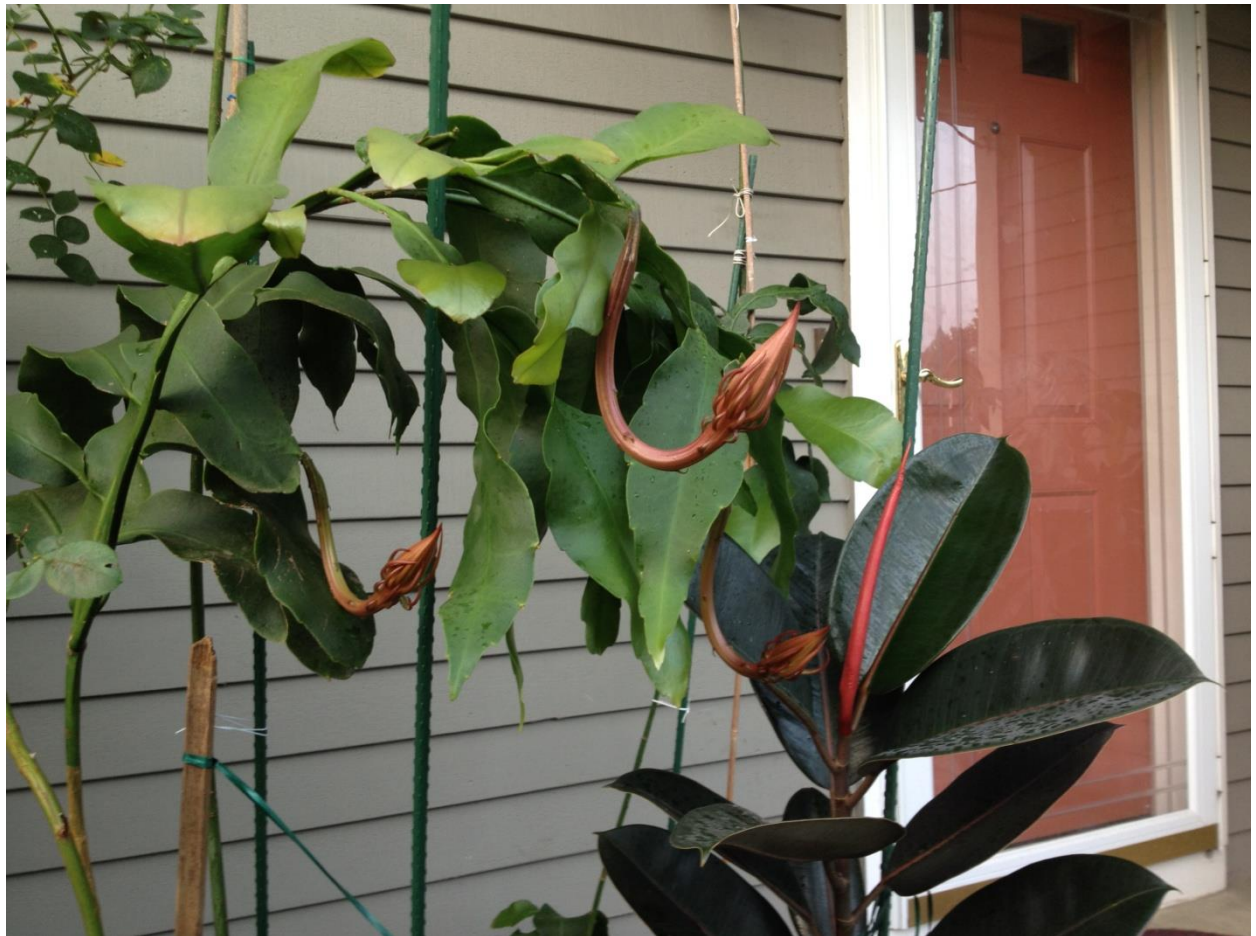
The next three days will be hot and humid with temperature reaching 90°F again. It is a very good condition for this tropical plant to grow



Have you noticed the difference how much they curve from morning to afternoon?



Day 21: September 2, 2015 6:30 in the morning.



4:30pm in the afternoon. See the change? From my first experience, I guess they are going to bloom this Friday (09-04-2015).



Have you wondered where the rose bushes shown in the previous photos are? Well, I cut a lot of branches off in order to have a good view of the Epiphyllum buds and flowering when time is up. My daughter asks if the rose bush will get damaged with fewer flowers next year. I honestly don't know. Feel guilty too. Hope they are all right. Hope, in the spring, the rose bush bring us as many flowers as usual. Do I treat them fairly? I would say yes but my kids think Epiphyllum is more precious at this moment for me.

Friday, September 4, 2015 will be a Labor Day long weekend in the United States. How about host an Epiphyllum blooming party with champagne, cake? Invite friends, neighbors to celebrate? Ready for a night of excitement?

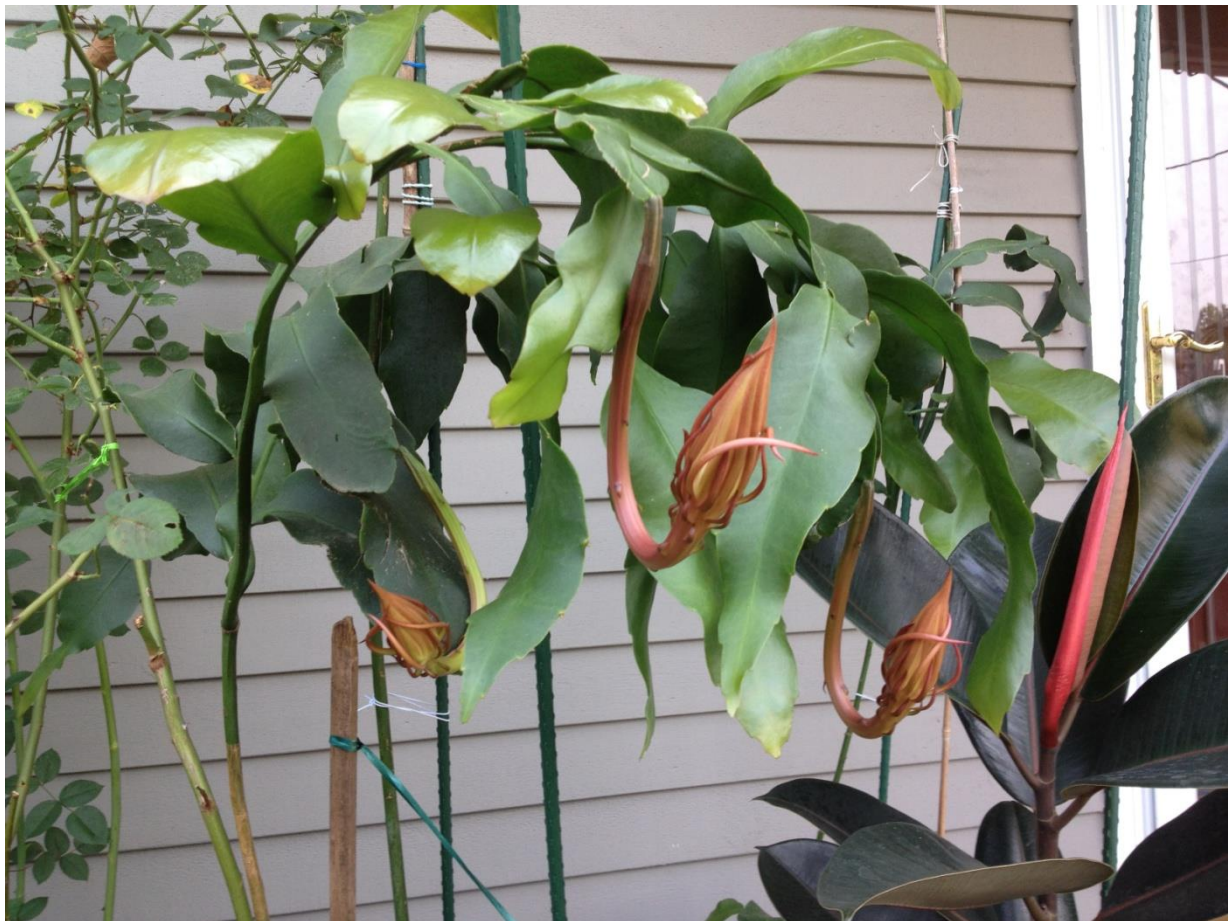
Day 22: September 3, 2015

Normally I don't get the chance to take pictures after the Sun rise in the morning since I always go to work early. But today is my daughter's first day in middle school. I have made the commitment to send her to school on the first day of each school year no matter what. This is the first time to watch her taking school bus to school on the first day of school.



So today I get the chance to capture the buds under the morning sun. See the left one in the back, it is the first one I spotted 22 days ago and it will be the first one to bloom. See the glowing yellowish radiant inside! Today is another hot day, last day of 6-day straight of near 90°F. The warm weather adds the fuel to the growing buds. Will this one bloom tonight? And the other two bloom tomorrow night?

After seeing them in the afternoon after work, I know they are not going to bloom tonight. Maybe they are going to bloom tomorrow night or Saturday night. Isn't that is even better because this will be a long weekend and everyone can stay up late at night observing them while I can be worry free for staying up overnight.



Day 23: September 4, 2015



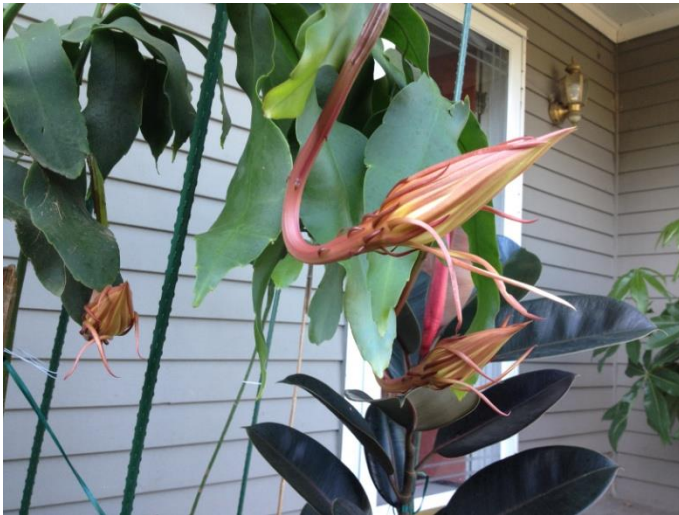
This is the picture of them in the morning. What will they look like in the afternoon? Will they bloom tonight? Should I inform my friends?

Here they are in the afternoon of the 23rd day of their lives. Notice they are glowing inside?! With the previous, first time experience, I know they are not ready to bloom tonight yet. We need to



wait for another day. Tomorrow Definitely is the day!

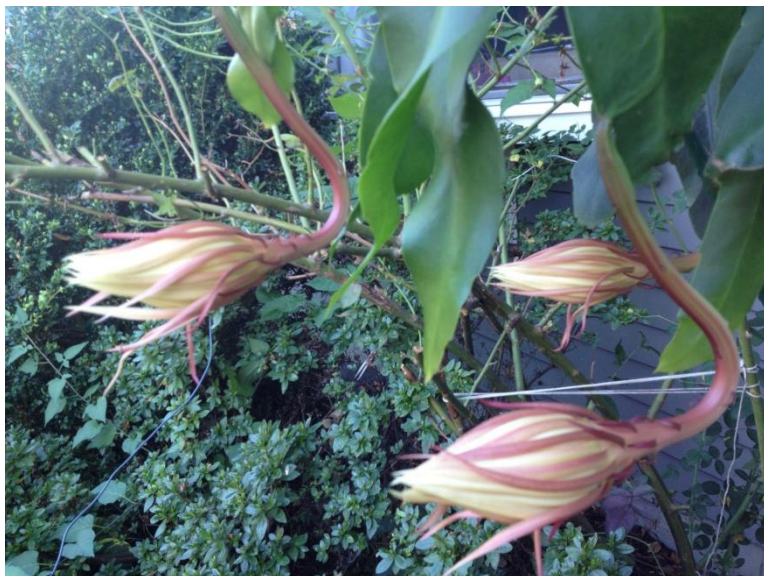
Day 24: September 5, 2015



Here they are in the morning of the 24th day of their lives at 9:30am. The outline petals are opening up. Look carefully as the day goes on, the buds will become rounder and “bubbling up”.

See how they look in the afternoon at 4pm? The waiting is over. Tonight is the night! The energy is gathering for the thrust of flowering, like a volcano erupting!

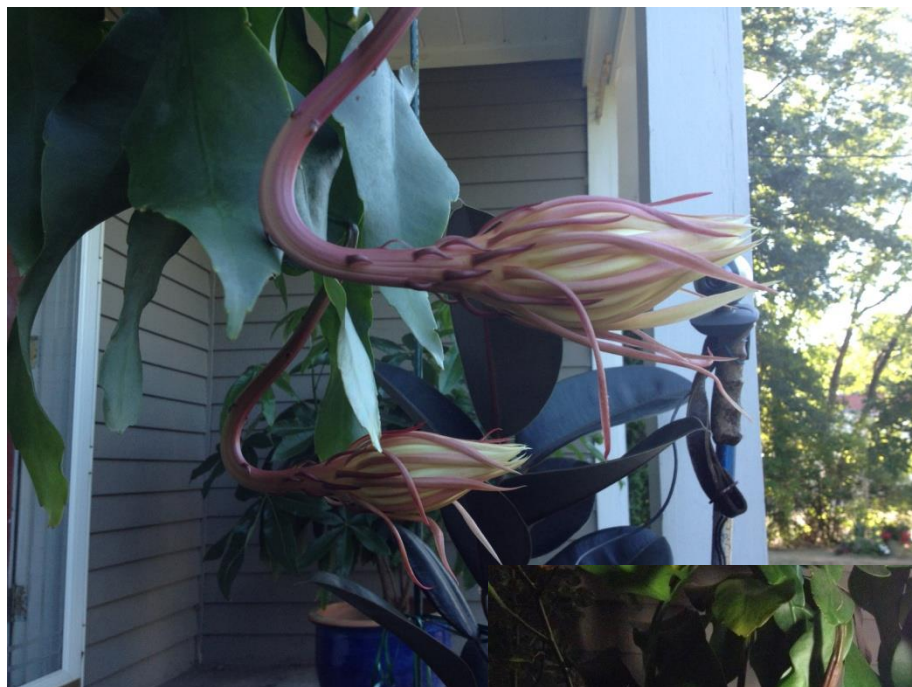




At 4:30pm:

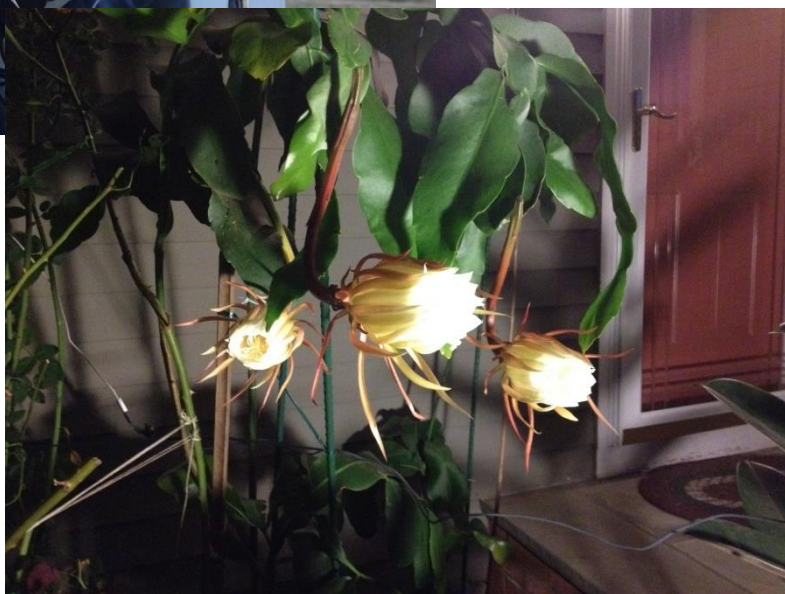
You cannot miss their round buds now. They are ready. Aren't they amazing?

Call my friends, set the table, and let the party begin!



At 7:30pm:

After the Sun just settling down, the Epiphyllum start their glory.





Around 8:00pm:

I am so excited to watch the Epiphyllum buds opening up that I forget to turn on the light on the porch.

Do you think we do not need the light because the flowers bring us the glow?

It is hard to tell the back one is the first one I spotted 25 days ago. It is also the largest of the three. But because the position it locates and how the camera is set up, the other two get the most spot light.



Around 9pm:

You can see the petals opening up in front of your eyes. Do you smell the light fragrant from the flowers? Come closer, inhale slowly, enjoy the gift nature has granted to us.



Around
9:30pm:
As minutes
go by, you
can see
they open
up more.



Around 10pm:



Let's measure them to see how big they are now.

The middle one is about 5-inch in diameter. The back one is about 6 inches.



Around 10:30pm:

See the middle, and the right one are in the spot light.

Where is the biggest one in the back? It is hidden by the ever-growing middle flower.

Now we are surrounded by the strong, distinguish fragrant, best perfume in the world.

Let me catch an image of the back flower which is the biggest of the three.

See the outline pinkish petals all are stretching up to the back? Do you think it looks like a rocket ship ready to launch?



Around 11:00pm: Together the three of them are on their way to the peak moment.





Are they going to fly out somewhere in outer space?

At 11:30pm:

Now you decide which one is the biggest.

Love the smell? Too strong for you?





The triplets: who is who in the pictures?

Above left: the middle one and the right one which I referred in the previous photos.

Above right: the flower in the back which is also the one I first spotted and the biggest one which does not get as much spot light as the other two.

Now you don't see the much difference in size. The flowers are getting heavier as they bloom. You can see the evidence from the tilting supporting sticks



At 11:40pm: Now see them in another angle. Can you tell which is which?

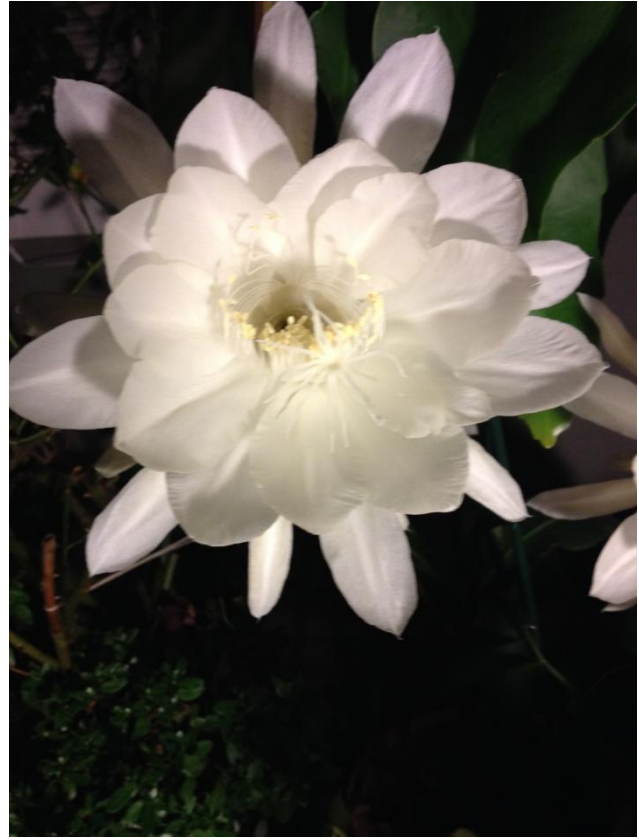




The three
of them
at
11:55pm
on day
24th, 09-
05-2015

We are
going to
the
midnight.

A new
day is
coming!





Day 25: September 6, 2015 Midnight

A new day has come; the night is getting quieter and the thrust are on for the flowers.

Look carefully of the flower petals. Do you notice they are opening more



and they bcome a lot of bigger compared to the ones twenty-minute ago?

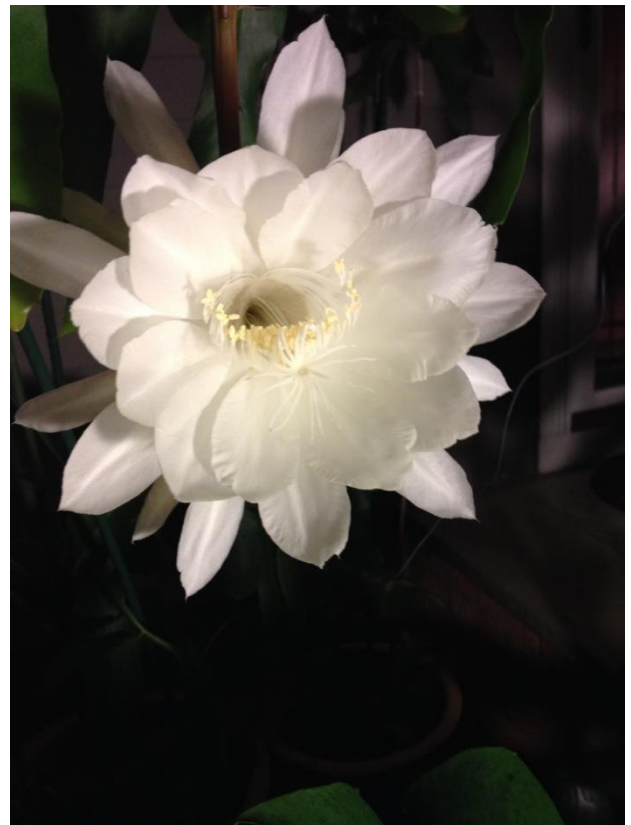
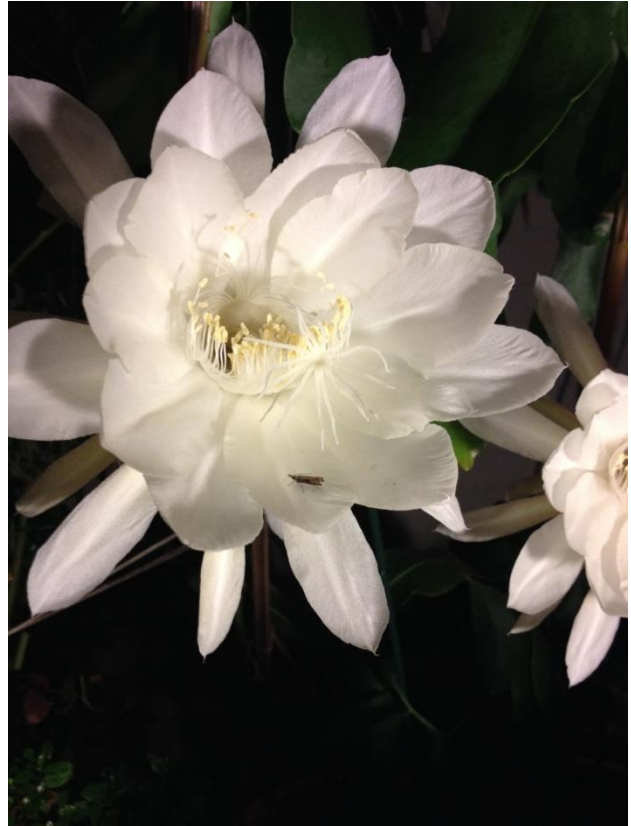


Day 25: September 6, 2015

At 12:30am. A surprising guest has come to visit.

Not only do I like the flowers and smell, but also the cricket. A he or a she? It will make here as its new home for a while.

Are you going to dance under the night with the flowers?



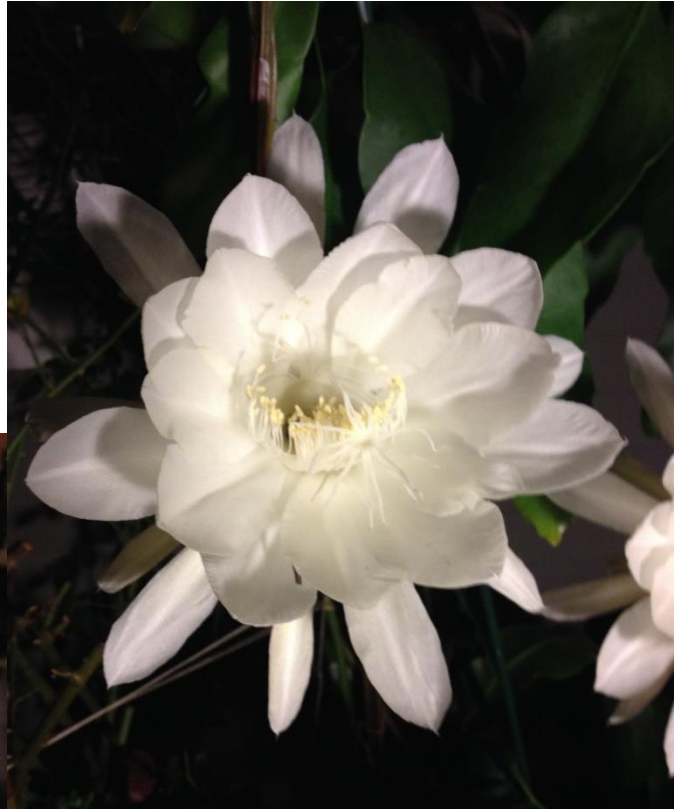
At 1:00am:

Feel the energy from the flowers? All are quite but them. Don't blink your eyes, otherwise you will miss out something.



At 1:30pm: "Queen of the night"

I lost my words.



At 2am:



At 2:30am:

Are you in awe? Do you wish the night never end and the flowers are here forever?



The three of them, one by one, are in full bloom.







At 4am:





At 4:30am:
Friends have
long left.

Look carefully,
you will notice
the outer
layers are
closing in.

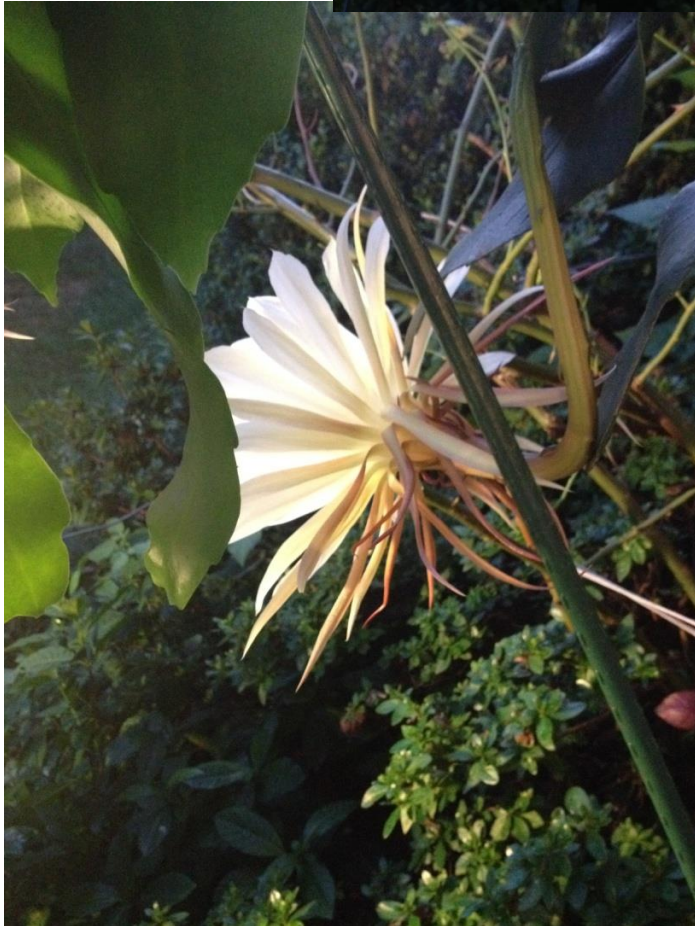
The peak time
is in our past
memory.

My heart feels
a little tight
now.



At 5am:

The dawn is coming, and
the flowers are still
strong.



At 5:30am:

Sky is lighter;
the flowers
are still on
display.



At 6:00am: As the day light comes, the flowers are closing in more.



At 7am:

The Sun can
sense the
elegance of
my
Epiphyllum
now.



At 7:30am:

They are still there
under the morning
sun.





12 hours
later at
8am:
too many
people
say



Epiphyllum flowers can only show a few hours at night.

But my Epiphyllum have shown me a full night, 12-hour of glory. How amazing?





At 8:30am:
Thank you
Epiphyllum, the
nature, and the
Sun for bring me
such wonderful
gifts!



At 9am: Under the bright sunlight, it is time for my Epiphyllum to say goodbye. They are close in now.



At 10am on the 25th day, September 6, 2015: This is the one I first spotted 25 days ago. They have used up their energy. See the stems are no longer strong enough to make a “hook”, to support the flower. Good bye, the “Queen of the night”. Thank you for your spectacular scene through the night.

