

Straight from the Heart



A Newspaper for the Sacred Heart University Community

Volume 2 Number 6 March 2001

Faculty Authors Contribute to Scholarship In Classroom and in Their Fields



Eleven Sacred Heart University professors, all of whom published books in the past several months, gather for a portrait in the Mahogany Room. Seated, from left: Dr. Charlotte Gradie, Dr. Claire Marrone, Dr. Kathryn LaFontana and Dr. Louise Spence. Standing: Dr. Laurence Weinstein, Dr. Lucjan Orlowski, Dr. Pamela Levangie, Dr. John Jay Rouse, Dr. Michelle Lusardi, Dr. Efim Kinber and Dr. Richard Grigg.

At least 11 members of the Sacred Heart University faculty have recently published books, including biographies, theological studies, cultural criticisms and textbooks.

Sacred Heart University has 145 full-time faculty members. In addition to those who have authored books, numerous other faculty members have written papers and articles or attended conferences to advance the scholarship in their fields.

"Sacred Heart University is first and foremost a teaching University and a com-

munity of learning," said President Anthony J. Cernera, Ph.D. "Because our faculty has an extraordinary commitment to our students, providing them with the personal attention they need to grow, I am pleased that they have made time to share their expertise as authors and make contributions to the academic community."

Louise Spence, Ph.D., an associate professor of media studies, has collaborated with Pearl Bowser to produce *Writing Himself into History: Oscar Micheaux, His Silent Films, and His Audiences*, published by Rutgers University Press. Their book provides the definitive analysis of the career and artistry surrounding Micheaux, who, aside from Spike Lee, is regarded as the best known — and most prolific — African-American director in film history.

Also dealing with history is Dr. Charlotte Gradie's *The Tepehuan Revolt of 1616*. Published by the University of Utah Press, her book presents a study of the Spanish conquest of the Jesuit missions among the Tepehuan Indians of northern Mexico. An associate professor of history, Dr. Gradie has considerable expertise on Latin America.

Claire Marrone, Ph.D., an associate professor of modern languages, tackles history from a feminist's perspective with *Female Journeys: Autobiographical Expressions by French and Italian Women* (Greenwood Press), a study of 19th and 20th century women's paths away from oppressive social and familial structures.

Dr. Marrone traces the reasons why a 19th-century protagonist might leave her country, a turn-of-the-century heroine might flee her family, and a modern female might separate from her mother.

John Jay Rouse, Ph.D., an assistant professor of criminal justice, has authored a biography of Sing Sing's legendary warden, Lewis Lawes, entitled, *Firm But Fair: The Life of Sing Sing Warden Lewis Lawes* (Xilbris).

"Warden Lawes played a significant role in the shaping of correctional and criminal justice policies during the 1920s and '30s," said Dr. Rouse, whose extensive research included two dozen visits to the John Jay College of Criminal Justice Library in New York to review the warden's collection of personal papers.

Continued on page 2

Professors McAllister, Neu Reach Out to Salvadorans

How deeply do Robin McAllister, Ph.D., and Terry Neu, Ph.D., care about humanity?

The two Sacred Heart University professors recently demonstrated their love for the less fortunate by visiting earthquake-racked El Salvador, the Latin American nation with which the University has long-standing ties. They were joined on their Feb. 8-16 mission by Lauren Kempton, Ed.D., an adjunct assistant professor of education, and alumni Cesar Munoz Acebes '95 and Brooks Parmelee '98 MAT.

"No one else comes down to visit us," Dr. McAllister recalled hearing from residents of Tierra Blanca, a remote village that was heavily damaged by the January earthquake. "The only time we were given aid, people just threw stuff at us from trucks...making us fight for packages of food like animals," he was told.

During their visit, the University contingent taped many hours of video footage, interviewing several earthquake survivors as well as officials from the University of Central America. They discovered that the magnitude of suffering and need far exceeds the amount of relief supplied by the government and international sources.

In one segment, a community leader from San Hilario, Mako Gonzalez, spoke of the villagers' love for Sacred Heart University. "I speak especially to the students who could not be here," said Gonzalez, alluding to the numerous construction projects tackled by students during the springs of 1996-00. "You and we are brothers and sisters; we are a family; we are a community."

Dr. McAllister marveled at the courage and resiliency of the Salvadorans, who have endured years of civil war and poverty. "They have a tremendous religious faith, which helps them survive catastrophes," he said.

This was the third experience in El Salvador for both Dr. McAllister, an associate professor of English and a faculty member since 1979, and Dr. Neu, an assistant professor of education who joined the University in 1996.

Dr. McAllister, who speaks fluent Spanish, was a member of the original faculty group that toured the tiny nation in June of 1992 — just months after the end

of the civil war — and returned with a second contingent the following July. Dr. Neu led the last two student delegations during spring break.

On the morning of Feb. 13, a second major earthquake struck when the University group was preparing for the trip home, delaying their departure by two days. Dr. McAllister was unfazed, saying, "I've been to Bosnia. I'm used to traveling in somewhat risky areas."

Despite the force of the shaking, the second quake caused no significant damage in Tierra Blanca, but another community, San Vincente, was badly hit. "The school and the church had collapsed, and people were living in the town square in donated tents," Dr. Neu said. "It gave us time to process and to see what the local people had gone through. It was heartbreaking."

The next steps?

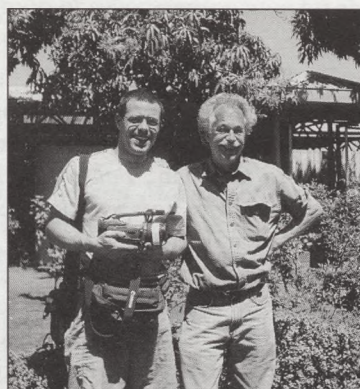
The videos will provide a poignant message for interested groups at the University and in the wider community. In late spring, Dr. McAllister and Munoz Acebes — a graduate student at Johns Hopkins who formerly worked at CNN — may parlay their con-

siderable talents to produce a video for public television or another venue.

If conditions in the country have improved sufficiently, Dr. Neu and other faculty will lead a group of Sacred Heart University students to Tierra Blanca in August. The plan is to help clear the lots of severely damaged or leveled adobe homes, allowing for the construction of new, safer cinder block structures.

"We chose to make this visit because we feel a responsibility as long-time partners with the people of El Salvador to do what we can to help," said Sr. Donna Dodge, Ed.D., vice president for Mission and Planning. "Community service is a year-round commitment for us, one that we take very seriously. In fact, we had a number of people ask to make the trip to El Salvador, but we had to limit the delegation to five due to cost. Each delegation member was chosen because they had already been to El Salvador, and because each could offer a specific gift the community needed at this time."

Faculty Profile

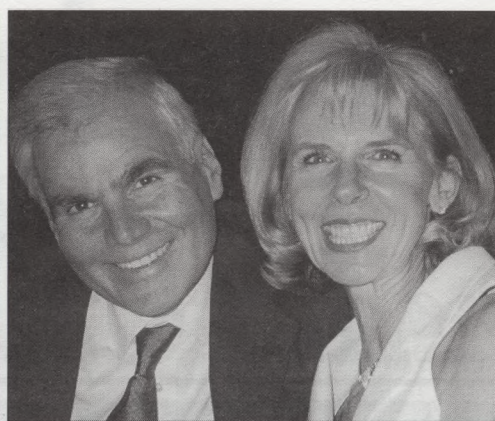


Cesar Munoz Acebes '95 (left) and Dr. Robin McAllister pause during their February visit to El Salvador. At right: an example of the earthquake's devastation.





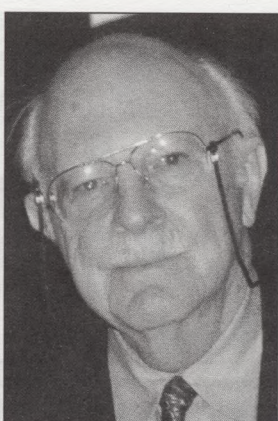
Gov. John G. Rowland



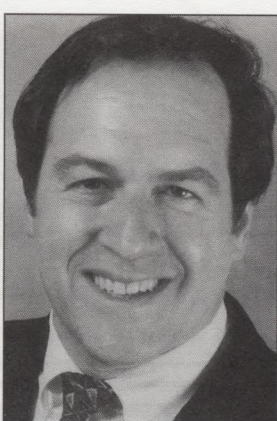
Robert and Barbara Scinto



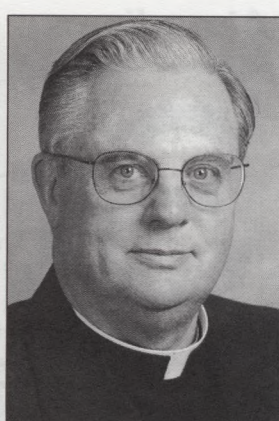
Michael C. Dailey



Hub Schlafly



Jeffrey A. Sonnenfeld



Msgr. J. Peter Cullen

Gov. Rowland, Six Others to be Feted at Discovery Dinner

Sacred Heart University will present a Discovery Award to Connecticut Gov. John Rowland at the 12th annual Discovery Dinner and Awards Ceremony, "Discovering Tomorrow: Technology and Scholarship," on Saturday, April 21 in the Pitt Center.

The University will also honor two of its own at the gala black-tie event. Robert Scinto '71, one of the region's major developers, and his wife, Barbara, have been selected to receive the Discovery Award, and Michael C. Dailey '75, president and CEO of Southport-based Dailey Capital Management, will be presented the Alumni Award of Excellence.

Discovery Awards will also go to Hub Schlafly Jr., a cable television pioneer who designed and patented the TelePrompTer, and Jeffrey A. Sonnenfeld, D.B.A., founder, chairman and president of The Chief Executive Leadership Institute in Atlanta.

In addition, the Walter W. Curtis Medal of Honor will be awarded to Msgr. J. Peter Cullen, D.Min., pastor of St. Aloysius Parish in New Canaan.

A crowd of 400 is expected to attend, with proceeds to benefit the Sacred Heart University Scholarship Fund. More than 800 students have benefited from these scholarships through the years. Individual tickets are \$250 (\$150 for faculty and staff), and tables of 10 are available at several levels of sponsorship.

The University will showcase its new wireless technology at the dinner by placing wireless laptops throughout the room. As a special feature of the evening's technology theme, students in the Media Studies program are creating digital biographical video introductions of each honoree, which will be shown

during the ceremony.

Since first taking office in 1995 at age 37, Gov. Rowland has made responsible budgeting, spending restraint and improving the quality of life in Connecticut his top priorities. The state has run budget surpluses totaling more than \$1.2 billion over the past six fiscal years.

To improve the quality of life for all residents, the governor is investing more than \$2 billion to rebuild the state's education system, from pre-school through college.

Gov. Rowland has received many public service awards, including both the Malcolm Baldrige and the Ella Grasso awards, and he was the first governor to receive the Excellence in State Government Award.

Scinto is the classic case of a self-made man, rising from a plumber who attended evening classes to chairman of R.D. Scinto, Inc., a Shelton-based real estate development company. Established in 1978, the company owns more than 30 office and industrial buildings in Bridgeport, Fairfield, Shelton, Trumbull and Wilton. These holdings occupy more than two million square feet of space.

In 1984, Scinto became the first alumnus to serve on the University's Board of Trustees. He was presented the Curtis Medal of Honor at the University's 25th anniversary celebration in 1988, and was among the first recipients of the Alumni Award of Excellence in 1998. Bob and Barbara Scinto are the parents of four children, twins Dana '98 and Amy, Katie '00 and Robert.

Dailey, a former University trustee, founded Dailey

Capital Management in 1997, after spending 18 years with Triad Capital Management, Inc., a highly successful private equity investment firm.

He is a former executive director and shareholder of Cushman & Wakefield, where he ranked among the top producers in commercial real estate.

Dailey and his wife, Elizabeth, live in Fairfield with their son, Wil.

Schlafly, whose invention of the TelePrompTer revolutionized the television industry, received two Emmys from the National Academy of Television Arts and Sciences, in 1992 and '99, as well as the Vanguard Award for Science and Technology in 1974.

In 1992, Schlafly was named the University of Notre Dame's Alumni Man of the Year. Hub and his wife, Mary-Leona, will celebrate their 57th wedding anniversary in June.

Dr. Sonnenfeld presides over The Chief Executive Leadership Institute, a non-profit organization dedicated to the advancement of management education through scholarly research and peer-driven educational programs. He is also an adjunct professor at Yale University's School of Management and the author of five books. Dr. Sonnenfeld received his AB, MBA and doctoral degrees from Harvard University.

Msgr. Cullen has served as pastor of St. Aloysius in New Canaan since 1985, following pastorships at St. Peter's and St. Mary's parishes in Bridgeport. He is an accomplished poet who has been published in *Maryknoll* magazine and elsewhere.

For dinner reservations and sponsorship information, call 371-7860. ■

Faculty Authors

Continued from page 1

"He was involved in the debates concerning gun control, the death penalty, juvenile justice and the role of prisons, and his influence can still be felt today."

Publishing isn't new to Richard Grigg, Ph.D., director of the University's Master of Arts in Religious Studies (MARS) program and a faculty member since 1985. *Imaginary Christs: The Challenge of Christological Pluralism*, published by State University of New York Press, represents his fourth book.

Dr. Grigg's latest work discusses the challenges arising from christological pluralism and suggests evaluative criteria for sorting through an abundance of competing Christs.

Several textbooks are in the mix. Kathryn M. LaFontana, Ph.D., assistant professor of psychology, is the author of *Using Statistics in Psychological Research*, published by Primis Custom Publishing, a division of McGraw-Hill.

Dr. LaFontana describes her work as "a custom text, primarily for use with the psychology statistics classes at Sacred Heart," but the publisher has considered its scope broad enough to place the book in its regular on-line catalogue.

Efim Kinber, Ph.D., assistant professor of computer science, has tackled his specialty with *Theory of Computing: A Gentle Introduction*. In this text published by Prentice Hall, Dr. Kinber and co-author Carl Smith present largely traditional material in a dynamic "how to" rather than the typical "why for" fashion.

"Unlike any other textbook in the field, the instructor's manual contains solutions to all exercises," Dr. Kinber said.

Laurence Weinstein, Ed.D., a professor of management, has teamed up with a colleague now on leave, Madan Annavarjula, Ph.D., to produce *Marketing Management: Cases for Creative Problem Solving*. Released by South-Western College Publishing, the volume contains 25 original marketing case studies.

Dr. Weinstein has been a faculty member since 1977.

Two of the University's associate professors of physical therapy have published their work. Pamela K. Levangie, D.Sc., collaborated with Cynthia C. Norkin, Ed.D., on the third edition of *Joint Structure and Function: A Comprehensive Analysis* (F.A. Davis). Since its initial appearance in 1983, the 512-page volume has sold more than 165,000 copies.

Michelle M. Lusardi, Ph.D., has undertaken an even more monumental project with *Orthotics and Prosthetics in Rehabilitation* (Butterworth-Heinemann). Caroline C. Nielsen, Ph.D., is the co-author. Their work encompasses 636 pages, 31 chapters and 36 collaborators.

"Our book is unique in its true interdisciplinary focus," Dr. Lusardi said. "We have brought together contributors from PT, orthotics, prosthetics, OT and medicine."

Finally, Lucjan Orlowski, Ph.D., a professor of economics and an internationally recognized economist, demonstrated his prowess as the co-author of a text published in German, *Balance of Payments Crisis in Central and Eastern Europe*. The publisher is NOMOS of Baden-Baden, Germany.

Dr. Orlowski, a faculty member since 1983, serves as an advisor on monetary matters to his native Poland and other European nations, and his theories and ideas have appeared in nearly 100 international publications.

In addition to the faculty authors, Sacred Heart University Press recently published *Religion and Violence, Religion and Peace*, a book based on papers presented at the Center for Christian-Jewish Understanding's (CCJU) landmark 1998 conference held in Auschwitz, Poland. The editors are Rabbi Joseph H. Ehrenkranz, CCJU's executive director, and David L. Coppola, Ph.D., the center's director of publications and conferences, assistant to the president and adjunct faculty member. ■

Straight from the Heart

Vol. 2, No. 6

March 2001

Vice President, University Relations	Elinor U. Biggs
Director of Public Relations	Jeff Kimball
Editor	Don Harrison
Contributing Writers	Jill Klimack, Christopher J. Sheehan
Manager of Creative Services	Roberta Reynolds
Senior Graphic Designer	Ruth Baxter
Photographers	Vin Greco, Dr. Robin McAllister, Dr. Terry Neu

Other Contributors:

Carrie Fellrath, Athletic Communications;
Marion Warne '95, Human Resources.

Straight from the Heart is published throughout the academic year by the Sacred Heart University division of University Relations, 5151 Park Avenue, Fairfield, CT 06432-1000. Telephone: (203) 371-7970.

News and Calendar events may be emailed to news@sacredheart.edu. For story ideas, contact the editor at 365-4808 or via email: harrisond@sacredheart.edu. Timeliness and space availability will be important considerations.

REAPS Pursues Links with Australian Church Educators

In the decade since its founding, the University's Institute for Religious Education and Pastoral Studies (REAPS) has helped educate more than 20,000 lay people, religious and priests. The great majority have been here in Connecticut, but REAPS programs have spread to Florida, France and Belgium, with plans underway for a new program in Oxford, England.

If recent overtures prove fruitful, REAPS may become a household name on the other side of the globe. Msgr. Gregory M. Smith, Ed.D., the institute's director, and Msgr. J. Peter Cullen, pastor of St. Aloysius Parish in New Canaan and a member of the REAPS board, spent 10 days at the end of last year visiting Church educators in Australia to explore outreach initiatives.

The two priests traveled 20 hours by air in response to invitations from alumni of REAPS programs in Europe. In Melbourne, they met with the Rev. Charles Portillo, secretary to the Most Rev. George Pell, Ph.D., Archbishop of Melbourne, and with participants of the REAPS Inner Sabbath program held annually in Louvain, Belgium. The group was exploring the possibility of establishing a program like Inner Sabbath for Australian Catholics, to be held most likely in Sydney.



Msgr. Gregory M. Smith (left) and Msgr. J. Peter Cullen visit with some of Australia's most famous inhabitants.

The Connecticut priests also met with diocesan superintendents of schools in Cairns, Queensland, who asked them to draw up a proposal for continuing education and certificate programs for their teachers. The discussions looked promising, according to Msgr. Smith, who at one time headed all education programs for the Diocese of Bridgeport. He noted that the most likely agenda would be an "intensive immersion experience" for Catholic educators, along the lines of the REAPS GOODNEWSweek program held each January in Paris.

With the help of local on-site coordinators, such a program could be offered for Australians either in their homeland or perhaps in California or Europe.

Australian Catholic schools are funded by the government, so advancement programs for educators would come under this umbrella. Since the country is so sparsely populated—19 million residents in a land mass just smaller than that of the continental U.S.—and so distant from its cultural roots, travel for sabbatical-style study is a fact of professional life.

The institute is drawing up proposals for expected submission by April or May. Potential programs could begin in 2002 or 2003 ■

Coaches Corner

Brian Reardon

As a competitor in the 126-pound weight class, Brian Reardon relied on tenacity and quickness. He's no different as a coach.

With remarkable swiftness, Reardon has built a wrestling program from the mat up in just three years, placing Sacred Heart University among the top three teams in New England (behind Harvard and Brown but ahead of traditional power Boston University and other notables).

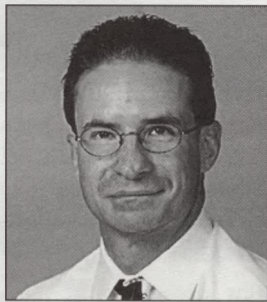
Arriving on campus in September of 1998, Reardon assembled his fledgling team with the material on hand, and finished with a 3-18 record in dual meets. "It was kind of a humbling experience for me," he said, alluding to his successes as a high school coach at Bristol Eastern and as an assistant coach at Trinity, Central Connecticut (his alma mater) and Wesleyan.

Last year, giant strides were taken toward respectability, with a 4-6 record and freshman Jason Cucolo (Milford) earning runner-up honors in the 133-pound class at the East Coast Wrestling Association (ECWA) championships. This winter, the Pioneers concluded the dual meet portion of their season with an 11-8 record and a sixth-place finish in the conference.

SFTH: Your program has achieved success quickly. What do you attribute that to?

Reardon: It's taken a lot of hard work, countless hours on the phone recruiting, researching recruits. I think it's the culmination of things...the school has been supportive, there's our community involvement, whether we're supporting another team or working with Habitat for Humanity. We drew close to 500 people at our home meets.

SFTH: To suddenly find yourselves among the elite is nothing less than remarkable.



Reardon: I think the turning point this year came when we finished fifth out of 42 teams in the Sun Shine Open at Fort Lauderdale just

after Christmas. There were a lot of traditionally strong teams there. Our guys said, 'Oh, god, we're really good.'

SFTH: Which of your guys are the best of the best?

Reardon: Anthony Reynolds, a sophomore who competes in the 184-pound class, has a 26-7 record and is ranked among the top 25 in the country. He beat the 11th-ranked guy, Buffalo's Josh States. His brother, Shawn Reynolds, and Jason Cucolo also did really well. And we had a freshman, Rob Belville, who finished the regular season 7-1 in the conference.

SFTH: What is your goal for next year?

Reardon: We will elevate the schedule again, go after more of the higher quality teams. To me, that's the most important thing I can offer my guys...they're going to wrestle the top schools in the country.

SFTH: It takes a special breed to succeed in wrestling, does it not?

Reardon: When you play another sport in college, you can have some kind of life outside of it. Wrestling is different. You have to eat it and sleep it. You also have to be a good all-sport athlete.

SFTH: Collegiate wrestling has become increasingly competitive, has it not?

Reardon: At one time, there were over 200 Division I wrestling programs, but because of cost-cutting and Title XI, there are about 96 today. Wrestling is the fifth most popular sport in high school, so you have a comparatively small group of schools competing for the best in this large pool of talent. ■

Accomplishments

STEPHEN LILLEY, Ph.D., associate professor of sociology, has been elected president of the New England Sociological Association (NESA), a regional organization dedicated to advancing the teaching and application of sociology. Sacred Heart University will host NESA's Spring Conference on Saturday, April 28. Contact Dr. Lilley for details (371-7761 or lilleys@sacredheart.edu).

PETER LOTH, Ph.D., assistant professor of mathematics, produced a research paper, "When is a discrete bounded subgroup of an LCA group necessarily a topological direct summand?" for Vol. 2, No. 6 (2000) of the refereed periodical, *Far East Journal of Mathematical Sciences*. In addition, his research paper, "Topologically pure extensions," has been accepted for publication in the refereed volume,

Abelian Groups, Rings and Modules of the American Mathematical Society's book series, *Contemporary Mathematics* (that will appear this year).

LINDA PATRICK-PREYER, cataloguing supervisor in the Ryan-Matura Library, will receive the Support Staff of the Year Award from the Connecticut Library Association at the organization's annual conference on April 3 at the Waterbury Sheraton. The award recognizes the role of assistants and support staff in the library and information science fields.

PAMELA J. SMITH, director of advancement services, will publish an article, "The Search for the Perfect Woman Prospect," in the Spring 2001 Association of Professional Researchers for Advancement (APRA) issue entitled *Women in Philanthropy*.

Briefly Noted

► Newman's Donates to SHU Players

Newman's Own, the Westport-based company owned by actor **Paul Newman**, has donated \$5,000 to the SHU Players. The donation was prompted by **Doris Dancewirth**, a Newman's employee, in honor of her niece, **June Krumholz**, a sophomore member of the SHU Players. Newman's is a long-time supporter of WSHU radio.

► In Bowley's Memory

The University has established an account for contributions in memory of **Christopher Bowley '99**, the graduate student and WSHU radio employee who died on Jan. 26. At the request of the Bowley family, contributions to the account will assist the SHU Players. Checks should be made out to Sacred Heart University with a memo specifying the Bowley account.

The Sacred Heart University Alumni Association has purchased a brick for Bowley in the new Pioneer for Life-Brick Walk.

► Designer to Speak

Noted designer **Joseph Abboud** will speak at the Corporate Strategies & Insights Forum on April 5 in the Mahogany Room. "Entrepreneurship: The Management of Creativity," is the topic of his talk. There will be a 6 p.m. reception, followed by Abboud's presentation at 6:45. RSVP Corporate Relations at 365-7628.

► Grant Awarded

The Connecticut Conference of Independent Colleges has awarded the University a Distance Learning Consortium award of \$2,500 for the Latin American history course taught by **Charlotte Gradie, Ph.D.**, associate professor of history.

► Football Team Lauded

The University's 2000 football team, which assembled a 10-1 won-lost record and established more than 40 school records, was honored at a banquet on Feb. 4 at the Holiday Inn in Bridgeport.

A crowd of 250 was treated to a 25-minute video of season highlights produced by Cablevision 12 sports director **Bill Gonillo**, remarks by University President **Anthony J. Cernera, Ph.D.**, and Director of Athletics **Don Cook**, and the presentation of athletic and academic awards.

Welcome, New Hires

SANDY AURITI, director of Italian culture & research institute, University College

ROBERT BELLETZKIE, reference librarian, Ryan-Matura Library

JILL BENEDETTO, assistant manager, office operations, Buildings & Grounds

JOHN BORONA, electrician, Buildings & Grounds

KRISTEN HOLMES, assistant trainer, Athletics

KELLY MAHAN, executive secretary, President's Office

MYRTLE MARTIN, cleaner, Buildings & Grounds

MICHAEL MINICUS '98, assistant trainer, Athletics

WILLIAM PISANI, senior staff accountant, Business Office

REBECCA RICKERT, assistant director of alumni relations, Institutional Advancement

A. HARRIS STONE, Ed.D., program director, MA in Learning, University College

WANDA TRIMBLE, assistant to department chair, Art

MEGHAN WARNOCK '99, counselor, Admissions

NATHANIEL WINSTEAD, credit & collections manager, Business Office

Anniversaries

20 years

VIRGINIA HARRIS, Ed.D., Grants

5 years

LINDA MURPHY, Administrative Computing

WILLIAM O'CONNELL, Public Safety

Promotions

CYNTHIA LO PIANO, to manager, general accounting, Business Office

Transfers

LYNDA MOSCOVICS, from office manager, University Relations to assistant to dean, University College

calendar

SPECIAL EVENTS

March 24 Irish Night, Mahogany Room, 7-11:30 p.m. Live entertainment featuring the Bold Fenian Men, corned beef dinner and complimentary beer, wine and soda. Proceeds will support the women's basketball team's trip to Ireland in August. Tickets: \$35 per person, \$60 couple. Reservations: Ed Swanson, 365-7698.

March 28 38th Annual Founder's Day, luncheon and awards ceremony, Pitt Center, 12:45-3 p.m. RSVP: Eileen Paoletta, 365-4710.

ALUMNI

All workshops held in the Career Development Office. Info: 371-7975.

March 13 Interview Technique Workshop, 9 a.m.
March 13 Resume Writing Workshop, 3 p.m.
March 14 Interview Technique Workshop, 4 p.m.
March 15 Interview Technique Workshop, 1 p.m.
March 16 Job Search Workshop, 10 a.m.
March 16 Resume Writing Workshop, 1 p.m.
March 19 Interview Technique Workshop, 3 p.m.
March 20 Interview Technique Workshop, 11 a.m.
March 21 Interview Technique Workshop, 11 a.m.
March 26 Job Search Workshop, noon.
March 27 Placement Agency Job Fair, Mahogany Room.

COFFEEHOUSES

Admission: \$8 general, \$5 faculty/staff, SHU students free. Info: Tina Shah, International/Multicultural Center, 365-7614.

March 15 Native American Coffeehouse, Faculty Lounge, 8 p.m. A group from Hartford will demonstrate Connecticut's Native American culture.

March 29 Japanese Coffeehouse, Faculty Lounge, 7:30 p.m. Dancer Yoshiko Takashige and multi-instrumentalist Chris Merwin will collaborate on a performance based on the Japanese Noh dance, the Zen philosophy of Zhaungozi, and more.

April 5 Korean Coffeehouse, Faculty Lounge, 7:30 p.m. Composer Jin Hi Kim returns to share her insights with a lecture accompanied by demonstrations on the *changgo* (drum) and *komungo* (a six-stringed fretted board zither that originated in Korea in the fourth century).

CONCERTS

March 17 3 Doors Down, Pitt Center, 8 p.m. The Student Events Team's annual spring concert features the rock 'n' roll band 3 Doors Down along with Oleander and Fuel. Tickets: \$22. Info: Pam Barnum, 371-7846, or Al Precourt, 371-7969.

EXHIBITS

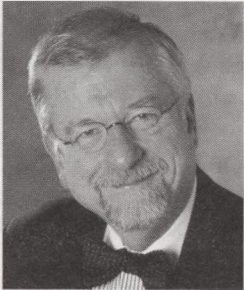
March 25-April 11 Student Art Exhibit, Gallery of Contemporary Art. Opening reception and Plohn Art Scholarship awards March 25, 1-3:30 p.m. Gallery hours: Monday through Thursday, noon-7 p.m.; Sunday, noon-4 p.m. Info: Sophia Gevas, 365-7650.

LECTURES

March 15 "Keeping the Faith in the 21st Century: What Makes a Catholic a Catholic?" Margaret O'Brien Steinfelds, Pitt Center, 7:30-9 p.m. Steinfelds has been editor of *Commonweal* magazine for more than 12 years and a contributor to *Psychology Today*, *The New Republic* and other publications. Tuition: \$20, including reception. Registration: REAPS, 371-7867 or email reaps@sacredheart.edu.

Events free unless otherwise noted.

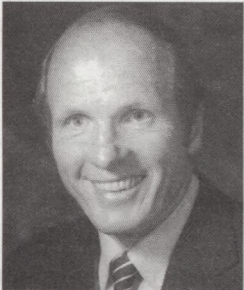
'Feast of the Lamb' The Institute for Religious Education and Pastoral Studies presents its annual Feast of the Lamb art lecture, dinner and REAPS awards of excellence (honorees below) on Palm Sunday, April 8 at the Chase Manhattan Bank Community Room in Bridgeport, starting at 3:30 p.m. Guest speaker Robert Baldwin, Ph.D., will discuss Mattias Grunewald's Issenheim Altarpiece, a carved shrine in Colmar, France. Tickets are \$35. Reservations: REAPS, 371-7867.



William F. Baker, Ph.D.
President & CEO
Channel 13/WNET



Alexander Koproski
Community Activist
Stamford



Jeremiah Lowney Jr., M.D.
Associate Clinical Professor of Orthodontics
University of Connecticut
School of Dental Medicine



Loretta Mann, O.S.F.
Assistant Superintendent
of Elementary Schools
Archdiocese of Hartford

Athletics

For schedule confirmation, call (203) 365-7601 or 396-8125.

Baseball

Coach: Nick Giaquinto

March		
<i>Southern Trip to Homestead, Fla.</i>		
3/Sat	Holy Cross	2:45 p.m.
4/Sun	Pittsburgh	1 p.m.
5/Mon	Duquesne	7 p.m.
7/Wed	Florida International	7 p.m.
8/Thu	Duquesne	2:30 p.m.
9/Fri	Tournament	TBA
10/Sat	Tournament	TBA
11/Sun	Manhattan	TBA
Northern Schedule		
13/Tue	Connecticut	3 p.m.
14/Wed	at Hartford	3 p.m.
17/Sat	at Yale (2)	12 p.m.
20/Tue	at Hofstra	3 p.m.
21/Wed	Marist	3 p.m.
24/Sat	at Quinnipiac (2)	12 p.m.
25/Sun	at Fairleigh Dickinson (2)	12 p.m.
28/Wed	at Rhode Island	3 p.m.
30/Fri	Maine	2 p.m.
31/Sat	St. Francis (N.Y.) (2)	12 p.m.
April		
1/Sun	St. Francis (N.Y.)	12 p.m.
3/Tue	at C.W. Post	3:30 p.m.
4/Wed	Manhattan	3 p.m.
7/Sat	at Central Conn. (2)	12 p.m.
8/Sun	at Central Conn.	12 p.m.
<i>Home games at the Ballpark at Harbor Yard.</i>		

Men's Lacrosse

Coach: Tom Mariano

March		
6/Tue	at Duke	3 p.m.
10/Sat	at St. Joseph's	1 p.m.
17/Sat	at Marist	1 p.m.
21/Wed	Siena	3 p.m.
24/Sat	at Mt. St. Mary's	1 p.m.
28/Wed	at Manhattan	3 p.m.
31/Sat	at Villanova	1 p.m.
April		
7/Sat	Canisius	1 p.m.

Women's Lacrosse

Coach: Laura Korutz

March		
17/Sat	at Niagara	12 p.m.
18/Sun	at Canisius	1 p.m.
22/Thu	Marist	3 p.m.
24/Sat	Le Moyne	1 p.m.
28/Wed	at Siena	3 p.m.
April		
5/Fri	Howard	2 p.m.
Softball		
Coach: Elizabeth Luckie '85		
March		
<i>Southern trip to Osceola, Fla.</i>		
4/Sun	Monmouth	9 a.m.
4/Sun.	St. Joseph's	1 p.m.
6/Tue	Detroit	9 a.m.
6/Tue	Siena	1 p.m.
7/Wed	Holy Cross	5 p.m.
7/Wed	Yale	7 p.m.
9/Fri	Villanova	1 p.m.
9/Fri	St. Francis (Pa.)	5 p.m.
10/Sat	Wagner	3 p.m.
10/Sat.	Rider	7 p.m.
Northern Schedule		
16/Fri	at Yale (2)	1 p.m.
18/Sun	St. John's (2)	1 p.m.
21/Wed	Rhode Island (2)	2 p.m.
24/Sat	Long Island (2)	1 p.m.
25/Sun	Monmouth (2)	12 p.m.
31/Sat	at Wagner (2)	1 p.m.
April		
1/Sun	at St. Francis (N.Y.)(2)	TBA
5/Thu	Iona (2)	3 p.m.
7/Sat	Central Conn. (2)	1 p.m.

Men's Tennis

Coach: Mike Guastelle

March		
<i>Southern Trip to Hilton Head, S.C.</i>		
4/Sun	Newberry	4 p.m.
5/Mon	UNC-Wilmington	12 p.m.
7/Wed	Belmont Abbey	4 p.m.
8/Thu	Martin Methodist	12 p.m.
9/Fri	Temple	8 p.m.
Northern Schedule		
16/Fri	at Central Conn.	3 p.m.
21/Wed	Rhode Island	3 p.m.
23/Fri	at Holy Cross	3 p.m.

25/Sun	at Wagner	12 p.m.
27/Tue	at Manhattan	3 p.m.
April		
1/Sun	Hartford	12 p.m.
7/Sat	St. Francis (N.Y.)	12 p.m.

Women's Tennis

Coach: Mike Guastelle

March		
<i>Southern Trip to Hilton Head, S.C.</i>		
4/Sun	Newberry	4 p.m.
5/Mon	Walsh	4 p.m.
6/Tue	Guilford	12 p.m.
8/Thu	Martin Methodist	12 p.m.
9/Fri	UNC-Pembroke	8 p.m.
Northern Schedule		
16/Fri	at Central Conn.	3 p.m.
22/Thu	Rhode Island	3 p.m.
28/Wed	at Albany	3 p.m.
April		
1/Sun	Hartford	12 p.m.
3/Tue	Siena	3 p.m.
5/Thu	at Connecticut	3 p.m.
7/Sat	St. Francis (N.Y.)	12 p.m.

Men's Volleyball

Coach: Scott Carter

March		
7/Wed	at New Paltz	7 p.m.
9/Fri-10/Sat	at East Stroudsburg Tourn.	TBA
14/Wed	at Scotland National Team	7 p.m.
17/Sat	at Eastern Mennonite	1 p.m.
18/Sun	at George Mason	2 p.m.
21/Wed	Mt. St. Vincent	7:30 p.m.
24/Sat	Wentworth	3 p.m.
29/Thu	Ramapo	7 p.m.
31/Sat	at Roger Williams	6 p.m.

Home events in bold.

Winter Sports Results

	Conference			Overall		
	W	L	T	W	L	T
Men's Basketball	6	14		7	21	
Women's Basketball	11	7		15	14	
Men's Ice Hockey	11	10	5	14	12	5
Women's Ice Hockey	10	7	2	12	11	2
Women's Swimming	0	3		1	10	
Men's Volleyball	0	0		19	4	
Wrestling	5	1		11	8	