

THIRTY-THIRD
COMMENCEMENT

May 23, 1999



SACRED HEART UNIVERSITY

THIRTY-THIRD
COMMENCEMENT

*The Twenty-Third of May
Nineteen Hundred Ninety-Nine
One O'Clock
Fairfield, Connecticut*



Board of Trustees

Chairman

Most Rev. Edward M. Egan, J.C.D.

Vice Chairman

Robert J. Matura

Secretary

Robert L. Julianelle, J.D.

Treasurer

James J. Costello

William J. Conaty

A. Joan Connor

Victor R. Coudert Jr.

Michael E. Dailey '75

Armand R. Fabbri Jr.

Rev. Msgr. William Genuario, J.C.D.

Dean P. Gestal

Michael J. Kinney '72

John A. Klein

Christopher K. McLeod

Paul S. Miller

Gloria Paul

William V. Roberti '69

Ralph L. Rossi

Joseph D. Roxe

Lois Schine

Robert D. Scinto '71

Doris Smith, S.C.

Lloyd Stauder

Egide Thein

Rev. Msgr. Kevin W. Wallin

Rev. Msgr. Francis C. Wissel, D.Min., Hon.

Alumni Representative

Donna J. Blewitt '76

Trustees Emeriti

Prescott S. Bush Jr.

J. Edward Caldwell, J.D.

David E. A. Carson

Robert Delancy, L.L.B., C.P.A.

Lester J. Dequaine, L.L.B.

Charles M. Grace

Dr. Romelee Howard

Robert W. Huebner

Thomas L. Kelly

John McGough

Manning Pattillo, Ph.D.

Mary Ann Reberkenney

Carmen A. Tortora Sr.

Alma Mater



1. Hail to thee, our Al - ma Ma - ter, Pi - o - neers are we.
2. Al - ma Ma - ter, grant us wis - dom, Heart and mind re - new.



1. Sa - cred Heart's proud sons and daugh - ters Stand in u - ni - ty.
2. Love and Truth, her guid - ing vi - sion, Hail to S - H - U.

CHORUS



Swell the cho - rus, praise her glo - ry On our fields and in these halls.



Loy - al hearts pro - claim her __ sto - ry. Red and White o'er all.

© Copyright 1999, Sacred Heart University, Fairfield, CT
Words: Ralph L. Corrigan, et al. Music: Margaret A. Palliser, O.P.
All rights reserved.

Music

Nutmeg Brass

Graduation Choir

under the direction of

Dr. Margaret A. Palliser, OP

Director, Center for Mission Education and Reflection

Program

Processional

Virginia F. Zic, M.F.A.
Professor of Art
Mace Bearer and Marshal

Master of Ceremonies

Thomas V. Forget, Ph.D.
Interim Vice President
for Academic Affairs

National Anthem

Invocation

Patricia A. Leonard-Pasley, M.T.S.
Campus Minister

Presidential Welcome

Anthony J. Cernera, Ph.D.
President

U

Conferral of Honorary Degrees

President Cernera

Dolores E. Cross, Ph.D.

Citation read by Brian Perkins, Ed.D.
Assistant Professor of Education

Hood vested by A. Joan Connor, *Trustee*

Alice Gallin, O.S.U.

Citation read by Michelle Carbone Loris, Ph.D.
Professor of English

Hood vested by Rev. Msgr. Kevin W. Wallin, *Trustee*

Leland R. Roberts

Citation read by Donald Brodeur, Ph.D.
Professor of Psychology

Hood vested by Robert J. Matura, *Trustee*

Wilmot F. Wheeler, Jr.

Citation read by Theresa L. Gonzales, Sc.D.
Academic Director of Graduate Programs
College of Business

Hood vested by Christopher K. McLeod, *Trustee*

Commencement Address

Dolores E. Cross, Ph.D.

Presentation of Candidates for Graduate Degrees

Dr. Forget and Deans of the Colleges

Presentation of Candidates for Undergraduate Degrees

Dr. Forget and Deans of the Colleges

Conferral of Degrees and Presentation of Diplomas

President Cernera

Alma Mater

Benediction

The Most Rev. Edward M. Egan, J.C.D.
Bishop, Diocese of Bridgeport
Chairman, Board of Trustees

Recessional

Dolores E. Cross, Ph.D.



Dolores E. Cross attributes much of her later success in life to her positive experience at Seton Hall University, where she earned her bachelor's degree in elementary education. Dr. Cross was an urban wife and mother who balanced family responsibilities with part-time and full-time employment and a full course load. Today, she acknowledges a debt of gratitude for the university's "committed leadership and supportive environment." Her career and personal life have both been marked by a fierce determination that others would share those same advantages.

Dr. Cross went on to earn her master's from Hofstra University and her Ph.D. in education from the University of Michigan. From the mid-70s until 1990, she was a senior academic and administrative leader. She was also president of the New York State Higher Education Services Corporation, a state cabinet-level position, and a senior administrator at the University of Minnesota.

Under her distinguished leadership as president of Chicago State University, from 1990 to 1997, CSU became the fastest-growing and most cost-effective university in Illinois. The number of degrees granted increased by 30 percent, and the university completed more than \$33 million in new construction.

Earlier this year, Dr. Cross was named the first female president of Morris Brown College in Atlanta. The school was founded in the late nineteenth century by former slaves, under the sponsorship of the African Methodist Episcopal Church.

The recipient of eight honorary degrees, Dr. Cross currently chairs the American Association of Higher Education.

In recognition of her extraordinary vision and her tireless pursuit of excellence, both for herself and for others, Sacred Heart University brings honor to itself on this 23rd day of May, 1999, as it confers the degree, Doctor of Humane Letters, *honoris causa*, on

Dolores E. Cross

Alice Gallin, O.S.U.



Sister Alice Gallin is an educator, first, last, and always. For more than half a century, she has dedicated her formidable intellect and boundless energy to the pursuit of learning. At an age when many of her peers have chosen a well-deserved retirement, Sister Alice is a visiting research scholar at the Catholic University of America and putting the finishing touches on her sixth major book, *Negotiating Identity: Catholic Higher Education Since 1960*.

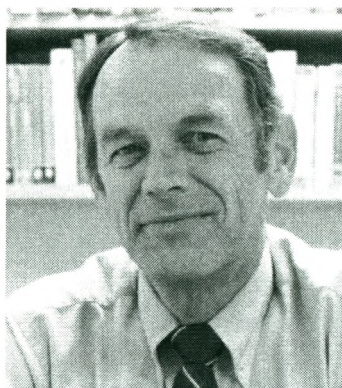
She professed her vows as a member of the Order of St. Ursula in 1948. Her early career included teaching in both public and private schools as well as three years of research analysis for the Military Intelligence Service in Washington, D.C. The recipient of a bachelor's degree from the College of New Rochelle and a master's from Fordham University, she earned her Ph.D. from the Catholic University of America in 1955.

For 26 years, she was a vital part of the College of New Rochelle as a professor of European history, a department chair and dean of students. She also served as a trustee for a total of 20 years. In 1976, she began a distinguished affiliation with the Association of Catholic Colleges and Universities, serving as executive director from 1980 until 1992. She was later the interim president of St. Bonaventure University and a visiting professor at St. Louis University. A world traveler and tireless scholar, she has been honored by 18 colleges and universities with honorary degrees.

In recognition of her extraordinary life and singular contributions to the cause of Catholic higher education, Sacred Heart University brings great honor on itself this 23rd day of May, 1999, by bestowing the degree, Doctor of Humane Letters, *honoris causa*, on

Sister Alice Gallin

Leland R. Roberts



The history of Sacred Heart University and the distinguished career of Leland R. Roberts are nearly inseparable, and Professor Roberts leaves the University a much stronger and more vibrant place because of his countless contributions. A son of the heartland, he received his bachelor's and master's degrees in music education from Kansas University. Professor Roberts pursued advanced musical study at the University of Iowa, and he was twice named a Fellow of the National Endowment for the Humanities. He has spent virtually his entire life learning more of the art and craft he so dearly loves.

After teaching in both the Denver public school system and at St. Benedict's College in Atchison, Kansas, Mr. Roberts headed east to Sacred Heart University. He has been music director and professor of music here since 1966 and has also chaired

the University's Faculty of Humanistic Studies and its Department of Art and Music.

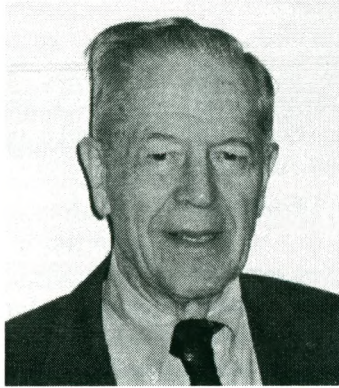
Over the course of 33 years, Professor Roberts has directed the chorus, the chamber orchestra, the early music ensemble and the chamber music ensemble and is well known in the region for his gifted performance on the clarinet.

Through his long tenure with the University, and in conjunction with his wife, Monica, who is also retiring from the University this year, he has touched the lives of literally thousands of students.

Sacred Heart University does great honor to itself in recognizing this dedicated teacher and remarkable friend this 23rd day of May, 1999, by conferring the degree, Doctor of Humane Letters, *honoris causa*, on

Professor Leland R. Roberts

Wilmot F. Wheeler, Jr.



Wilmot Fitch Wheeler, Jr., has matched his success as a leader of business and industry with a deep concern for the needs of others. A Fairfield native, he attended Pequot Elementary School here before going on to St. Paul's in Concord, New Hampshire. His college experience at Yale was cut in half by military service during World War II where he participated in the Battles of the Bulge, the Ardennes, and Central Europe and was awarded the Bronze Star for meritorious service. Mr. Wheeler returned to Yale, where he graduated with the Class of 1947. More than 50 years later, he is still an active learner and an avid student of theology at Sacred Heart University.

In 1951, Mr. Wheeler joined American Chain and Cable, where he worked for 25 years, serving as chairman and chief executive officer from 1966 to 1976. He then joined Dollar Dry Dock Bank in New York City, where he became chairman and chief executive officer.

Mr. Wheeler has been a director of companies such as American Mutual Liability Insurance, Pratt-Read Corporation, and People's Bank in the United States, and several in Canada, Mexico, Spain, and Italy. Further, he has served as a trustee of the American Farm School, Bridgeport Hospital, and the University of Bridgeport. Mr. Wheeler is presently chairman of the board of the Jelliff Corporation in Southport and active on the boards of the William T. Morris Foundation, Ohio Fabricators, and the Wilmot Wheeler Foundation. He has been a dedicated supporter of the mission and work of Sacred Heart University and a true friend to numerous agencies for good in the Greater Fairfield County area.

As a mark of the esteem in which he is so widely held and in recognition of his lifelong record of accomplishment and good will, Sacred Heart University brings itself great honor this 23rd day of May, 1999, in bestowing the degree, Doctor of Laws, *honoris causa*, on

Wilmot F. Wheeler, Jr.

Academic Dress

Tradition holds that the cap and gown were first used in ancient Greece when only youths of wealthy parents or those with patrons attended school. The wise teachers of the time believed that fine clothing and jewels should not be worn by the scholar but rather, that the scholar should wear the garments of the worker.

In the United States, the gown commonly worn for both the associate's and bachelor's degrees has pointed sleeves (with a slit for the arm). It is designed to be worn closed. The gown for the master's degree has an oblong sleeve, open at the wrist. The gown for the doctoral degree has bell-shaped open sleeves. All gowns are black and without trimming with the exception of the doctoral gown, which normally is trimmed with velvet, has three bars or chevrons on the sleeves and may be in distinctive color(s) governed by the school granting that degree. The master's and doctoral gowns may be worn open.

Upon graduation, students of old carried a mortarboard showing them to be masons

of the future destined to build empires or cities or fountains of wisdom on the firm foundation of knowledge. To this day, graduates wear mortarboard caps and gowns, symbolizing that they are builders of the future.

The history of the hood, with which degree recipients are invested, dates back to 13th century England. Whether its origin is ecclesiastical or secular has never been settled. Hoods are two and one-half feet long for the associate, three feet for the bachelor's, three and one-half feet for the master's and four feet for the doctor's degree. The hood is lined with the colors of the institution — red and white, in the case of Sacred Heart University. The color of the trim indicates the academic degree — white for arts, letters and humanities (B.A.), golden yellow for science (B.S.).

The hoods of those with graduate degrees, as well as the tassels on the mortarboards of the undergraduates, are often in the color associated with the academic field of specialization, as follows:

White
*Arts, Letters
and
Humanities*

Drab
Business

Light Blue
Education

Brown
Fine Arts

Purple
Law

Crimson
Media Studies

Pink
Music

Apricot
Nursing

Dark Blue
Philosophy

Golden Yellow
Science

Citron
*Sociology
Social Work
Criminal Justice*

Scarlet
*Theology
Religious Studies*

University History

The Seal

The official seal of Sacred Heart University was introduced on July 22, 1963. It was designed by Frank Sullivan, an art teacher in New Jersey. Sullivan had been commissioned to design the seal by his friend, Dr. Maurice J. O'Sullivan, Sacred Heart University's first academic dean. The original pen and ink hangs in the diocesan museum at The Catholic Center in Bridgeport.

The original seal consists of a shield, a surrounding wreath of hearts and flowers, the symbol of the Sacred Heart, and the inscription "Universitas Sacri Cordis" in large letters on the outside of the seal and "Dioecesis Bridgeportensis, 1963" on the inner circle.



The shield consists of a dexter — the right hand side of a shield (the left as seen by the viewer) — and a sinister, the left hand side of a shield. The dexter impalement bears the jurisdictional arms of the Diocese of Bridgeport. The bridge above waves of flowing water affords an apt expression of the name of the diocese that encompasses Fairfield County, Connecticut, where Sacred Heart University is located. The bridge represents service, which forges strong bonds of understanding and unity between diverse constituencies, while the vivifying water symbolizes the "port" by which new knowledge and ideas energize the scholars who commit themselves to the disciplines of academic inquiry. The Cross of Our Faith above the bridge dignifies the other symbols and identifies the

University as a community that celebrates the richness of the Catholic intellectual tradition.

The sinister impalement displays the personal coat of arms of The Most Rev. Walter W. Curtis, S.T.D., the founder of Sacred Heart University and the second Bishop of the Diocese of Bridgeport. The central checkered bar, taken from the Curtis family coat of arms, suggests the collaborative nature of the learning community in which each individual member contributes to the integrity of the whole. The two diamond-shaped lozenges, taken from the Costello family shield to honor the Bishop's mother, are placed in the upper portion to highlight the University's two

most precious treasures: Love, the compassion of God as symbolized in the Sacred Heart of Jesus, and Truth, the goal of all scholarly activity. The University shield also honors Mary, the Seat of Wisdom, by including the crescent moon, which is the symbol of Our Lady under the title of the Immaculate Conception, chosen to signify the years that Bishop Curtis spent as a professor of moral theology at Immaculate Conception Seminary.

Sometime in the early 1980s, the wreath of hearts and flowers was changed to a simple wreath of laurels, probably the result of a liberal designer's handiwork to make the seal more readable in a reduced size.

The Name

Sacred Heart University was founded in 1963 by the Most Rev. Walter W. Curtis, S.T.D., the second Bishop of the Diocese of Bridgeport, to provide an institution of higher education that would serve the needs of the people of the diocese and region, regardless of their sex, race, creed or religion.

In October 1962, Bishop Curtis announced both the plan to open a college the following September, and its name, "Sacred Heart." The choice of name had a dual origin: it was the name of the Bishop's first pastorate in Bloomfield, N.J., and was a pledge from the Bishop attesting to the value of such an institution.

The Mission

Sacred Heart University is a co-educational, independent, comprehensive institution of higher learning in the Catholic intellectual tradition whose primary objective is to prepare men and women to live in and make their contributions to the human community.

The University aims to assist in the development of people who are knowledgeable of self, rooted in faith, educated in mind, compassionate in heart, responsive to social and civic obligations, and able to respond to an ever-changing world. It does this by calling forth the intellectual potential of its students, nurturing each one's spiritual and moral growth, and deepening in them a sense of social responsibility. The University is committed to combining education for life with preparation for professional excellence.

Sacred Heart University is Catholic in tradition and spirit. As a Catholic university, it seeks to play its appropriate role in the modern world. It exemplifies in its life the Judeo-Christian values of the God-given freedom and dignity of every human person. Inspired by the ecumenical spirit of the Second Vatican Council, Sacred Heart University welcomes men and women of all religious traditions and beliefs who share its concerns for truth, scholarship, the dignity of the human person, freedom, and the betterment of human society. It values religious diversity as enhancing the University community and creating opportunities for dialogue in the common search for truth. Through its curricular and co-curricular activities and campus ministry programs, the University provides the context in which students have the opportunity to appropriate in a critical fashion their own religious traditions.

Sacred Heart University challenges its students to think critically, analyze carefully, evaluate with a sense of justice and proportion, and convey conclusions in an intelligible and artic-

ulate fashion. The University provides the environment in which its students can develop the aesthetic dimension of life by nurturing their abilities to imagine, create and appreciate. It assists students to acquire a rich understanding of their own cultural and family heritages so as to assume their responsibilities as conveyors and creators of culture and family.

As a community of teachers and scholars, Sacred Heart University exists for the pursuit of truth. It joins with other colleges and universities in the task of expanding human knowledge and deepening human understanding. It encourages and supports the scholarly and artistic work of its faculty and students. Further, it has a responsibility to share its resources and its special gifts and talents for the betterment of the human community. All members of the University community are strongly encouraged to participate in the wider community through service to others, especially the poor.

From its founding, the University has been recognized for its caring approach to students. This approach expresses the University's belief that each student is born with a unique set of qualities and skills. It respects the personal and academic freedom of each of its members while at the same time fostering a genuine experience of community. By so doing, it creates the environment in which each person in the University shares in common goals and a common commitment to truth, justice and concern for others.

The Mace

During the Middle Ages, the wood mace clad in metal was an effective weapon in battle, but as newer and more powerful military arms developed, it was transformed into a symbol of dignity and authority.

The earliest ceremonial maces were borne by bodyguards of 12th century English and French kings; by the end of the 16th century, they were used widely by officials of English cities and towns. Today, the use of the ceremonial mace is found in the British House of Parliament, carried before ecclesiastical dignitaries and in university and college commencements and convocations.

The Sacred Heart University Mace traditionally is carried by the senior tenured faculty member and represents the President's responsibility as the chief academic and administrative officer of the University. Commissioned by President Anthony J. Cernera, Ph.D., to mark the University's 25th commencement, the mace is made of rosewood, mahogany, walnut and bronze.

Graduate Academic Awards

College of Arts and Sciences

Chemistry

David Breiner

Academic Excellence

Computer and Information Sciences

Richard Mathes

Academic Excellence

Joseph A. Visintainer

Academic Excellence

Religious Studies

John Bakes

Academic Excellence

College of Business

Business Administration

Dupre Benning

Dean's Leadership

Kelly Diaz

Academic Excellence

Sheryl Feldheim

Academic Excellence

Peter Gomis

Academic Excellence

Laurence Gricourt

Academic Excellence

Brian Ihlefeld

Academic Excellence

Jennipher Jaynes

Dean's Leadership

Paul Moriber

Academic Excellence

Stacia Nicholson

Academic Excellence

Stephanie Valeiko

Academic Excellence

Eric Zwickel

Dean's Leadership

Scholarship Recipients

Jhasson V. Brooks

CPTA Minority Scholarship Award

Crista J. Forstrum

CPTA John O'Donnell Memorial Scholarship

College of Education and Health Professions

Education

Jeffery Alterman	<i>Outstanding Performance in Field Placement</i>
Jason Bitgood	<i>Dean's Leadership</i>
Elizabeth Buswell	<i>Thomas J. Pepe Award for Educational Leadership</i>
Carl Charles	<i>Outstanding Administrative Practicum</i>
Richard Clyborne	<i>Outstanding Master's Project</i>
Antonio Coccoli	<i>Academic Excellence</i>
Debra Fratoni	<i>Outstanding Performance in Field Placement</i>
Kristen Frattarola	<i>Outstanding Master's Project</i>
Tameka Grant	<i>Dean's Leadership</i>
Patrice Ivan	<i>Thomas J. Pepe Award for Educational Leadership</i>
Lori Beth Melnikoff	<i>Outstanding Performance in Field Placement</i>
Karen O'Neill	<i>Outstanding Research</i>
William Brooks Parmelee	<i>Outstanding Master's Project</i>
William A. Rice	<i>Outstanding Master's Project</i>
Jennifer Rodgers	<i>Outstanding Performance in Field Placement</i>
Amy Salemma	<i>Outstanding Research</i>
Mary Lou Blanchette Smith	<i>Academic Excellence</i>
Deborah Veronneau	<i>Outstanding Administrative Practicum</i>
Christopher Winters	<i>Outstanding Research</i>

Nursing

Mary Jo Felis Davies	<i>Outstanding Thesis</i>
Jill Ely	<i>Outstanding Performance in Field Placement</i>
Anne Fenn	<i>Academic Excellence</i>

Physical Therapy

Kerstin S. Berardino	<i>Academic Excellence</i>
Greg C. Besson	<i>Dean's Leadership</i>
Kimberly A. Carson	<i>Academic Excellence</i>
Scott W. Copeland	<i>Academic Excellence</i>
William J. Daley	<i>Academic Excellence</i>
Lynn A. Deschenes	<i>Academic Excellence</i>
Crista J. Forstrom	<i>Academic Excellence</i>
Leanne Lumbra	<i>Academic Excellence</i>
Elizabeth A. Violette	<i>Academic Excellence</i>

Undergraduate Academic Awards

College of Arts and Sciences

Department of Art and Music

Art

Medal of Excellence
Certificate of Excellence
Certificate of Excellence

Jennifer Bilacic
Kathrine Hippeli
Melynda Nhataavong

Department of Biology

Medal of Excellence

Sara Elizabeth Ignudo

Department of Chemistry and Physics

Chemistry

Medal of Excellence
Certificate of Excellence

Peter Korakas
Susan Chacko

Department of Computer Science

Computer Science

Medal of Excellence
Certificate of Excellence

James E. Kish
Adrienne Oshman

Programming

Medal of Excellence

Daniel Arnold

Department of History and Political Science

Global Studies

Medal of Excellence
Certificate of Excellence

Antonio Guimaraes
Christina Sembos

History

Medal of Excellence
Certificate of Excellence

Louis Monaco
Charles R. Miller

Political Science

Medal of Excellence
Certificate of Excellence

Cindy Lisa
Susanne Lee

Department of Language, Literature and Media Studies

English

Medal of Excellence
Certificate of Excellence
Certificate of Excellence
Certificate of Excellence

Jennifer LaBonte
Amy Finkle
Jennifer Hudson
Suzanna Pollak

Media Studies

Medal of Excellence
Certificate of Excellence
Certificate of Excellence

Laurie Freddino
Marianne Cardo
J. Maxwell Cook

Spanish

Medal of Excellence

Karen Bagley

Department of Mathematics

Mathematics

Medal of Excellence
Certificate of Excellence

Paula Batista
Brandon Lyons

Department of Philosophy and Religious Studies

Philosophy

Medal of Excellence
Certificate of Excellence

Louis Howe
Michael Cuddy

Department of Psychology

Medal of Excellence
Certificate of Excellence

Marc J. Tobin
Jessica L. Perry

Department of Social Sciences

Criminal Justice

Medal of Excellence
Certificate of Excellence
Certificate of Excellence

Nicholas P. DeCesare
Sarah E. Hanna
Emily Rubin

Social Work

Medal of Excellence
Certificate of Excellence

Kristina L. Jones
Lisa Thurston

Sociology

Medal of Excellence
Certificate of Excellence

Elizabeth A. Wilson
Brian A. Jasgur

Honors Program

Christine Maursky & Heather Pulsifer

College of Business

Department of Accounting

Medal of Excellence

Holly H. Ragoza

Certificate of Excellence

Mary E. Davis

Department of Economics

Medal of Excellence

Joseph N. DiVito

Department of Finance

Medal of Excellence

Gina A. Squara

Certificate of Excellence

Nathan Risley

Legal Assistant Program

Legal Administration

Medal of Excellence

Nancy C. Minogue

Paralegal Studies

Medal of Excellence

Elizabeth Sandberg

Certificate of Excellence

Deborrah Massiah

Department of Management

International Business

Medal of Excellence

Renata Milewski

Certificate of Excellence

Kathryn Lukach

College of Education and Health Professions

Department of Education

Sandra Nobili Awards

Allison Russo

Leslie Watton (*Class of 2000*)

Department of Nursing

Medal of Excellence

Virginia A. McLevy

Certificate of Excellence

Kathryn M. Imperato

Florence Nightingale Award

Rebecca Orem

Respiratory Care Program

Medal of Excellence

Robert Gondor

Certificate of Clinical Excellence

Edwin Brown

University College

General Studies

Baccalaureate Program

Medal of Excellence
Certificate of Excellence

Lois A. Ciccarelli
Catherine Meister

Associate in Arts Degree Program

Medal of Excellence
Certificate of Excellence

David L. Georgette
Richard P. Abate, Jr.

Honor Societies

Alpha Kappa Delta

International Sociology Honor Society

Amanda Bertorelli
Brian A. Jasgur
Elizabeth A. Wilson

Alpha Phi Sigma

Criminal Justice Honor Society

Nicholas P. DeCesare
Kaitlyn M. Flavin
Christopher J. Geissler
Daniel J. LaMonica
Keri A. Loper
Brian C. McGrath
Michael W. Percival
Mayra M. Rios
Michael J. Rooney
Colin R. Ruane
Susan E. Thomas
Neil J. Welch

Alpha Sigma Lambda

National Continuing Education Honor Society for Part-Time

Undergraduate Adult Students

Richard P. Abate, Jr.
William W. Allyn, III
Linda Anderson
Margaret Marie Arena
Kathleen C. Bailo
Kevin J. Barry
Lenore Bjorlin
Robyn Bowers
Roberta G. Boyle
Lisa Francine Brevard
Kelly A. Charkales
Lois A. Ciccarelli
Shauna N. Clyburn
Winston Collins
Patricia C. Daly
Mary-Alice P. Decossard
Carmeline N. DeGennaro
Diane DeLuca
Cheryl A. Doherty

Paul Dudeck
Christine Lynn Duggan
Anita Lynn Dulude
Yvonne Durrant-Baker
Catherine M. Ellis
Kimberly T. Ferris
John Michael Fiedler
Julie Marie Flannery
Gayle Forgette
Amy L. Fox
Frances M. Gargano
Kristin J. Gasso
Marybeth Y. Geronimo
Josephine S. Googin
Donna B. Greenfield
Dawn S. Gresik
Victoria J. Gruber
Chad J. Harris
Thomas F. Hickey
Lena A. Higgott
Linda P. Hubbard
Kathryn M. Imperato
Kathleen Claire Jahn
Christina Jarvis
Sabine Jean-Paul
John C. Jennings
Maryanne Macari Jobson
Kimberly Karl
Catherine E. Katrenya
James E. Kish
Sandra M. Laliots
Lori A. Lampman
Heather Lamson
Linh Le
E. Bonnie Lindsay
Kristine Lohrman
Marva Lupe
Marcy Elizabeth McCormick
Jocelyn N. McFarland
Deborah A. McGuigan
Virginia A. McLevy
Catherine M. Meister
Jennie G. Melendez
Maureen Elizabeth Mengold
Scott Alexander Micunek
Charles R. Miller
Dan Miller
Martha A. Miller
Adele Elizabeth O'Brien
Christina Ochsendorf
Claudia Ochsendorf
David J. Ontko

Gabrielle Anna Parisi
 Margaret J. Parniawski
 Constance G. Pesavento
 Marie E. Phillips
 John Porter
 Mary Georgette Priest
 Joseph Ragonese
 Kathleen E. Rainey
 Cynthia Deneice Rankins
 Darryl Razzaia
 Joan C. Renkowsky
 Marion A. Rodriguez
 Jean Rotini
 Luke Gianni Sessa
 Janice Ann Sienkiewicz
 Lynnae Ann Spencer
 Tammy M. Stiliha
 Elicia A. Sullivan
 Susan M. Tocco
 Nanette Torres
 Linda S. Verret
 James M. Viadero
 Jill Elizabeth Visinski
 Mary Lou Weeks
 Dawn Marie Westlund
 Warren White
 Stan Wolpiuk, Jr.
 Peggy B. Zalkind

Delta Epsilon Sigma

National Scholastic Honor Society

Jessica Andrillo
 Margaret Marie Arena
 Joseph Bacoulis
 Paula Freitas Batista
 Jennifer Bilacic
 Maureen Briere
 Amy Cameron
 Marianne Cardo
 Susan Chacko
 Carmela Chisholm
 Patricia Clarke
 Sara Ann Coppola
 Heather Correll
 Delorece Davis
 Mary Davis
 Nicholas P. DeCesare
 Carrie Demirgian
 William DiStasi
 Shaena Doherty

Yvonne Durrant-Baker
 Danusia Dzierzbinski
 Amy Finkle
 Laurie Freddino
 Frances Gargano
 Andrew Gootman
 Roxanne Gregson
 Antonio Guimaraes
 Lena Higgott
 Melissa Hopkins
 Jennifer Hudson
 Sara Elizabeth Ignudo
 Kathryn M. Imperato
 Christine Jarvis
 Keri Jenkins-Smith
 Kristina Jones
 Jennifer Kasubinski
 Kristen Kelley
 James E. Kish
 Yuko Konishi
 Peter Korakas
 Jennifer LaBonte
 Chantal Lambert
 Cindy Lisa
 Brandon Lyons
 Jennifer Mancuso
 Amber Markure
 Scott Micunek
 Nancy Minogue
 Louis Monaco, III
 Michele Murzak

Kathleen Northrop-Goncalves

Christina Ochsendorf
 Claudia Ochsendorf
 Jessica Perry
 Constance Pesavento
 Myra Pierce
 Joan Renkowsky
 Sharon Parkin Romero
 Jean Rotini
 Becky Roy
 Emily Rubin
 Terrel Scott
 Christina Sembos
 Kerri Skeen
 Heather Spedden
 Gina Squara
 Lisa Thurston
 Marc J. Tobin
 Kristin Visconti
 Elizabeth A. Wilson
 Lisa Yacaviello

Delta Mu Delta

National Honor Society for Business Administration

Stephen Chrisarik
Laurence Gricourt
Kristen Holland
Bennett A. Gluckman

Lambda Beta

National Honor Society for Respiratory Care

Robert Gondorg

Lambda Epsilon Chi

National Paralegal Honor Society

Mary E. Infante
Joyce M. Gindra
Patricia Lebel-Lasse
Deborrah Massiah
Nancy C. Minogue
Michelle Nova
Elizabeth R. Sandberg

Phi Alpha Theta

Phi

Iota Chapter

National Honor Society for History

Tara Auch
Charles R. Miller
Melissa Monsg

Psi Chi

National Honor Society in Psychology

Jessica Andrillo
Margaret Marie Arena
Maureen Briere
Sara Ann Coppola
Carrie Demirigian
Shaena Doherty
Kristen Ferguson
Suzanne Gabriele
Frances Gargano
Megan Gula
Melissa Hopkins
Natalie Jensen
Kristen Kelley

Jennifer Klemets
Chantal Lambert
Gena Laplante
Amanda Limbert
Jennifer Mancuso
Scott Micunek
Jocelyn O'Brien
Christina Ochsendorf
Claudia Ochsendorf
Jennifer Renko
Jennifer Rodi
Lisa Sleeper
Marc J. Tobin
Kristin Visconti
Jason Vogt
Dawn Marie Westlund
Lisa Yacoviello
Heidi Zommerg

Psi Sigma Iota

International Foreign Language Honor Society

Elina Alves
Karen Bagley
Cyrus Bartolome
Marianne Cardo
Carmela Chisholm
Ellen Favreau
Amanda Gaud
Antonio Guimaraes
Jennifer Hudson
Sara Elizabeth Ignudo
Daniel LaMonica
Lien K. Le
Maria-Paula Morales
Jessica Nieradka
Jessica Perry
Becky Roy
Christina Sembos
Jeremy Stevens
Eneida E. Wolfeg

Sigma Theta Tau

International Nursing Honor Society

Maria Adamo
Melissa Allen
Cristina Dos Santos
Cynthia Ianuzzi
Kathryn Imperato
Jennifer Kennedy
Kendra Laptik
Rebecca Orem
Virginia A. McLevy
Margaret Parnawski
Doreen Walsh

Candidates for Graduation

College of Education and Health Professions

Professional Certificate

Administration

Dolores Rivera Bambus
Peter John Bass Jr. #
Carl P. Charles
Susan C. Conway-Fenn #
Cynthia Cassada DeLeon
Joan Frances DiMatteo *
Maria Goretti Fiorino #
Laura M. Greenstein *
Elise I. Guari #
Lee Ann Hulten
Beth E. Keenan
Daniel M. Lein #
Joseph P. Madaffari *
Charles E. Marcotte Jr. #
Elizabeth Sprano McGrath
Brian Patrick Murphy #
Karen Ann O'Neill
John Gary Olivieri *
Judith H. Quinn

Jennifer Janik Reynolds #
Jean B. Riley #
Lawrence H. Roberts #
Deborah Elizabeth Scott #
Susan D. Skrmetti
Nancy Gratson Souza #
Jean E. Stamato #
Joseph P. Tomanelli #
Deborah A. Veronneau
Jaye P. Wilson #
Christopher S. Winters
William Shane Winters #

Advanced Teaching

Donald Sayre Bodwell *
Antoinette P. Bruciati
Freda Kral Gianakos *
Dale G. Goodwin *
Alicia A. Luther *
Darlene Christine Williams *

- | | |
|-----|---|
| * | August 1998 Graduate |
| # | December 1998 Graduate |
| ** | MBA awarded in Luxembourg
June 1998 |
| (c) | <i>Cum Laude</i> |
| (m) | <i>Magna Cum Laude</i> |
| (s) | <i>Summa Cum Laude</i> |
| (h) | Honors (Honors subject to Final Grades) |

College of Arts and Sciences

Master of Arts

Religious Studies

John C. Bakes II #

Master in Science

Chemistry

David A. Breiner (h)

Keith J. Castor *

Jimmy Ma *

Carl Weigand * (h)

Master in Science

Computer Science

Barbara Chatfield Caserta #

✓ Bruce E. Desimas II * (h)

Robert Timothy Leedy Jr. (h)

Richard B. Mathes (h)

Paul Christopher Robinson #

Joseph Adolph Visintainer (h)

August 1999

Candidates in Attendance

Shripad S. Kanaskar

College of Business

Master in Business

Administration

Jose Almonte #

Arizbet Arredondo #

Feroze Aslam *

Jackson Paul Baptiste #

Tracy M. Barbato

Karen Quinn Beeman *

Shane A. Behrle

Maria Benedetti # (h)

Dupre B. Benning

John Clayton Boras Jr.

Alexis R. Bouzoucos *

Robin L. Bowers *

Joseph James Butler

Linda P. Campanelli

Mark D. Chabra *

Richard Anthony Chelednik *

Marybeth Chinnici *

Kevin P. Clare #

Mark S. Davis

Michael B. Dee

Lonnie M. Dervil

Kelly Grady Diaz (h)

Michelle Ann Dota #

William P. Dunsmore

Lawrence W. Egan #

Keith Joseph Fanneron

Thomas Christopher Felner *

Chris Jerome Felsmann #

David Paul Florio #

Aaron Foust

Martin Blaise Frazier *

Roman Frymus # (h)

David Scott Galligani

Jennifer Ann Garcia *

Jayne Garcia-Ives #

Paul Richard Garrett

Helen T. Garwacki *

Brigitte Jacqueline Girard

Bennett Alan Gluckman (h)

Peter F. Gomis (h)

Karen E. Gooley * (h)

Haile Mariam Goshu *

Kenneth Mark Greene

Odetta Hanna
 Gregory F. Harla #
 Jennifer Harris
 Christine Hartmann *
 Brian Stephen Harvey *
 Pamela Morgan Hickey *
 Wendy Vanessa Hopkinson # (h)
 Brian C. Ihlefeld (h)
 Piera Iori *
 Curtis Irby *
 Sung-Wook Jang *
 Camille M. Jimenez #
 Carla Marie Johns #
 Dawn Spring Juricic * (h)
 Robert John Kane *
 Vickie Katsetos #
 Melanie McNichol Keefe
 William Andrew Kessler *
 William M. Kiedaisch *
 Dawn Sferra Klang
 Gregg Charles Krehel #
 Scott G. Kreitler *
 Joseph V. Krekoska *
 Daniel LaDore, Jr.
 Glenn L. Laudenslager, IV
 Carlo Leone #
 Edith Levin-Novik # (h)
 Jennifer A. Lutter * (h)
 Durval T. Machado Jr. (h)
 Joseph Jackie Maillet
 Valerie Ann Mason * (h)
 Leon Mathieu **
 Julie Beth Matthews
 Daniel P. McCarthy
 Paul M. McManus, Jr.
 Trina Milito
 Valerie A. Moger * (h)
 Michael William Moran * (h)
 Andrew Fitzgerald Morris *
 Khady Ndiaye #
 Stacia T. Nicholson # (h)
 Cherida L. Nodebe *
 Jean-Luc Joseph Nosbusch **
 Timothy M. O'Brien
 Mary Ann O'Connor #
 Katina Angelos Papademetriou #
 Steven J. Paravati *
 Robert Parisi * (h)
 Laura J. Patterson *

David Perrotti *
 Kelly A. Plunkett *
 Michael George Raduazzo
 Diana Ramos
 Ruth Richards #
 Gretchen Roick *
 Judith F. Cajkowski Rovinelli #
 Stephen Anthony Ruiz *
 Kelly Cort Russell *
 Robert J. Santore
 Helen Elizabeth Scala *
 Anna Scaramuzzo
 Theresa Marie Scinto * (h)
 Elizabeth I. Seeds #
 Eileen Beth Sheridan
 Jennifer Ann Shivy #
 Jeffery Morris Smith (h)
 Lisa A. Perschino Smith * (h)
 Lisa Beth Smith (h)
 Stephen J. Sullivan #
 Robert Taylor (h)
 Antonette Terenzio *
 Pasquale Tomaino *
 Sherri I-Ping Ton
 Elisa Tristancho *
 Laura A. Underkofler # (h)
 Stephanie E. Valeiko (h)
 David P. Van Wees
 David L. Vandine *
 Janet M. Vasil
 Kim Elizabeth Venezia * (h)
 Trevor L. Viechweg
 Joseph Violetta Jr. *
 Diane Violetta *
 Daniel Vitek #
 Kenneth D. Walker * (h)
 Pauline Elizabeth Wallner *
 Margaret A. Walsh *
 Ze Wang #
 Sophia Washington *
 Zhao-hui Wei #
 David Wendland
 James G. Westgate
 Antonietta Williams # (h)
 Laurie A. Wirth *
 Johnny W. Wright *
 Andrew M. Yee #
 Joseph J. Zephirin #
 Jennifer Ann Zupcoe * (h)

June 1999 Luxembourg Program

Candidates in Attendance

Diego Arias Carballo *

Bernardo Mediana *

Gustavo Jorge Rodrigues *

Eric Zwickel *

August 1999

Candidates in Attendance

Timothy Bryan Adanti

Robert W. Andrea

Scott Arnold

Joseph M. Azary, III

Bruce S. Berkeley

Robert M. Collins

Timothy J. Crader

Anthony P. DiCocco

Kwamie O. Dunbar

Wendy-Anne Melville Falconer

Sheryl Andi Feldheim

Gary Alan Gold

Laurence Gricourt

Jean-Gael Gricourt

Kristin Van Wagener Holland

Cynthia M. Istvan

Jennipher A. Jaynes

Richard LoCicero

Robert Damien Lombardi

Julie Marini

Brian Robert McClain

Erika Jeanne Miller

Tara A. Miller

Mary Ann Mosa

Michael F. Moylan

Piety Nadro

Margaret J. Olinger

Hernando A. Palacio

Ann Marie Perec

Hugo E. Pinzon

Michael John Roche

Kelly Ann Russo

B. Bruce Tolle Jr.

Richard A. Urban

Robyn L. Whittemore

College of Education and Health Professions

Master of Arts in Teaching

Evelyn F. Alicea #

Jeffrey Philip Alterman

Deborah R. Apicella-Magrone

Norma Bahlmann-Young

Toni Lynn Baldwin

Karen E. Baron #

Jill Baronowski

Kelly Christina Barr *

Nina Maureen Bazinet #

Kim Mitchell Begin *

Wendy Jill Bellefeuille

Jill Marie Benker #

Susan L. Betts

Jason Bitgood

Susan Marie Blum *

Elena M. Bodor *

Michele Bonitatibus *

Michael McDonald Boulin *

Donald Roland Boushee

Deborah E. Boyhen

Amy Beth Broad

Kellie M. Brown *

Michael E. Brown

Sherry Lucy Burns-Tarantino

Garrick S. Campbell *

Timothy Scott Caneen

Colleen A. Carriero *

Amy Lynn Carroll

Danielle Anne Cassidy *

Andrea J. Celentano *

Jeannine Chaber #

Eileen Chapell *

Janine Theresa Chapman *

Shirley G. Cheverie *

Deanna Marie Chuka #

Richard Bruce Clyborne

Antonio Coccoli

Donald G. Concascia *

John Joseph Congdon *

Nancy M. Congdon *

Patricia J. Connolly

Jennifer M. Coutts *

Alberto J. Cruz-Reyes
 Karen Anne D'Ostilio #
 Robert Henry Darby Jr.
 Holly Bennett David *
 Kathleen Elizabeth Dehler *
 Jennifer J. Dekker *
 Thomas Dempsey
 Claudine Therese DeRosa *
 Eleanor Marion Dexter
 Amy J. Dias
 Bonnie Dickinson *
 Deborah Lynn DiPalo #
 Donna F. Dombrowski #
 Linda C. Donnelly *
 Linda Ducay #
 Janine Marie Duda #
 Jennifer Leyden Duguid
 Scott Allan Edwards
 Terry Charles Ellis *
 Amy Beth Espinosa *
 Brian R. Falcone
 Stefanie Michelle Ferri #
 Sandra L. Fisher
 Tara Marie Fisher
 Jennifer Flug *
 Veronica Theresa Francisco
 David M. Frank *
 Sara M. Gagnon *
 Joni F. Gaines
 Michael Patrick Galligan *
 Stephane J. Gauvin
 Jennifer D. Giannino *
 Catherine Mary Giaquinto
 James R. Giudice
 Catherine Rebecca Gold *
 Mirene Irune Gomez
 Mercy Leigh Goodnow *
 Carolyn Rabideau Gorman #
 David Harlan Grace Jr. #
 Earl A. Graham *
 Tameka Grant
 Kara L. Groeschner #
 Scott Matthew Gura #
 Shannon Ann Halpin
 MaryEllen Hames *
 Linda A. Harris *
 Kelly Millar Haughs
 Kathleen Hellrigel *
 Molly Hemenway *
 Kerry Ann Hoffmann *
 Katie Mitchell Holecz

Clementine D. Hollopeter *
 Michele Holt *
 William H. Howard Jr.
 Christopher T. Hunt
 Susan Dianna Ivey
 Jacqueline F. Joyce
 Margaret Mary Joyce
 William A. Kabel II
 Kristen L. Kalm #
 Angela R. Kelley
 Paige Demarest Kellogg *
 Erica J. Kennedy
 Erika E. Kiley #
 Patricia Keane Kimmerling #
 Matthew Joseph Kovachik
 Roberta F. Kovacic #
 Veronica A. Krisavage
 Brett M. Kustigian *
 Jason S. Lambert *
 Kim Katshir Lapolla #
 Nancy K. Larocca #
 Amanda LaSaracina
 Margaret Alice Laursen *
 Sharon L. Lawrence *
 Laura C. Lawton *
 Mary Ellyn Lehner #
 Cara Raymond Logan *
 Brian P. Lorber
 Jodi Lovegrove #
 Linda B. Lovrien
 Paul Lucke *
 Jeffrey Alan Maddalena #
 Maureen Mary Mahoney
 Loretta L. Manske *
 Victoria W. Marcucio
 Tisha Marie Markette *
 Joshua C. Martin
 Thomas G. Mastroianni #
 Heather Mazzone
 Maureen McCarthy #
 Michelle Jill Melson
 Denise Ann Morris *
 Barbara Jean Murawski
 Heather Lynn Murkett *
 Tami Lynn Neville
 Maureen O'Brien Niستمski
 Amy Potter Nixon
 Stacey Lynne Noreika *
 Eileen M. O'Connor
 James J. O'Neil
 Thomas F. O'Neil *

Jessica Marie Olson *
 Christopher G. Onofrio
 Jennifer S. Osowiecki #
 Katherine Janina Palamar
 Christopher James Palmieri *
 Robert Anthony Panucci
 Henry C. Parkinson III
 William Brooks Parmelee
 Michele Parsells-Lathrop
 Lawrence J. Patten II
 Michael L. Pelletier
 Christian Petersen #
 Valerie J. Pichette
 Suzanne Josette Podurgiel
 Dayna Mochelle Poisella #
 Diane Portelance
 Michelle Primavera #
 June M. Quartuccio *
 Denise A. Quatela #
 Kelly Ann Quinn *
 Anne Marie Stapleton Rath
 Erin K. Redican #
 Stacey B. Reilly
 William A. Rice #
 Jill Suzanne Rich #
 Tanya Mina P. Rusanowsky #
 Judith S. Ryan *
 Melissa Anne Sadlon *
 Dorothy A. Saia *
 Josue Saint-Fleur
 Eileen M. Salamon
 Antonella Sanfilippo
 Renee Ann Savoie *
 Sheila Jeanne Scholz *
 Aldith Alicia Scott
 Hiroe Seino *
 Richard C. Seltenreich Jr. #
 Jackie Shanahan #
 Cathleen D. Slattery *
 Kathleen Louise Smith *
 Frederic S. Smith #
 Kimberly R. Snell *
 Heather L. Sniffin #
 Amy Lynn Spaulding
 Cinda M. Spavins
 Michelle Ann Stock
 Tynne A. Straatveit-Kelly *
 James A. Strauss #
 Margaret McCarthy Surat *
 Patricia A. Sutherland

Elizabeth Walker Sutman #
 Jason Swett
 Denise Lynn Swiatek
 Cheryl Ann Syc *
 Christina M. Szpila
 Toni M. Tessier *
 Deborah Rose Testani *
 Jennifer Gail Thompson
 Kimberly Ann Timpany
 Christopher M. Troetti *
 Marialisa Valendra #
 Jennifer Jeanne Vogt
 Mandy A. Wacker *
 Christine Wadsworth *
 Lori Ann Walker *
 Richard Arthur Watt
 David Wilcox *
 Heidi Willie
 Alice Elizabeth Wilson *
 Cynthia J. Wiseman *
 Donald P. Wynn #
 Dawn Yamashita *
 Ann Margaret Zagozan

August 1999

Candidates in Attendance

Monika Balogh
 Judith Green Blumenthal
 Elizabeth Anne Buswell
 Kimberly Ann Buzzell
 Alice L. Fitzgerald
 Kathryn M. Folchick
 Debra L. Fraton
 Jeffrey J. Giovacchino
 Megan Louise Keefe
 Jodi Ann Keller
 Lori Beth Melnikoff
 Asdrubal Luis Paris
 Clare Flanagan Paskale
 Seri Lynn Pedersen Pasmeg
 Robin Ann Purzycki
 Jennifer Raffetto
 Carolyn C. Regensburger
 Carrie A. Sajkowicz
 Nanci Hope Siciliano
 Mary Lou Blanchette Smith
 Rejane Whitehead
 Dana Christine Wilson #

Master of Science in Nursing

Family Nurse Practitioner

Kathleen R. Bonaventura #
Sheryl Louise Brown
Cynthia Pizzi Curto (h)
Jill Ventrella Ely (h)
Gisela Ivette Ibarra
Stacey Ann Kennedy (h)
Kary Ann Krochko * (h)
Deborah Aline Mastriani (h)
Robin Forte McCormack (h)

Master of Science in Nursing

Nursing Administration

Pamela Barnwell-Sanders #
Marlene Beck
Carol A. Cappella * (h)
Sally R. Dalton #
Sheila A. DuBose
MaryJo Paula Felis-Davies (h)
Anne Rutherford Fenn (h)
Brenda J. Ganser (h)
Janet B. Marseglia #
Denise Spinelli *
Donna L. Yasick

Master of Science in Physical Therapy

Michael James Belanger
Kerstin Sienel Berardino (h)
Lynette T. Berger
Greg C. Besson
Richard B. Boulli Jr.
Jhasson Virgil Brooks
Kimberly Anne Carson (h)
Jennifer Lynn Carter
Frank D. Cileno Jr.
Kristin Landry Copeland
Scott W. Copeland (h)
Timothy P. Cousens Jr.
William James Daley (h)
Lynn A. Deschenes (h)
Lorian DiBlasi
Kelly Ann Doyle
Joan L. Dumais
Gregory Edward Dunn
Jonathan J. Eckert
Christopher S. Ficke
Crista Janette Forstrom (h)
Elizabeth Dagney Forstrom
Caroline E. Furtak
Cristine Gangi
Beth A. Huber
Alyson Kiernan
Jeannette Alise Kirrane
Jeanine LeMoigne
Leanne M. Lumbra (h)
James Bernard Markwica
Jeffrey M. McKay
Marcelina G. Paulos
Deborah D. Rovack
Jeffrey Daniel Sabatini
Jill M. Scott
Michelle Lee Scozzafava
Pantea Shahrokhi
Cheryl A. Simmons
Angela Mary St.Louis
Bobbi Lynn Stanislaw
Anthony John Todt
Elizabeth Ann Violette (h)
Richard H. Welsh III
Renata Zujewski

College of Arts and Sciences

Bachelor of Arts

Art

Nancy Chow
Tara S. Deenihan
Kathrine R. Hippeli (m)
Jason Mastrianni
Nobuaki Tsukada *

August 1999

Candidates in Attendance
Yutaka Namioka
Laura Michelle Vardzik

Bachelor of Science

Art

Meredith Anne Betz
Jennifer Bilacic
Rosita Anita Bradshaw
Bertrand Reyes Estrellado *
Richard C. Gore *
Laddavanh Melynda Nhataavong
Fernando C. Nicolai Jr.
Ardel Chemari Manansala Santa Teresa

August 1999

Candidates in Attendance
Jeremy P. Staub

Bachelor of Science

Biology

Eric Adams
Melissa Bailey *
Sean Patrick Ballou #
Karyn Marie Bieglecki
John Keith Campolettano
Peter Handforth Carlow *
Panayiota K. Chirigos

Carmela Elizabeth Chisholm (m)
Christina M. Davilli *
Christopher James Fountain (m)
AnnMarie Franco #
Darby E. Getzewich
Rielle Giannino
Roxanne Gregson (m)
Kevin Paul Hamylak
Jennifer Diana Harding
Jennifer Hauge
Jessica Elisabeth Hellqvist #
Alicia Anne Henderson
Sara Elizabeth Ignudo (s)
Nicholas J. Kramer
Mary Ellen Leen
Colleen Catherine Malone
Amber Marie Markure (m)
Christine Marie Maursky
Seth McCabe #
Audra T. McMahon
Joanne Elizabeth Mele #
Nicole Lynn Menard
Daniel Mondiello
Marissa E. Moore (m)
Aaron John Morey
Emily Brigid Murphy
Soheila Najafzadeh #
Donna Papaleo
Virginia Paridis
Erica Marie Piscatella
Jason Jon Reynolds
Jonathan E Roberto
Steven L. Roy
Wendy Mae Scheer
Adam Joseph Socia
Stacie Ann Stadnicki *
Jennifer M. Sullivan
Raymond D. Turner IV *

August 1999

Candidates in Attendance
Jessica H. Pagnotta
John T. Pirretti

Bachelor of Arts

Chemistry

August 1999

Candidates in Attendance

Jocelyn Lebel

Bachelor of Science

Chemistry

Paul F. Amazan *

Michael Peter Amorando *

Gina Marie Anacone

Susan Chacko (c)

Mulumba Diyoka #

Marcela A. Escobar

Peter Korakas (s)

Kim Lien Le

Bridget Domenica Piccirillo

Brian Raudenbush

Anthony Tedesco Jr.

Letitia Pearl Vega

Bachelor of Science

Computer Science

Daniel James Arnold (m)

Kevin Michael Broad

Catherine Bruney

Also Economics Major

Anita Lynn Dulude (c)

Garret J. English #

Also Mathematics Major

Trevor Vance Fuller #

Kathleen Northrop Goncalves (m)

Annette Grant *

Kuthair Habboush

Norca Hinostriza *

James E. Kish (m)

Tu Lam

Neville Colin Mair

Jamal A. Malik

Roy Mathew *

An Thi Nguyen

Adrienne L. Oshman

Also Mathematics Major

Karen L. Otto #

Henry L. Savo

Darshan Toolsidass * (m)

Mary Lou Weeks *

James Alfred White

August 1999

Candidates in Attendance

Joseph Anthony Bacoulis

William Diaz

Oleg Fingeret

Deborah Ann McKane

Bachelor of Arts

Criminal Justice

Catherine Alday *

Nicholas Paul DeCesare (m)

Ronald Favor Jr.

Raymond E. Gogarty Jr.

Christopher Lukowski

Antoinette Martone #

Mayra M. Rios

Emily Rubin # (s)

Susan E. Thomas

August 1999

Candidates in Attendance

Gail-Sue Capone

Taniesha S. Mitchiner

Bachelor of Science

Criminal Justice

Monique Belisle *

Brandon R. Bennett

Keith Gregory Broderick # (c)

Ken Davidson

Michelle Delgado #

Brian Doyle Dumont

Kaitlyn Moira Flavin

Michael A. Gazo

Christopher J. Geissler (c)

Sarah E. Hanna (m)

Patrick V. Higgins

Frederick M. Hobbs

Daniel Joseph LaMonica

Also Spanish Major

Keri Ann Loper

Anthony J. Maiscalco III (c)
Brian C McGrath
Michael Joseph O'Sullivan
Christy C. Palmer
Frank J. Parisi
Michael William Percival
Peter Reynolds Jr.
Michael John Rooney
Brian Anthony Staunton
Brad J. Stern
Jason Takacs
Mario Alberto Torres II *
James M. Viadero * (m)
Christine Vigliotti
Neil Joseph Welch

August 1999

Candidates in Attendance

Laura Fosco
Charles M. Hartman Jr.
Dennis Christopher Reid
Robert A. Ritz
Colin P. Ruane Sr.
Terrence James Washington
Seth Weiland

Bachelor of Arts

English

Evelyn Arizmendi
Gloria Bruno #
Suzanna L. D'Urso (m)
Yvonne Durrant-Baker (c)
Amy Madeline Finkle (m)
Jennifer Ann Hudson (m)
Maryanne Macari Jobson #
Jennifer J. LaBonte (s)
Nadine M. Mahony
Claire E. Miller
Parthena Savopoulos
Stephanie Smith *

August 1999

Candidates in Attendance

Michelle Chiarello

Bachelor of Science

English

Amy Beth Cameron # (c)
Jessica L. Gerkens
Kristen M. Jelormine *
Anthony Christopher Lapenta
Timothy J. Leonard *
Lee Elgin Mansy #
Colleen Mary McDermott
Michelle Elaine Pender
Timothy Wheeler

August 1999

Candidates in Attendance

Johane Metellus
Eric William Meyer
Christine E. Stockham

Bachelor of Arts

Global Studies

Rie Endo
Antonio Luiz G. Guimaraes (s)
Patrizia Massaro #
Linda Massaro #
Jessica Leigh Nieradka (c)
Christina P Sembos (m)

Bachelor of Arts

History

Tara Ann Auch
Jennifer Marie Bay
Elizabeth Ann Bitel
Denise Chantal Garlet #
Charles R. Miller #
Sarah Ann Molloy
Melissa Charlotte Mons
Jeremy Stevens

Bachelor of Science

History

Louis Monaco III

August 1999
Candidates in Attendance
Scott T. Jaracz
Erin D. McGerald
Brian Scott Rembisz

Bachelor of Science

Mathematics

Paula Cristina Freitas Batista (m)
Delorece Claudia Davis
Matthew F. Dudek
Brandon Lyons
Maria Rosaria Marranzino
Diana M. Saccente
Meghan M. Warnock

August 1999
Candidates in Attendance
Brian Paul Bognanno
Stephen Halligan
Jennifer Marie Kinik
Elizabeth A. Kremler
Philip Fred Tartaglia

Bachelor of Arts

Media Studies

Michael J. Babinski Jr.
Nicole Marie Bishop
Marianne Cardo (m)
J. Maxwell Cook (m)
James Gagliardi
Adam P. Lagnese
Lauren Elise McKinley #
Julie Ann Nevero
Also Spanish Major
Michael E. Powers
Carolyn A. Volpe (c)
Terri Summer Williams (c)
John Wool

August 1999
Candidates in Attendance
Gregory T. Nota

Bachelor of Science

Media Studies

Kerrie E. Darress
Bridget Flynn
Laurie Freddino # (m)
Scott Kyle Frissora
Elizabeth Jones Hyer
Christine D. McManus
Nicholas Anthony Pascucci, Jr.
Heather L. Pulsifer
Christopher Reinhart
Frank Todaro
Lisa Ann Wantroba
Jaime Willow Waring

Bachelor of Arts

Philosophy

Michael Patrick Cuddy

August 1999
Candidates in Attendance
Cyrus Matic Bartolome

Bachelor of Science

Philosophy

Suzanne Cahill-Manning #
Louis F. Howe Jr.
Thomas C. Jachimczyk *
James Edward Molgano * (s)

Bachelor of Arts

Political Science

Andrea Carlini
Michael M. Elgarico
Aurinda B. Esteves
Cindy Lisa (s)
Thomas E. Petrillo

Bachelor of Science

Political Science

Joseph A. Marrone III
Thomas Eugene McCabe
Holly L. Price *
Kelly Ann Reo
Elizabeth A. Sarlo
Keri Susan Skeen
Also History Major
Jason R. Stark

August 1999

Candidates in Attendance

Andrew Joseph Gambardella, III
Susanne Lee

Bachelor of Arts

Psychology

Jessica Accomando
Michelle L. Babuscio *
Jessica Leigh Bresnahan (c)
Maureen Lynn Briere (m)
Carrie Rea Demirgian (s)
Shaena Nadia Doherty # (m)
Gina Gomez
Karen J. Hurley
Erin Johnson
Jennifer Ann Kovatch
Patrick J. Lapicciarella #
Catherine R. Mackesy
Patricia A. Marella #
Tracey A. Merchant
John Morris
Cristina Papadopol
Caroline Redgate *
Marilena Rummo (c)
Clara Skolozdra
Maria Colimitra Tanase
Jason Velazquez *

August 1999

Candidates in Attendance

Luisa Afonso
Tara Lynn Bryden
Corie Elizabeth Caccese
Kevin Clifford
Jessica L. Perry
Dana Rey

Bachelor of Science

Psychology

Lynn M. Adams (m)
Christina Maria Afonso
Jessica Lynn Andrillo (m)
Stamatique Andriolas #
Margaret Marie Arena (m)
Martha Bakes
Tracy Lynne Balf
Jennifer M. Barnum
Christina Bertini
Danielle Calamita
Timothy William Chase
Tiffany Lyn Check #
Rachael Elizabeth Chenot
Michael J. Clark
Timothy A. Cooke
Sara Ann Coppola # (s)
Holly Lynn Dame #
Victoria Marie DaRe
Michelle Jean Day
Jessica L. Decilio
Derik DelCegno
Jennifer Lynn Della Ripa #
Jennifer DiCaprio
William J. DiStasi (m)
Bradford David Duhancik #
Jennifer Anne Dunphy
Brian Robert Falkowski
Kristen Aileen Ferguson
Jennifer Ann Fiorino *
Mary-Kate Fitzpatrick
Michelle Lyn Fobert
James Frimpter Jr. #
Suzanne M. Gabriele
Andrea L. Gardner
Frances M. Gargano (s)
Amanda Gaud
Laurie A. Gendron
Scott M. Glibowski
Megan Gula
Karen A. Hennig #
Margaret M. Hoffman
Melissa Lynn Hopkins (m)
Jennifer L. Huber
Jennifer L. Jacques
Kathleen Claire Jahn
John Christopher Jennings
Natalie Jenson (m)
Tracey Jones *
Kimberly J. Kelley
Kristen Lynn Kelley (c)

Colleen Anne Kennedy *
Jennifer Lee Klemets
Eric John LaBonte
Wayde Joseph Labossiere
Chantal Lambert (s)
Gena Marie Laplante
Kathleen Laskowski
Michael P. Lepage (c)
Amanda Ann Limbert

Jennifer Joan Mancuso (m)

Also Human Movement/Sports Science Major

Cynthia Marie Marshall
Katsuya Mochizuki
Dawn Margaret Morton *
Michele L. Murzak (m)
Heather M. Niquette *
Jocelynn T. O'Brien
Christopher A. Pawl
Hilary Burke Reichhelm
Owen D. Reilly
Jennifer J. Renko
Nayda M. Rodriguez
Erica Lynn Romano
Allison Nicole Russo
Matthew L. Sauer
Patricia Sellerberg
Noelle J. Sharp
Lisa Sleeper
Elaine Soto
Alverna A. Spence
Matthew John Studinski #
Beverly Tartaglia
Marc J. Tobin (s)
Yoshiyuki Tsubokawa *
Chi W. Urban
Deborah M. Vella
Kathryn E. Vigue
Kristin J. Visconti (c)
Jason M. Vogt
Dawn Marie Westlund
Sarah Ann Wiedeman
Lisa M. Yacoviello (m)
Heidi Sue Zommer

August 1999

Candidates in Attendance

Kai Blackwood
Sheila Bogan
Heather Mariah Correll
Jason Paul Havelka
Christina Marie Katsoulas

Mark Christopher Moura
Cara L. Munch
Claudia Ochsendorf
Christina Ochsendorf
Kimberly Anne Solley
Michelle Ann Witkowski

Bachelor of Arts

Social Work

Robin L. Kath *
Carolee R. Liberatore # (m)
Sarah Jane O'Rourke
Elizabeth M. Riley (c)
Becky A. Roy (m)
Alexa Soberal-Garcia
Rosa Vargas
Rebecca Justine Wilson

Bachelor of Science

Social Work

Cara L. Broussard #
Kristina L. Jones (s)
Aiko Orikasa
Daniel Scali
Lisa Thurston (s)

Bachelor of Arts

Sociology

Maureen Catherine Delaney #
Brian Andrew Jasgur
Layla Marie Showah
Elizabeth Ann Wilson (m)

Bachelor of Science

Sociology

Robert M. Fox Jr.

Bachelor of Arts

Spanish

Maria Esther Lopez
Danny Silva *

Bachelor of Science

Spanish

Karen Marie Bagley
Also Political Science Major

College of Business

Bachelor of Arts

Accounting

Danuta R. Dzierzbinski (m)
Peggy B. Zalkind (s)

Nicole J. Sanchez
Jeffrey David Smith *
Helen C. Tamourides *
Morris Oliver Thompson *
Meredith L. Watson #
Tai Wu # (m)
Bethany Anne Yanosy (c)

Bachelor of Science

Accounting

Achille V. Battaglia *
Charisse Betances *
Lenore L. Bjorlin
Orrett A. Bucknor
Mary E. Davis (m)
Michael DeClement
Maria Dos Anjos *
George Louis Ebner (m)
Robert Charles Foley (m)
Teral M. Gay
Kimberly A. Geraci *
Sandra Ann Gibbons
Catherine E. Katrenya *
Christopher A. Kelly *
Yuko Konishi
Thuan Le
Victor S. Makhraz (m)
Karen Antunes Martins
Deborah A. McGuigan # (m)
Diane O'Brien *
Lisa M. Pensiero
Gregory J. Pepin *
Holly Hyunsoo Ragoza (s)
Marc Allan Rich # (m)
John R. Russo

August 1999

Candidates in Attendance
Steven Mark Johnston
Joan C. Renkowsky
Adriana Rivera-Mazza

Bachelor of Arts

Business Administration

Jaime Calorossi *
Jill DiMaggio
Ellen Marie Jeanne Favreau
Floyd Gray III *
Stephanie Gyger
Laura Rose Hoffman
Fritz Jacques
Ricardo Leon #
Arnaldo Perez
Angela M. Perkins
Constance G. Pesavento # (m)
Michele R. Pirozzi
Marian Classen Rosseland (s)
Jeffrey James Schietzelt
Michael-Jon Sciamanna
Maureen S. Simmons #
Mae M. Tutunjian *
Brian D. Walker *

August 1999
Candidates in Attendance
James M. Francis

Bachelor of Science

Business Administration

Lisa Lee Acquafredda
James B. Andreyka
Tracy R. Augustine *
Randy Bell
Jennifer L. Bocchino (s)
Melanie M. Bodetti
Also Finance Major
Belinda F. Borea
Deirdre Lisa Botten
James B. Caldwell Jr. #
Meredith Bonin Carr *
Melanie Joy Carroll
Ersilia Maria Cataldo
Kelly A. Charkales *
Jennifer Rose Colman
John J. Connors #
Cristen Lee Cuomo # (m)
Marilia Curral *
Patricia C. Daly (s)
Marie-Alice P. Decossard *
Carmeline N. DeGennaro (m)
Michael G. Dobosz
Cheryl A. Doherty (m)
Catherine M. Ellis #
David Christopher Fesko
Russell Brooks Finlason, III
Melissa E. Ford
Leonard Norman Francoeur III #
Gianna Elisa Frezzo
David Alexander Garabedian
Michael Giuliani
Melinda Jennifer Good
Andrew Lawrence Gootman (m)
Georg Gunter Grassmuck #
Donna B. Greenfield
Steven Guerrero
Christine E. Gullesh (m)
Diane P. Hanna *
Jeffrey Robert Heinz *
Thomas F. Hickey #
Lena A. Higgott
Matthew J. Iaricci *
Richard Janocko (m)

Christina Jarvis (m)
Kimberly Karl
Also Finance Major
Jennifer A. Kasubinski (m)
Linda M. Kiyak *
Dave Kolesar *
Michael Lalanne
James J. Lampert
Heather Lamson #
Also Finance Major
Christopher J. Larkin *
William M. Larovera III
Renae A. Lavoie
James H. Lensing (m)
George P. Ligouri #
Edna Ruth S. Loaiza *
Kristine Lohrman # (m)
Alan Longueil # (m)
William T. Loughlin Jr. * (m)
Dia L. Lozinak * (s)
Marva Lupe * (m)
Jimmy Magloire
Vincent Michael Marano
Ryan N. Marion
Sharon Nadia Maxwell *
Gregory Bryant McAleer (c)
Margarita Mercado
John Merturi
Kevin Mickune
Martha A. Miller #
Nancy C. Minogue (m)
Michael Joseph Minotti (m)
Eric Michael Mola
Maria-Paula Morales # (m)
Jennifer L. Mrozik #
Heather Marie Norton
Kimberly A. O'Connor
Stephanie Charlene Paris #
Kimberly S. Pellini
David A. Persico (s)
Nicole M. Phenix * (m)
Marie E. Phillips # (m)
Kathryn Pickering (m)
Mary Georgette Priest
Sandra Purcell
John Patrick Randazzo
Cynthia Deneice Rankins
James Regis
Carol A. Rittereiser-Coritt
Anissa Martine Rizzi *
Anthony Michael Rocco Jr.
Gale S. Rodia * (m)

Marion A. Rodriguez (c)
 Jean Rotini (m)
 Michael Joseph Russo *
Also Finance Major
 Don A. Saladino
 Robert James Sanford, Jr.
 Maureen Sara #
 Anthony G. Sepe
 Luke Gianni Sessa * (m)
 Lawrence G. Shamaly (s)
 Jennifer May Smith
 Donna Ellen Solotruk *
 Lynnae Ann Spencer
 Elicia A. Sullivan # (c)
 Brian J. Taylor *
 Garfield Anthony Thomas
 Vivian M. Thomas
 Claudette Hope Alliette Thompson *
 Andrew Charles Tienken * (c)
 Alisa Kimberly Torres
 Konstantinos Tsirakidis *
 Jamie Vaccarino
 Linda S. Verret (m)
 Christina Vilay
 Jill Elizabeth Visinski #
 David Vitti
 Arif G. Vohra #
 Dana Marie Westing
 Diane E. Whitbread # (m)
 Warren White #
 Carly Rose Wiesniak *
 Janine Olivia Williams #
Also Finance Major
 Brian K. Wolchok
 Dennis Robert Wuestkamp
 Kevin D. Yee #

August 1999
Candidates in Attendance
 Lisa Francine Brevard
 Jonathan Broad
 Anthony R. Cabana
 Tanya Cruz
 Christopher F. Cuciti
 Albert C. Domizio
 Ralph M. Fatigate, III
 Ruth Foster
 Anthony Giansanti
 John Johnson
 Danna M. Kennedy
 Brian D. McGowan
 John Merturi
 Rachel L. Merva
 Kerryann O'Callaghan
 Sonja Radman
 Kathleen E. Rainey
 Brian Harry Richardson
 Evette M. Rodrigues
 Pietro Savo
 Michael R. Vaughan
 Kelly Marie Volduro
 Richard B. Wolf
Also Finance Major
 Michael Yermenson

Bachelor of Arts

Economics

Christopher K. Herr *

Bachelor of Science

Economics

Joseph N. DiVito

Bachelor of Arts

Finance

Linh M. Le
Also Business Major

Bachelor of Science

Finance

Elina Garcia Alves
Also Business Major
Kathleen C. Bailo * (s)
Nancy Kiernan Bard #
 Roberta G. Boyle
 Christine Carzima
 Lovely Choudhury
 Also Business Major
Shawna N. Clyburn *
 Michael R. Deangelis
Robert A. DelMonaco #
 Also Business Major
 Matthew T. Digangi
Christine Lynn Duggan
 Chad J. Harris #
 Also Business Major
Christopher Thomas Julianio #
 Inna Kogan #
 Sandra E. Lawrence *
 Also Business Major
E. Bonnie Lindsay # (m)
Pamela Louise LoPiccolo *
 Ellen B. McQuade-Smith
 James Milne
Christopher Michael Oko
Myra Elizabeth Pierce (m)
 Also Business Major
 Kristopher J. Pinola
 Also Business Major
Joseph Ragonese (c)
 Danny Rainho #
 Also Business Major
 Darryl Razzaia #
 Norman C. Riley *
Nathan Thomas Risley
 Also Business Major
 Ketly Saint-Louis #
 Kathleen M. Savino
Christopher C. Solodyna
 Also Business Major(c)
 Sandra Dee Spence
 Gina A. Squara #
Lucia Valente Thorme
Brian Patrick Tobin #
 Irina Zuboreva

August 1999

Candidates in Attendance

Kathryn Eddinger Bomann
Robert William Kipp III
 Also Business Major
Marcy Elizabeth McCormick
 Carey Wunsch

Bachelor of Arts

International Business

Pierre F. d'Haiti #
Tammy Lynn Davidson
 Lisa Marie DeBurgo
 Michael Brian Dutton
 Also Spanish Major
 Dawn Gresik
Frank Isadore Larsen
Kathryn Suzanne Lukach #
 Magdalena J. Mars *
 Renata Milewski
 Noreen A. O'Brien
 Gloria Perez
 Robert J. J. Pinkas #
 Thomas A. Ranalli III
 Patricia Elaine Rice
Isabel Sofia Teixeira #

August 1999

Candidates in Attendance

Janette Gonzales
Katherine Linnet

College of Education and Health Professions

Bachelor of Science

Human Movement/ Sports Science

Matthew Shawn Gregory
Jennifer M. Hofmann
Jillian Lee Lefort
Kenneth J. Martin
Michelle Kathleen Papagni
Donna Christine Steele
Dina Marie Whalen

August 1999
Candidates in Attendance
Kevin P. Collins

Bachelor of Science

Nursing

Maria Sandra Adamo
Sara Elizabeth Alia
Melissa L. Allen
Linda Anderson *
Patricia Jean Armusewicz
Marianne Ballard #
Elizabeth Carrena #
Cristina M. Dos Santos
Amy Jill Gilbert #
Agnes Elizabeth Gussen
Kristen Jean Hennessey
Cynthia Louise Iannuzzi (m)
Kathryn M. Imperato #
Wendy Inglese #
Ari Karakatsanis
Jennifer Kennedy
Kendra L. Laptik
Dawn Marie Licari
Diana Lopez
Ingrid Benoit Louis
Moir McNeill
James Thomas McCarrick
Virginia A. McLevy # (s)
Moir McNeill
Carrie Ann Nielsen
Marie A.E. Oge
Rebecca Louise Orem (c)
Margaret J. Parniawski # (m)
Christine Portela #
Heather Noel Ray
Helen Rose Repasi
Edin Alex Salazar
Dominick Scalera
Janice Ann Sienkiewicz
Nicole Spinelli
Doreen Denise Walsh
Eneida Wolfe
Susan L. Zemper

August 1999
Candidates in Attendance
Renee Reid

University College

Bachelor of Arts

General Studies

Norma Rosalie Glover
Ryan Robert Kelleher
Lisa Ann Pompilio
Dana Claire Scinto #

August 1999

Candidates in Attendance
Catherine M. Meister

Bachelor of Science

General Studies

Andre P. Buchsbaum #
Susan Leone Buczek
Julien Ebbri #
Kathleen M. Eigenrauch
Kimberly T. Ferris
Ramona Gonzalez
Sabine Jean-Paul #
Melissa Ann Kiely
Maureen Elizabeth Mengold *

August 1999

Candidates in Attendance
Elias A. Montimurro
Joseph P. Moura

College of Arts and Sciences

Associate in Science

Computer Science

Denise Carol Arpino
John Porter
David M. Sadowski

August 1999

Candidates in Attendance
Akiko Suemoto

College of Business

Associate in Science

Paralegal Studies

Tanya Cruz
Sandra M. Laliots
Patricia Lebel-Lasse (c)
Deborrah Massiah *
Martha A. Miller #
Nancy C. Minogue (m)
Alyssa Reppenhagen
Elizabeth Rose Sandberg (m)
Maureen S. Simmons #
Victoria M. Spada
Kelly Marie Volduro *

August 1999

Candidates in Attendance
Mary E. Infante
Xenia Y. Turcios

College of Education and Health Professions

Associate in Science

Respiratory Care

Edwin Ernest Brown

Robert A. Gondor

University College

Associate in Arts

General Studies

Richard P. Abate Jr. # (s)
Matthew Joseph Alexander-DiSette
William W. Allyn III # (m)
Tania R. Arduini
Kevin J. Barry #
Natasha Basdeo *
Robyn Bowers *
Denise Joyce Buonocore
Mary Ann Carroll #
Winston Collins # (m)
Darleen S. Conklin (s)
Lynne Marie DeAngelis
Frank Delibero
Diane DeLuca *
Michele L. DePina
Jewel Leann Detmer
Paul Dudeck #
Helen Eneh #
Gina M. Fabrizio
Mary Katherine Fedor # (s)
John Michael Fiedler #
Julie Marie Flannery # (m)
Gayle Forgette *
Amy L. Fox #
Luisa Gallucci *
Karen Geffert * (c)
David L. Georgette # (s)
Marybeth Y. Geronimo (c)
Josephine S. Googin # (m)
Diahann C. Gray
Victoria J. Gruber (m)
Michelle E. Halpin
Marie C. Herrera (c)

K.D. Indra Jayatilake #
John C. Jennings *
Lori A. Lampman # (s)
Susan A. Lynch #
Suzanne C. Malerba #
Jocelyn N. McFarland # (s)
Heather Rene McKoy #
Dani McLeod #
Jennie G. Melendez #
Amy Lynn Mitsos
Sally A. Norman *
Adele Elizabeth O'Brien (m)
Alvin W. Penn
Deborah Ann Petro *
Marie E. Phillips * (m)
Joan Richards
Andrew William Richardson #
Donna Marie Ricks * (s)
William A. Tigano #
Susan M. Tocco * (s)
Nanette Torres #
Kimberly A. Tucci
Karen Vvra (c)
Mary Lou Wagner #
Stan Wolpiuk Jr. * (m)

August 1999

Candidates in Attendance

Cheriel A. Gordon
Shirley Marie Mosby
Kaori Noguchi
Wanda R. Simmons

The preceding does not constitute an official graduation list.

The students listed here were candidates for the degree or honor indicated at the program printing deadline.

