

SPECTRUM

Volume 8, Number 2

Fairfield, Connecticut

September 19, 1991

Senator Christopher Dodd pays visit to SHU

By Paul Perillie
and Michael Champagne

Monday, Sept. 16, 1991. Just the beginning of another week full of work. So what's the big deal? The big deal is that SHU hosted a hearing led by U.S. Senator Christopher Dodd. The Democratic candidate for the mayor of Bridgeport, Joe Ganim, also stopped by to press the flesh.

Senator Dodd appeared in the Hawley Lounge to chair a field hearing on the effects of the recession on families and businesses in the state of Connecticut. The event, sparsely attended by members of the SHU community, still drew local press and testimonies from people invited by Dodd's staff.

Dodd sat alone at a podium with a chart showing manufacturing employment figures for the state of Connecticut. The chart

showed a serious decline in the manufacturing sector since 1985 from a high of 420,000 (approx.) to an all-time low today of 320,000.

With somber voice, he spoke candidly and did not try to paint a bright picture for the future.

"There are serious domestic problems that need to be addressed... to restore soundness and vitality to our economy," Dodd said.

After his opening statement, testimonies were heard from the first of two assembled panels. From economists to labor leaders, the majority spoke of the same bleak picture which Dodd had presented.

Professor of Economics at Fairfield University, Edward Deak, testified that the two major problem areas were the defense industry cuts and the state's shrinking manufacturing base.

See Dodd, pg. 3



U.S. Senator Christopher Dodd (left) meets with Democratic candidate for Mayor of Bridgeport, Joe Ganim (center) on Monday in the Hawley Lounge during Dodd's panel hearing on the state of the economy of Connecticut. Michael Petraglia (right), Ganim's campaign manager, was also present for the meeting.

Photo by Michael Champagne

Sacred Heart University's enrollment rises by 40%

By Frank Mastroianni
News Writer

According to the latest figures released by the Admissions Department, Sacred Heart University has experienced a 40% increase in incoming students this fall.

Bill Jenkins, SHU's director of admissions, calls the increase, "a very positive statistic for the Sacred Heart community."

According to SHU's Vice President of enrollment planning

and student affairs, James Barquinero, "the increase can be attributed to the university's change in philosophies." He explained that, "when I arrived here in the fall of 89, the school was interested in generating quantity. The philosophy was to get as many students as possible. By the spring of 1990, this philosophy was revamped."

Barquinero explained that, "the school needed to survive as an institution. Simply maintaining

quality control was not the answer." He continued by saying that, "Sacred Heart needed to shed the image it had acquired of being a glorified community college."

According to Barquinero, "Sacred Heart students were suffering from a low image problem. The school needed to enhance its image. For this reason the 'automatic admit' policy was thrown out." He added that, "while the school would begin implementing new programs, the future students

of SHU would know require proper preparation for the honor of admission."

"The school had gone from denying zero applicants admission in 89, to 45 students in 1990 and 104 in 1991," said Barquinero.

Barquinero sites many reasons for the increase, including: the football team, the Basic Studies program and the Honors Program as well as the addition of dormitories.

"We can now compete with

the whole country as a premier place with quality things," said Barquinero. He added that, "although figures are still being computed, I am unaware of any college in the Northeast that can boast of such an increase."

According to figures provided by the Admissions Department, on opening day, there were 486 freshmen just out of high school. This figure was up from 348 last

See Enrollment, pg. 2

Digital Equipment Corp. ushers SHU into 21st century

By Charo Clark
News Writer

Last April, Digital Equipment Corporation awarded Sacred Heart University a grant worth \$450,000 to help bring the university into the 21st century with the installation of a major computer network.

Today, under the guidance of Vincent Mangiacapra, director of academic and management computer systems, and the financial support of Digital Equipment Corporation, SHU is on its way to providing state-of-the-art computer technology for the use of students, faculty, and administration.

"Computer Networking is a means of connecting a number of computers and users across distances." A computer in one area of the campus will be able to access information in another area. "The network is the highway

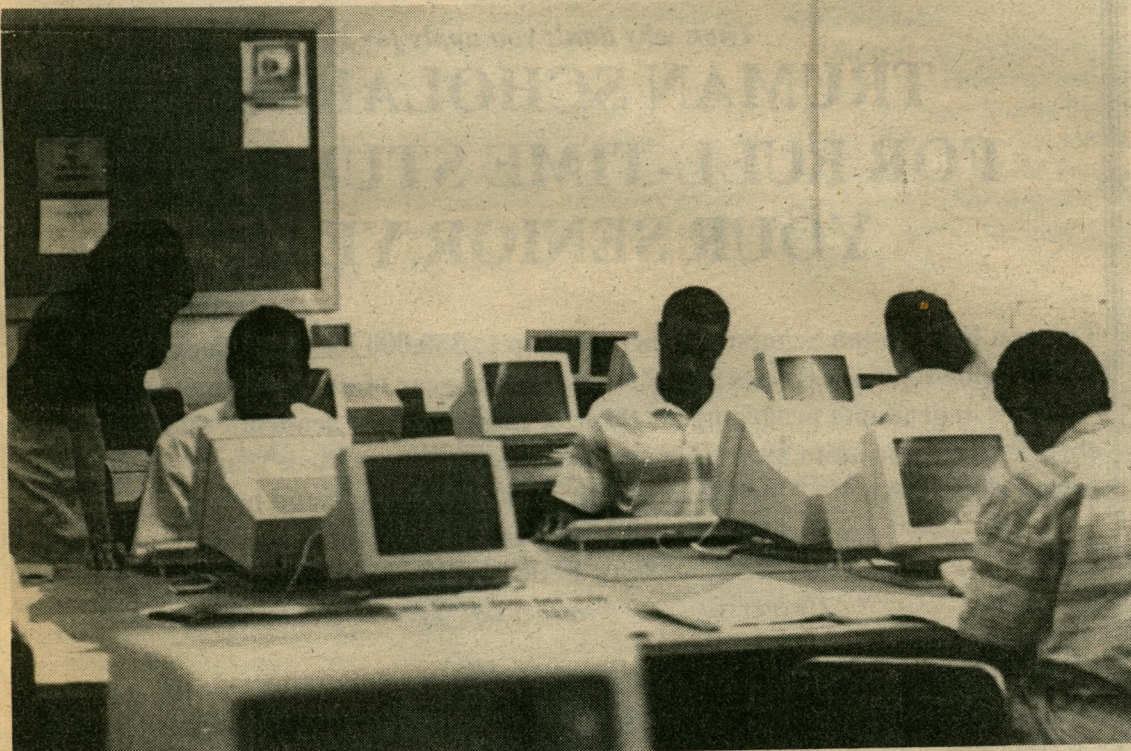
that will carry all the data to its destination," Mangiacapra explained.

Vincent Mangiacapra designed the project with Digital, "I designed it along with Digital, to not only meet our needs of today, but our needs for the many years to come. So this network will be easily upgradable to what may be state-of-the-art in ten years. We will be prepared for that."

Since the project was first implemented progress has been made. All the fiber optic cable has been laid. It is installed throughout and between campus buildings. Also, all the "station cabling" has been installed, providing outlets throughout the university for the future hook-up of computer hardware.

The previous VAX 750 system was removed in May, and one of the new Digital systems is in-

See Network, pg 2



Students in the newly equipped VAX Lab are working on equipment and services provided by a grant from Digital Equipment Corporation. Director of Academic and Management Computer Systems on campus, Vincent Mangiacapra worked with Digital to design the project. Photo by Diantha Skeeter

Pioneering efforts at SHU

This weekend marks a number of firsts for SHU. Dubbed the First Annual Pioneer Weekend, events have been planned to liven up even the most staid people.

Lively up yourself!

On Friday, Sept. 20, a Reggae-fest with the band "Anthem" will be held in the quad. From 8:00 p.m. - midnight the band will offer some "cool running" and Rally-rags will be passed out to the first 250 people. Rags can be used for mopping one's brow at the fest, or to hurl about at the first SHU home football game on Sat. Sept. 21. What a segue!

Sacred Heart University hosts its first home football game on Sat. Sept. 21. SHU vs. Iona will be held at 1:00 p.m. at the Pioneer Field near the Campus Center. Come and support the team (and bring your Rally-rags so we can "mop up" Iona College).

Later, that same day

A Pioneer Kickoff will be held in the gym on Sat. Sept. 21 from 9:00 p.m. - 1:00 a.m. Music will be provided by Electralyte. Alcohol will be served to those people 21 or over. Food and soda will be available to all. \$2.00 Admission.

Party time for seniors

SHU's first "Senior Social," sponsored by the Alumni Executive Committee is scheduled for Thurs., Sept. 26, in the Hawley Lounge from 7:00 p.m. - 9:00 p.m. All part-time and full-time senior class members are invited to the festivities. Free food, soda, beer and wine (I.D. required) will be served. Class officers will be on hand to discuss plans for upcoming events. Pub night will follow in Chubby's Lounge.

Meet the President

Students will have a couple of opportunities to meet President Anthony Cernera in the next week. An opportunity for questions and answers with Cernera and Dr. Trebon on their presentations given at the Faculty Institute, this "Dean's Hour" meeting will be on Tues., Sept. 24 from 11:00 a.m. - 12:00 p.m. in the Community Room in the Campus Center. Contact Dr. Kristen Wenzel at 371-7778.

A Presidents Rap session will be held Thurs., Sept. 26 in the Music Room A (next to Security Office). Here's your chance to ask President Cernera whatever is on your mind, from classes offered to campus expansion plans to activities to the state of the world to your career to the next World Series winner to ...

Continuing Ed. is giving money away

An awards ceremony for Continuing Education students is scheduled for Wed., Sept. 25 at 7:30 p.m. At the ceremony, scholarships are to be awarded to students who have maintained at least a 3.4 academic average with a minimum of 30 semester hours logged at SHU. The 11 - 12 recipients will each receive \$660.00 scholarships.

Career Services Center helps your search

The Career Services Center, responsible for providing guidance to students in choosing a career, offers individual and group counseling, job placement, on campus recruitment and workshops.

The center is temporarily housed on the upper level of the library and will soon be moving to where the registrar is presently located.

Career Service Center office hours are Monday - Friday from 8:30 a.m. - 4:30 p.m.

Play "Misty" for me

If you sing or play an instrument, the music department is looking for you. This semester a Pep Band as well as a mixed chorus will be starting on campus.

The Pep Band will play at football and basketball games, providing audience involvement and a musical back-up for the cheerleaders. Future members must have some experience in playing either a wind instrument or drums. Band members will be playing pop and march arrangements.

The music department, responding to student inquiries, will be starting a Mixed Chorus this semester, which will be performing on and off campus. The chorus is open to anyone who can sing, and rehearsals will be Wednesdays from 7:30 p.m. - 9:45 p.m.

For more information on either activity, contact Leland Roberts in the music department at 371-7735.

Stargazin'

A public lecture hosted by the Faculty of Science, Math & Computer Science is offered for all on Thurs., Sept. 19 at 4:30 in the Schine Auditorium.

Dr. Michael Zeilik from the Institute for Astrophysics at the University of New Mexico, will deliver the lecture. His research activities focus on four areas: magnetic activity cycles of sun-like stars, starbirth, astronomy in the historic and prehistoric Pueblo world and the physical properties of the planet Mercury.

Network to link university buildings

Con't from pg. 1

stalled, and was used during the summer semester.

In as soon as two weeks Mr. Mangiacapra will be conducting a final walk-through with representatives from Digital to ensure that the project was completed to specifications. Also in the next two weeks, he will be testing the network with Paul Sebben, manager of academic systems.

Since the computers will be connected together via network throughout the university, there is the possibility of wrongful access to important information. Therefore, security will also be incorporated into the new system. "Currently," Mangiacapra explained, "the administrative system is a separate system. Students and faculty really don't have access to it. Once it does get onto the system, there is what is called a C2 level of security. It is the type of security they use for the govern-

ment data bases. It is extremely difficult to get into. Or we have another option of keeping that machine on a whole separate (what they call) "backbone of the network, so it doesn't even know the other users are there."

With the installation 90 percent in place, work continues this semester. In addition to the changes taking place within the computer lab and the activation of a computer networking system, two rooms will be converted into computer centers. South 202B, which will act as a basic studies classroom, as well as the MBA classroom in the north wing will be computerized.

There will also be the installation of two electronic mail systems. One for faculty and staff, and the other one for students. "I think that will be a great asset to saving some trees, less paper floating around, (and) people getting correspondence much quicker. Eventually we will work toward an integrated system for faculty

and students so that they would be able to communicate electronically." Mangiacapra said.

The implications for future programs and a higher, more efficient level of operation are endless. "They could expand on it (computer science program). They could expand into new courses. Right now we are offering an X/Windows course (CS324) which is new. It's exciting, its being offered for the first time this fall. I think we will be able to start offering more networking courses for the computer science program. I think we will have a facility that will be able to handle the requirements of a master's program in computer science. I think there are a lot of possibilities. Whatever direction the faculty would like to take computing on campus we would be able to accommodate their needs, and any other discipline outside of computer science - start getting more computerized instruction possibly into the classroom," Mangiacapra said.

Enrollment figures up at Sacred Heart for second consecutive year

Con't from pg. 1

year and 275 the year before. When transfer students are added in, the figure of 486 is expected to rise well over 600 students.

The Admissions Department also reports that over 18,000 high school students have already expressed interest in Sacred Heart for the 1992 school year. It is

expected that this figure will rise to 25,000 by January. Barquinero explained the significance of this number. "By January there will be 25,000 students interested in attending SHU. Of course not all 25,000 will apply, but that many did take the time to alert us of their interests."

"SHU has entered an 'era of respect'," said Barquinero. He

adds that, "SHU's future looks very bright, where doing what's being looked at on the outside by students. We already have inquiries by students from every high school in Connecticut. Our goal is to get an application from every high school, and we are on target."

SHU is becoming a major player in higher education in the Northeast," he concluded.

ATTENTION SACRED HEART UNIVERSITY JUNIORS

Are you a full-time student during this 1991-92 academic year?
Are you committed to a career in government or the public sector?
Do you have leadership potential?
Do you rank in the upper third of your class?
Do you have a track record of public or community service?
Do you expect to receive your Baccalaureate degree from Sacred Heart between December 1992 and August 1993?

YES?

Then why don't you apply for a

TRUMAN SCHOLARSHIP FOR FULL-TIME STUDY FOR YOUR SENIOR YEAR

Truman Foundation Scholarship provides up to \$30,000 for educational expenses. Each junior scholar receives \$3000 for the senior year of undergraduate education. Scholars in graduate programs for three or more years of academic study are eligible to receive up to \$9000 per year for a maximum of three years. The award covers eligible expenses including tuition, fees, books, room and board.

COME TO ROOM 23 OF THE CAMPUS CENTER
(POLITICAL SCIENCE) FOR MORE INFORMATION

University Coordinator: Dr. Gary L. Rose

TELL A FACULTY MEMBER YOU ARE INTERESTED IN BEING
NOMINATED BY THE UNIVERSITY FOR A TRUMAN SCHOLARSHIP.

DEADLINE FOR RECEIVING NAMES OF
INTERESTED STUDENTS IS NOVEMBER 1, 1991

Cafeteria controversy simmers and stews at SHU

By: Dean Connors
News Editor

Among the many changes at Sacred Heart this year is one with the cafeteria staff.

Seiler's Food Service, the same service employed at Fairfield University, began serving meals to the SHU football team during their pre-season camp.

When asked what he thought of the new food service, Head Football Coach, Gary Reho, had this to say, "Excellent! No complaints whatsoever. I think its an obvious improvement [over last year's cafeteria food service]."

However, the previous caterers, Joseph's Food Service was not as enthusiastic as Reho.

"The way they [replaced us] was unbelievable," said ex-SHU cafe employee Alex Mizzona. "I still can't get over what they did to us."

According to Mizzona, they were given only two days notice and cut short two years on their five year contract. "The only thing the university paid for was our equipment and the food that we had to leave behind," he complained.

Mizzona also claimed that Seiler's received the job because they have \$250,000 to invest towards the kitchen renovation.

"They (Sacred Heart) just wanted to grow so they threw us out," said Mizzona.

Mizzona thinks this was a poor investment because the volume of students has not increased as much to call for this expenditure.

The kitchen is currently undergoing renovations and will be closed for the next four to five weeks.

Anna Shippole, district opening manager, explained that these renovations are to accommodate a Food Court "scatter system."

Several stations will be set up to allow for a mix of self service.

After construction is complete, students will enter the food court and have a wide array of foods, beverages and deserts to chose from.

Roger Mayer the chef/manager graduated from The Culinary Institute of America in New York and has ten years of experience in the service business.

He said that a menu will be posted before each week displaying the starch, poultry/meat item, and vegetable to be featured in the entire section of the Food Court.

Seiler's will not only provide dining service, but will cater as well.

"If any students or fraternity/sororities need a catered event, they can call us," said Mayer.

Until this project is complete, they are serving food in two very unique ways for Board Plan Students and all students, faculty and staff.

For those on the Board Plan, meals is served in the Food Court set up in the main dining room. You must have a valid student I.D. with a meal plan sticker, and enter through the double doors nearest the Student Activities Office.

When you enter the food

court area you must show your I.D. to the cashier. You then may pass through one at a time and exit into the dinning area.

Your choice of beverages, hot entrees, soup, salad bar, cereal bar, and deserts are all included with the Food Court.

Services of the Food Court are also available to non-board plan students, Faculty, Administration and Staff at a cost of \$3.00 for breakfast, \$4.00 for lunch, and \$5.00 for brunch/dinner.

Under the tent outside the cafe Seiler's offers all those not on the Board Plan continuous dining service. There is coffee, beverages, muffins, pastries, salads, sandwiches and snack items available on a cash basis only.

Because there are many athletes at SHU, whos practice time runs over the posted diner hours, some had negative comments and are opposed to the schedule.

"The food is really good but the time just doesn't fit our schedule," said Bill Girolomoni, a freshman football player. "We dont get there on time after practice, so I usually don't eat there."

Another football player who usually misses dinners because of practice is freshman Russ Greenberg.

"They kept the kitchen open for us so they were real helpful but they didn't have much left," said Greenberg. "They made the football team sandwiches with only two days notice when we had to go away."

"What a lot of people do not understand is that the service is in the process of getting things up to

par," said Tyrone Barnett, Graduate Assistant Football Coach. "It will be a better facility as soon as things get settled."

Hours of operation for the Food Court are as follows: Mon.- Fri. breakfast 7a.m. -8:30 a.m., lunch 11:30 a.m.- 1:00 p.m., and

dinner 5:00 p.m. - 6:30 p.m. On the weekends, brunch will be served 11:30 a.m.- 1:00 p.m. and dinner 5:00 p.m.- 6:00p.m.

Under the tent Seiler's hours will run from 8:00 a.m.- 9:30 p.m. Mon.- Fri. and 8:00 a.m.- 3:00 p.m. Sat. and Sun.

Dodd, panel meet at SHU

Con't from pg. 1

He was followed by Joseph McGee, Commissioner of Economic Development, who gave a hard but not hopeless assessment of the Connecticut economy. "To precipitate a recovery," McGee said, "unemployment benefits need to be extended, the fed needs to lower its interest rates even more, and major banking reforms are urgently in order."

It was McGee's first point, that of extending unemployment benefits that Dodd kept driving home to his assembled constituency. Dodd said, "I cannot understand President Bush's vetoing of the very bill that would accomplish this task". He further explained, "how difficult it is to override the Presidential Veto."

The second assembled panel - that of local individuals adversely affected by the economy - were given the floor, in a chance for their concerns and problems to be heard. Although the people on this panel were invited by Dodd's staff, "they were not there to inflate his ego," said Dr. Gary Rose, professor of political science at SHU.

"Some of the questions they raised were pretty objective and pretty fair. [Dodd] was very open-minded about who (he had on the panel,)" Rose continued.

How this hearing related to the student body at SHU is a very simple equation: The unemployment rate in Connecticut is burgeoning and the prevalent theory among Connecticut economists is that recovery is not right around the corner. Fur-

thermore, when a recovery does come to pass, it will not be that strong.

That means that in early May, when several hundred SHU students graduate, they will be entering a workforce already saturated.

"A depressed economy," said Rose "obviously is going to have very serious consequences...as far as job opportunities are concerned."

The students should have been there to hear this. It's important for them...to have some basic facts about the state of manufacturing, but also it would be an excellent opportunity (for students) to voice some concerns about entering the job market," he continued.

The sparse turnout by the SHU community could be attributed to a lack of notification about the event. Indeed, Dr. Rose himself knew about it only because he happened to contact *The Spectrum* on an unrelated matter within minutes of our learning of it.

Director of Public Relations, Virginia "Ginny" Apple, indicated that Dodd's people had contacted her office early last week but assured her that they would take care of the press releases for the event. Even with those assurances, SHU's Public Relations Department issued a release which did not arrive at some departments and offices until after the hearing had ended.

Said Rose of the turnout, "I think it was unfortunate. How often do we get a U.S. Senator here to field questions?"

WORKSHOP SKILLS CENTER

Classes Offered for September

Developing Effective Study Skills

Monday,	Sept 23	12:00 p.m.	Ms. Greene
Tuesday,	Sept 24	4:00 p.m.	Ms. Turner

Developing Effective Note-Taking Skills

Thursday,	Sept 19	11:00 a.m.	Ms. Ferizovic S204
Thursday,	Sept 26	6:00 p.m.	Ms. Santossio

Improve Your Memory Skills

Wednesday,	Sept 25	12:00 p.m.	Ms. Spector
Thursday,	Sept 26	4:00 p.m.	Ms. Fontana

Writing Effective Sentences (International Studies)

Thursday,	Sept 26	11:00 a.m.	Ms. Caggiano	S204
-----------	---------	------------	--------------	------

Writing Effective Summary Skills

Wednesday,	Sept 25	10:00 a.m.	Ms. Skarzynski
Monday,	Sept 30	1:00 p.m.	Ms. Master

Developing Positive Self-Image

Tuesday,	Sept 24	11:00 a.m.	Ms. Singer	S205
Thursday,	Sept 26	11:00 a.m.	Ms. Batterton	S205

APA Research Methods for Nursing

Thursday,	Sept 19	4:00 p.m.	Ms. Skarzynski	S113
-----------	---------	-----------	----------------	------

Writing Workshops for Social Work

To Be Announced	Ms. Greene
-----------------	------------

if you want to get in,
you've got to
STAND
out.

GMAT

GMAT

GRE

GRE

LSAT

LSAT

Preparation Courses
FREE Diagnostic Test and Consultation
Present this ad and receive
\$50.00 off any course

Westport
227-1440

THE RONKIN
EDUCATIONAL GROUP

Stamford
348-2882

SACRED HEART UNIVERSITY SPECTRUM

Volume 8, Number 2 September 19, 1991

LIBRARY USER FEE USE IT!

Although it may sound as if the students of this university are being taxed to have access to the library, the newly instituted library-user fee does have "a direct and immediate benefit to all students." So stated University Librarian, Dorothy Kijanka.

The fee, which is \$10.00 per student per semester, immediately allows the library to allocate funds to upgrade the CD-ROM system (an on-line index), and to purchase current books and periodicals for all departments. "All the money is for research material," Kijanka said, "none of it will go toward the construction of a larger building.

It is important to note that the library does not receive federal funds. Until the institution of the Library User fee, the library had to rely on grants to finance the purchase of materials. This is the one reason for much of the antiquated resources now on the shelves.

With the new found wealth of financial revenue, the library plans to add a Nursing Index, as well as WESLAW to the CD-ROM System, "thus freeing both the student and library staff from the cumbersome task of locating material, and assisting with inter-library loans, if necessary," stated Kijanka.

As one who was determined to find a ruse and prove that the Library User Fee was just another in a long line of ploys of the administration to squeeze money out of the students, I was not convinced that the funds would be used to purchase new materials because, as Kijanka claimed "Books and periodicals have an inflation rate of at least 20% per year." However, once I saw, first hand, the new materials and the CD-ROM in action I was quickly converted.

Most likely, this is the only opportunity Sacred Heart University students have to see their money at work. I urge all students to walk down to the library and "check out" all the new, improved and exciting things happening.

A note to the Administration.... Can the name of this fee be changed to "Library Improvement Fund?" This will help greatly with administration/student relations.

Check out the library, it's becoming the one of the most exciting places on campus!

EDITORIAL POLICY: The opinions expressed on the editorial page(s), whether in signed columns or letters to the editor, are solely those of the authors. Unsigned editorials appearing in the far left column of the first editorial page represent the majority opinion of the *Spectrum* Editorial Board. Guest columns and letters to the editor are welcomed and encouraged. All are subject to editing for spelling, punctuation, grammar and clarity. Letters to the editor should not exceed 350 words and will be considered on a space basis. All submissions are reviewed by the Editorial Board and final decisions are made by the Editor-in-Chief.

The *Spectrum* is a student-run newspaper of Sacred Heart University. It is published every Thursday during the academic year. The *Spectrum* office is located in the Academic Building, room S219. The phone number is (203) 371-7963. All mail to the *Spectrum* should be sent to Sacred Heart University c/o The *Spectrum*, 5151 Park Ave., Fairfield, CT 06432-1023. The *Spectrum* believes all advertising to be correct but cannot guarantee its accuracy. The deadline is nine (9) days prior to publication. For information call (203) 371-7966.



PONTIFICATIONS POURQUOI LUXEMBOURG?

By Phil Trahan
Associate Editor

Close your eyes and imagine moated castles overlooking small villages. Imagine Belgian Waffles, French wine, and Oktoberfest in Germany. Now, imagine being able to attend classes, and earning a degree in a country smaller than Rhode Island; in a country with a history of over nine hundred years.

Imagine that in your free time being able to have all three of the above mentioned items. And imagine also, that at graduation the words "UNIVERSITA SACRI CORDIS" will be printed on the diploma. Well, it's no longer a dream. You no longer need to join the Army to see the world.

Yes, it's true. SHU now has a satellite campus located, and operating, in the Grand Duchy of Luxembourg. For the few who do not know where the Grand Duchy of Luxembourg is located, it is a postage stamp sized country, of 999 square miles, wedged precariously between Belgium, France and Germany.

Now, before you go packing your bags you must be forewarned. This campus offers only an MBA program, has only three courses to select from, and at this time has a total of enrollment of sixty students.

The argument has been advanced that this program, or rather its inauguration, will not affect the Park Avenue campus. REALLY?!

In the opinion of this editor, the capital used to open this program, to keep this program running and staffed, although beneficial to the economy of the Grand Duchy, would be far more rewarding to SHU if it were used to improve the quality of education, and courses offered in Fairfield.

How can the omnipotent administration expect SHU to become a campus with an international flavor when there is such a tragic lack of traditional history courses being offered in Fairfield? What kind of representative of SHU would be a student that takes a course on "The History of Sports In America?" Where are the courses in Modern European or Russian history being offered? And finally, where are the pri-

ties of the administration? Clearly in the back pocket only.

You might ask how the money being wasted at the Grand Duchy of Luxembourg benefit the Fairfield campus? A third Political Science instructor could be hired, or a Russian language instructor. It is truly an inadequate university which does not offer Russian amongst its foreign language curricula, or is so strapped for courses that "The History of Sports In America" must be offered in place of European history.

One can only wonder how many other departments are as understaffed, or neglected by the administration, as the two mentioned above.

It is difficult, if not impossible, to comprehend the rationale behind starting a satellite campus in Europe when there is such a necessity for improvement on the campus which has existed since 1962.

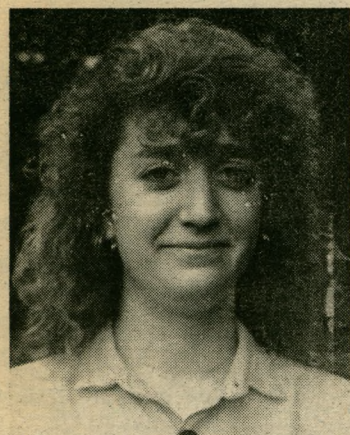
Yes, in light of the rapid changes sweeping through Europe, it would be nice to bring an international flavor to Sacred Heart, but right now it leaves a bad taste in my mouth.

Michael Champagne.....EDITOR-IN-CHIEF

Philip Trahan.....Associate EditorCopy Editor
Lori Bogue.....Sports EditorBusiness/Ad Manager
Dean Connors.....News Editor	Denise Kuhn.....Columnist
Chris Conway.....Arts Editor	J. Broad.....Columnist
Diantha Skeeter.....Photo EditorTypesetter
.....Features Editor	Dr. Ralph Corrigan.....Faculty Advisor

STAFF

Frank Mastroianni, Amy Madison, Brian Kerns, Paul Molnar, Kolleen Kaffan, Emily Mateka, Pegi Mueller, Nathalie Avridor, Charo Clark, Rory Gonsalves, Carleta Brown, Denise Matthews, Dawn Kentosh, Tamara Ospina, Phyllis Fontana, Jill Ruzbarsky, Michael Florio, Kellee Grucci, Shawn Keane, Keran Deterville, Jeff Fortin, Yvonne Klemets, Donna Robinson, Nicole Kittas, Katherine Bothos, Chuck Cullen, Megan Kelly



by Denise Kuhn
Columnist

The Winds of Change are blowing around the world. Germany, The Baltics, and the Soviet Union are changing every day. The same applies to our world here at Sacred Heart University.

In keeping with the master plan, offices are being renovated, people shuffled, and new things are being introduced to the university com-

munity.

One of the new changes in the spotlight is Seilers Food Service, which has replaced our friends Alex and Joseph in the cafeteria. Not only has the food service supplier been changed, the whole kitchen area is being remodeled.

Seilers Food Service, which has accounts with Fairfield University and many other universities around the nation, is managed by Maryanne Haller. Maryanne was known to be very sensitive to the students and their needs at Fairfield U. She hopes the same rapport will be present here at SHU. "I used to run across campus with a pad and pen because people used to stop me," said Haller.

The controversy surrounding this issue does not deal with Seilers

Food Service, but with the decision itself. The **BIG** question is: **Was there any student input in the decision making process?** In other words, were we the students represented or is this decision just one we have to live with.

In short, the answer is **NO**. The student's voice was not heard. Now the question is: **WHY NOT?**

For this answer I turned to Jim Barquinero, vice president of Enrollment Planning and Student Affairs. Barquinero stated it was a last minute decision, therefore, time was the reason there was no student input.

This is the story. In mid-august John Callahan, the #1 food consultant in the country, was called in to assess if our present food service would be able to accommodate 300 resident, 1100 com-

muter and 1300 part-time students. After a few days of observation he concluded it would not. At this point Sacred Heart started accepting bids for the job. Seilers won. End of story.

Because the decision was made during the last two weeks of August, it was impossible to have student input on this matter, stated Barquinero.

Dr. Cernera, president of SHU, regrets the lack of student input in this decision. "It was not a desirable way to do it," he said. "There were a number of extenuating circumstances which made it imperative for us to move faster than normal."

Well, that's the story folks. Now the final question is: **WILL WE CONTINUE TO ALLOW DECISIONS TO BE MADE**

AROUND US OR WILL WE TAKE STEPS TO ENSURE THE STUDENT'S VOICE IS HEARD?

Dr. Cernera feels that he and the administration listen when the students speak out. As an example, when Seilers was hired all resident students were informed the meal plan (which costs \$750 a semester) was mandatory. As of Wednesday evening, the 11th, resident students have a choice as to whether or not they wish to remain on the meal plan. Cernera stated the students were dissatisfied with the requirement, it was discussed and reversed. The system does work as long as we are a part of it.

It's up to us...either we sit back on our behinds and let the world go by or we make the difference.

Accommodating who?

To the Editor:

This letter is in response to the News Brief in the first issue of the Spectrum entitled "Accommodating Athletes." The article stated that the football and soccer teams field were renovated, but in doing so, the softball field was destroyed. How is that accommodating? Now the Women's softball team, which has comprised a record of 384-75 over the last ten years, participated in 8 NCAA Tournaments and has an overall winning percentage of .837, must travel more than 10 miles to Gould Manor Park in Fairfield to practice and play games for the Fall season, and come this Spring season will be moved to another off campus field. We feel the planning of the new sports additions was not properly thought about to accommodate all of the athletes. Isn't it sad there is a practice field for football and not even a playing field for softball?

Many questions have been left unanswered:

- 1) Is the school held responsible for any accidents that occur en route to and from Gould Manor Park?
- 2) How will the members of the softball team with no transportation get to the field if their class gets out late?
- 3) Due to the distance of the field from school, members of the team who once left a game or practice 10 minutes before their class began, must now leave approximately 25 minutes earlier due to a 15 minute travel time.
- 4) In return, members will now have to leave classes even earlier than before to get to our home (away from home) games.
- 5) When will our new home field be built? And will it be of the same quality as the old one?

We understand the need to expand the sports program and wish all the teams the best of luck, but why must other sports that we have made significant history in building the athletic program at SHU get shafted?

Signed,

Maria Cavaliere, Shari Wright, Heather Crilley, Keri O'Donnell, Amy Romanos, Jennifer Chabos, Alexandria Dohio, Michelle L. Palmer, Manilouy Prakusson, Panom Vilay, Lori Bogue, Becky Van Ort, Lisa DiGulio, Kerry F. Richardson.

Letters to the Editor

Compromising Positions

Dear Paul & Phil:

I would like to address the article "To Bear Arms vs. Two Bare Arms" concerning the conduct of Gamma Chi Zeta and the ROTC on Orientation Day.

I would first like to address Paul Perille, who seems to be very upset with the presence of the so-called "disarmed" M-16 assault rifles at the ROTC booth. Well, surprise guys, the Army has guns. Had you taken the time to notice, and gotten some or any facts before you wrote your article, you would have noticed these alleged dangerous weapons were rubber. If toy stores have the right to sell rubber guns to children I think the US Army has the right to let freshmen handle them.

As a member of Gamma Chi Zeta I would like to turn my attention to the author of the part of the article I found truly offensive, Mr. Phil Trahan. I think it is pitiful that an article that starts with "Although I wasn't present..." somehow finds its way into print. If you weren't present why the hell were you writing articles about it?

I also resent the comment about ostriches burying their heads in

the sand. However you stated that we "conspicuously caught the most attention."

Which is it Phil? Are we hiding or are we drawing attention? In conclusion Phil Trahan may find it tasteless that fraternities must stoop to sexual stimulation but I find it even more tasteless and offensive that someone can write an article passing judgment on an organization when he or she wasn't even present. Hey Phil, lose the Holier than thou chip on your shoulder and while you're at it get your head out of the sand.

Sincerely,

Tom Toner

Editor's Reply:

Tom, if you review the article, we never alleged these to be dangerous weapons. Rubber guns or not, most people would choose to not have it pointed at themselves. Secondly, it is perfectly acceptable for people to formulate opinions of events and circumstances which they did not personally experience. None of us was in Russia during the recent coup attempt, but I dare say, we all formulated an opinion on it.

As far as the ostriches comment is concerned: it was directed at Paul, Phil's adversary in print, so next time you load your M-16 warfare, don't go off half-cocked. MC

To the Editor:

For a long time, I have held that people were a group of deplorable, self-interested wretches who would stop at nothing to achieve whatever it is they want. When I came to SHU, I expected nothing different, higher than thou attitudes, cliques, the works.

Something happened over the weekend which changed all that. I was sharing company with a group of friends. We had an enjoyable day, watching TV, eating breakfast and lunch together, even going grocery shopping. The epitome of the day came that evening when, after Mass, one of the girls cooked the most magnificent meals I have had since I left home. It wasn't just the food that made the meal spectacular. It was the people I was with. They felt like a family to me, eight of us sitting around the kitchen table, eating pot roast, and generally having a good time.

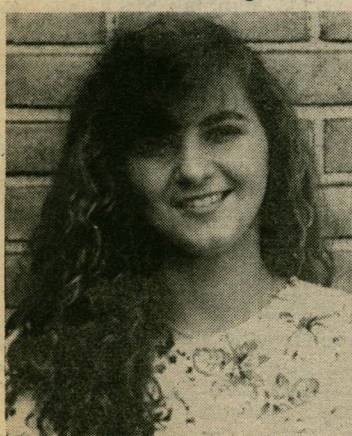
So for anyone who is a person-hater, or to anyone who judges people by how they look, what they wear, or what they have, STOP. You aren't giving the human race a fair chance. Learn to like people for who they are inside, not outside. And don't take them for granted. Our friends are the most important people we know.

Jason A. Dalrymple

The Student Voice

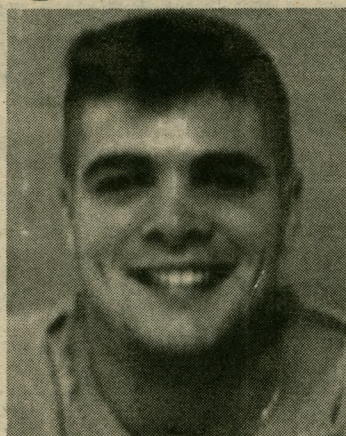
By Diantha Skeeter

What is your opinion of the curfew at Parkridge and Taft Commons?



Christine Servidio
Junior
Business Management

Being of college age, we are mature enough to make our own decisions. No other college has a curfew. I feel that we should not have a curfew as well.



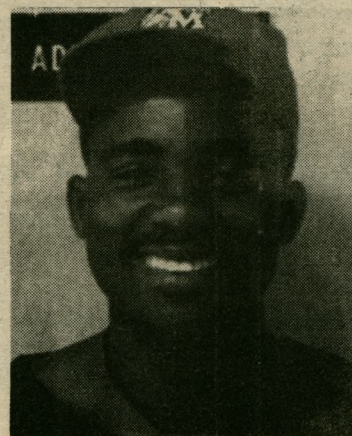
Kevin Bosworth
Freshman
Undecided

I think that the curfew is childish. I don't think that we need to be babysat when we're off at college.



Devele McCord
Sophomore
Criminal Justice

I've never had a curfew in my own home, so why should I have one at school? A change (of the curfew policy) would be better.



Sekore A. Davis III
Sophomore
Law

The curfew is not necessary. We're adults. If a curfew is to be implemented, it should be by the parents.



Russ Greenberg
Freshman
International Studies

The curfew isn't right because of the simple fact that college students are beyond the age of needing curfews. People's parents should set curfews, not schools.

Golden Eagles soar over Pioneers

By Rick Ferris
Sports Correspondent

SUNY Brockport welcomed Sacred Heart University into the world of NCAA Division III college football by beating the Pioneers, 41-0 last Saturday.

The Pioneers held the Golden Eagles scoreless mid-way through the second quarter when a botched snap over punter Rob Stopkoski led to Brockport's opening tally. Stopkoski recovered the ball at the Pioneer's own five yard line and sent off a desperation punt into the hands of Brockport All-America linebacker Steve Cook who ran it in for a touchdown.

The Golden Eagles second score came on one of their two sustained drives of the day. Quarterback Jim Higgins capped off an eight play, 70 yard drive on a one-yard dash making it 13-0. A 48 yard bomb from Higgins to Dan Fichter with :10 left in the first half gave the Golden Eagles a 20-0 half-time lead.

"The first half, we were in there and I left we could come back," SHU coach Gary Reho said. "But we came out on the same (lack of offense) note in the second half. We've got to correct the mental mistakes." The offense totalled a mere 69 yards of total offense on the afternoon.

While the offense struggled through the afternoon, the defense showed it could stand up against an established football program," Dave LeSage and Mike Matkovic stood out for us on defense," Reho stated. Of the six Brockport touchdowns, only two came as a result of a sustained Golden Eagle drive, an eight play, 70 yard drive in the second quarter, and an 11 play, 63 yard drive in the fourth quarter.

PIONEER TACKLES: Another historic day for Sacred Heart football will come on Saturday as the Iona Gaels come into town. Game time is 1 p.m. on top of the hill. Admission is free for full-time students and faculty, with a \$3 charge for SHU alumni, and visiting students, and \$5 general admission. Sacred Heart's game against Brooklyn College on October 12 has been cancelled as Brooklyn College disbanded their football program.



EVENT: Iona Gaels (1-1) vs. Sacred Heart Pioneers (0-1)

WHEN: Saturday, September 21, 1991

Time: 1PM

PIONEER NOTES: The Pioneers dropped their first NCAA Division III football game last Saturday 41-0. Early indications show the Pioneer defense headed by twins Ron and Rob Stopkoski, Joe Martin and Dave LeSage are the strong point of the 1991 Pioneers. Wide receiver John Wells showed some promise Saturday catching three passes for 22 yards.

GAEL NOTES: The Gael finished their 1990 season with a 5-5 record. The '91 Gaels are highlighted by quarterback Bill Hyland. A junior, Hyland captured the ECAC and Liberty Conference Rookie-of-the-Year award in 1989. Runningback Byron Womack is now tied with Toronto Argonaut Raghil Ismail for the All-Divisions career record of six kickoff touchdown returns. Iona dropped a heartbreaker Friday night 30-27 to St. John 42 yard field goal with no time remaining.



Improvement showing for SHU women's soccer

By Denise Mathews
Sports Writer

Along with the many improvements and additions at Sacred Heart University this year comes a new women's soccer coach, Joe McGuigan, the men's coach of nine years, has also taken the responsibility of the women's team. Because it is a new team, Joe has a lot more to deal with than it may seem.

"Because I took this position so late, I wasn't and haven't been able to improve on the number of girls coming out for the team. Being a new team, I'm not sure about what we'll achieve, but I do have some goals in mind," said Coach McGuigan. He wants to develop the younger girls in order to form a foundation for the team. He also plans to recruit serious players for the years to come. By getting help from team members, he plans to make calls and send letters hoping to interest high school juniors and seniors. So far this season, he has been relying on a line-up mainly made up of girls whose main sport is not soccer. Although Joe finds no problem with this for a beginning team, it could pose problems as

the season advances.

Coach McGuigan wants to enjoy the season as a coach and wants the girls to enjoy playing for him. "I know it is very difficult for players to go out and lose the majority of their games. I want the girls to understand that this may happen at the start, but we will progress," comments McGuigan. He feels that if the girls realize this it will relieve pressure and turn it into a learning experience.

Besides experience, another problem might deal with the fact that Joe McGuigan coaches both soccer teams. McGuigan says he will be at every practice except when there is a men's game scheduled. There are only four conflicting games, of which he will try to appear evenly for both teams. But to take his place in absence will be Joe Barroso, a graduated member of Southern Connecticut University's National Champion Soccer team. "I don't want the girls to think they are less important to me. I am planning to have a say in the 1992 scheduling so there will be no further conflicts," states McGuigan.

McGuigan has the same philosophy for both teams. "I will

educate my players while letting my players educate me," philosophizes McGuigan. He doesn't feel that he will have any problems with the girls. "They are all so eager and determined to prove themselves in a sport that has been considered to involve manly skills," comments McGuigan.

Last Thursday, the women took on Quinnipiac College. The loss which ended in a score of 6-0 was a huge improvement over last season's outcome of 11-0.

Considering the team is dependent on other sport's athletes, the team did fairly well. Recruits were made from the volleyball, cross country and softball teams to field just enough for a full squad. A stronger outcome was expected, but a few players were ineligible for various reasons.

On Saturday SHU took on Dominican College at home. Although there were SHU fans there the team couldn't pull through with a victory, ending the game at 6-2. Michelle Palmer scored her and the team's first goal of the season in the second half, with a shot from the outside. Following a rebound, Alexandria Dohme took a shot that was out of the goalie's reach to score the second goal.

HELP WANTED

ADDRESSERS WANTED immediately! No experience necessary. Process FHA mortgage re-funds. Work at home. Call 1-405-321-3064

Earn Fabulous FREE Spring Break Vacation while meeting new people and earning cash. Work at your own pace. Energetic, highly motivated outgoing individuals needed. Call Bob at Campus Holidays, 1-800-627-4791 between 5pm - 10pm CST.

TRAVEL FREE!! SELL SPRING BREAK TRIPS TO JAMAICA, CANCUN, BAHAMAS, MARGARITA ISLAND, PLUS!! EARN YOUR FREE TRIP WITH FEWEST SALES. SUN SPLASH TOURS 1-800-426-7710

WANTED: "Coppertone Spring Break Trip" student representative to promote trips to Cancun, Nassau, Barbados, Jamaica, Daytona, and Orlando. Best programs available ANYWHERE...earn cash, free trips plus more. Call for more information 1-800-222-4432 (9:00am-5:00pm)

TRAVEL OPPORTUNITIES

IT'S BACK TO SCHOOL!
AND ALL ART STUDENTS SHOULD
KNOW WHERE TO GO FOR ALL
THEIR SCHOOL NEEDS.



68 Post Road East • Westport, CT 06880 226 • 0716

CLASSIFIED ADS

RAISE \$500...\$1000...\$1500

**FOOL
PROOF
FUND
RAISING**

For your fraternity,
sorority, team or other
campus organization.
**ABSOLUTELY NO
INVESTMENT REQUIRED!**

CALL 1-800-950-8472, ext. 50

Sports Shorts

NCAA has a ball

According to the "NCAA News" July issue the NCAA Executive Committee has recommended that beginning in the 1993 softball championships the official ball may be a highly visible yellow ball with red stitching.

"The committee's intention is to give batters a ball that is easier to see and, therefore, easier to hit. The committee believes increasing offense will add excitement to the game for players and spectators," "NCAA NEWS" stated (15).

This decision came about in Oregon June 24-27 in the Committee's annual meeting.

Seeking Intramural Spikers

Intramural co-rec volleyball registration will be Sept. 16-20. The season runs from Sept. 25- Oct. 30. Game play is on Wed. nights starting at 7 PM. There will be a mandatory captain's meeting, Sept. 23 at 4:00 PM in office G-100.

Intramural Touch Football for Men

Are you tired of sitting on the couch, drinking soda, beer or eating pretzels watching Sunday football wishing you could play? Then register Sept. 18-25 for some football action. The season runs from Sept. 29- Nov. 3 on Sunday afternoons. There is a mandatory captain's meeting Sept. 26 at 4:00PM.

This Contest is Really Foul

Registration will be held from Sept. 26-30 for a one day foul shooting contest. The event will be separated into men and women divisions and will take place from 11-12:30 Tuesday in the gym. See Nick Giaquinto in the athletic department for information.

Lady Pioneer Spikers win opener

By: Lori Bogue
Sports Editor

The lady Pioneer spikers recently opened volleyball action last Wednesday by shutting down Western in three straight sets: 15-7, 15-9, and 15-11. Heather Crilly and Lisa Difulvio each smashed nine kills apiece and had strong defensive plays. Maria Cavaliere led the Pioneers with 44 digs and six kills, while Jennifer Dankulich lined five kills. Kim Filia had an outstanding night as the Pioneer setter. Dankulich emphasized, "work hard, play

harder," as a possible new Pioneer motto.

As an assistant to the coach, Diane Nichols is extremely involved with the team. Nichols was a three sport standout in volleyball, softball and basketball. "We're working really hard in practice and I think we'll do well this season if we remember the things that we've learned. I'm really excited about this year," said Nichols.

Monday the Pioneers traveled to Quinnipiac College only to drop their record to 1-1, bowing to the Braves 15-7, 15-9, and 15-7.

Standout, Maria Cavaliere

did not participate in the match due to an unrelated sports injury. The spikers spirits we're dampened and they struggled defensively and offensively. Despite trying to hold on, the Pioneer's problems only increased when they made several service errors.

Jennifer Signano stated, "If we keep working hard in practice we will go far." Look for the Pioneers in action tonight in the gym against Bryant at 7:00. The ladies travel to The University of New Haven, Friday and Saturday for their first tournament play of the season.

Women's Cross Country Off and Running

By Amy Madison
Sports Writer

On your mark...get set...go! The Women's Cross Country team is off and running on another season. This is the second year for Head Coach Ed Swanson, who is optimistic about the remainder of the meets.

This year's team sports many new faces. Only Elaine Agosti and Karen Bell are returning from last year. The new members of the team are Sherri Wright, Filomena Fontana,

Diana Cutia, Patty Dillon, and Gina Curtin. Although all of the women are runners, most of the team consists of athletes who are primarily basketball players, as in previous years.

The Lady Pioneers opened the 1991 season at the Fairfield Invitational Meet on Saturday, Sept. 7th. Despite finishing eighth out of nine teams, Swanson felt that his runners performed well. "It was a tough course, and we ran against many Division I schools," he admitted, "but we did well against the Division II schools." Agosti led Sacred Heart, finishing 57th,

with a time of 28 min. 16 sec., followed by Cutia in 62nd place, with a 29 min. 13 sec. time.

Swanson feels that team improvement is important. "Our individual runners are moving up, but our team scores are still behind," he pointed out. That fact was evident last Saturday at the Central Connecticut Invitational Meet. Each SHU runner improved her time by about five minutes, but the team as a whole did not fare well. Cutia led the Lady Pioneers, followed by Agosti and Wright.

The team travels to King's College on Saturday for the next meet.

Missives:

Well, I'm back and madder than ever. For the new readers out there I write a weekly column making absolutely ridiculous prognostications and a review of the weeks sports events on both the collegiate and national level. Fasten your seat belts, destination: football.

After three weeks of the NFL season you have your usual in excellence; the 3-0 Bears, Bills, and Redskins and your usual flops; the 0-3 Bucs, Colts, and Chargers. Then you have the unusual and quite honestly shocking; the 3-0 Saints, the 2-1 Browns, Cards and Lions, and in the negative, the 1-2 Dolphins, Giants and 49ers and the staggering 0-3 Bengals. Numerous injuries have appeared devastating to the Eagles and Cards by losing QB's **Randall Cunningham** and **Timm Rosenbaugh** for the season, the Patriots lost **Hart Lee Dykes**, their top receiver, and Seattle recently lost their QB **Dave Krieg** for two months.

The locals stand at 1-2, but the Giants, Jets and Patriots have all arrived at this record in their own way. New Giant coach **Ray Handley's** troops won a huge contest on their season opener vs. the 49ers but have had two let-downs since then. Has the **Hoss** lost the magic touch which guided the Giants to their second Super Bowl title in the last 5 years? Stay tuned. As for the Jets, believe it or not they could have stood 3-0 instead of the 1-2 mark they currently own. Gang Green blew a lead in Seattle and lost and this past week, they completely outplayed the Bills, but a couple of costly mistakes plagued them and the end

From The Madman

result was another loss. Hey **Bruce Coslett**, you don't run on 3rd and 10 with under one minute left in the game down three and staring at a 50+ yard attempt staring you in the face. The run failed and so did the field goal attempt. The Pats, winners in week one vs. the Colts should play with just half the spirit that coach **Dick McPhearson** exudes from the sidelines. Offense has been a large problem and after punter **Bryan Wagner** booted blocker **Eugene Lockhart** in the posterior with the football in the endzone, recovered by the Steelers for a touchdown, special teams apparently needs work too.

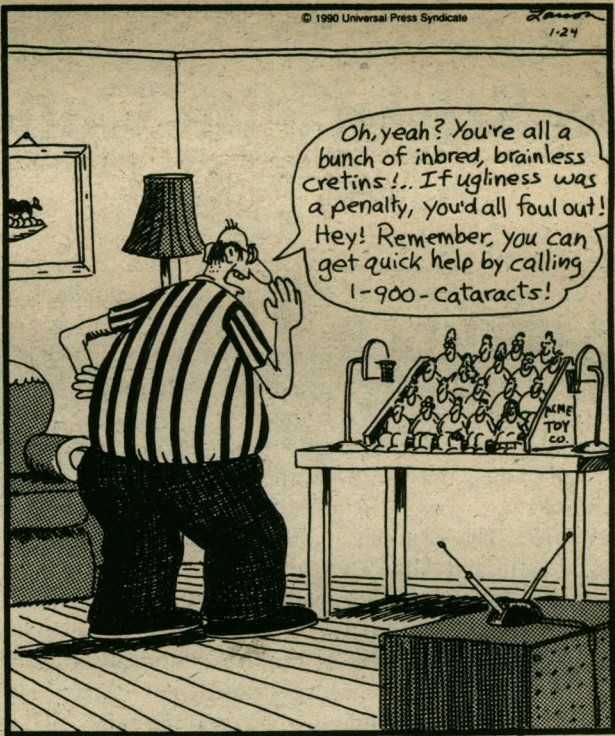
With one game in the books, the Sacred Heart Pioneer football team looks to rebound against Iona this Saturday in their home opener. A large crowd is expected even in the wake of a 41-0 loss to

Stonybrook in the season opener. The defense didn't play as poorly as the score would indicate. Special teams made a couple of mistakes, which should be expected for a team starting 20 freshmen. **Joe Verderame** started at QB and was followed by two others. Will this trend of multi QB's continue? Stay tuned.

SHU soccer stands at 3-0-1 after a 1-0 blanking of St. Anselm's College on Sunday. The Pioneers have been led by the stingy defense and tough goaltending of **Jay McDougall** and the offense of **Mike Ferreira**.

Oh, as for the pennant chases in MLB I like Pittsburgh and the Tommy hawking Atlanta Braves to meet in the NLCS and Minnesota (tough one) and the Toronto Blue Jays to vie for supremacy in the AL. Sorry Red Sox fans, 1918!!! HAHHA....

THE FAR SIDE By GARY LARSON



When referees go home at night.

Running Calorie Burn-Off

Courtesy of SHAPE, 87

For every mile you run, you'll burn 1.43 calories for each kilogram of your body weight regardless of speed. To determine your weight in kilograms, divide your weight in pounds by 2.2 (2.2lb=1kg). In our chart, calories burned have been rounded to the nearest whole number.

Body weight in lbs.	Calories Burned (Based on total miles run)						
	1	3	5	7	10	13	16
115	75	224	374	524	748	972	1197
125	81	244	406	568	812	1056	1299
135	88	263	439	615	878	1141	1405
145	94	283	471	659	942	1225	1507
155	100	302	504	706	1008	1310	1613
165	107	322	537	751	1073	1395	1717

Beginners Four-Week Training Program

Days of Training

	Day 1	Day 2	Day 3	Day 4	Day 5	Day 6	Day 7
Week 1	1m*	1m*	Rest	1.5m*	1.5m*	Rest	Rest
Week 2	1.5m*	1m	Rest	1.5m	1.5m	Rest	Rest
Week 3	2m	1.5m	Rest	2m	1.5m	Rest	2m
Week 4	2m	Rest	2.5m	2m	Rest	2.5m	2m

This is a 4-week training plan for the beginning runner, after a long period of inactivity. An m denotes miles covered in each training session, and an * indicates that it may be performed as intermittent running and walking.



Women's soccer wins their first for



By: Lori Bogue
Sports Editor

Tuesday afternoon the women's soccer team traveled to Seaside Park to take on the Purple Knights of the University of Bridgeport. Both teams struggled to catch their breath in the sweltering humidity but SHU managed to hold "The Knights" scoreless in both halves, 3-0.

Michelle Palmer smashed a goal with an assist from Becky McGuigan in the first half. Half-back Amy Romanas said, "The heat dampened our spirits at first but after the first goal, Palmer brought the team alive."

Coach McGuigan said, "I think it is very exciting to have the first win in history." Although the team is patched together McGuigan believes that the team fought hard and worked well. "The team was well conditioned and it was no problem despite the heat, and the little bit of experience from soccer play last year showed," said McGuigan.

Becky VanOrt scored the second goal with an assist by Palmer. In the closing moments of soccer play, Palmer scored again with an assist from forward- Denise Mathews. "It's tough to compete against top ranked teams because a majority of us have never played soccer before, but we're athletes whom go out and give 110% every game," said Palmer.

Coach McGuigan was pleased with the efforts of the Pioneer kickers. He stated that Keri O'Donnell did a great job at goalie despite her limited experience. Patricia Dillon, a mid-fielder, did an outstanding all around job. The front line of Nicole Duback, Mathews, and Palmer did a superb effort of moving the ball. VanOrt had some great defensive and offensive moves. Becky McGuigan and Gail Mazzucco kept the Pioneer squad strong as mid-fielders. The backfield was protected by left full-back Jennifer Chabus, sweeper Romanas, and right full-back Lori Bogue.

"We have great potential, and serious competition for next year with a strong nucleus to build on in the future," said McGuigan.

The Pioneer kickers will travel to Smithfield, RI to compete against Byrant today and Saturday, Rindge, NH will find SHU competing against Franklin Pierce College.

Men's soccer rolls in SHU wins vs Assumption and St. Anselm Colleges

By: Carleta Brown Sports Writer

In the second game of the season the SHU kickers encountered the North Eastern Champions Stonehill College in a highly competitive game which ended in a scoreless draw.

Though SHU's soccer team was somewhat dubious about it's ability to go up against Stonehill successfully, SHU's defense proved it's worth by applying constant pressure to it's opponent.

According to Freshman Fernando Fernandes, a forward for the Pioneers, the first half of the game was not well played because "we didn't expect the other team to start so fast." However, SHU counteracted with strong defense especially from Theo Burnett and Sekou Davis. Theo now plays defense because of the loss of Allan Zuniga who is not eligible to play this season.

SHU kickers dominated the second half with the play of midfielder, Liam McKeown who kept Stonehill's offense unable to penetrate. Goal keeper, Jay McDougall also did his share of hindering Stonehill's goals. Fernandes stated, "that defense and offense were excellent, we just weren't lucky."

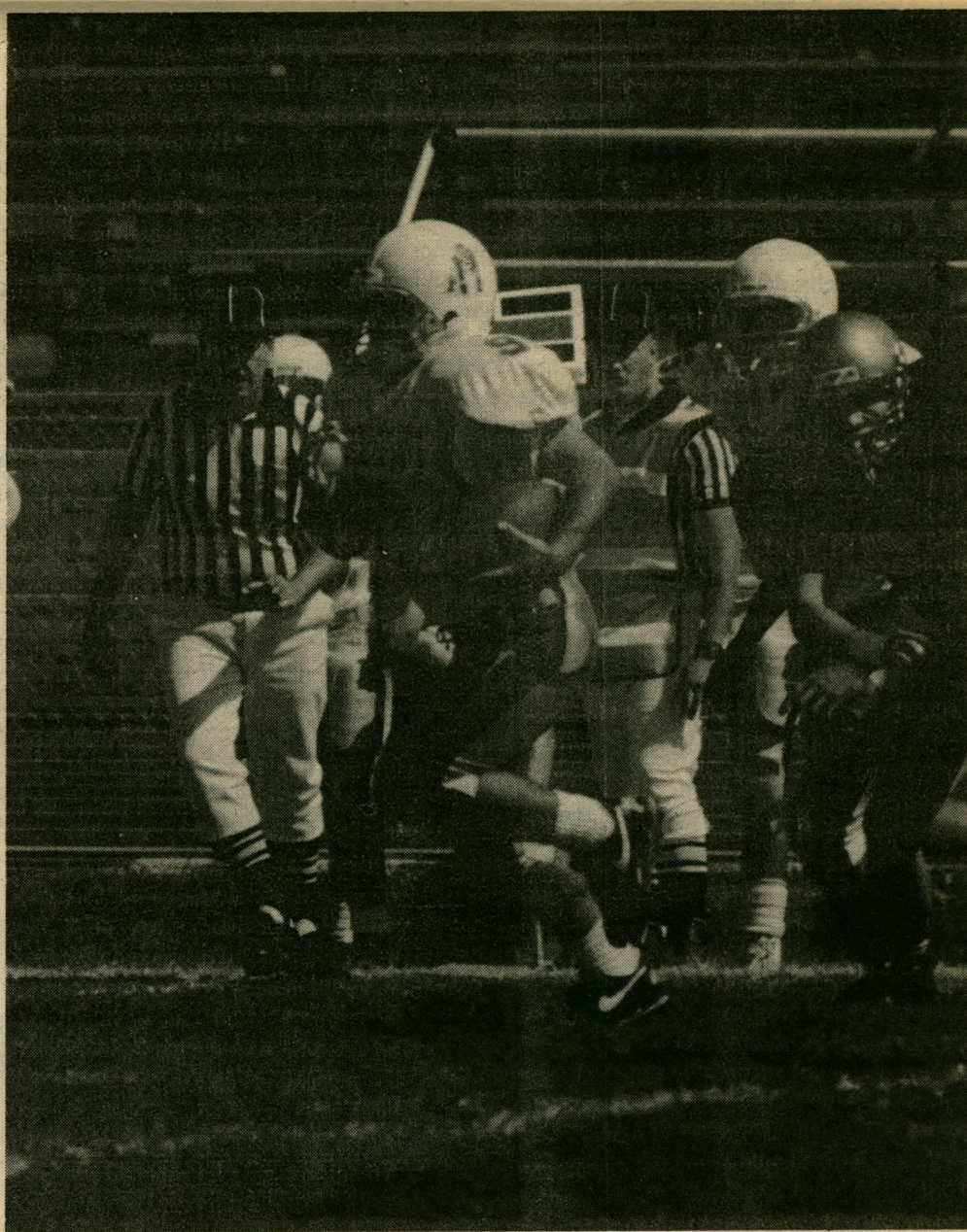
Even with double overtime the play was the same; SHU continued to mount pressure, scoring opportunities were numerous but still neither side yielded a goal. "Overall it was a good game even though we didn't score," said Fernandes. However, he added that he was pleased with the team's performance since it shows that the SHU players are formidable rivals.

Thursday, Sept. 12 was another successful game with a 4-1 victory for the Pioneer kickers. The game began with a 1-0 score with Assumption College scoring five minutes into the game. Five minutes later, forward Pedro Mayuri neutralized the game with an upsetting shot. After this SHU had total control of the game, preventing it's opponent from having even an opportunity to score again.

Manuel Olivares broke the tie with an outstanding shot which placed SHU in the lead. A penalty against Chris Earle gave Mayuri his second goal and Davis rounded off the game with SHU's final goal.

Theo Burnett, who was a total upset for Assumption College's offense claims that the Pioneers are, "playing well but not finishing strongly."

On Sunday, Sept. 15, the SHU kickers had another game against St. Anselm College in Manchester. The game was a 1-0 victory for SHU, scored by Mike Ferreira. According to coach McGuigan, "it wasn't a difficult game, but that final touch to transpose all the hard work generated in the midfield, is not there". However, the coach is pleased with the team's performance, but he believes that more concentration will yield more goals.



Quarterback Joe Verderame scrambles for some yardage against SUNY Brockport last Saturday in Sacred Heart University's first-ever football game, played at Brockport, N.Y. The Pioneers kept the score close for three quarters before succumbing, 41-0. For more information see story page six.

Dusen Photo